

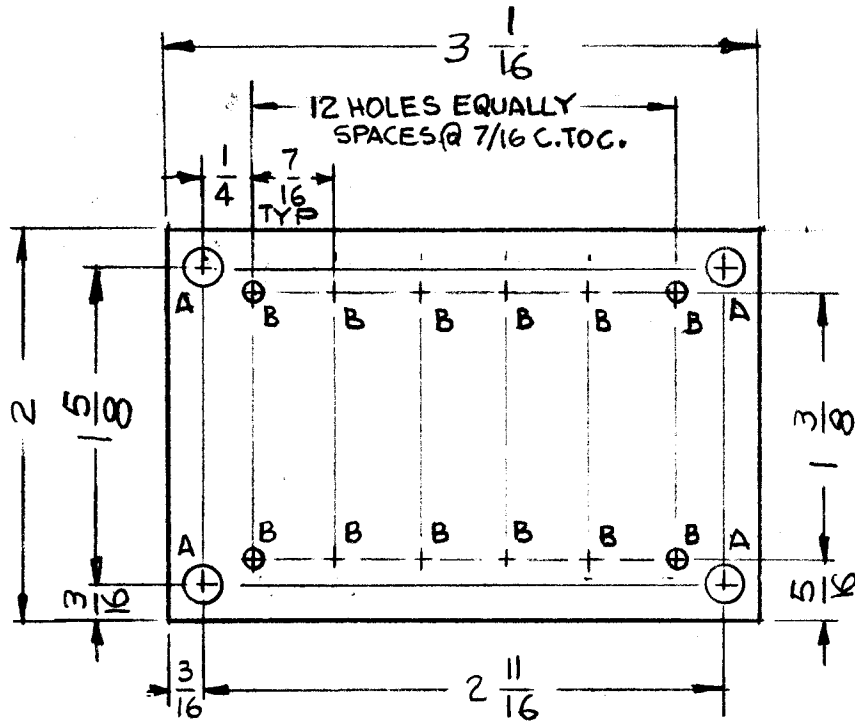
MATERIAL:
G-10 EPOXY GLASS LAMINATE 3/32 THK

HOLE	DESCRIPTION	REQ
A	.189 DIA	4
B	3/32 DIA.	12

A3864 B

REVISIONS

SYM	DESCRIPTION	DATE	E.M.N. NO.	DRAFT	CHKD	APPD
X	EXP. RELEASE	10-1-64		G.D.L.		
X1	R5003 & R5002 RELOCATED	10-6-64		G.D.L.		
X2	ALL SYM. REF. DESIG. CHG.	10-8-64		G.D.L.	JM 10/8	
Ø	ORIGINAL RELEASE FOR PRODUCTION	10-9-64		@	JM	
A	SYM. COL. ON B/M CLARIFIED.	5-7-65	14057	JT	JB	JCE
B	IT. 5 WAS RC426F 561K	3-28-66	16032	HUA	JB	JCE



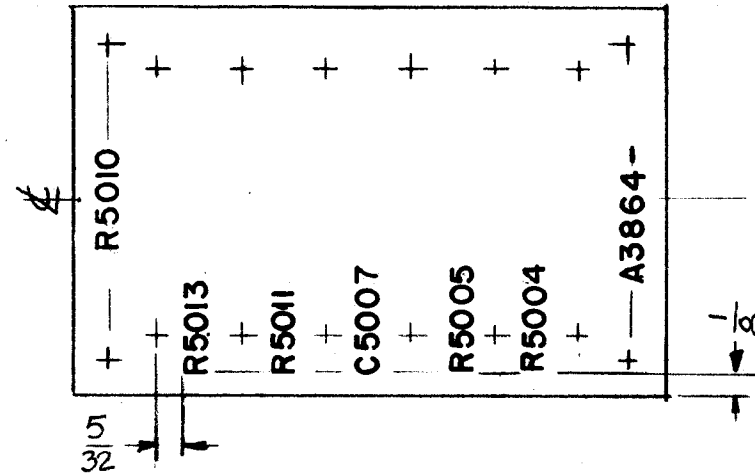
MACHINING (A3864-1)

MARKING PROCESS: AS PER TMC SPEC. S-727

LETTERING: 1/8 HIGH BLACK GOTHIC LOCATED AS SHOWN

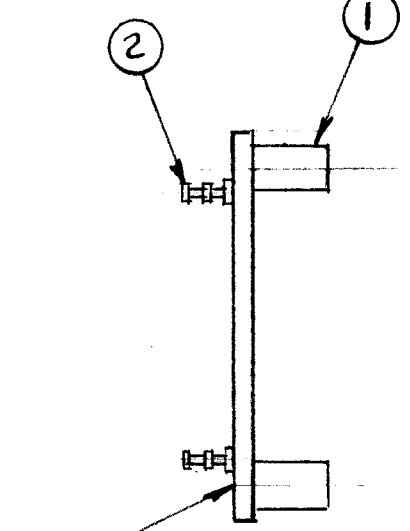
MARK TMC P/NO W/LATEST REVISION LETTER

FUNGUS PROOFING PER TMC SPECIFICATION S-113



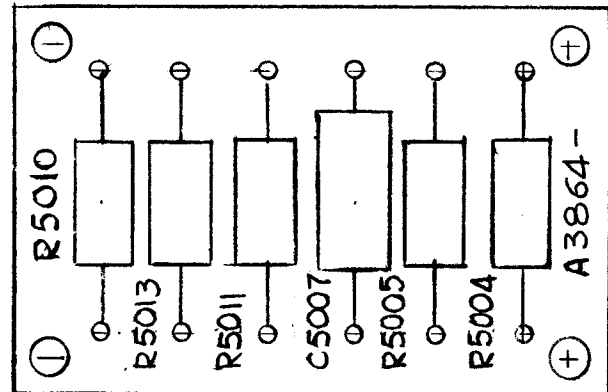
LETTERING (A3864-2)

MOUNT IN ALL "B" HOLES



LETTERING ON THIS SIDE

SUB-ASSY (A3863-1)



ELECTRICAL ASS'Y (A3864-4)

REQ'D.	ITEM	PART NUMBER	DESCRIPTION	SYMBOL
X	8	BS100	SOLDER, TIN ALLOY	
1	7	RC 42 GF 102K	RESISTOR, FIXED, COMPOSITION	R5004
1	6	RC 42 GF 221K	RESISTOR, FIXED, COMPOSITION	R5005
2	5	RR114-500W	RESISTOR, FIXED, COMPOSITION	R5013
1	4	RC 426F 332K	RESISTOR, FIXED, COMPOSITION	R5011
1	3	CN112-A-474-K-1	CAPACITOR, FIXED METAL	C5007
12	2	TE 127-5	TERMINAL, STUD	B
4	1	TE 108-12	NUT, PLN, CLINCH	A

EATON

LIST OF MATERIAL

MATERIAL	THE TECHNICAL MATERIEL CORP. MAMARONECK, NEW YORK			
FINISH	TITLE TERMINAL BOARD ASS'Y			
UNLESS OTHERWISE SPECIFIED DIMENSIONS ARE IN INCHES AND INCLUDE CHEMICALLY APPLIED OR PLATED FINISHES	DRAWN	DATE	FINAL APPROVAL	
	G.D.L.	10-1-64	RJC	
DECIMALS .X ± .05 .XX ± .01 .XXX ± .005	CHECKED	DATE	DATE	
	@	10-9-64	DATE	
FRACTIONS ± 1/64 ANGLES ± 0° 30'	ELECT. DES.	DATE	SHEET	
	W. JORDAN	10/9/64	A3864	
TOLERANCES			DATE	REV. LTR.
			7/18/65	B

NOTES

THE CONTENTS OF THIS DRAWING ARE THE EXCLUSIVE PROPERTY OF THE TECHNICAL MATERIEL CORP. ITS UNAUTHORIZED USE OR REPRODUCTION IN WHOLE OR IN PART IS STRICTLY FORBIDDEN.