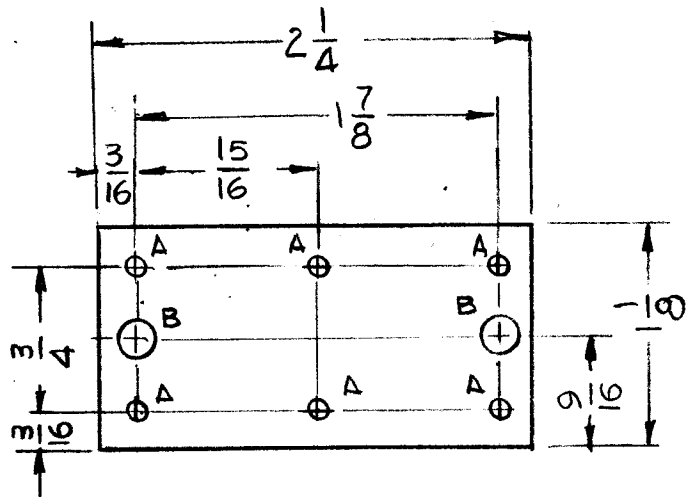


MATERIAL:
G-10 EPOXY GLASS LAMINATE 3/32 THK

HOLE	DESCRIPTION	REQ
A	3/32 DIA	6
B	3/16 DIA	2

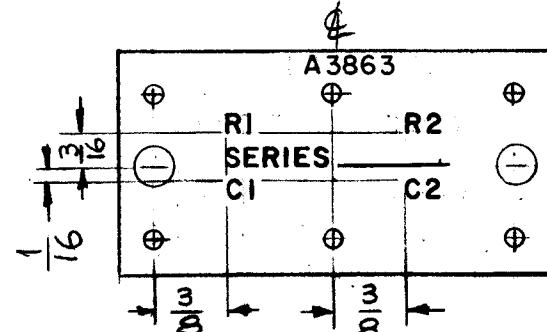
A3863

REVISIONS					
SYM	DESCRIPTION	DATE	E.M.N. NO.	DRAFT	CHKD APPD
X	EXP. RELEASE	10-1-64		G.D.L.	
X1	R1 & R2 WERE R5013 & R5014 - C1 & C2 WERE C5011 & C5012	10-6-64		G.D.L.	
X2	SYMBOL SERIES CHART ADDED	10-8-64		G.D.L.	J.M.
Ø	ORIGINAL RELEASE FOR PRODUCTION	10-9-64		@	
A	ON B/M: IT. 3 WAS CE 105-50-20	2-18-65	13515		
B	(TMC TO HAND STAMP) NOTE ADDED TO -4	9/20/65	14854		

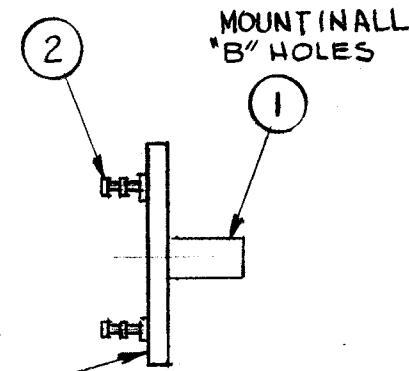


MACHINING (A 3863-1)

MARKING PROCESS: AS PER TMC SPEC. S-727
LETTERING : 3/32 HIGH BLACK GOTHIC, LOCATED AS SHOWN
MARK TMC P/NO W/LATEST REV. LETTER

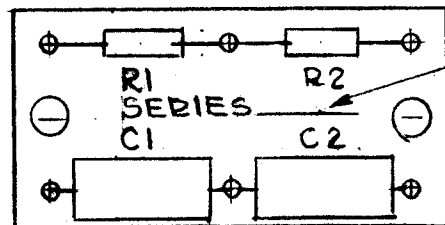


LETTERING (A 3863-2)



LETTERING ON THIS SIDE
SUB-ASSY (A 3863-3)

MODEL	SYMBOL SERIES MARKING #
RTMU-1	5000
RTPA-1	1000 A4050
RTIA-1	2000



(SEE CHART)
TMC TO HAND STAMP
APPROPRIATE SERIES
ON ASSY.

ELECTRICAL ASS'Y (A 3863-4)

REQ'D.	ITEM	PART NUMBER	DESCRIPTION	SYMBOL
2	4	RC 20GF 102K	RESISTOR, FIXED, COMPOSITION	R1, R2
2	3	CE 105-20-50	CAPACITOR, FIXED ELECT.	C1, C2
6	2	TE 127-5	TERMINAL, STUD	A
2	1	TE 108-12	NUT, PLN, CLINCH	B

EATON

LIST OF MATERIAL

MATERIAL	THE TECHNICAL MATERIEL CORP. MAMARONECK, NEW YORK			
FINISH	TITLE TERMINAL BOARD ASSY			
UNLESS OTHERWISE SPECIFIED DIMENSIONS ARE IN INCHES AND INCLUDE CHEMICALLY APPLIED OR PLATED FINISHES		DRAWN G.D.L.	DATE 10-9-64	FINAL APPROVAL [Signature]
DECIMALS .X ± .05 .XX ± .01 .XXX ± .005		CHECKED @	DATE 10-9-64	DATE
FRACTIONS ± 1/64 ANGLES ± 0° 30'		ELECT. DES. [Signature]	DATE 10/1/64	DATE
TOLERANCES		MECH. DES. W. JORDAN	DATE 2/18/65	DATE
SHEET			A 3863	
REV. LTR.			B	

NOTES

1	SEE CHART	
Q'TY./UNIT	MODEL USED ON	ASS'Y. NO.
SCALE 1:1	CODE A	
THE CONTENTS OF THIS DRAWING ARE THE EXCLUSIVE PROPERTY OF THE TECHNICAL MATERIEL CORP. ITS UNAUTHORIZED USE OR REPRODUCTION IN WHOLE OR IN PART IS STRICTLY FORBIDDEN.		