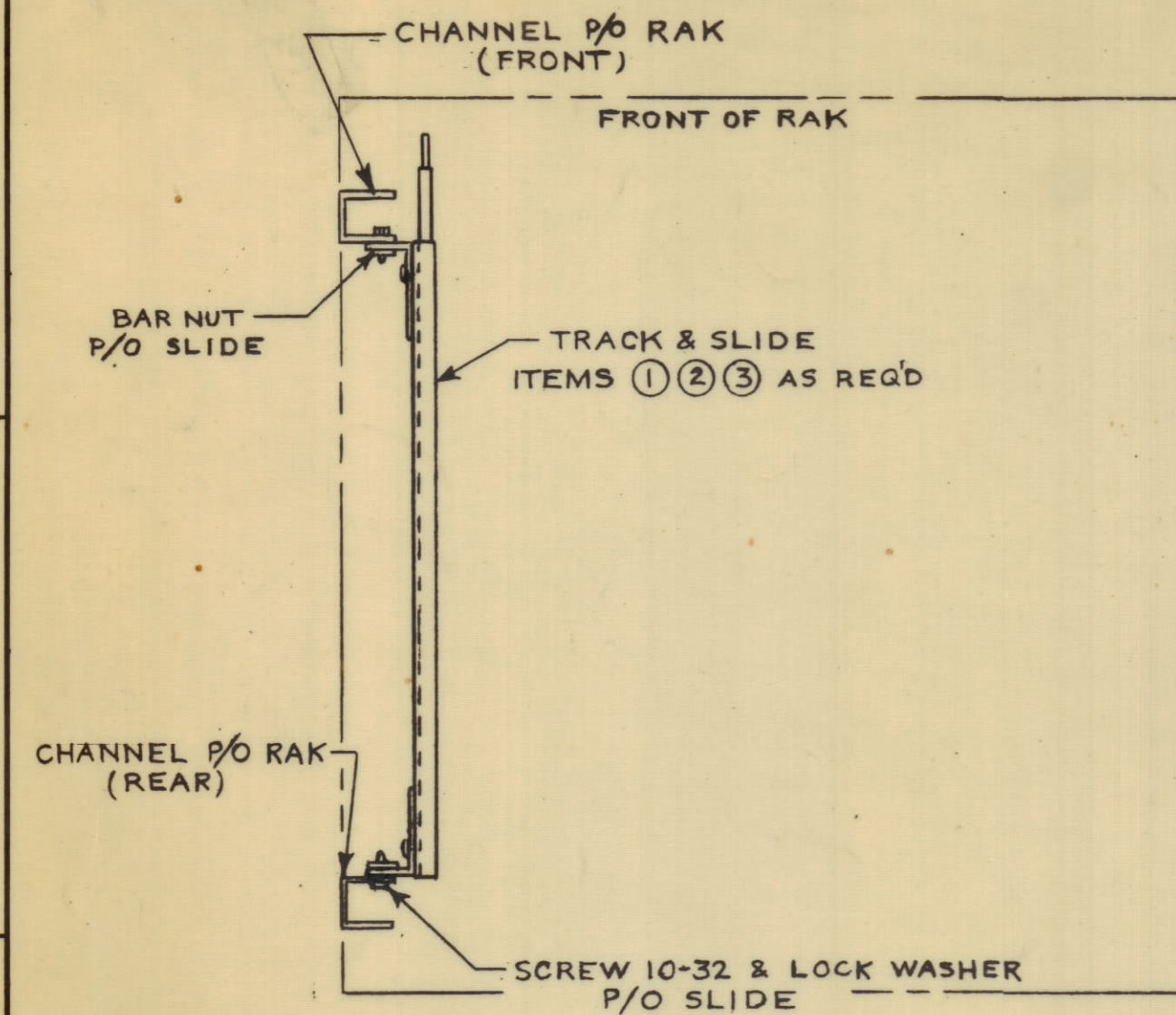
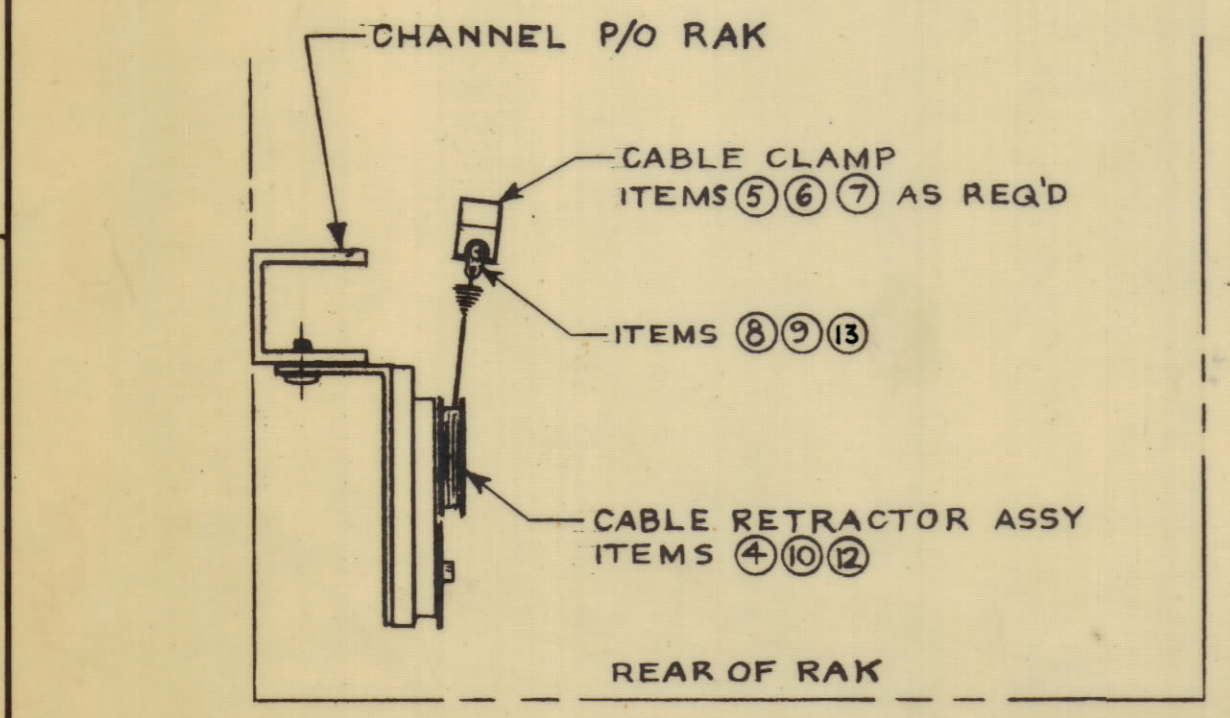


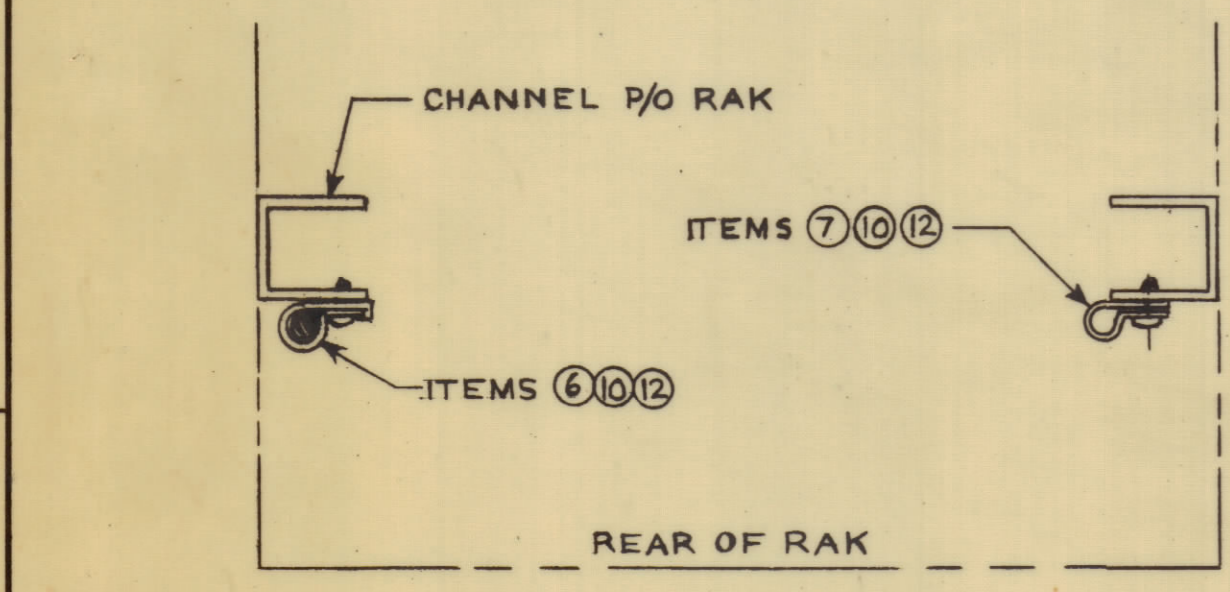
REVISIONS						
ZONE	SYM	DESCRIPTION	DATE	E.M.N. NO.	DRAFT	CHKD
Ø		ORIGINAL RELEASE FOR PRODUCTION	2-11-65	HLA		APPD



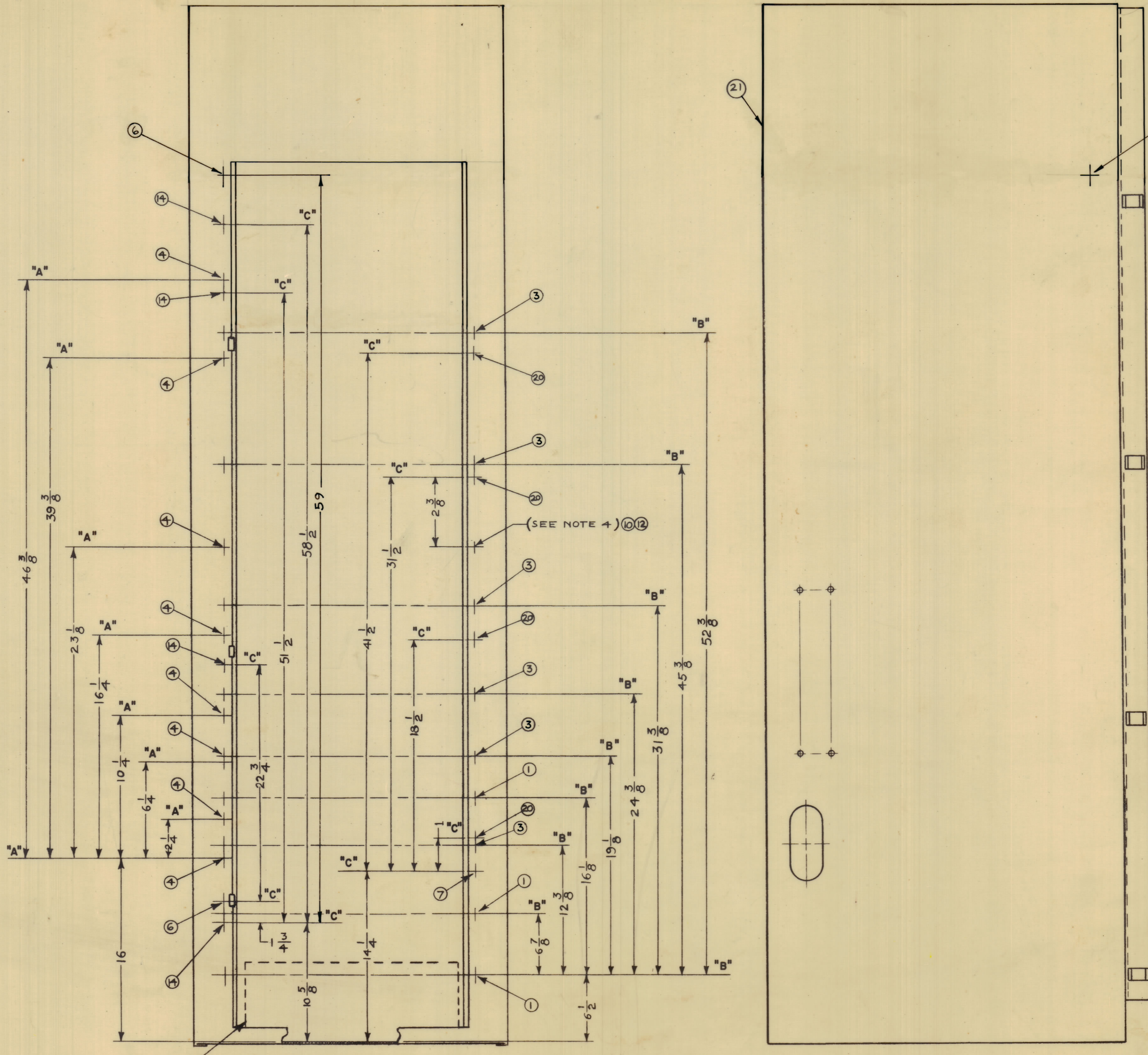
DETAIL OF SLIDE MTG  
(R.H. SIDE SHOWN)



DETAIL OF CABLE RETRACTOR MTG

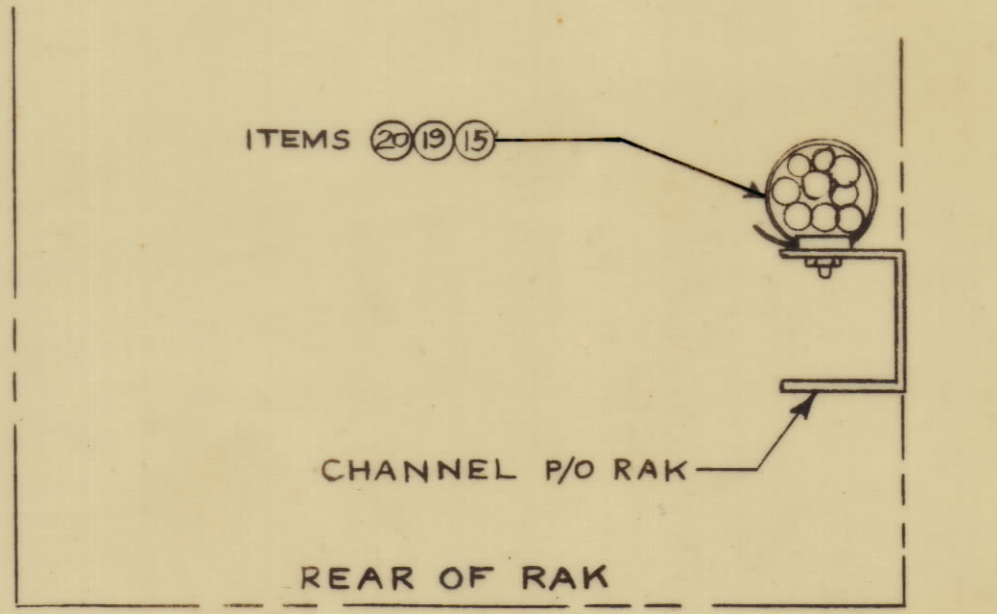


DETAIL OF CABLE CLAMP MTGS



REAR VIEW

- NOTES:
- "A" INDICATES MOUNTING CENTER LINE OF RETRACTING ASSY'S.
  - "B" INDICATES MOUNTING CENTER LINE OF TRACK & SLIDE SETS.
  - "C" INDICATES MOUNTING CENTER LINE OF CABLE CLAMPS & STRAPS.
  - AT POINT INDICATED, SAND DOWN FINISH TO BARE METAL & FASTEN GROUND LUG TE106 P/O CA870 WIRING HARNESS, CA870 P/O A4031



DETAIL OF CABLE STRAP MTG

ITEM NO.	USED TO MOUNT	QTY
19&20	27	4
15	19	4
	28	
	27	

REQ'D.	ITEM	PART NUMBER	DESCRIPTION	SYMBOL
	29	GL133	ADHESIVE	
	28	AF103	FILTER, RADIO INTERFERENCE	
	27	A3885	WIRING HARNESS/FILTER ASSEMBLY	
	26	AD103-5	FILTER, AIR CONDITIONING	
	25	CA884-2	CABLE, ASSEMBLY, POWER, AC-2C	
	24	CA884-1	CABLE ASSEMBLY, POWER, AC, 9C	
	23	SFB0256SN3	SCREW, TAPPING, THREAD, CUTTING	
	22	NP103-42	PLATE, IDENTIFICATION-COMMERCIAL	
	21	A4090	CABINET, ELECTRICAL EQUIPMENT	
4	20	CU-142-1-0	STRAP, CABLE, ADJUST, PLASTIC	
4	19	CU160	RETAINER, CABLE STRAP	
1	18	AX-380	FAN ASSEMBLY	
M	17	DELETED		M
M	16	DELETED		M
4	15	NT137-0832		
4	14	CU-131-4	CLAMP, CABLE	
8	13	NTH0632BN8	NUT, HEXAGON	
24	12	LWE10MRN	WASHER, LOCK, EXTERNAL, TOOTH	
M	11	DELETED		M
24	10	SCBP1032BN8	SCREW, MACHINE	
8	9	SCBP0632BN4	SCREW, MACHINE	
8	8	TE-104-2	TERMINAL, LOCKING	
3	7	CU-131-5	CLAMP, CABLE	
4	6	CU-131-6	CLAMP, CABLE	
3	5	CU-131-8	CLAMP, CABLE	
8	4	A-3517	SPRING, RETRACTING, ASSEMBLY	
8	3	TX-115-18	TRACK & SLIDE SET	
1	2	CA696-1	CABLE ASSEMBLY, POWER, AC-3C	
3	1	TK-114-18	TRACKS & SLIDE SET	

LIST OF MATERIAL  
THE TECHNICAL MATERIEL CORP.  
MAMARONECK, NEW YORK  
RAK-102-3 FINAL ASSEMBLY

QTY/UNIT	MSG-1A	RAK-102-3
SCALE	MODEL USED ON	ASSY. NO.

UNLESS OTHERWISE SPECIFIED DIMENSIONS ARE IN INCHES AND INCLUDE CHEMICALLY APPLIED OR PLATED FINISHES	DRAWN	DATE	FINAL APPROVAL	DATE
	HLA	2-11-65		
	CHKD	2-11-65		
	ELECT. DESG	2-11-65		
	MECH. DESG	2-11-65		

A 3851

A-3851

NOTES