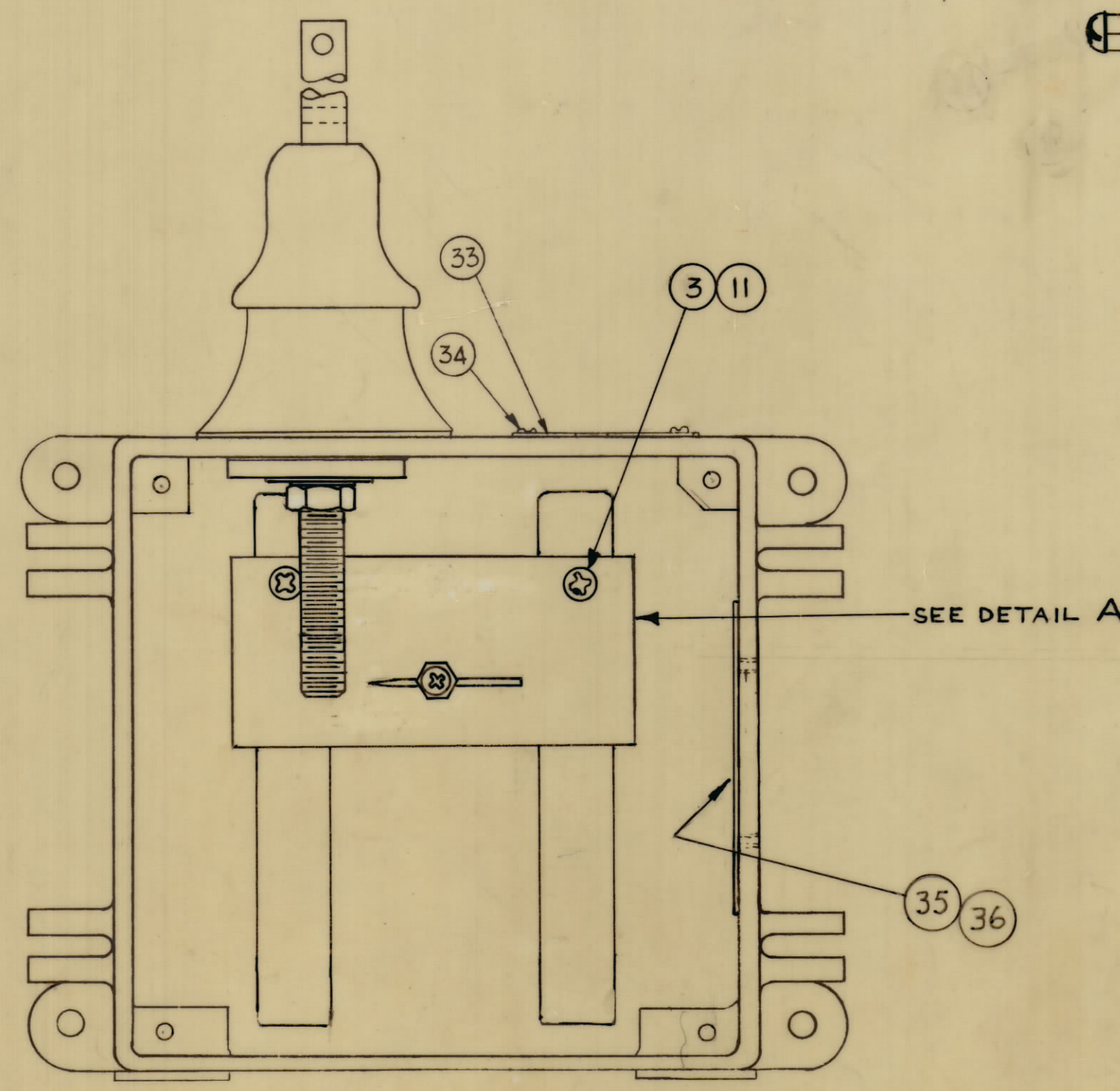
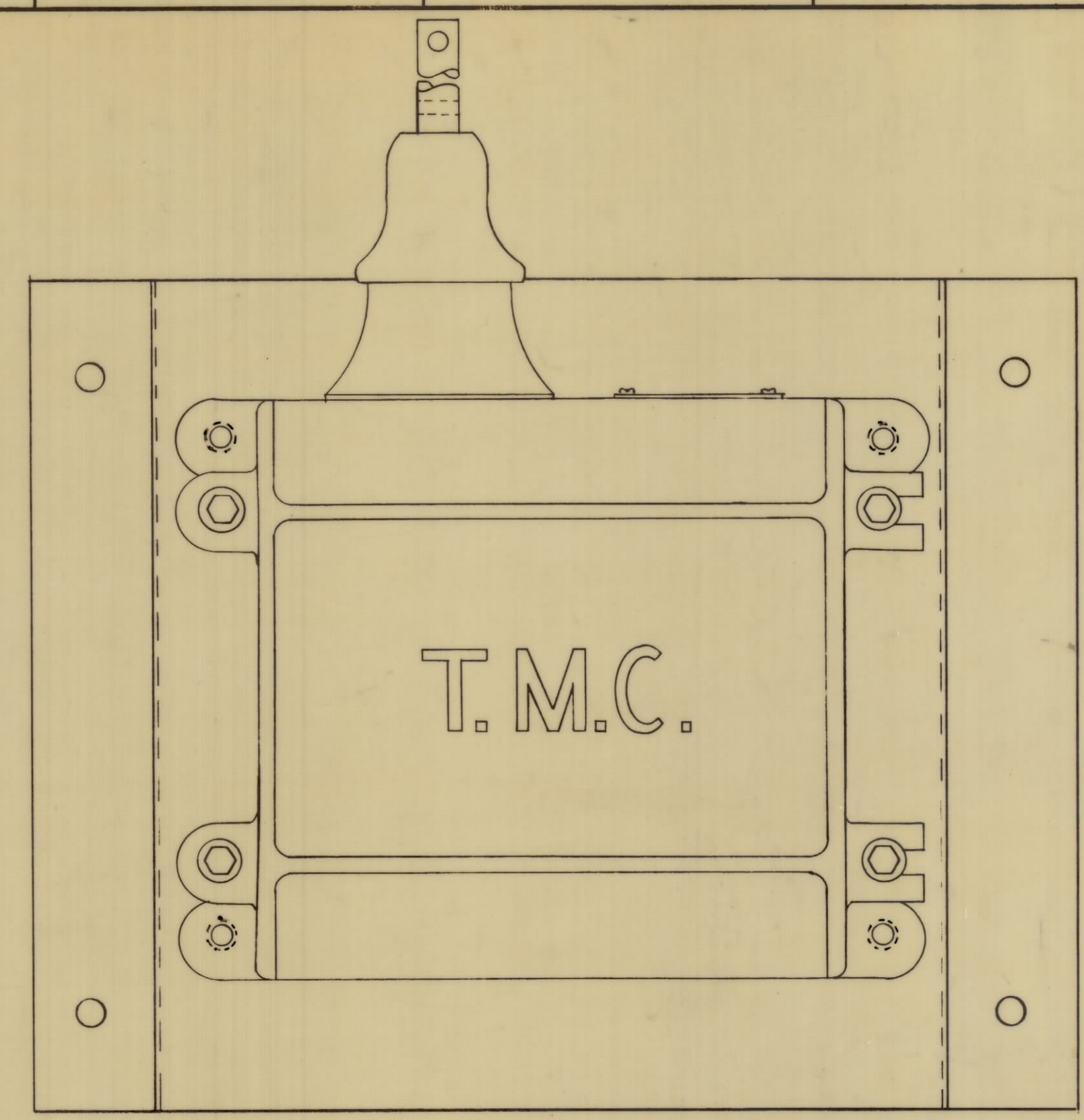
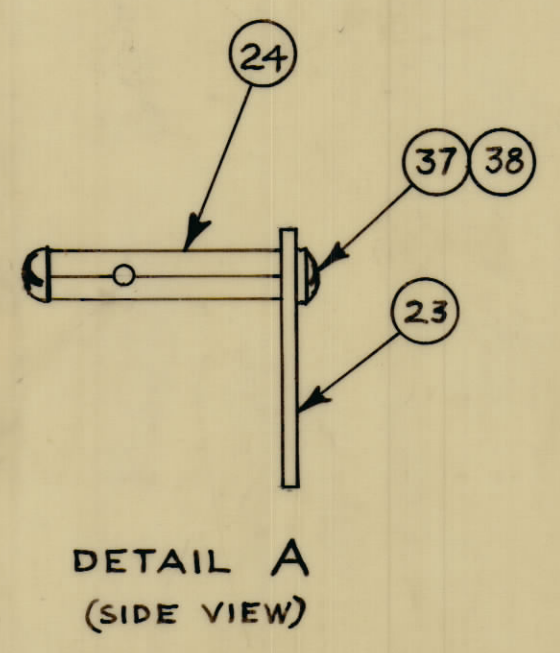


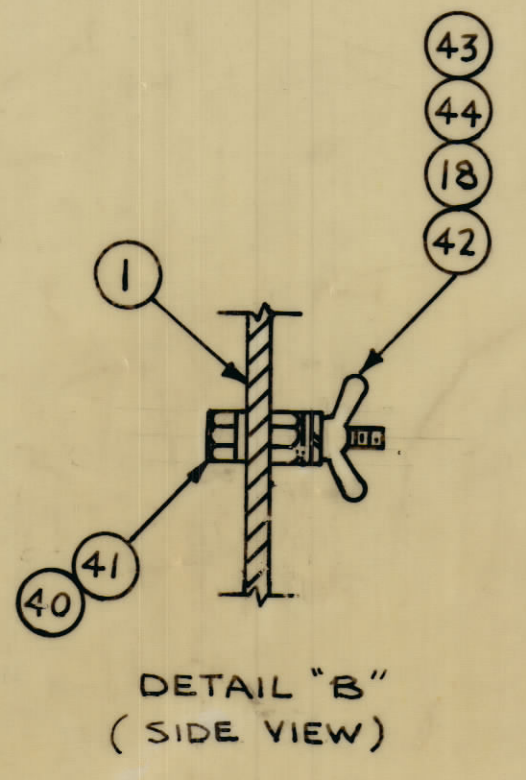
INSULATOR & MAST SUPPORT ASS'Y. DETAIL



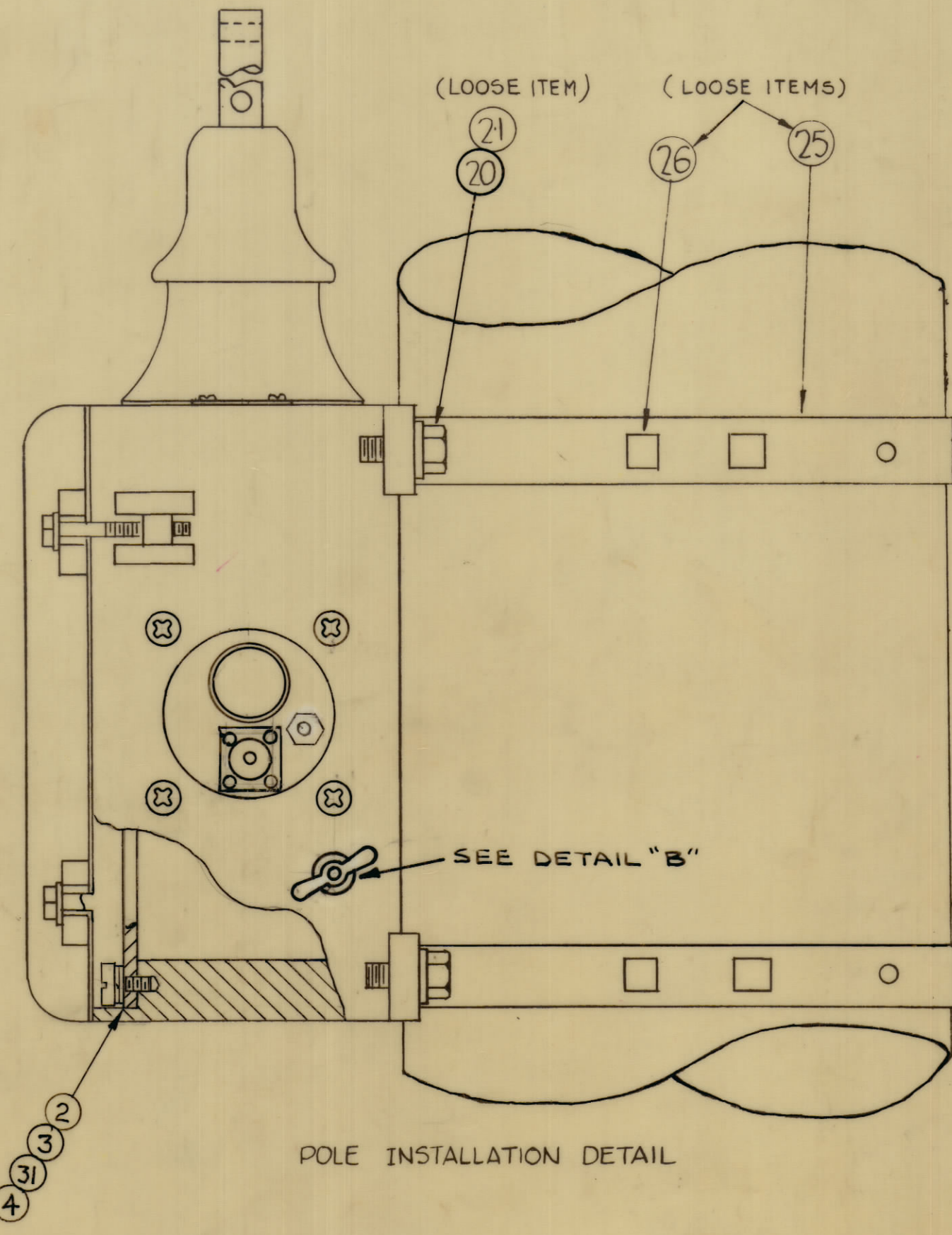
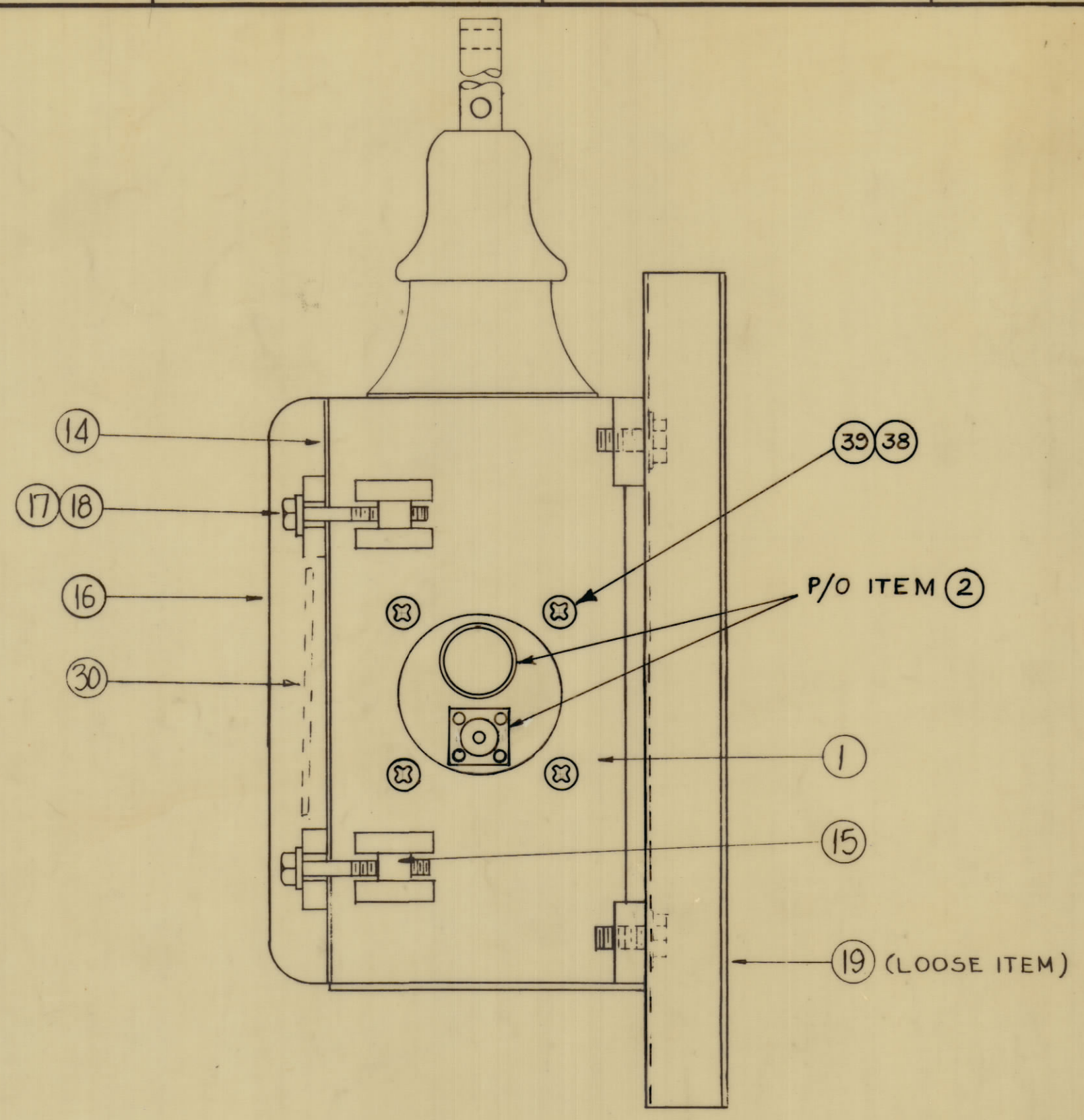
NOTE ~  
TTC-1 SHOWN W/COVER & WIRED CHASSIS ITEM ②  
REMOVED FOR CLARITY (ITEM ② SECURED TO  
CASE WITH ITEMS ③④⑤)



DETAIL A (SIDE VIEW)



DETAIL "B" (SIDE VIEW)



POLE INSTALLATION DETAIL

REQ. QTY.	ITEM	PART NO.	DESCRIPTION	SYMBOL
1	44	LWS25MRN	WASHER, LOCK, SPLIT	
1	43	NT110-2520BN	NUT, WING	
1	42	NTH2520BN14	NUT, HEX	
1	41	LWE25MRN	WASHER, LOCK, EXTERNAL	
1	40	SCHH2520BN16	SCREW, MACHINE	
4	39	SCBP0632BN12	SCREW, MACHINE	
5	38	LWE06MRN	WASHER, LOCK	
1	37	SCBP0632BN6	SCREW, MACHINE	
X	36	GL101	PLIO BOND	
1	35	GA149-10	GASKET, RUBBER	
4	34	SFB0256SN4	SCREW, SELF TAPPING	
1	33	NP712	NAME PLATE IDENTIFICATION	
1	32	PM1119	ADAPTER, ANTENNA	
4	31	FW08HBN	WASHER, FLAT	
1	30	CH394	CHART, COIL	
1	29	GA-138-5	GASKET, NEOPRENE	
1	28	FW62HBN	WASHER, FLAT	
1	27	PX-612	INSULATOR, MAST SUPPORT	
8	26	SC-111-2	BOLT, LAG (LOOSE ITEM)	
4	25	MS-619	BRACKET, MTG. (LOOSE ITEM)	
1	24	AI70	LIGHTNING ARRESTOR ASSY	
1	23	MS4023	PLATE, MTG	
1	22	AW100-6	ANTENNA, WHIP (LOOSE ITEM)	
4	21	SCHH37165S16	SCREW, MACHINE	
4	20	LWS37MSS	SPLIT, WASHER	
1	19	MS-545	CASE, SUPPORT (LOOSE ITEM)	
5	18	FW25HSS	WASHER, FLAT	
4	17	SC-108-9	BOLT, HEX	
1	16	PM-105	COVER, MACHINING	
4	15	PM-100	PIN COVER BOLT	
1	14	GA-103	GASKET, COVER	
1	13	NTH6211BN30J	NUT, HEX	
1	12	LWS62MRN	WASHER, LOCK SPLIT	
2	11	LWE08MRN	WASHER, LOCK EXTERNAL	
10	10			
1	9	SM-149	STUD, INSULATOR	
1	8	PO-215-3	CAP	
1	7	NS-131	INSULATOR, PORCELAIN	
1	6	GA-138-4	GASKET, NEOPRENE	
1	5	GA-138-3	GASKET, NEOPRENE	
4	4	LW108MRN	WASHER, LOCK	
6	3	SCBP0832BN6	SCREW, MACHINE	
1	2	A3838	CHASSIS/PANEL ASSY	
1	1	PM-1107	CASE, MACHINING	

A 3837

C	ADD IT'S. 40, 41, 42, 43 & 44.	3-22-67	18009	RME		
B	ADD 1 ITEM 10 ON D/M. IT. 32 WAS PM1119	2-7-66	1572A	HLD		
A	FS, BS IT. 30 WAS CH 222, 5 HOLE CONFIG ADDED	2-24-65	14720	MCC		
Ø	ORIGINAL RELEASE FOR PRODUCTION	9-24-64		NP		
X	EXPERIMENTAL RELEASE	9-10-64		NP		

SYM	ZONE	DESCRIPTION	DATE	CH. NO.	DRAFTS	CHECKER	ENG. APP.
		UNLESS OTHERWISE SPECIFIED:					
		DIMENSIONS ARE IN INCHES					
		TOLERANCES ON FRACTIONS ± 1/64					
		DECIMALS ± .005					
		ANGLES ± 1/2°					
		MAXIMUM ALLOWABLE TOLERANCES HAVE BEEN DETERMINED AND ANY DEVIATIONS WILL BE CAUSE FOR REJECTION. REMOVE ALL BURRS & SHARP EDGES					

REQ. PER UNIT	MODEL	SECTION	ASSY. NO.	DATE
	TTC-1			9-10-64

STOCK SIZE	
MATERIAL	
TYPE & TEMPER.	
HEAT TREAT. SPEC.	
FINISH & SPEC. NO.	
THE TECHNICAL MATERIEL CORP. MAMARONECK, NEW YORK	
FINAL ASS'Y. TTC-1	
DRW. BY	DATE
2-24-64	9-24-64
CHECKED	FINAL APPROVAL
	A 3837
ELEC. DES. APP.	MECH. DES. APP.
SHEET	OF
	C