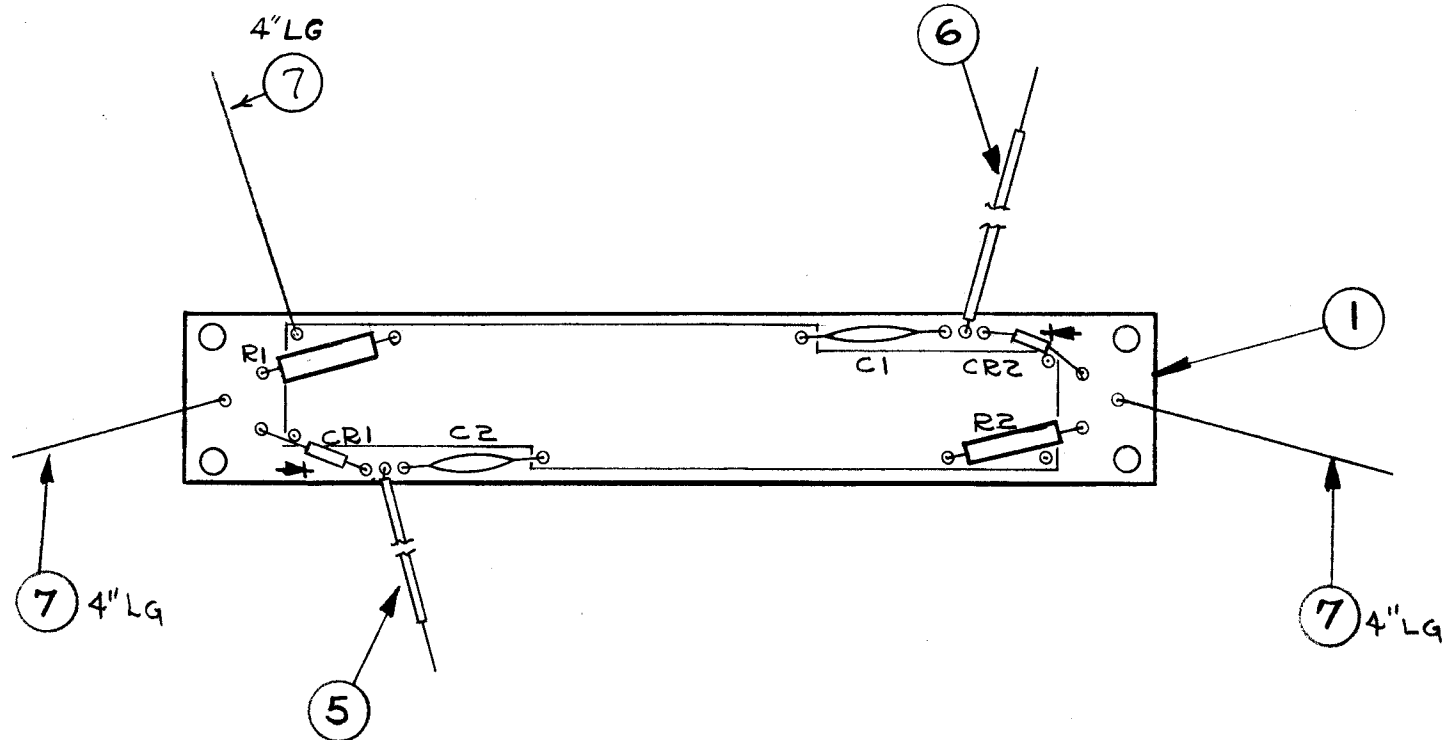


A3836

REVISIONS					
SYM	DESCRIPTION	DATE	E.M.N. NO.	DRAFT	CHKD APPD
A	COMPLETELY REDRAWN & REVISED	12-23-64	13072	<i>[Signature]</i>	@
B	WIRE FC/O No 7 ADDED. IT. 7 QTY. WAS 8"	7/29/65	14535	<i>[Signature]</i>	<i>[Signature]</i>
C	TOL ITEM 3 WAS "K" TOL	2.15.67	17827	<i>[Signature]</i>	<i>[Signature]</i>



REQ'D.	ITEM	PART NUMBER	DESCRIPTION	SYMBOL
X	8	BS100	SOLDER, TIN ALLOY	
12"	7	WL100-7	WIRE, BUSS-BAR, TINNED	
8"	6	MWC22 (7) U5	WIRE, ELECTRICAL	
8"	5	MWC22 (7) U2	WIRE, ELECTRICAL	
2	4	1N34	DIODE	CR1, CR2
2	3	RC20GF121J	RESISTOR, FIXED, COMPOSITION	R1, R2
2	2	CC100-16	CAPACITOR, FIXED, CERAMIC	C1, C2
1	1	PC177-3	PRINTED CIRCUIT BOARD	

A. DUDDLES LIST OF MATERIAL

MATERIAL	THE TECHNICAL MATERIEL CORP. MAMARONECK, NEW YORK		
FINISH	TITLE ASSEMBLY, STANDING WAVE RATIO BOARD		
UNLESS OTHERWISE SPECIFIED DIMENSIONS ARE IN INCHES AND INCLUDE CHEMICALLY APPLIED OR PLATED FINISHES	DRAWN <i>[Signature]</i>	DATE 12-23-64	FINAL APPROVAL <i>[Signature]</i>
DECIMALS .X ± .05 .XX ± .01 .XXX ± .005	TOLERANCES	ANGLES ± 1/64 ± 0° 30'	DATE 12-23-64
ELECT. DES. <i>[Signature]</i>		DATE 12-23-64	A3836 - C
MECH. DES. <i>[Signature]</i>		DATE	SHEET
			REV. LTR.

1	TTC-1	
Q'TY./UNIT	MODEL USED ON	ASS'Y. NO.
SCALE 1:1	CODE A	

NOTES

THE CONTENTS OF THIS DRAWING ARE THE EXCLUSIVE PROPERTY OF THE TECHNICAL MATERIEL CORP. ITS UNAUTHORIZED USE OR REPRODUCTION IN WHOLE OR IN PART IS STRICTLY FORBIDDEN.