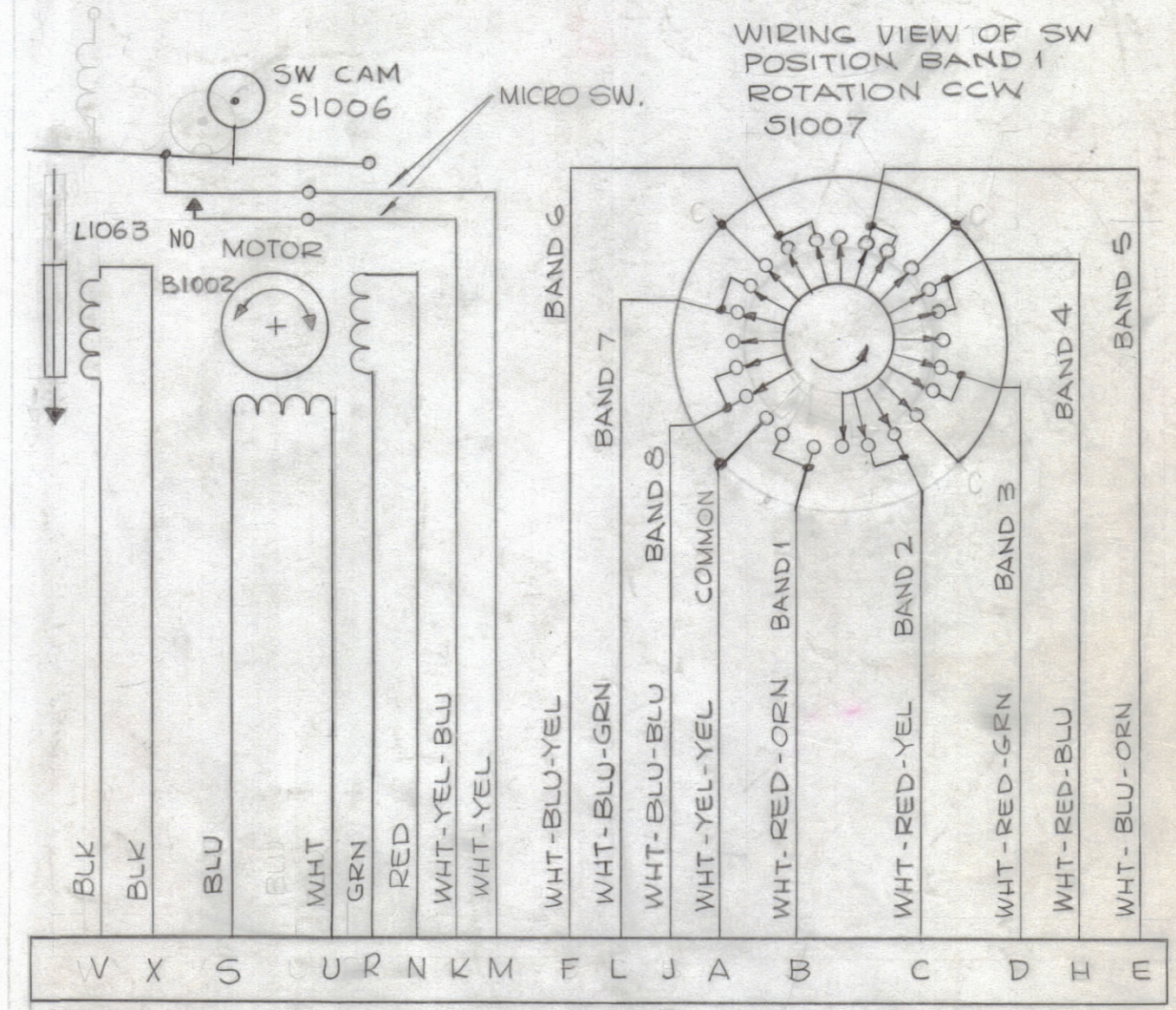
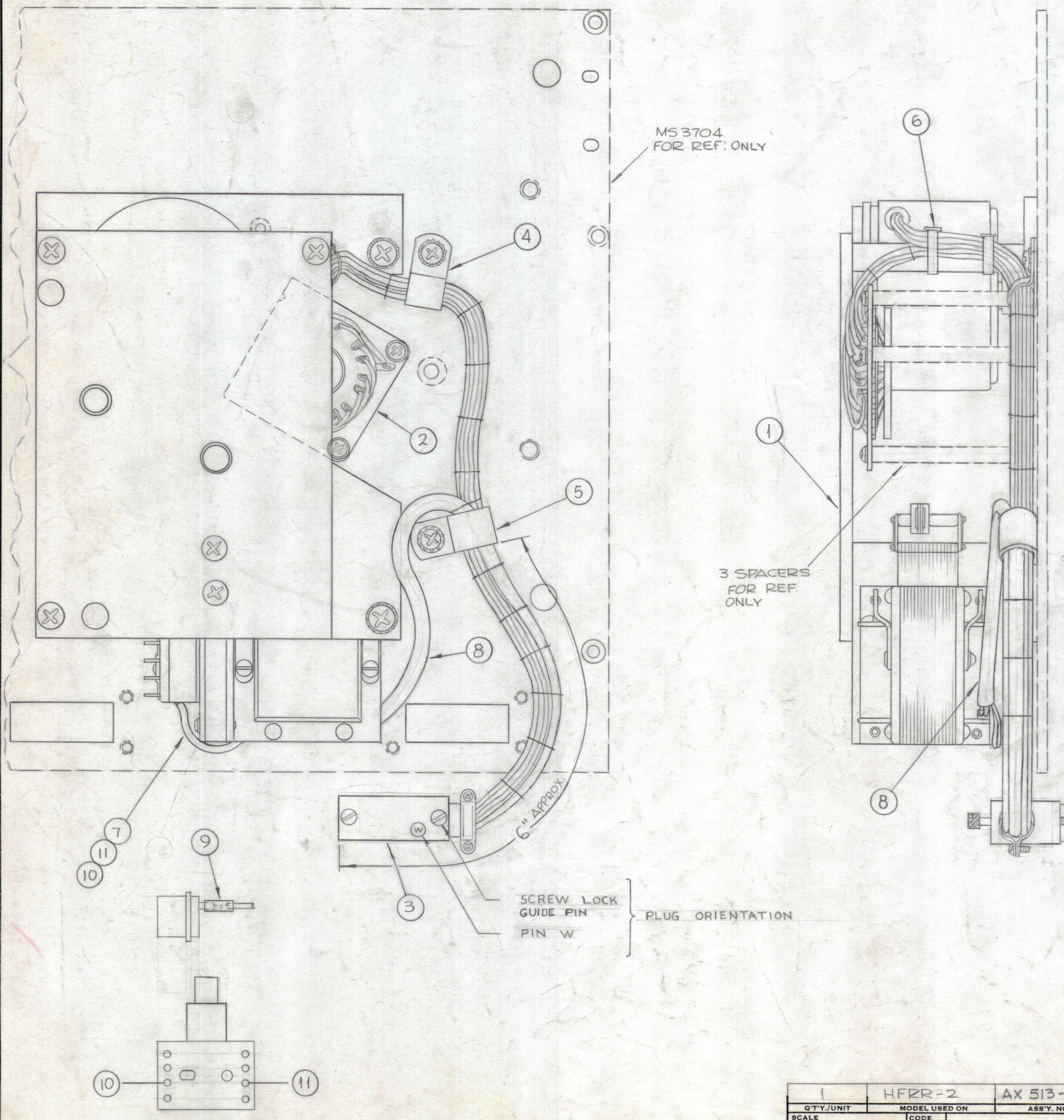


REVISIONS							
ZONE	SYM	DESCRIPTION	DATE	E.M.N. NO.	DRAFT	CHKD	APPD
	X	EXPERIMENTAL RELEASE	7-16-64	0	SRG		
	X1	51007 CLARIFIED	7-23-64	#	GOL		
	X2	TITLE WAS WIRING, BAND SWITCH, GEAR TRAIN	8-4-64	#	G.D.L.		
B5	X3	ADDED PIN W	9-2-64		AR.		
	Ø	ORIGINAL RELEASE FOR PRODUCTION	9-2-64	Ø	J.P.		



PI007 - SCHEMATIC DIAGRAM -

REQ'D.	ITEM	PART NUMBER	DESCRIPTION	SYMBOL
X	13	CD101-1MW	CORD, LACING	
X	12	BS100	SOLDER, TIN ALLOY	
15"	11	WI-140-B22N 94	WIRE, ELECTRICAL	WHT/YEL
15"	10	WI-140-B22N 946	WIRE, ELECTRICAL	WHT-YEL-BLU
X	9	PX 830-18-1	SLEEVING, INSULATION	
X	8	PX100-1-234	SLEEVING, INSULATION	
X	7	PX100-1-118	SLEEVING, INSULATION	
4	6	CU142-6-9	STRAP, CABLE	
1	5	CU102-5	CLAMP 'G' TYPE	
1	4	CU102-4	CLAMP 'G' TYPE	
1	3	PL-225-6P	PLUG	
1	2	A 3745	NOTCH HOMING SWITCH WIRING ASS'Y	
1	1	A 3533	GEAR ASS'Y	

J. ANGER LIST OF MATERIAL			
MATERIAL	THE TECHNICAL MATERIEL CORP. MAMARONECK, NEW YORK		
FINISH	TITLE BAND SWITCH GEAR ASS'Y, AUTOMATIC		
UNLESS OTHERWISE SPECIFIED DIMENSIONS ARE IN INCHES AND INCLUDE CHEMICALLY APPLIED OR PLATED FINISHES	DRAWN SRG	DATE 7-16-64	FINAL APPROVAL RAC
DECIMALS .X ± .05 .XX ± .01 .XXX ± .005	CHECKED @	DATE 7-2-64	DATE 7/27/64
TOLERANCES FRACTIONS ± 1/64 ANGLES ± 0° 30'	ELECT. DES. J. Anger	DATE 7/27/64	DATE
	MECH. DES.	DATE	DATE
		SHEET A3746	REV. LTR. Ø

Q'TY./UNIT	MODEL USED ON	ASS'Y. NO.
SCALE 1:1	CODE A	

NOTES

THE CONTENTS OF THIS DRAWING ARE THE EXCLUSIVE PROPERTY OF THE TECHNICAL MATERIEL CORP. ITS UNAUTHORIZED USE OR REPRODUCTION IN WHOLE OR IN PART IS STRICTLY FORBIDDEN.

A3746