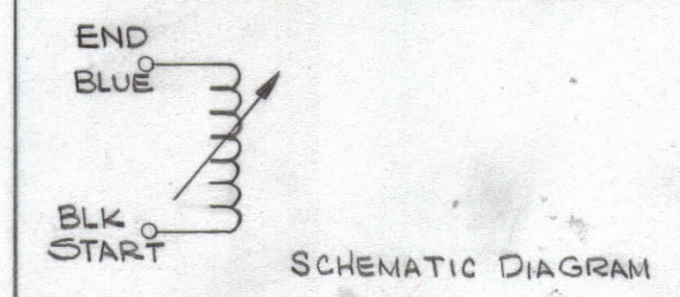
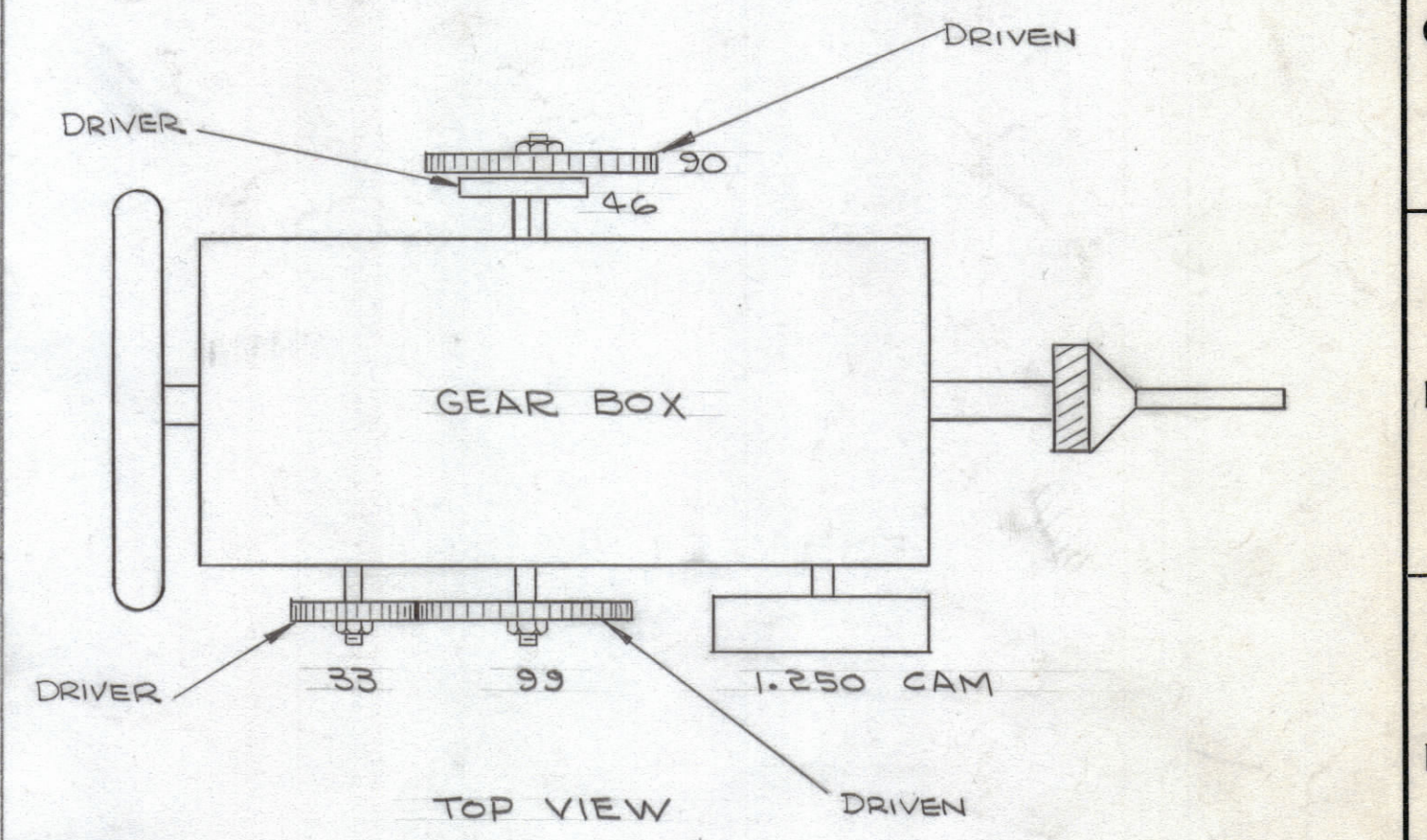
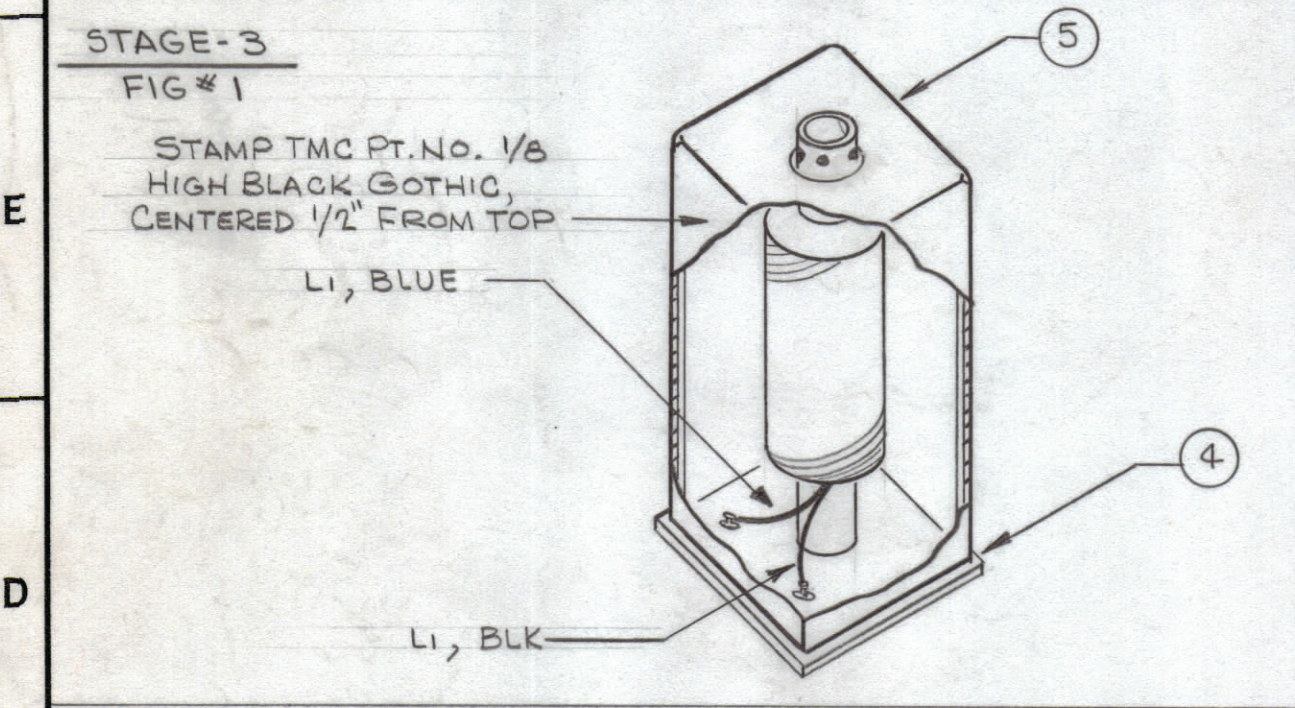
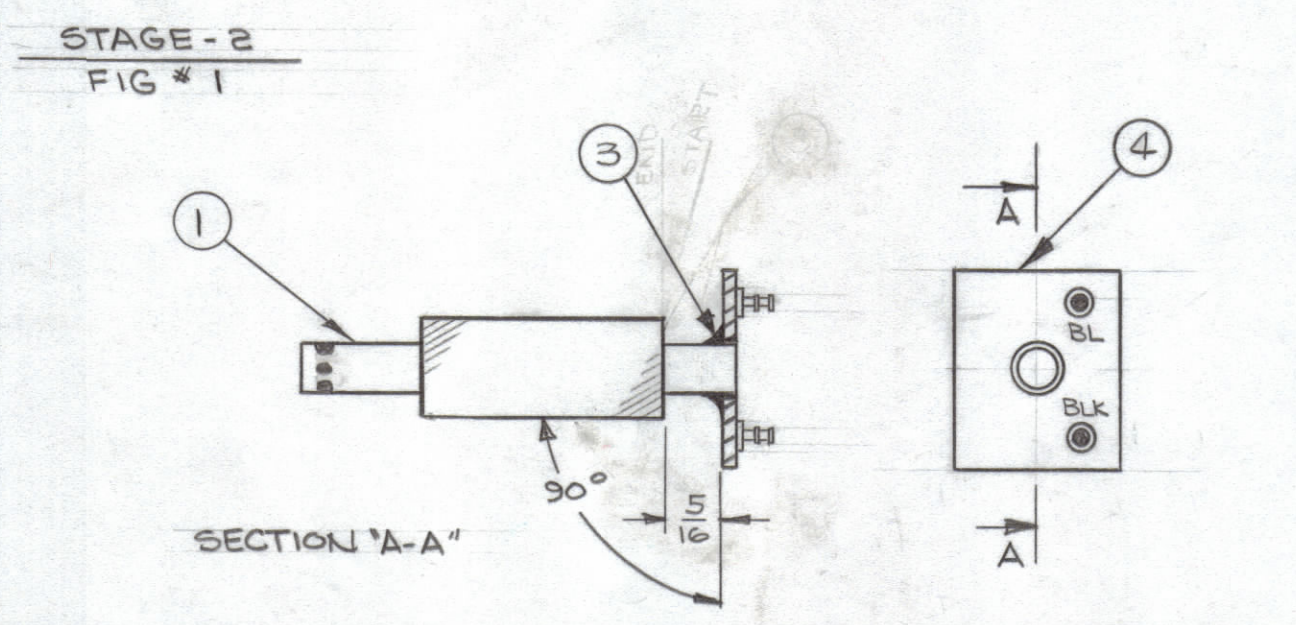
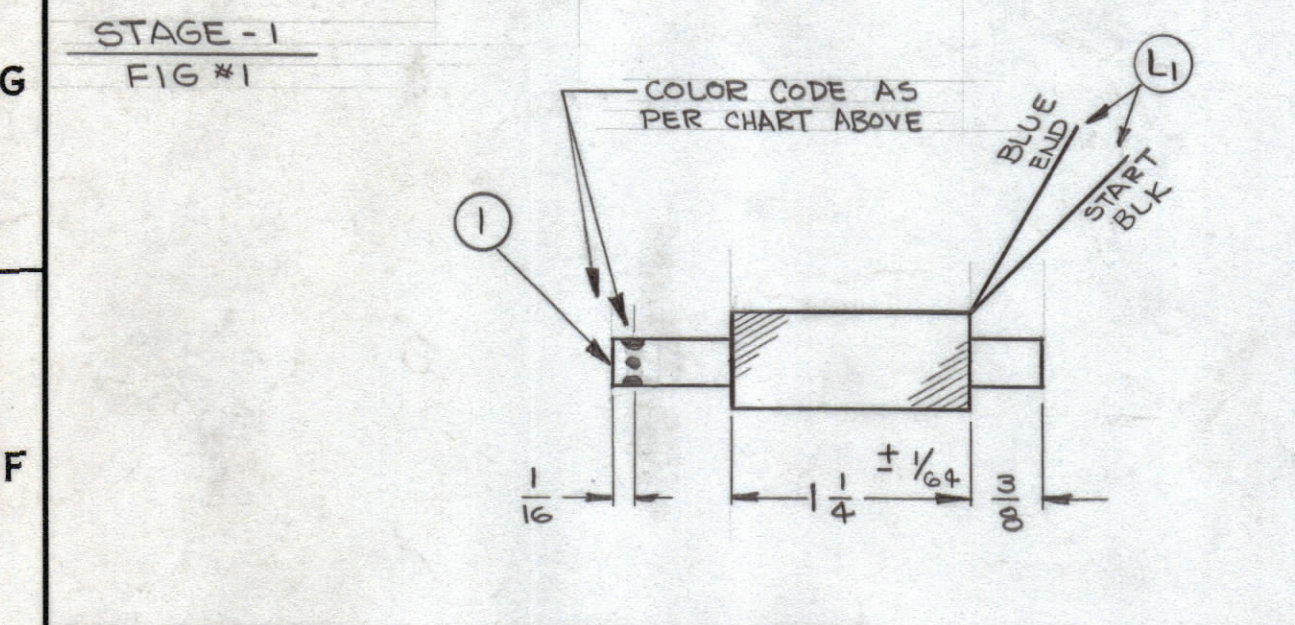


TMC MFG ASSY NUMBER	TMC PART NUMBER	NUMBER OF TURNS	TEST FREQUENCY					COLOR CODE	OSC REQ	REQ	REQ
			L1 ± 2%								
			L1	F	L	Q	R				
A3734-1	AC208	682	10KC	903uh	+	16.5uH ±15%	BLK-RED-ORN	1,2 & 3	3		
A3734-2	AC209	375	10KC	223uh	-	8.1uH ±15%	BLK-RED-GRN	4 & 5	2		

REVISIONS						
ZONE	SYM	DESCRIPTION	DATE	E.M.N. NO.	DRAFT	CHKD
X1		REDRAWN & REDESIGNED	11-9-64	X1		
X2		CHART & PICTORIAL UPDATED	2-23-64	X2		
X3		ADD. PROCEDURE & NOTE; ADD. TEST FREQ; ADD. SCHEM. DIAG.; ADD. IT. 7	3-15-65	X3	HCA	
		ORIGINAL RELEASE FOR PRODUCTION	4-20-65			



- PROCEDURE**
1. ASSEMBLE ITEM 1 TO ITEM 4 USING ITEM 3. BAKE AT 250°F. FOR 1 HOUR.
 2. WIND L1, STARTING 3/8 FROM END OF COIL FORM.
 3. STAKE LEADS TO COIL FORM WITH ITEM 7.
 4. ALL WINDINGS ARE WOUND WITH THE GEAR RATIO SHOWN.
 5. CUT ALL LEADS TO WITHIN 1" OF BASE OF COIL FORM. STRIP & TIN TO BASE OF COIL FORM.
 6. COLOR CODE LEADS, TERMINAL BOARD & COIL FORM AS SHOWN.
 7. TEST INDUCTANCE PER CHART ABOVE PRIOR TO CONNECTING LEADS TO TERMINAL BOARD. USE MARCONI MODEL TF1313 UNIVERSAL BRIDGE (1/4%).
 8. SOLDER LEADS TO RESPECTIVE TERMINALS AND ASSEMBLE AS SHOWN.

- NOTES**
1. USE 265 TO 270 GRAMS TENSION ON WIRE GUIDE. CHECK FREQUENTLY.
 2. TEST IN ACCORDANCE WITH S947.

REQ'D.	ITEM	PART NUMBER	DESCRIPTION	SYMBOL
X	7	GL103	ADHESIVE, N-CEL	
X	6	BS100	GOLDER, TIN ALLOY	
1	5	A3931	CAN	
1	4	A3932-2	TERMINAL BOARD ASSY	
X	3	GL125	EPOXY ADHESIVE, SEALANT	
X	2	WI104-7-41-SNQS	WIRE, ELECTRICAL, LITZ	
1	1	CF137-2.218	COIL FORM	

LIST OF MATERIAL			
MATERIAL	THE TECHNICAL MATERIEL CORP. MAMARONECK, NEW YORK		
FINISH	TITLE TRANSFORMER ASSY, OSC.		
UNLESS OTHERWISE SPECIFIED DIMENSIONS ARE IN INCHES AND INCLUDE CHEMICALLY APPLIED OR PLATED FINISHES	DRAWN	DATE	FINAL APPROVAL
DECIMALS X ± .05 .XX ± .01 .XXX ± .005	<i>G. Lenan</i>	11-9-64	<i>[Signature]</i>
FRACTIONS ± 1/64 ANGLES ± 0° 30'	CHECKED	DATE	
TOLERANCES	<i>[Signature]</i>	3-7-65	
	ELECT. DES.	DATE	
	<i>[Signature]</i>		A3734
	MECH. DES.	DATE	

VLRB-1		
Q'TY./UNIT	MODEL USED ON	ASSY. NO.
SCALE NONE	CODE A	
THE CONTENTS OF THIS DRAWING ARE THE EXCLUSIVE PROPERTY OF THE TECHNICAL MATERIEL CORP. ITS UNAUTHORIZED USE OR REPRODUCTION IN WHOLE OR IN PART IS STRICTLY FORBIDDEN.		

NOTES

A3734