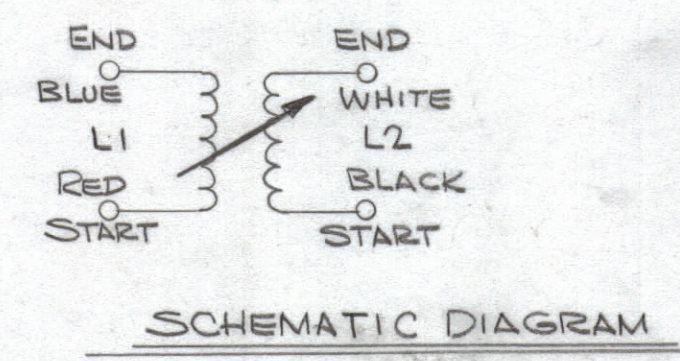
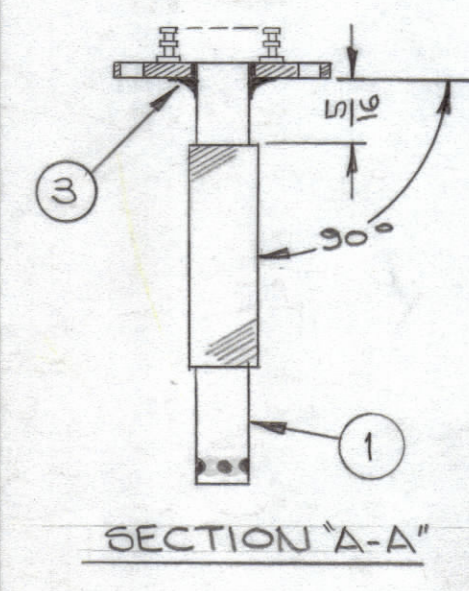
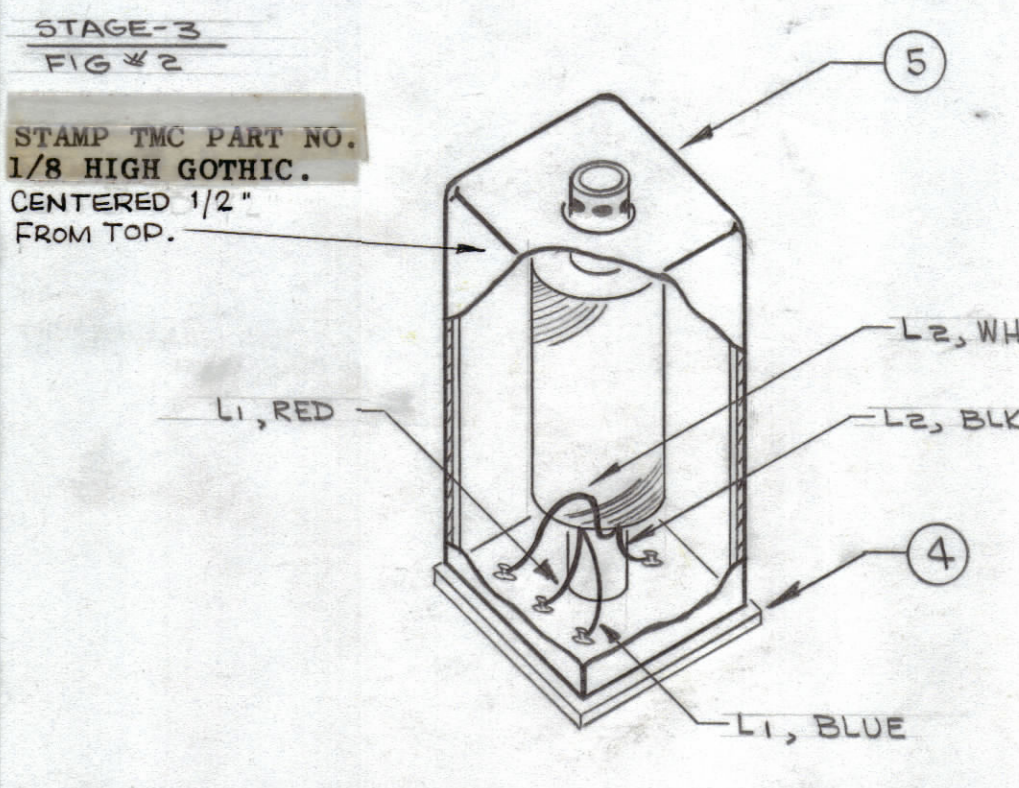
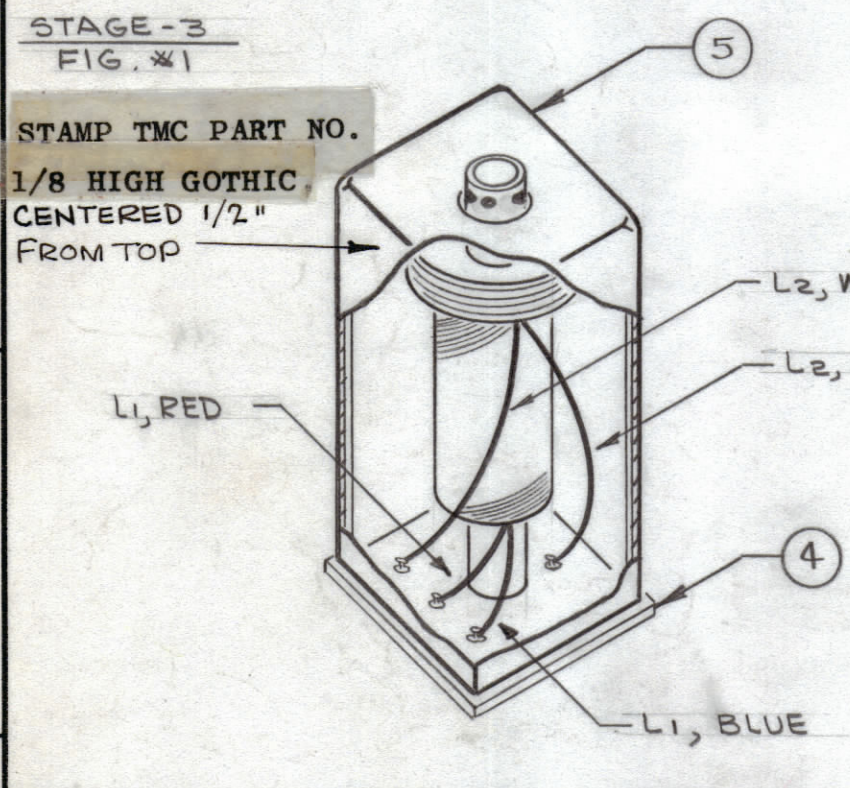
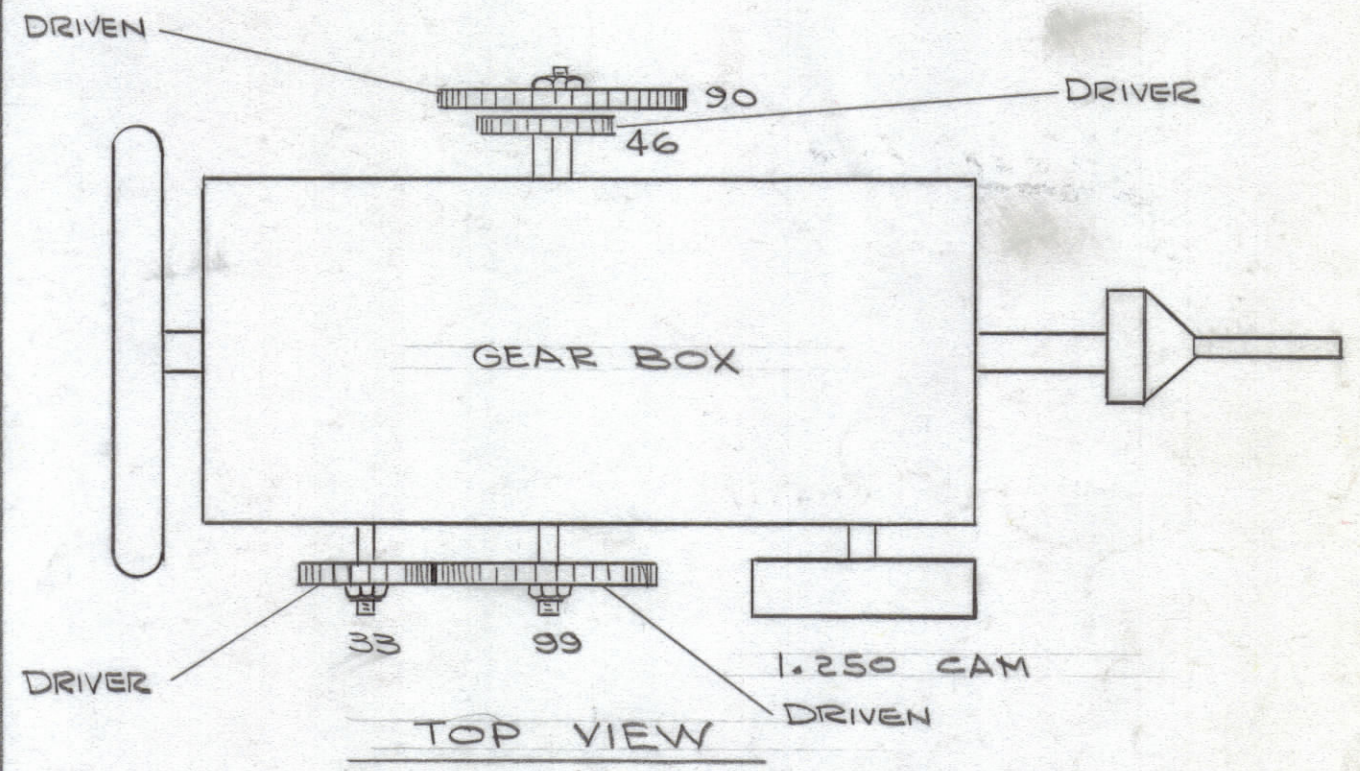
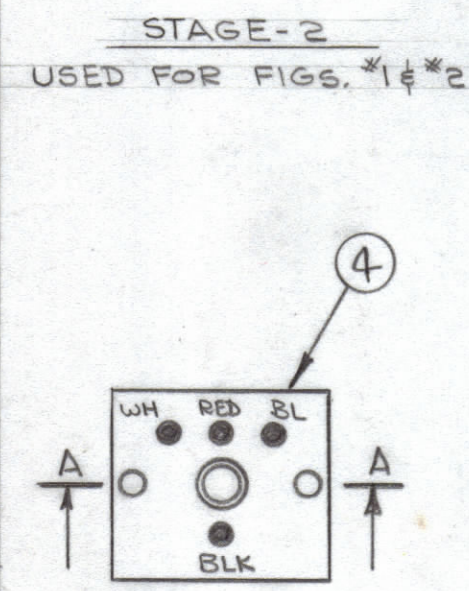
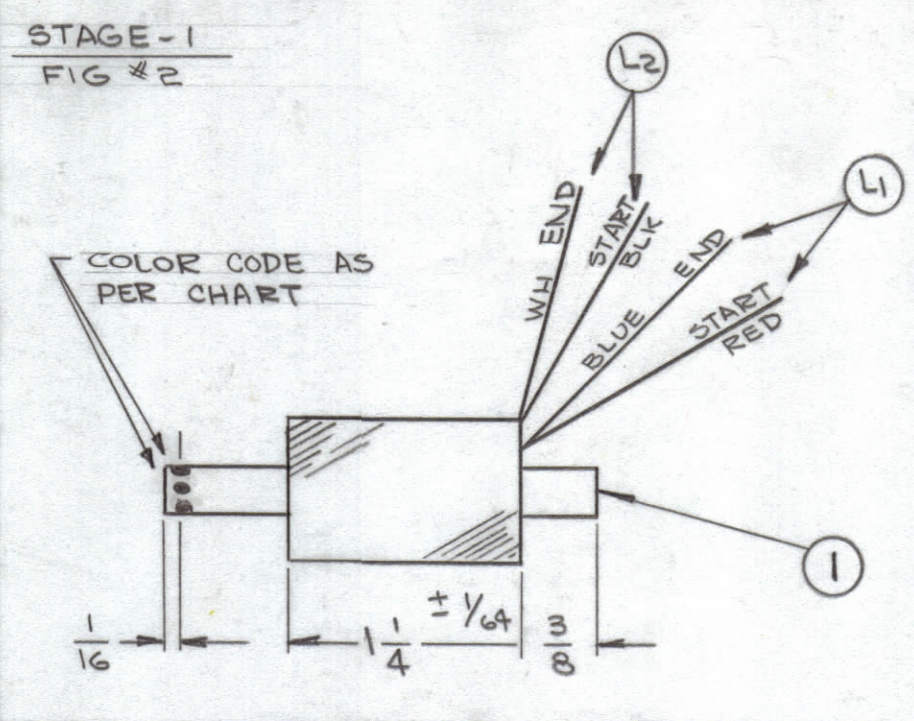
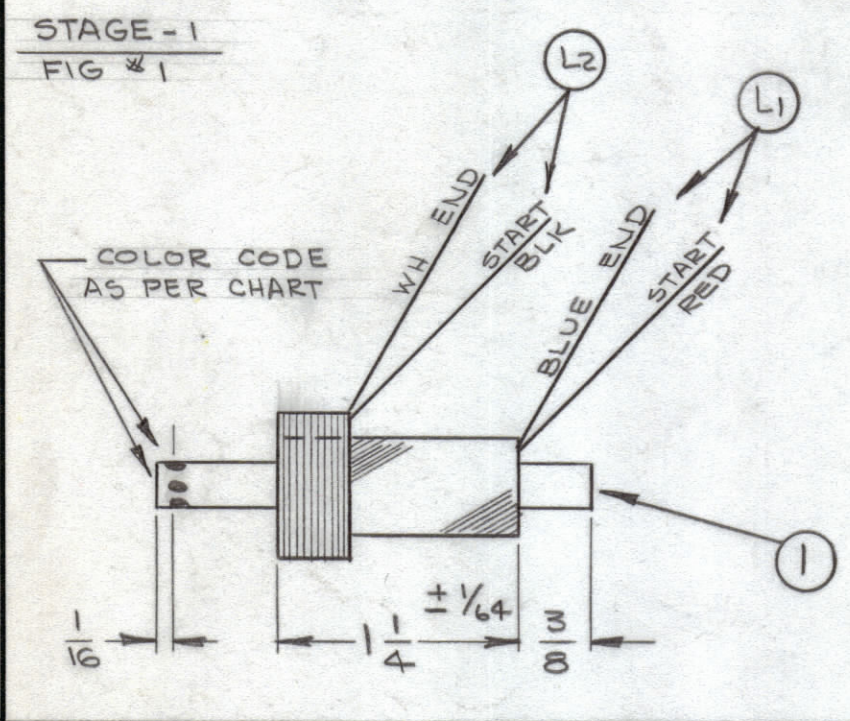


TMC MFG ASSY. NO.	TMC PART NO.	NUMBER OF TURNS (APPROX)		TEST FREQUENCY L1 ± 2%				TEST FREQUENCY L2 ± 10%				FIGURE	COLOR CODE COIL FORM	BAND	R.F.	REQ.
		L1	L2	F	L	Q	R	F	L	Q	R					
		A3732-1	TT211	860	210	10KC	1.556mh	→	21.0k ± 15%	10KC	215uh					
A3732-2	TT212	473	100	10KC	377uh	→	11.0k ± 15%	10KC	295uh	→	7.5k ± 15%	2	-ORN	3	3 RD	1
A3732-3	TT213	260	50	10KC	101uh	→	5.0k ± 15%	10KC	59uh	→	1.10k ± 15%	2	-YEL.	4	3 RD	1
A3732-4	TT214	136	18	10KC	26.2uh	→	2.4k ± 15%	10KC	24uh	→	4.0k ± 15%	1	BLK-ORN-GRN	5	3 RD	1

REVISIONS							
ZONE	SYM	DESCRIPTION	DATE	E.M.N. NO.	DRAFT	CHKD	APPD
#	X1	REDRAWN & REDESIGNED	11-10-64	X1			
#	X2	CHART & PICTORIAL UPDATED	12-23-64	X2			
#	X3	CHART & PICTORIAL UPDATED; ADD. PROCEDURE	3-26-65	X3			
	Ø	ORIGINAL RELEASE FOR PRODUCTION	4-20-65	Ø			



A3732

—PROCEDURE—

- ASSEMBLE ITEM 1 TO ITEM 3 USING ITEM 4. BAKE AT 250°F. FOR 1 HOUR.
- WIND L1 FIRST, STARTING 3/8" FROM END OF COIL FORM.
- WHEN L1 WINDING IS COMPLETED PULL OUT A LOOP OF WIRE.
- START L2 WHERE L1 ENDS.
- STAKE LEADS TO COIL FORM WITH ITEM 7.
- ALL WINDINGS ARE WOUND WITH THE GEAR RATIO SHOWN EXCEPT L2 OF A3732-4.
- L2 OF A3732-4 IS CLOSE WOUND BY HAND ON TOP OF L1 AS SHOWN IN FIG.# 1 AND IN SAME DIRECTION AS L1.
- CUT ALL LEADS TO WITHIN 1" OF BASE OF COIL FORM. STRIP AND TIN TO BASE OF COIL FORM.
- COLOR CODE LEADS, TERMINAL BOARD AND COIL FORM AS SHOWN.
- TEST INDUCTANCE AS PER CHART ABOVE PRIOR TO CONNECTING LEADS TO TERMINAL BOARD. USE MARCONI MODEL TF1313 UNIVERSAL BRIDGE (1/4%).
- SOLDER LEADS TO RESPECTIVE TERMINALS AND ASSEMBLE AS SHOWN.

—NOTE—

- MAINTAIN 265 TO 270 GRAMS TENSION ON WIRE GUIDE. CHECK TENSION FREQUENTLY.
- TEST IN ACCORDANCE WITH S947.

REQ'D.	ITEM	PART NUMBER	DESCRIPTION	SYMBOL
X	7	GL103	ADHESIVE, N-CEL	
X	6	BS100	SOLDER, TIN ALLOY	
1	5	A3930	CAN	
1	4	A3933-2	TERMINAL BOARD ASSY	
X	3	GL125	EPOXY ADHESIVE, SEALANT	
X	2	WI104-7-41-SNQS	WIRE, ELEC., LITZ	
1	1	CF137-2.218	COIL FORM	

LIST OF MATERIAL				
MATERIAL	THE TECHNICAL MATERIEL CORP. MAMARONECK, NEW YORK			
FINISH	TRANSFORMER. ASSY, 3 RD R.F.			
DRAWN	DATE	FINAL APPROVAL	DATE	
CHECKED	DATE			
ELECT. DES.	DATE	A3732		
MECH. DES.	DATE	SHEET		REV. LTR.

VLRB-1		
QTY./UNIT	MODEL USED ON	ASS'Y. NO.
SCALE	CODE	
NONE	A	
THE CONTENTS OF THIS DRAWING ARE THE EXCLUSIVE PROPERTY OF THE TECHNICAL MATERIEL CORP. ITS UNAUTHORIZED USE OR REPRODUCTION IN WHOLE OR IN PART IS STRICTLY FORBIDDEN.		
DECIMALS .X ± .05 .XX ± .01 .XXX ± .005	TOLERANCES	FRACTIONS ± 1/64 ANGLES ± 0° 30'

NOTES