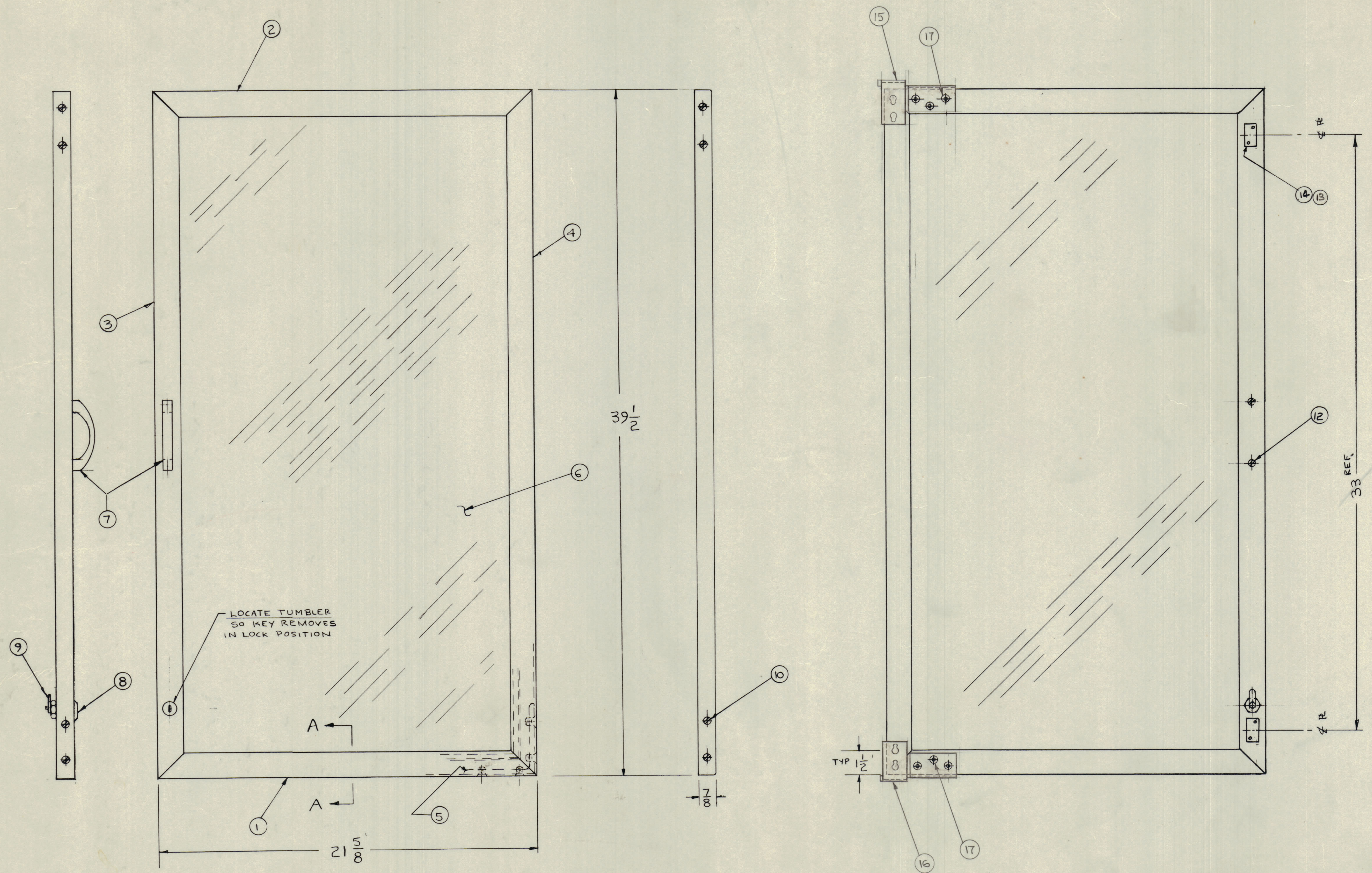
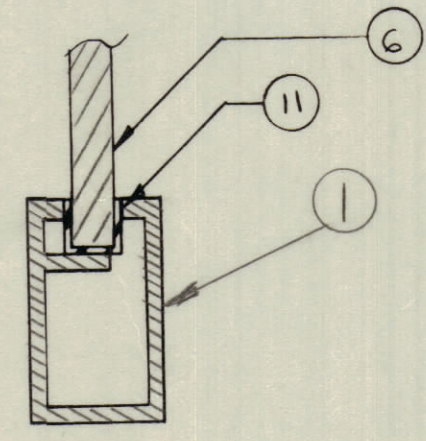


| REVISIONS |     |                                 |          |            |       |      |
|-----------|-----|---------------------------------|----------|------------|-------|------|
| ZONE      | SYM | DESCRIPTION                     | DATE     | E.M.N. NO. | DRAFT | CHKD |
| #         | X   | EXPER. RELEASE                  | 10-14-64 | X          |       |      |
|           |     | ORIGINAL RELEASE FOR PRODUCTION | 11-25-64 |            |       |      |



LOCATE TUMBLER  
SO KEY REMOVES  
IN LOCK POSITION



SECTION A-A

A 3716

| REQ'D. | ITEM | PART NUMBER  | DESCRIPTION              | SYMBOL |
|--------|------|--------------|--------------------------|--------|
| 6      | 17   | SCFP1032BN12 | SCREW, MACHINE           |        |
| 1      | 16   | H1119        | HINGE, BOTTOM            |        |
| 1      | 15   | H1118        | HINGE, TOP               |        |
| 4      | 14   | SCBP0440BNG  | SCREW, MACHINE           |        |
| 2      | 13   | MS3886       | PLATE, MAGNET            |        |
| 2      | 12   | SCBP0832BN16 | SCREW, MACHINE           |        |
| 120"   | 11   | RY140-2-120  | CHANNEL, RUBBER          |        |
| 16     | 10   | SCFP1032SN16 | SCREW, MACHINE           |        |
| 1      | 9    | PM1113       | CAM, LOCK                |        |
| 1      | 8    | LK106        | LOCK, RIM                |        |
| 1      | 7    | HA120        | HANDLE, BOW              |        |
| 1      | 6    | GS101-1      | WINDOW, GLASS            |        |
| 4      | 5    | PM 1087      | WINDOW FRAME, ANGLE      |        |
| 1      | 4    | PM 1086      | WINDOW FRAME, RIGHT SIDE |        |
| 1      | 3    | PM 1085      | WINDOW FRAME, LEFT SIDE  |        |
| 1      | 2    | PM 1083-2    | WINDOW FRAME, TOP        |        |
| 1      | 1    | PM 1083-1    | WINDOW FRAME, BOTTOM     |        |

| STURMER LIST OF MATERIAL |        |  |      |
|--------------------------|--------|--|------|
| MATERIAL                 | FINISH | TITLE  | DATE |
|                          |        | THE TECHNICAL MATERIEL CORP.<br>MAMARONECK, NEW YORK |      |
|                          |        | WINDOW ASSEMBLY                                      |      |

| QTY./UNIT | MODEL USED ON | ASSY. NO. |
|-----------|---------------|-----------|
| 1         | RAK 102-1     | A3896     |

| SCALE | CODE | UNLESS OTHERWISE SPECIFIED DIMENSIONS ARE IN INCHES AND INCLUDE CHEMICALLY APPLIED OR PLATED FINISHES | DRAWN | DATE     | FINAL APPROVAL | DATE |
|-------|------|---|-------|----------|----------------|------|
|       | A    |   |       | 11-25-64 |                |      |

| DECIMALS | FRACTIONS | TOLERANCES | MECH. DES. | DATE     | SHEET | REV. LTR. |
|----------|-----------|------------|------------|----------|-------|-----------|
| ± .05    | ± 1/64    |            |            | 11/25/64 |       |           |
| ± .01    | ANGLES    | ± 0° 30'   |            |          |       |           |
| ± .005   |           |            |            |          |       |           |

NOTES

THE CONTENTS OF THIS DRAWING ARE THE EXCLUSIVE PROPERTY OF THE TECHNICAL MATERIEL CORP. ITS UNAUTHORIZED USE OR REPRODUCTION IN WHOLE OR IN PART IS STRICTLY FORBIDDEN.