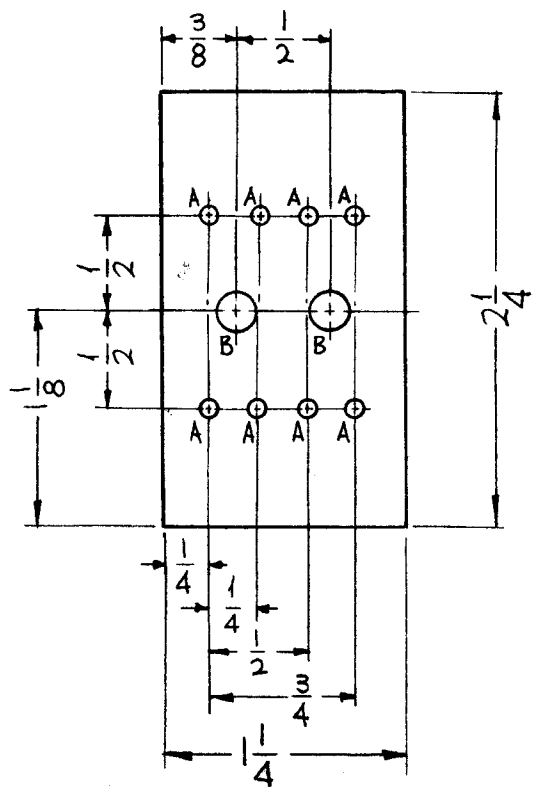


**HOLES:**

A- #48 DRILL (.076 DIA.) 8 REQ.

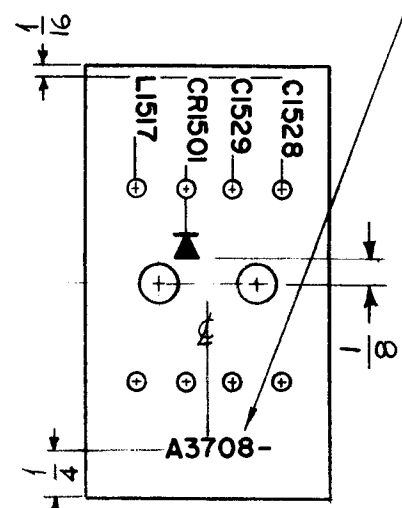
B- #8 DRILL (.189 DIA.) 2 REQ.



MACHINING - (A3708-1)

MATERIAL - XXXP PHENOLIC 1/8 THICK

MARK TMC PART NO. W/LATEST REV. LETTER



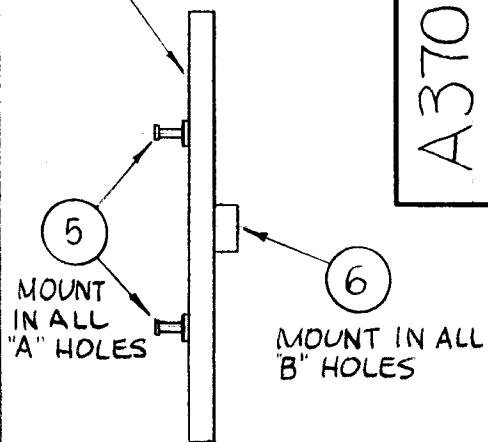
UNLESS OTHERWISE SPECIFIED:  
MARKING PROCESS: AS PER TMC SPEC. S727

LETTERING - 3/32 HIGH BLACK GOTHIC LOCATED AS SHOWN

FUNGUS PROOFING PER TMC SPEC. S-113, AFTER MARKING PROCESS.

MARKING (A3708-2)

LETTERING ON THIS SIDE



SUB ASS'Y (A3708-3)

A3708

**REVISIONS**

SYM	DESCRIPTION	DATE	E.M.N. NO.	DRAFT	CHKD	APPD
X	EXPER. RELEASE	6-17-64	1	SRG	@	
O	ORIGINAL RELEASE FOR PRODUCTION	7.7.64		WB		
A	DESCRIPTIONS UPDATED, IT.1 WAS CL 240-12 IT.2 WAS IN 463, IT.8&9 WERE MWC (7)22	9.21.64	12430	WB	@	JLC
B	IT.3 CM15C150G03YY WAS CM15C150G	6-17-65	14271	D.V.V.		R

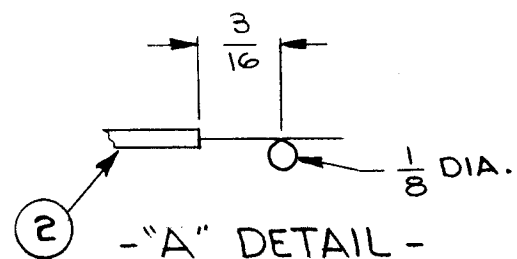
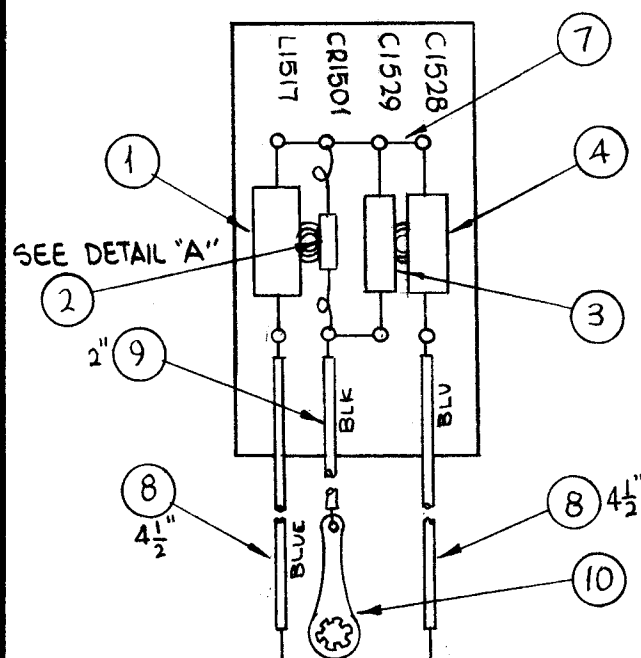
REQ'D.	ITEM	PART NUMBER	DESCRIPTION	SYMBOL
X	11	BS100	SOLDER, TIN ALLOY	
1	10	TE 104-2	TERMINAL, LUG, LOCKING	
X	9	MWC22 (7) U0	WIRE, ELEC, INS.	
X	8	MWC22 (7) U6	WIRE, ELEC, INS.	
X	7	WL100-8	WIRE, ELEC, BUSS	
2	6	TE108-8	NUT, PLAIN, CLINCH	B
8	5	TE127-4	TERMINAL, STUD	A
1	4	CC21CJ030D	CAP. FIXED, CER.	C1528
1	3	CM15C150G03YY	CAP. FIXED, MICA	C1529
1	2	1N463	DIODE	CR1501
1	1	CL240-120	COIL, RF, FIXED	L1517

AALTONEN

LIST OF MATERIAL

MATERIAL SEE MACHINING		THE TECHNICAL MATERIEL CORP. MAMARONECK, NEW YORK			
FINISH //		TITLE TERMINAL BOARD METERING CIRCUIT			
UNLESS OTHERWISE SPECIFIED DIMENSIONS ARE IN INCHES AND INCLUDE CHEMICALLY APPLIED OR PLATED FINISHES		DRAWN SRG	DATE 6-17-64	APPROVAL RJC	
		CHECKED @	DATE 7-7-64		
		ELECT. DES. JLC	DATE 7/7/64	A3708	
		MECH. DES.	DATE	B	
		SHEET		REV. LT	

**ELECTRICAL ASS'Y (A3708-4)**



2 - "A" DETAIL -  
HEAT SINK TURNS IN LEADS OF  
ITEM 2 FORMED WITH CHAIN  
NOSE PLIERS (2 REQ)

1	TTR-10/AX418	A2777
Q'TY./UNIT	MODEL USED ON	ASS'Y. NO.
SCALE 1:1	CODE A	
THE CONTENTS OF THIS DRAWING ARE THE EXCLUSIVE PROPERTY OF THE TECHNICAL MATERIEL CORP. ITS UNAUTHORIZED USE OR REPRODUCTION IN WHOLE OR IN PART IS STRICTLY FORBIDDEN.		

DECIMALS .X ± .05 .XX ± .01 .XXX ± .005	TOLERANCES	FRACTIONS ± 1/64 ANGLES ± 0° 30'
--------------------------------------------------	------------	-------------------------------------------

**NOTES**