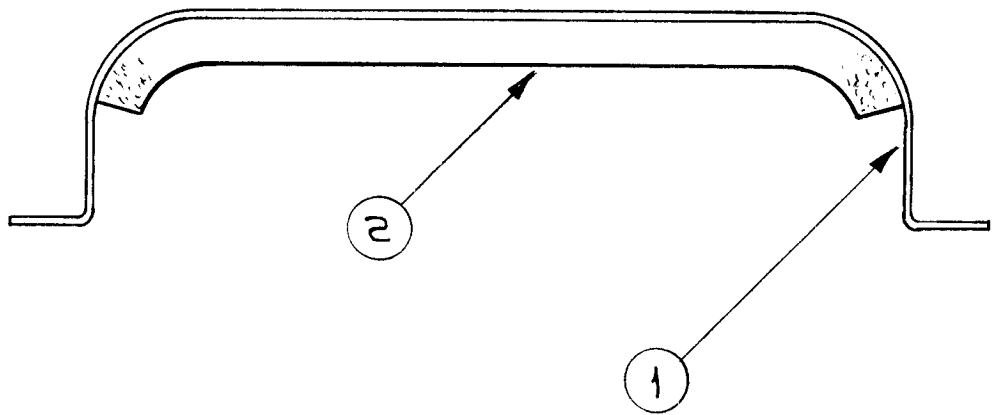
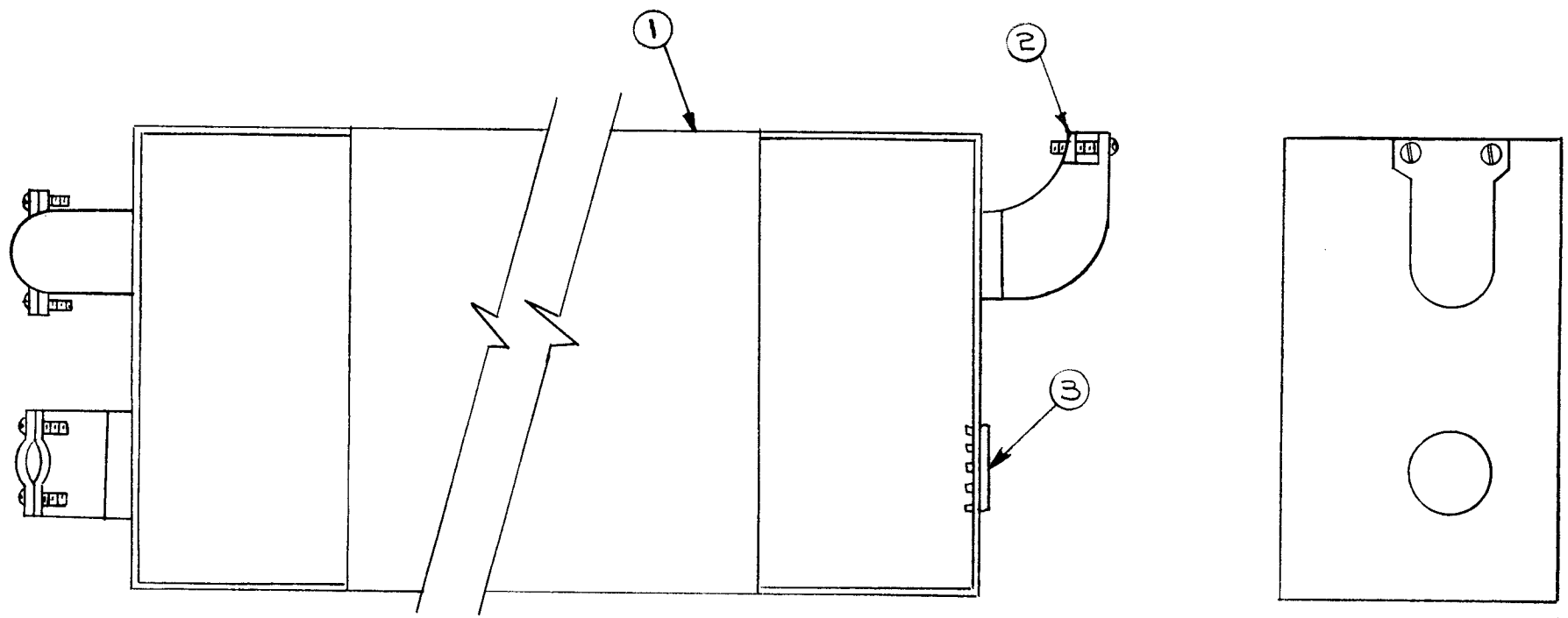


REQ. PER UNIT	USED ON			A3711	Ø
	MODEL	ASS'Y. NO.	DATE		
1	RTTD-1	A3703	12-21-64		



							X	2	TA111-2-6-4.75-6	TAPE, URETHANE			
							1	1	MS3855	RETAINER, CAPACITOR			
							REQ. ITEM		PART NO.	EATON	DESCRIPTION	SYMBOL	
Ø	ORIGINAL RELEASE FOR PRODUCTION	2.10.65	Ø	J.L.	J.C.B.		STOCK SIZE		THE TECHNICAL MATERIEL CORP. MAMARONECK, NEW YORK				
X	EXPER. RELEASE	12-21-64	X	J.L.	J.M.		MATERIAL		RETAINER ASSY, CAPACITOR				
SYM	DESCRIPTION	DATE	CH. NO.	DRAFTS	CHECKER	ENG. APP.	TYPE & TEMPER		HEAT TREAT. SPEC.	DRAWN	CHECKED	FINAL APPROVAL	
UNLESS OTHERWISE SPECIFIED DIMENSIONS ARE IN INCHES AND INCLUDE CHEMICALLY APPLIED OR PLATED FINISHES		SCALE		1:1			TYPE & TEMPER		HEAT TREAT. SPEC.	W. JORDAN	J.C.B.	RC	
DECIMALS .X ± .05 .XX ± .01 .XXX ± .005	TOLERANCES	FRACTIONS ± 1/64 ANGLES ± 0° 30'	CODE	A			FINISH & SPEC. NO.			W. JORDAN 2/8/65	J.C.B. 2/8/65	A3711	Ø

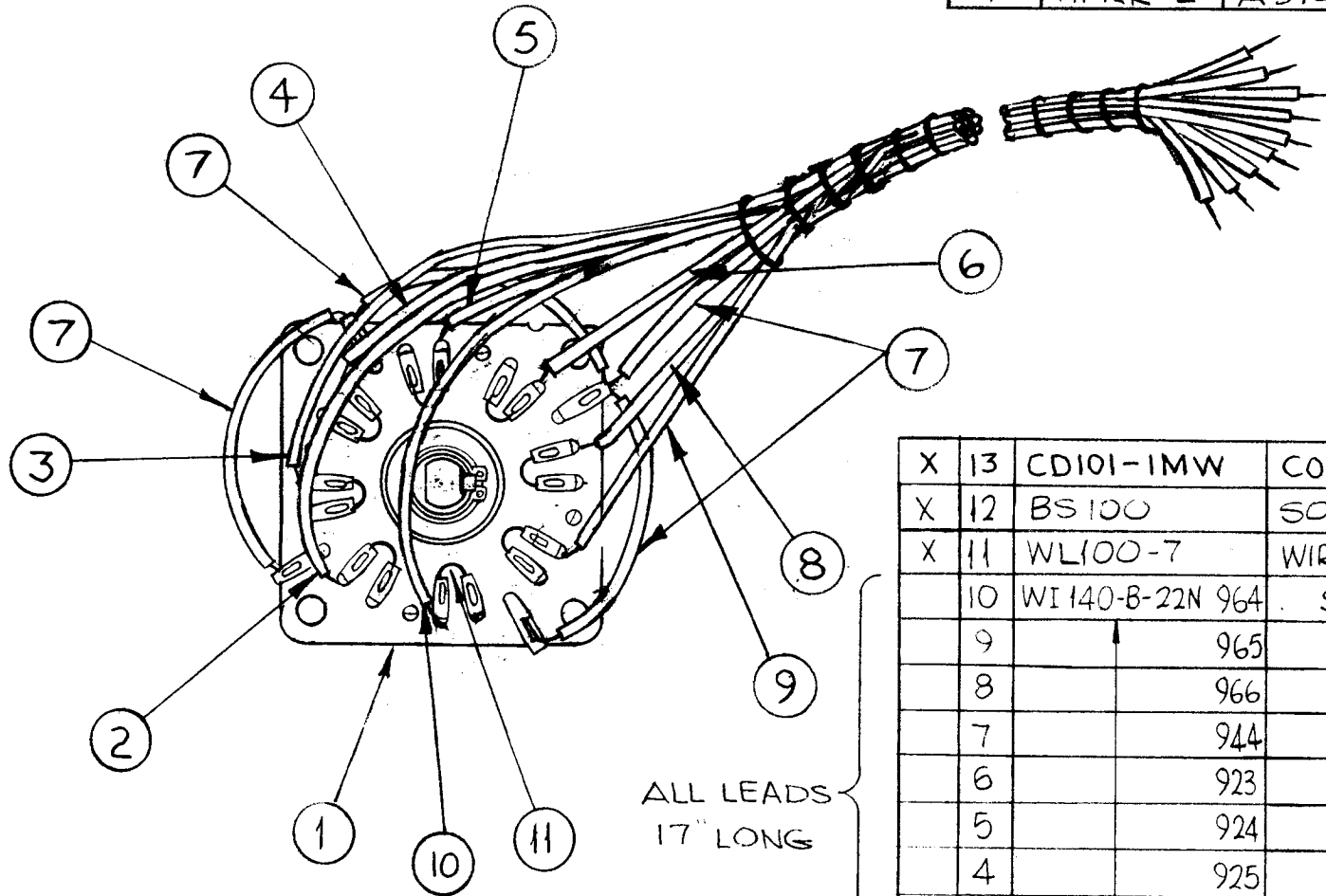
REQ. PER UNIT	USED ON			A3730 $\Phi$
	MODEL	ASSY. NO.	DATE	
	RAK-43		7-15-64	



1	3	HB101-5-N	BUTTON , PLUG	
3	2	CU110	FITTING , CONDUIT	
1	1	FI104	FILTER,RADIO INTERFERENCE	
REQ. ITEM		PART NO.	STURMER	DESCRIPTION
STOCK SIZE			THE TECHNICAL MATERIEL CORP. MAMARONECK, NEW YORK	
MATERIAL			FILTER ASSEMBLY	
TYPE & TEMPER		HEAT TREAT. SPEC.	DRAWN	CHECKED
FINISH & SPEC. NO.		ELEC. DES. APP.	MECH. DES. APP.	

○ ORIGINAL RELEASE FOR PRODUCTION	7-15-64	$\Phi$	<i>Shur</i>			
SYM	DESCRIPTION	DATE	CH. NO.	DRAFTS	CHECKER	ENG. APP.
UNLESS OTHERWISE SPECIFIED DIMENSIONS ARE IN INCHES AND INCLUDE CHEMICALLY APPLIED OR PLATED FINISHES		SCALE <i>1/16"</i>				
DECIMALS .X ± .05 .XX ± .01 .XXX ± .005	TOLERANCES	FRACTIONS ± 1/64 ANGLES ± 0° 30'	CODE A			

REQ. PER UNIT	USED ON			A3745 Ø
	MODEL	ASS'Y. NO.	DATE	
1	HFRR-2	A3746	7-17-64	



**NOTE**  
**IMPORTANT**  
LACING MUST BE AS CLOSE TO THE SWITCH AS POSSIBLE.

ALL LEADS 17" LONG

X	13	CD101-1M	CORD, NYLON, LACING		
X	12	BS100	SOLDER, TIN ALLOY		
X	11	WL100-7	WIRE, BUSS-BAR, TINNED, SZ 22		
	10	WI140-B-22N 964	51007	P1007	PIN F
	9		965		L
	8		966		J
	7		944		A
	6		923		B
	5		924		C
	4		925		D
	3		926		H
	2	WI140-B-22N963	51007	P1007	PIN E
	1	WS133	SWITCH, WAFER		51007

Ø	ORIGINAL RELEASE FOR PRODUCTION	9-22-64	Ø	9F.		
X <sub>2</sub>	WIRES SHOWN AS HARNESSSED	9-22-64		9F.		
X <sub>1</sub>	ITEM I - 51007 ADD	9/10/64		9F.		
	ITEM II WAS WI100-7 WIRE, BUSS-BAR, TINNED TITLE WAS HOMING SWITCH; NOTCHED					
X	EXPERIMENTAL RELEASE	7-17-64	Ø	SRG		
SYM	DESCRIPTION	DATE	CH. NO.	DRAFTS	CHECKER	ENG. APP.
UNLESS OTHERWISE SPECIFIED DIMENSIONS ARE IN INCHES AND INCLUDE CHEMICALLY APPLIED OR PLATED FINISHES		SCALE	1:1			
DECIMALS .X ± .05 .XX ± .01 .XXX ± .005	TOLERANCES	FRACTIONS ± 1/64 ANGLES ± 0° 30'	CODE	A		

REQ. ITEM	PART NO.	FROM	DESCRIPTION	TO	SYMBOL
			THE TECHNICAL MATERIEL CORP. J. ANGER MAMARONECK, NEW YORK		
			SWITCH, WIRING ASS'Y		
		SRG	@	RAC	
TYPE & TEMPER	HEAT TREAT. SPEC.	DRAWN	CHECKED	FINAL APPROVAL	
				A3745 Ø	
FINISH & SPEC. NO.		ELEC. DES. APP.	MECH. DES. APP.		

SYMBOL(S)	ITEM NO.	USED TO MOUNT	QTY	REQ. PER UNIT	USED ON			A3748	E
					MODEL	ASS'Y. NO.	DATE		
	1			1	BSP-6A				

AR101,102	1		
XF101(DS101 R103)	3		
XF102(DS102 R104)			
F101,102	4		
LS101,102	6		
R101,102	12		
	13	HA102-2BN	4
	14	LS101/MS395/AZ104	8
	15	HA102-2BN	4
	16	NP103-76	
W101	17		
W102	18		
S101,102	22		
	24	MS4056	4
	25	MS4056	4

2	32	MS4056	PL, MTG, CONN
2	31	FUI00-125	FUSE, QUICK ACTING, FOR 230V LINE
2	30	CA946	WIRING HARNESS, BRANCHED
X	29	BS100	SOLDER, TIN ALLOY
		DELETED	
		DELETED	
		DELETED	
4	25	SCBP0440BN2 1	SCREW, MACHINE
4	24	TE117-32	SPACER, SLEEVE
		DELETED	
2	22	SW120	SWITCH, ROTARY
2	21	CA676-5-9.00	CABLE ASSEMBLY, SP, POTENTIOMETER
2	20	CA676-4-9.00	CABLE ASSEMBLY, POWER, AMPL. TO FUSE
2	19	CA676-3-7.00	CABLE ASSEMBLY, AMPL. TO SPEAKER
1	18	CA676-2-13.00	CABLE ASSEMBLY, POWER, DC
*1	17	CA575-5	CABLE ASSEMBLY, POWER, AC
4	16	SFB0256SN3	SCREW, TAPPING, THREAD CUTTING
4	15	SCHH1032BN8	BOLT, MACHINE
8	14	SCBP0632BN 8	SCREW, MACHINE
4	13	LWS10MRN	WASHER, LOCK, SPLIT
2	12	RV4NAYSD253B	RESISTOR, VARIABLE, COMPOSITION
		DELETED	
1	10	NP103-76	PLATE, IDENTIFICATION, COMM.
1	9	LD1568/MS3942	PANEL, FRONT
2	8	MS395	GRILL, SPEAKER
4	7	MP123-3FB	KNOB
2	6	LS101	SPEAKER, PM
2	5	HA102-2BN	HANDLE
2	4	FUI00-250	FUSE, CARTRIDGE, 1/4 AMP. FOR 115V LINE
2	3	FH104-2	FUSEHOLDER
4	2	CU139-2B	FERRULE, HANDLE
2	1	AZ104	AMPLIFIER, AUDIO FREQUENCY

\*NOT SUPPLIED WHEN USED WITH MSGC-1

E	IT. 32 ADDED, ON USED TO MOUNT CHT. CA 946 DELE.	5/26/65	14,119	E	JLB	
D	MODEL WAS BSP-6 IT. (14) WAS SCBP0832BN10 IT. (1) WAS 2 REQ.	4-30-65	139,56		JLB	
C	IT. 31 ADDED, IT. 4 WAS FUI02-375, DESC. UPDATED.	3-31-65	13767		JLB	
B	B/M & USED TO MT. UPDATED	12-15-64	13026	HLA	JLB	
A	USED TO MOUNT UPDATED IT. (1) WAS JJ311-1P, IT. 26 WAS MS4015	10-26-64	12764	HLB	JLB	
Ø	ORIGINAL RELEASE FOR PRODUCTION	9-17-64		JLB		
SYM	DESCRIPTION	DATE	CH. NO.	DRAFTS	CHECKER	ENG. APP.
UNLESS OTHERWISE SPECIFIED DIMENSIONS ARE IN INCHES AND INCLUDE CHEMICALLY APPLIED OR PLATED FINISHES		SCALE				
DECIMALS .X ± .05 .XX ± .01 .XXX ± .005	TOLERANCES	FRACTIONS ± 1/64 ANGLES ± 0° 30'	CODE			

REQ. ITEM	PART NO.	STURMER	DESCRIPTION	SYMBOL
<b>THE TECHNICAL MATERIEL CORP.</b> MAMARONECK, NEW YORK				
STOCK SIZE				
FINAL ASSEMBLY, BSP-6A				
MATERIAL				
		9-15-64	L. Gabel ENG COORD 9-15-64	JLB
TYPE & TEMPER		HEAT TREAT. SPEC.	DRAWN	CHECKED
			JLB	JLB 9-17-64
FINISH & SPEC. NO.		ELEC. DES. APP.	MECH. DES. APP.	A3748
				E

SYMBOL(S)	ITEM NO.	USED TO MOUNT	QTY	REQ. PER UNIT	USED ON			A3762	Ø
					MODEL	ASS'Y. NO.	DATE		
				1	HFR-2/HFRR-2		1/5/65		

W1301	4		
	5	AX513 to AX512	1
	6	AX513 to AX512	2
	7	AX513 to AX512	1
	8	AX513 to AX512	3
	14	AX513 to AX512	1
	15	AX513 to AX512	3
	16	A3646	
	17	NP102	4
	18	AX513 to AX512	1

1	18	TE117-57	SPACER, SLV
4	17	SFBO256SN3	SCR, MACH
6	16	SCBP0832BN6	SCR, MACH
3	15	SCBP0632BN5	SCR, MACH
1	14	NTH1032BN12	NUT, PLN, HEX
1	13	SEE CHART	PLATE, IDENTIFICATION
1	12	MS3729	COVER, BOTTOM
1	11	MS3728	COVER, TOP
1	10	MP125-1	KNOB-ADJ LK
2	9	MP123-10NB	KNOB-BNDSW & TUNING
3	8	LWI06MRN	WASHER, LOCK, EXTERNAL
1	7	LWE10MRN	WASHER, LOCK, EXTERNAL
2	6	FW100-19TS	WASHER, FLAT
1	5	FW10HBN	WASHER, FLAT
1	4	CA480-84-13	CABLE ASSEMBLY, RF
1	3	SEE CHART	TUNER/GEAR ASSEMBLY
1	2	AX512	CHASSIS ASSEMBLY, MAIN
1	1	A3646	PANEL ASSEMBLY, FRONT

TMC NO.	USED ON	ITEM 3	ITEM 14	UNIT TYPE
A3762-1	HFR-2	AX513-1	NP102-40	MANUAL
A3762-2	HFRR-2	AX513-2	NP102-73	AUTOMATIC

REQ.	ITEM	PART NO.	DESCRIPTION	SYMBOL
<b>THE TECHNICAL MATERIEL CORP.</b>				
MAMARONECK. NEW YORK				
HFR FINAL ASSEMBLY				
STOCK SIZE				
MATERIAL				
UNLESS OTHERWISE SPECIFIED DIMENSIONS ARE IN INCHES AND INCLUDE CHEMICALLY APPLIED OR PLATED FINISHES		SCALE	2-25-65 ENG COORD 2-25-65	
DECIMALS .X ± .05 .XX ± .01 .XXX ± .005		FRACTIONS ± 1/64 ANGLES ± 0° 30'	TYPE & TEMPER	HEAT TREAT. SPEC.
TOLERANCES		CODE	DRAWN	CHECKED
			FINAL APPROVAL	
			A3762	
		FINISH & SPEC. NO.	ELEC. DES. APP.	MECH. DES. APP.