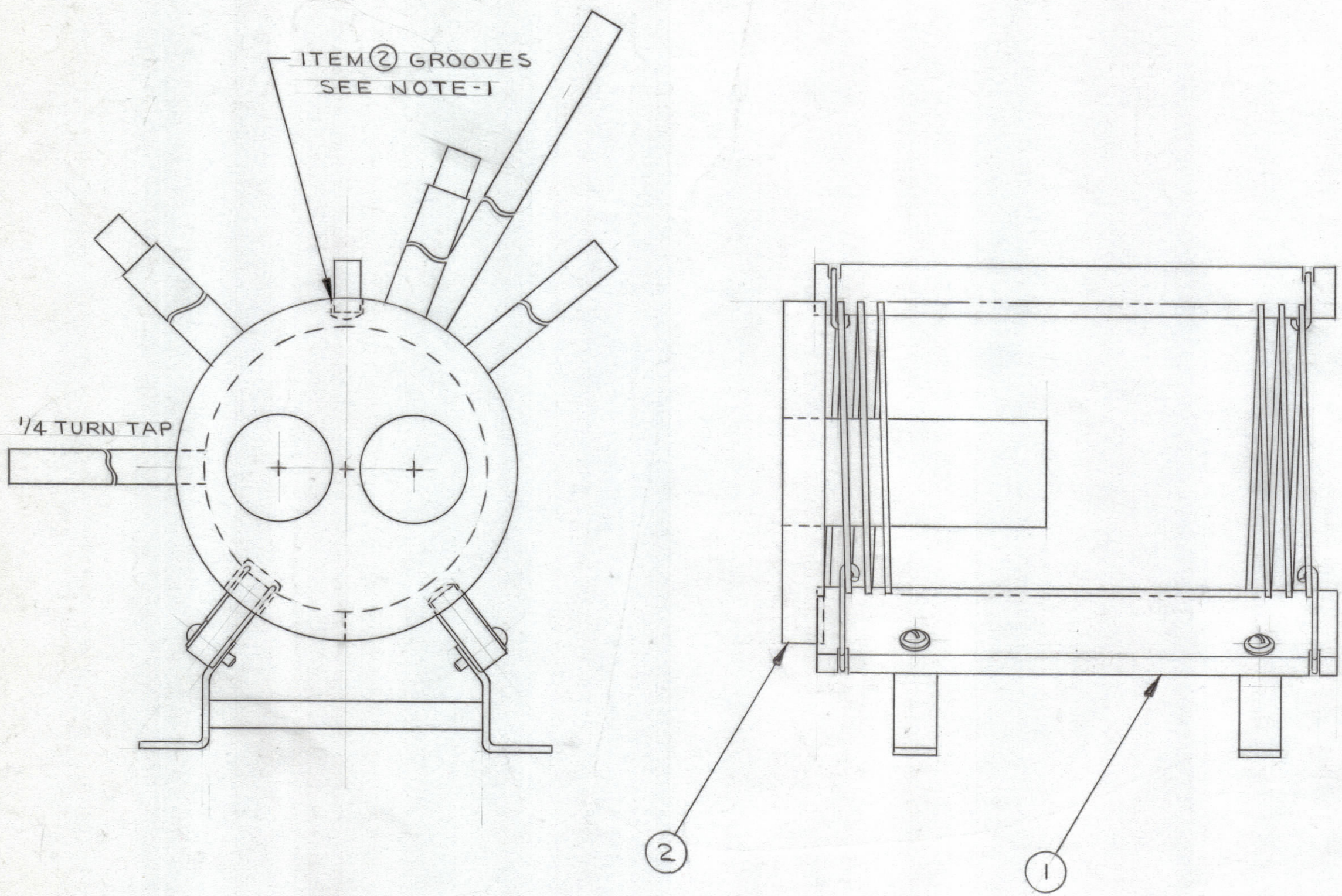


REVISIONS						
ZONE	SYM	DESCRIPTION	DATE	E.M.N. NO.	DRAFT	CHKD APPD
	X	EXPERIMENTAL RELEASE	5/13/64		JL	
	O	ORIGINAL RELEASE FOR PRODUCTION	7.9.64		MB	



NOTES:-  
 1- ASSEMBLE ITEM 2 TO ITEM 1 BY PLACING EPOXY ITEM 3 IN GROOVES OF ITEM 2 & PRESSING IN PLACE AS SHOWN.

A 36500

REQ'D.	ITEM	PART NUMBER	DESCRIPTION	SYMBOL
X	3	GL125	EPOXY, ADHESIVE	
1	2	A 3649	CORE SUPPORT ASSEMBLY	
1	1	CL174	TRANSFORMER, R.F., FIXED	

M. GELLMAN LIST OF MATERIAL

MATERIAL	THE TECHNICAL MATERIEL CORP. MAMARONECK, NEW YORK		
FINISH	TITLE CL 340 ASSEMBLY		

UNLESS OTHERWISE SPECIFIED DIMENSIONS ARE IN INCHES AND INCLUDE CHEMICALLY APPLIED OR PLATED FINISHES	DRAWN J. LESHINSKI	DATE 4/3/64	FINAL APPROVAL RJP	DATE
DECIMALS .X ± .05 .XX ± .01 .XXX ± .005	TOLERANCES	FRACTIONS ± 1/64 ANGLES ± 0° 30'	ELECT. DES. MB	DATE 7-8-64
			MECH. DES.	DATE 7-8-64

THE CONTENTS OF THIS DRAWING ARE THE EXCLUSIVE PROPERTY OF THE TECHNICAL MATERIEL CORP. ITS UNAUTHORIZED USE OR REPRODUCTION IN WHOLE OR IN PART IS STRICTLY FORBIDDEN.

SCALE 1:1

QTY./UNIT MODEL USED ON ASS'Y. NO. CODE

NOTES

REPROVAL NO. 440H 16168

H  
G  
F  
E  
D  
C  
B  
A

H  
G  
F  
E  
D  
C  
B  
A