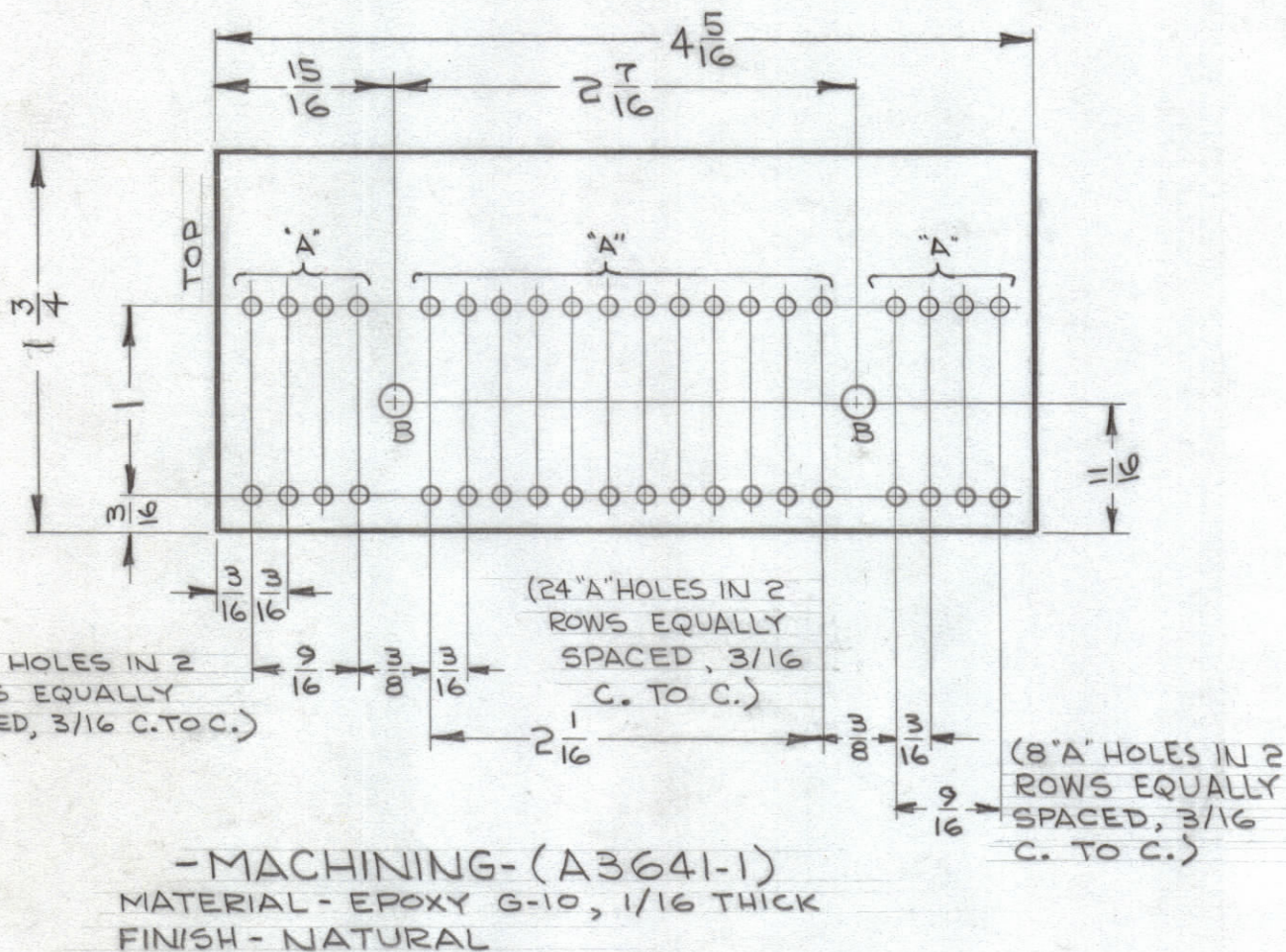


HOLE	DESCRIPTION	REQ.
A	.078 DIA	40
B	5/32 DIA	2

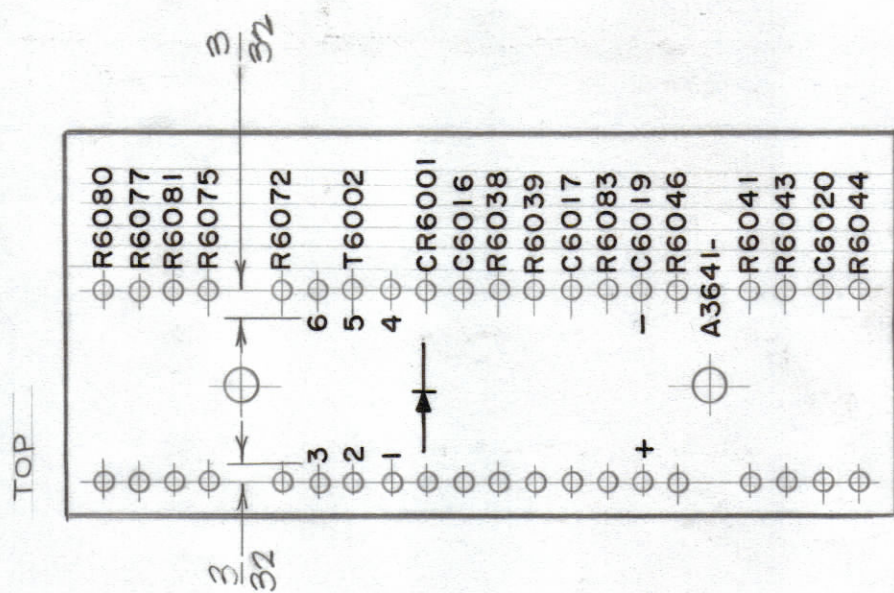
MARKING PROCESS: AS PER TMC SPECIFICATION S-727.
 LETTERING: 3/32 HIGH BLACK GOTHIC, LOCATED AS SHOWN.

FUNGUS PROOFING PER TMC SPECIFICATION S-113, AFTER MARKING PROCESS.
 MARK TMC PART NO. WITH LATEST REVISION LETTER, 3/32 HIGH BLACK GOTHIC.

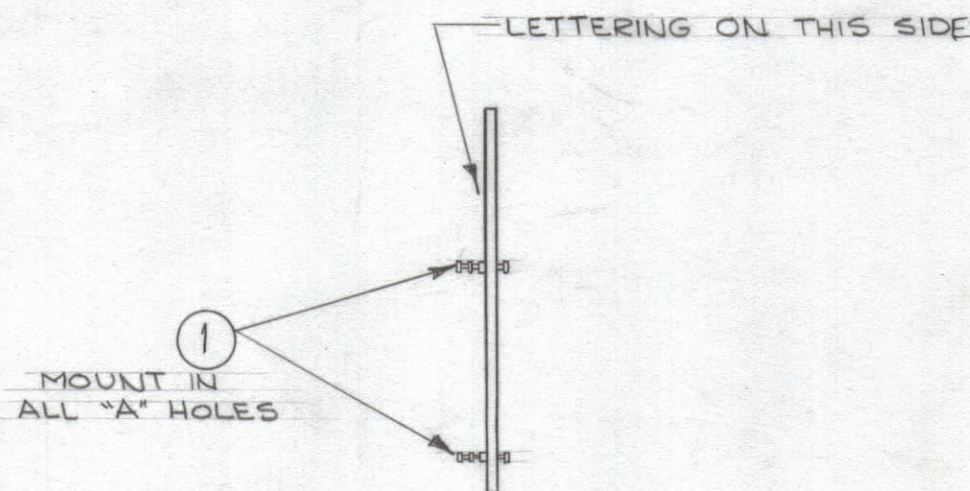
REVISIONS							
ZONE	SYM	DESCRIPTION	DATE	E.M.N. NO.	DRAFT	CHKD	APPD
X		EXPER RELEASE	5-13-64	1			
X1		ITEMS 1 THRU 22 ADDED	7-7-64	2			
X2		TOL. CLARIFIED	9-29-65	X2			
X3		ITEMS 23 THRU 26, DETAIL 3/32 TO A3641-2 ADDED	10-26-65	X3			
		ORIGINAL RELEASE FOR PRODUCTION	11-3-65				
A		DELE. IT 2, 17 & 18. CHGD QTY IT 6. TO 1 DELE R6038. ADD IT. 27. CHGD 2" DIM TO 1-3/4"	11/18/66	17235	RME		



- MACHINING - (A3641-1)
 MATERIAL - EPOXY G-10, 1/16 THICK
 FINISH - NATURAL

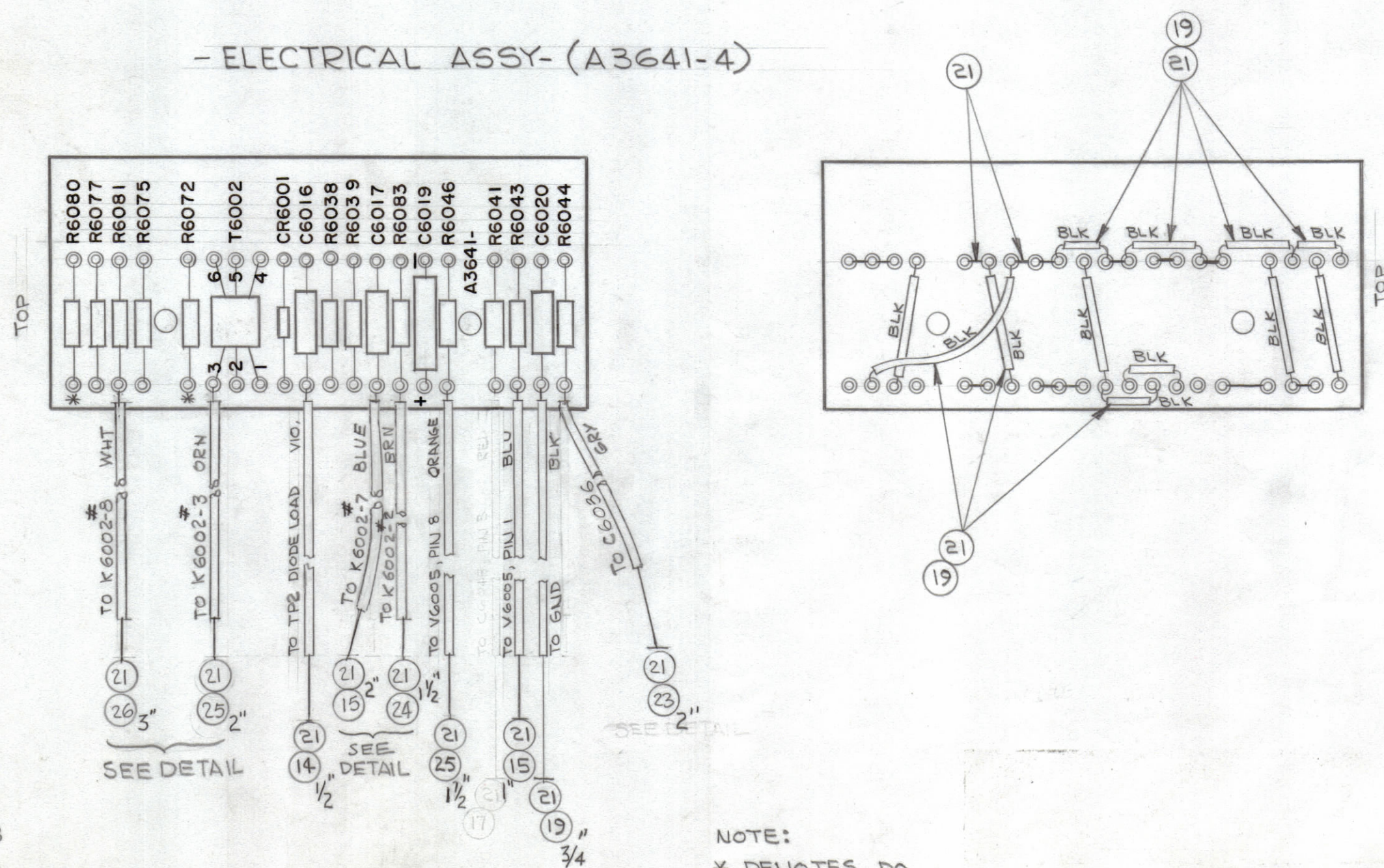


- MARKING - (A3641-2)



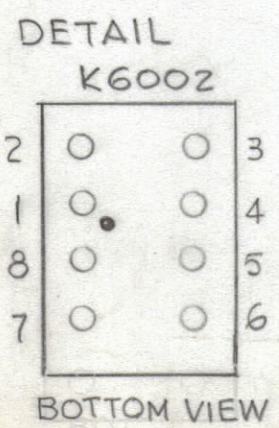
- SUB ASSY - (A3641-3)

- ELECTRICAL ASSY - (A3641-4)



REQ'D	ITEM	PART NUMBER	DESCRIPTION	SYMBOL
2	27	RC20GF 472 J	RESISTOR, FIXED, COMPOSITION	R6038, 4039
X	26	PX104-0-034	INSULATION, SLEEVING WHT	
X	25	↑ -8- ↓	↑ ↑	ORN
X	24	↑ -5- ↓	↑ ↑	BRN
X	23	PX104-7-034	INSULATION, SLEEVING GRY	
X	22	BS100	SOLDER, SOFT	
X	21	WL100-6	WIRE, BUSS (#20)	
2	20	RC20GF103J	RESISTOR, FIXED, COMPOSITION	
X	19	PX104-1-034	INSULATION, SLEEVING BLK	
	18	DELETED		
	17	DELETED		
X	16	PX104-4-034	INSULATION SLEEVING GRN	
X	15	PX104-6-034	INSULATION SLEEVING BLU	
X	14	PX104-9-034	INSULATION SLEEVING VIO	VIO
1	13	TF228K15	TRANSFORMER, PULSE	T6002
1	12	IN34A	DIODE, SILICON	CR6001
1	11	CM20F821J03	CAPACITOR, FIXED, MICA	C6016
1	10	CM20F561J03	↑ ↑ ↑	C6017
1	9	CM15F471J03	↑ ↑ ↑	C6020
1	8	CE107-1	CAPACITOR, ELECTROLYTIC	C6019
1	7	RC20GF560J	RESISTOR, FIXED, COMPOSITION	R6083
1	6	↑ 473J ↓	↑ ↑ ↑	R6044
3	5	↑ 470J ↓	↑ ↑ ↑	R6072,
1	4	↑ 391J ↓	↑ ↑ ↑	R6080, R1
2	3	RC20GF331J	RESISTOR, FIXED, COMPOSITION	R6046
	2	DELETED	RESISTOR, FIXED, MICA	R6075
	1	TE168-4-B	TERMINAL, MINIATURE	R6077

O. POSE		LIST OF MATERIAL	
MATERIAL	SEE MACHINING	THE TECHNICAL MATERIEL CORP. MAMARONECK, NEW YORK	
FINISH	SEE MACHINING	TERMINAL BOARD ASSY (CHAN. "B" DETECTOR)	
UNLESS OTHERWISE SPECIFIED DIMENSIONS ARE IN INCHES AND INCLUDE CHEMICALLY APPLIED OR PLATED FINISHES	DRAWN G. Sancer CHECKED RJS	DATE 5-13-64 11/2/65	FINAL APPROVAL X2 11/3/65
DECIMALS .XX ± .01 .XXX ± .005	TOLERANCES ± 1/64 ANGLES ± 0° 30'	ELECT. DES. RJS	DATE 11/3/65
THE CONTENTS OF THIS DRAWING ARE THE EXCLUSIVE PROPERTY OF THE TECHNICAL MATERIEL CORP. ITS UNAUTHORIZED USE OR REPRODUCTION IN WHOLE OR IN PART IS STRICTLY FORBIDDEN.		MECH. DES. RJS	DATE 11/3/65
NOTES		A3641	A
SCALE 1:1		SHEET	REV. LTR.



NOTE:
 * DENOTES DO NOT SOLDER