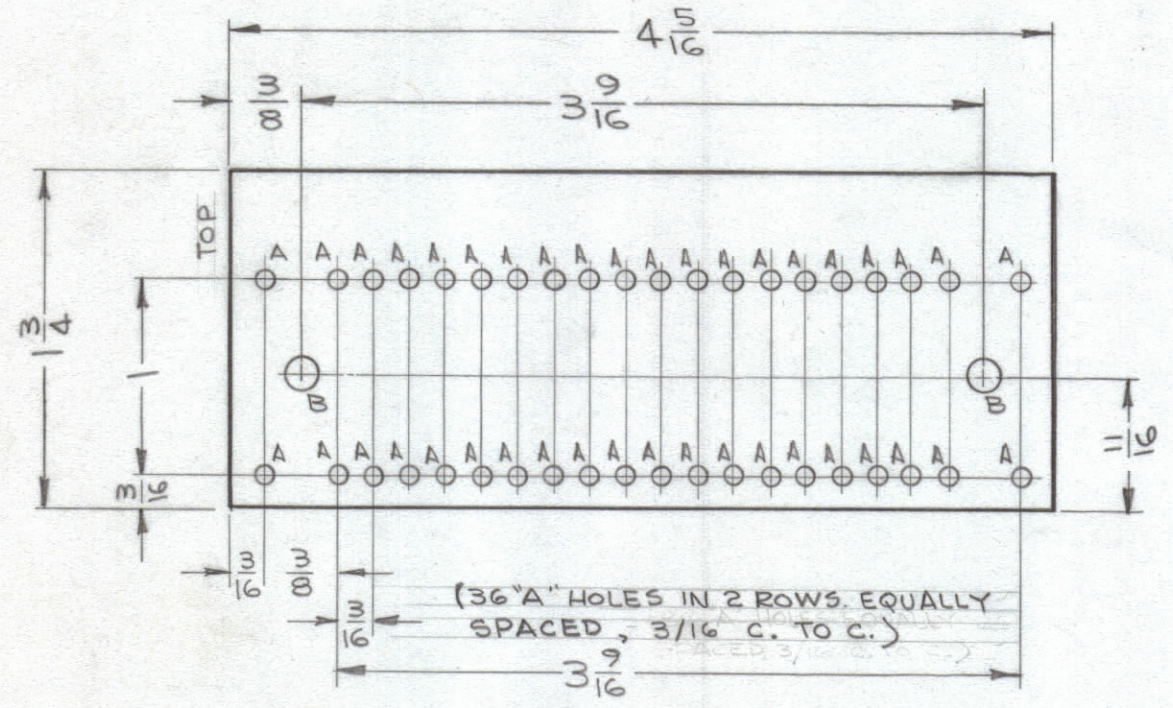


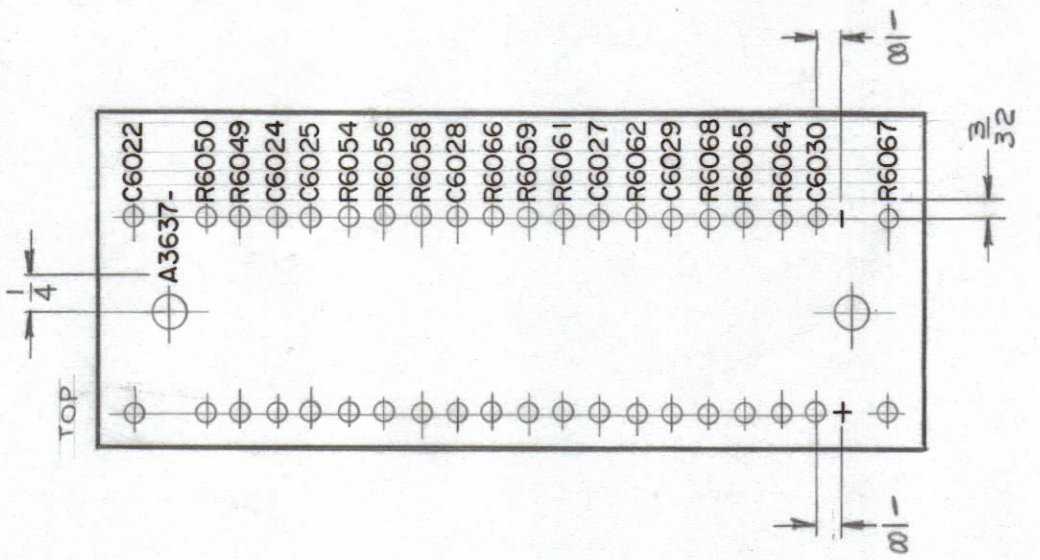
LEGEND		
HOLE	DESCRIPTION	REQ
A	.078 DIA	40
B	5/32 DIA	2

UNLESS OTHERWISE SPECIFIED:
 MARKING PROCESS: AS PER TMC SPECIFICATION S-727.
 LETTERING: 3/32 HIGH BLACK GOTHIC, LOCATED AS SHOWN.
 FUNGUS PROOFING PER TMC SPECIFICATION S-113, AFTER MARKING PROCESS.
 MARK TMC PART NO. WITH LATEST REVISION LETTER, 3/32 HIGH BLACK GOTHIC.

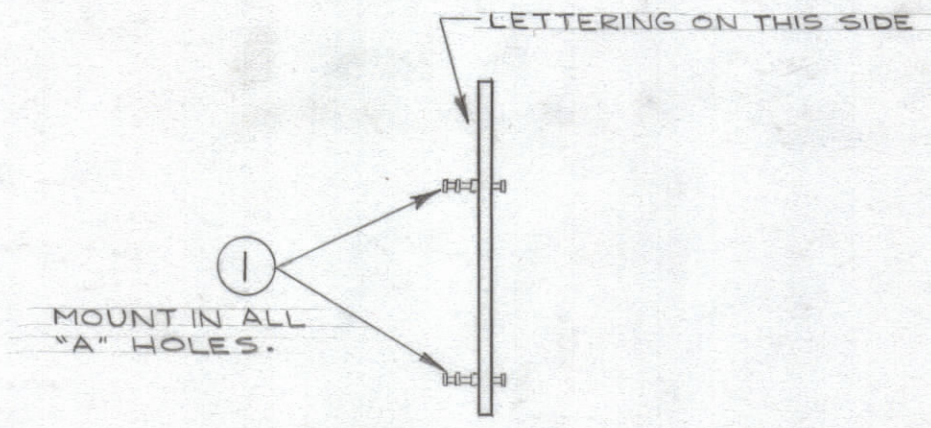
REVISIONS						
ZONE	SYM	DESCRIPTION	DATE	E.M.N. NO.	DRAFT	CHKD
	X	EXPER RELEASE	5-7-64	1		
B2	X1	ITEM 8 WAS RC20GF331K; MATERIAL WAS XXXP PHENOLIC	5-12-64	2		
	X2	TOL. CLARIFIED	8/26/65	X2		
	X3	ITEMS 17 & 14 FOR K6002-4 ADDED	10-27-65	X3		
	Ø	ORIGINAL RELEASE FOR PRODUCTION	11-3-65	Ø		
A		IT 19. ADDED. DELE. V6009 LEAD AND CALLOUT ADD LEAD DIMS. CHGD GRN TO GRN. V6008 & V6007	11-17-66	17255	RME	



- MACHINING - (A3637-1)
 MATERIAL - EPOXY 16-10, 1/16 THICK
 FINISH - NATURAL

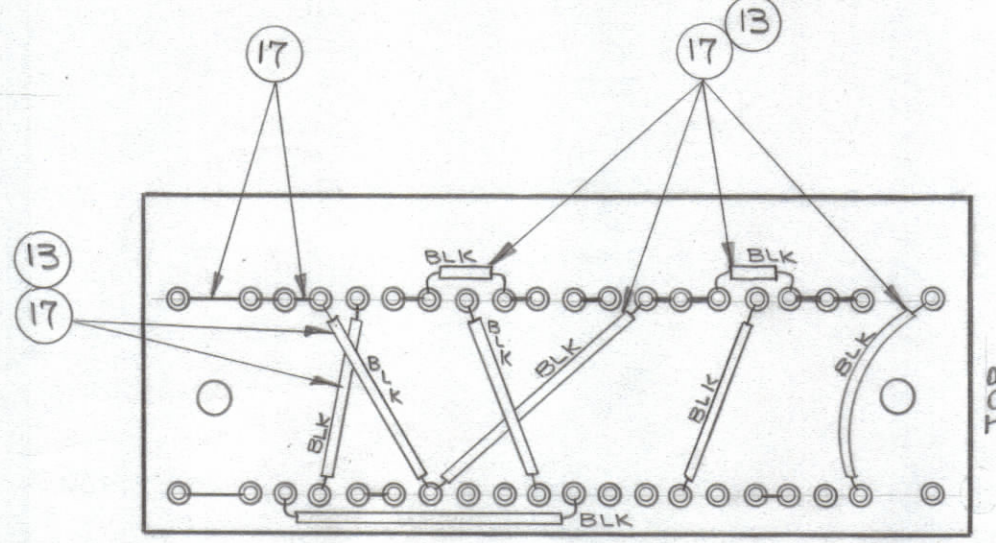
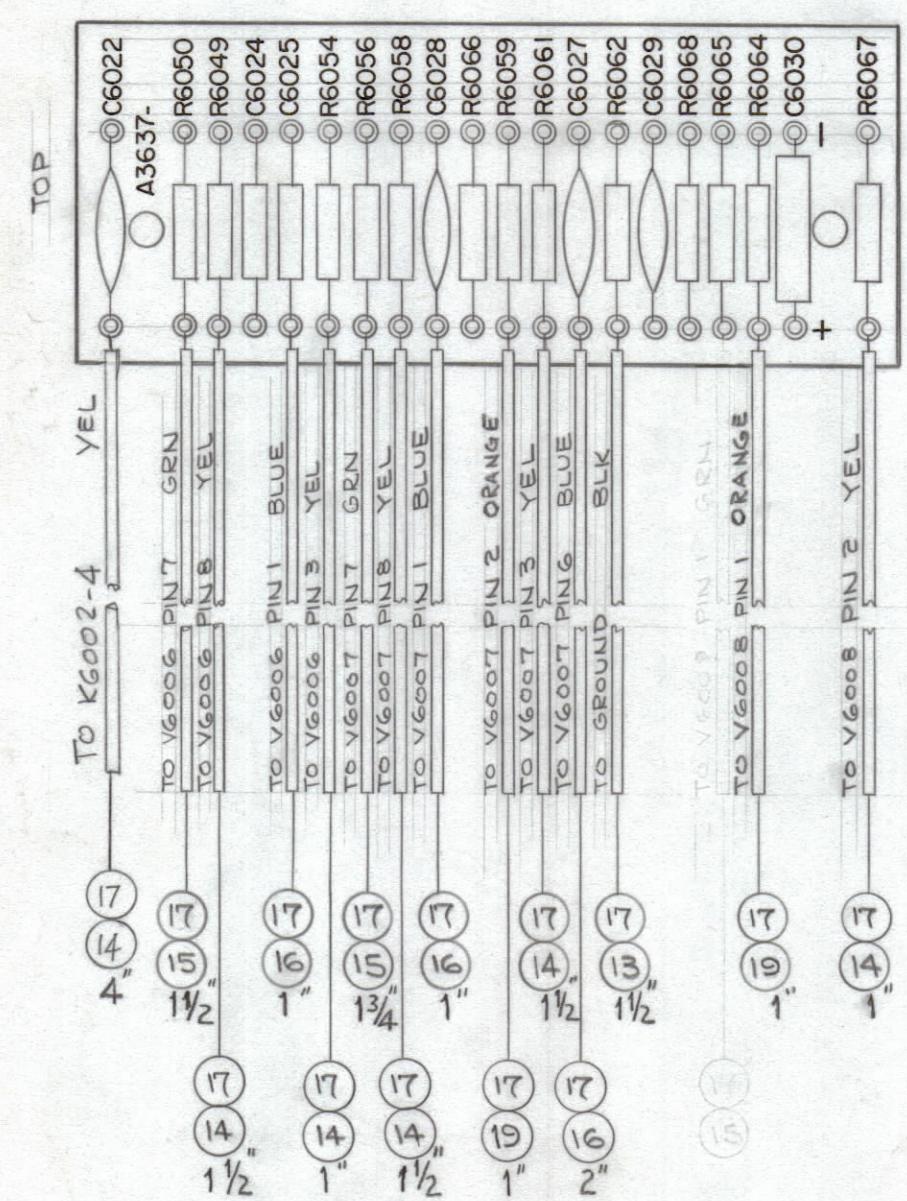


- MARKING - (A3637-2)



- SUB ASSY - (A3637-3)

- ELECTRICAL ASSY (A3637-4)



- R6050, 6056, 6059
- R6049, 6054, 6058
- C6027, 6028, 6029

NOTE:
 ALL SLEEVING TO BE 1/2" SHORTER THAN BUSS WIRE ON COMPONENT SIDE OF BOARD.

REQ'D	ITEM	PART NUMBER	DESCRIPTION	SYMBOL
X	19	PX104-8-034	SLEEVING, INSULATION	
X	18	BS100	SOLDER, SOFT	
X	17	WL100-6	WIRE, BUSS (#20)	
	16	PX104-6-034	SLEEVING, INSULATION	
	15	- 4 -		
	14	- 2 -		
	13	PX104-1-034	SLEEVING, INSULATION	
2	12	RC20GF474J	RESISTOR, FIXED, COMPOSITION	R6064, R6065, R6066, R6068
2	11	470J		
1	10	393J		R6062
1	9	RC20GF392J		R6061
1	8	RC32GF331J		R6067
3	7	RC20GF105J		
3	6	RC20GF102J	RESISTOR, FIXED, COMPOSITION	
1	5	CM100-9	CAPACITOR, FIXED, MICA	C6024
2	4	CC100-37	CAPACITOR, FIXED, CERAMIC DISC	C6022, C6025
3	3	CC100-24	CAPACITOR, FIXED, CERAMIC DISC	
1	2	CE107-1	CAPACITOR, ELECTROLYTIC	C6030
40	1	TE168-4-B	TERMINAL, MINIATURE	A

O. POSE		LIST OF MATERIAL	
SEE MACHINING		THE TECHNICAL MATERIEL CORP. MAMARONECK, NEW YORK	
SEE MACHINING		TERMINAL BOARD ASSY (CHAN "B" AUDIO AMP)	
DRAWN G. Sencen	DATE 5-7-64	FINAL APPROVAL JSD	DATE 11/3/65
CHECKED QCB	DATE 11/2/65		
ELECT. DES. JSD	DATE 11/3/65	A3637	
MECH. DES. JSD	DATE 11/3/65	SHEET	REV. LTR.

1	SBS-7	A2891
QTY./UNIT	MODEL USED ON	ASS'Y. NO.
SCALE 1:1	CODE A	

THE CONTENTS OF THIS DRAWING ARE THE EXCLUSIVE PROPERTY OF THE TECHNICAL MATERIEL CORP. ITS UNAUTHORIZED USE OR REPRODUCTION IN WHOLE OR IN PART IS STRICTLY FORBIDDEN.

NOTES