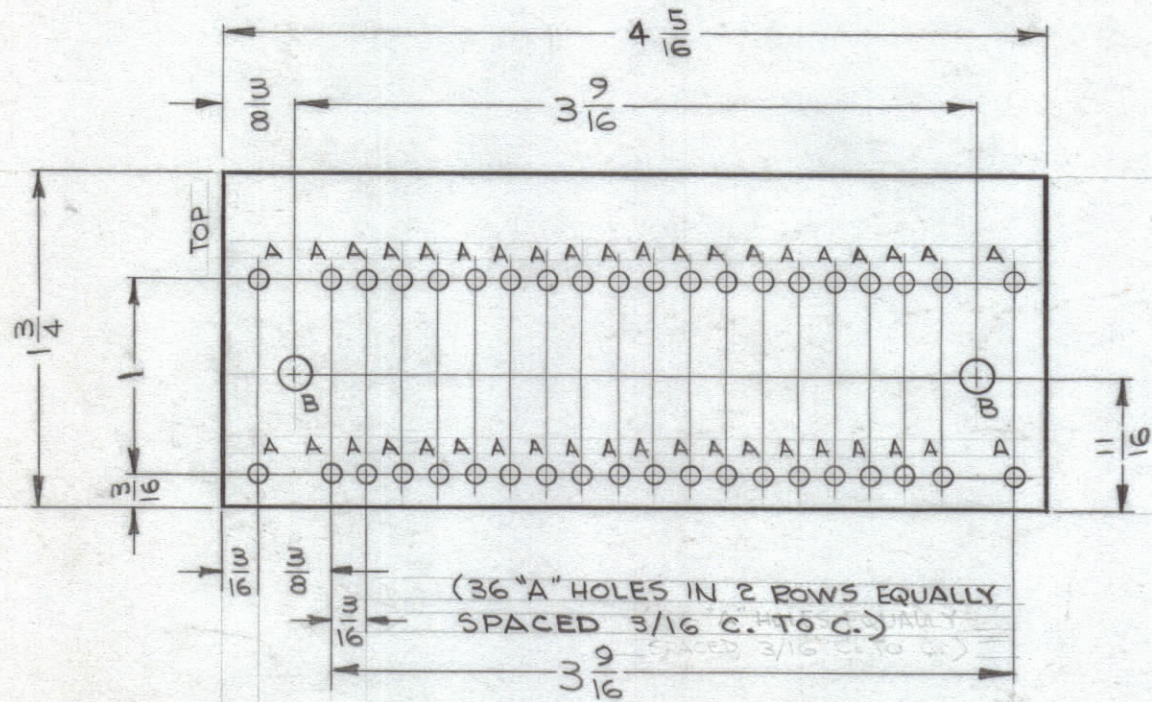


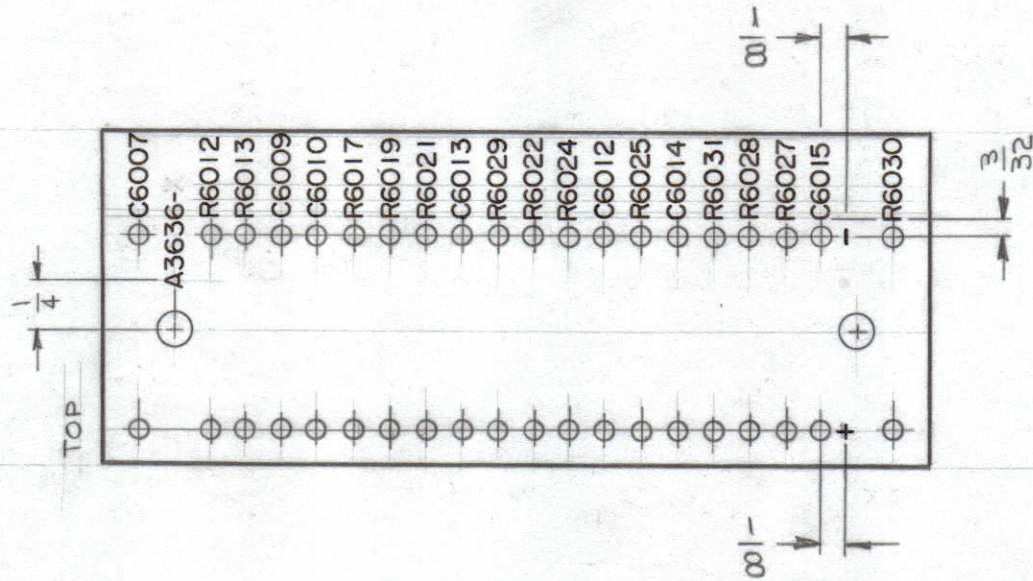
LEGEND		
HOLE	DESCRIPTION	REQ.
A	.078 DIA.	40
B	5/32 DIA.	2

UNLESS OTHERWISE SPECIFIED:
 MARKING PROCESS: AS PER TMC SPECIFICATION S-727.
 LETTERING: 3/32 HIGH BLACK GOTHIC, LOCATED AS SHOWN.
 FUNGUS PROOFING PER TMC SPECIFICATION S-113, AFTER MARKING PROCESS.
 MARK TMC PART NO. WITH LATEST REVISION LETTER, 3/32 HIGH BLACK GOTHIC.

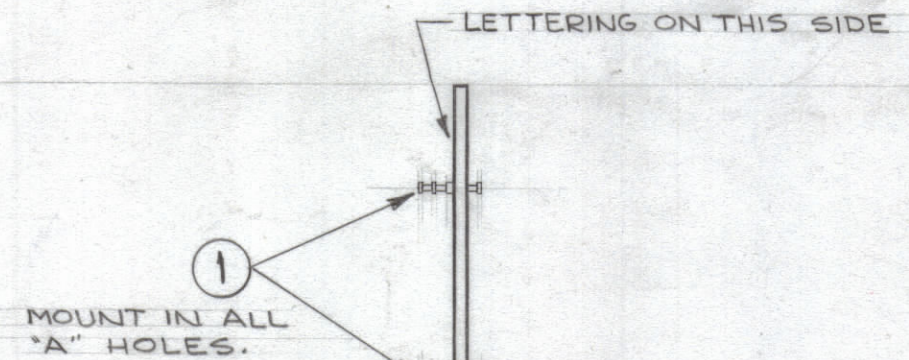
REVISIONS						
ZONE	SYM	DESCRIPTION	DATE	E.M.N. NO.	DRAFT	CHKD
	X	EXPER. RELEASE	5-6-64	1	<i>[Signature]</i>	
C2	X1	ITEM 8 WAS RC20GF331K; MAT'L WAS XXXP PHENOLIC	5-12-64	2	<i>[Signature]</i>	<i>[Signature]</i>
	X2	ITEM 5 WAS EM 20 C132K, TEL. CLARIFIED	9/20/65	X2	<i>[Signature]</i>	<i>[Signature]</i>
	X3	ITEM 17 £14 FOR V6001-4 ADDED	10-27-65	X3	G.D.L.	<i>[Signature]</i>
	Ø	ORIGINAL RELEASE FOR PRODUCTION	11-3-65		G.D.L.	
A		ADDED IT 19. ADDED LEAD DIMS. DELETED V6004 LEAD. CHG'D GRN TO ORN. V6002 & V6003	11-17-66	17255	RME	<i>[Signature]</i>



- MACHINING - (A3636-1)
 MATERIAL - EPOXY G-10, 1/16 THICK
 FINISH - NATURAL

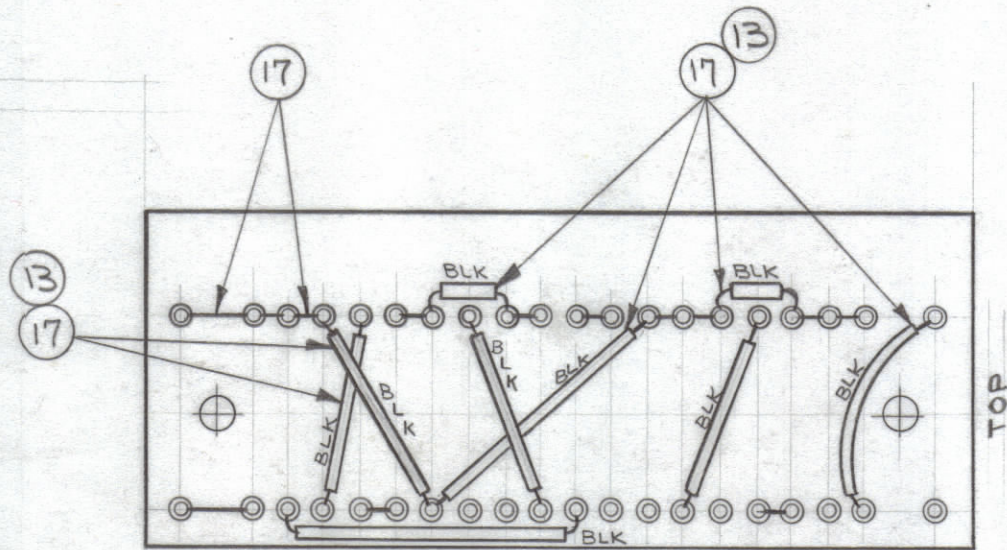
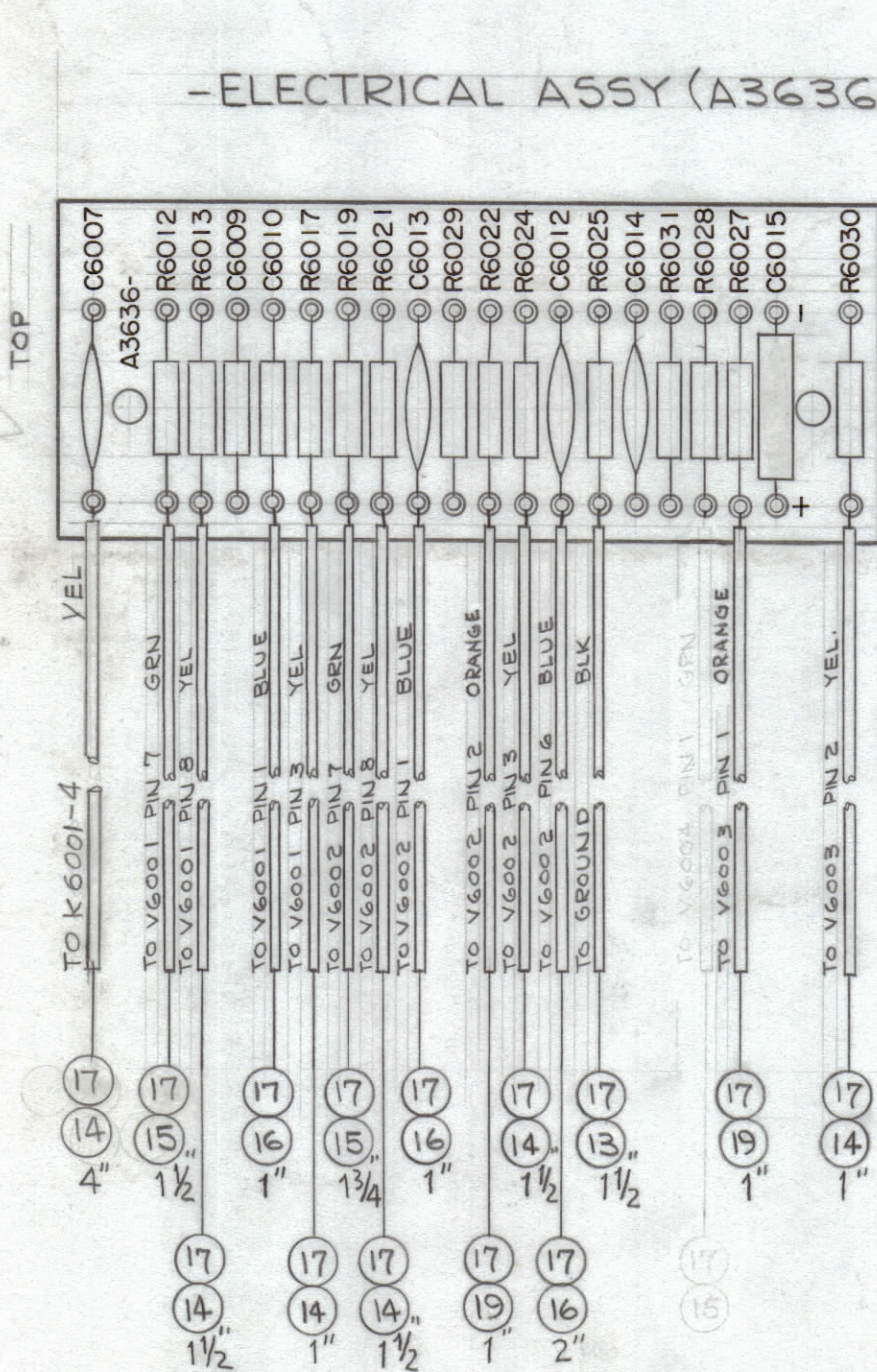


- MARKING - (A3636-2)



SUB ASSY (A3636-3)

- ELECTRICAL ASSY (A3636-4)



R6012, 6019, 6022

R6013, 6017, 6021

C6012, 6013, 6014

REQ'D.	ITEM	PART NUMBER	DESCRIPTION	SYMBOL
X	15	PX 104-8-034	SLEEVING, INSULATION	
X	18	BS100	SOLDER, SOFT	
X	17	WL100-6	WIRE, BUSS (#20)	
	16	PX104-6-034	SLEEVING, INSULATION	
	15	↑ -4- ↑		
	14	↓ -2- ↓		
	13	PX104-1-034	SLEEVING, INSULATION	
2	12	RC20GF474J	RESISTOR, FIXED, COMPOSITION	R6027 R6028 R6029 R6031
2	11	↑ 470J		
1	10	↓ 393J		R6025
1	9	RC20GF392J		R6024
1	8	RC326F331J		R6030
3	7	RC20GF105J		
3	6	RC20GF102J	RESISTOR, FIXED, COMPOSITION	
1	5	CM100-9	CAPACITOR, FIXED, MICA	C6009
2	4	CC100-37	CAPACITOR, FIXED, CERAMIC DISC	C6007 C6010
3	3	CC100-24	CAPACITOR, FIXED, CERAMIC DISC	
1	2	CE107-1	CAPACITOR, ELECTROLYTIC	C6015
40	1	TE168-4-B	TERMINAL, MINIATURE	A

LIST OF MATERIAL				
MATERIAL		THE TECHNICAL MATERIEL CORP. MAMARONECK, NEW YORK		
FINISH		TITLE		
SEE MACHINING		TERMINAL BOARD ASSY (CHAN "A" AUDIO AMP)		
SEE MACHINING		DRAWN: <i>[Signature]</i> DATE: 5-6-64		
		CHECKED: <i>[Signature]</i> DATE: 11/2/65		
		ELECT. DES. DATE: 11/3/65		
		MECH. DES. DATE: 11/3/65		
		SHEET: 1		
		REV. LTR. A		

NOTE:
 ALL SLEEVING TO BE 1/2" SHORTER THAN BUSS WIRE ON COMPONENT SIDE OF BOARD.

Q'TY./UNIT	MODEL USED ON	ASS'Y. NO.
SCALE: 1:1	CODE: A	

THE CONTENTS OF THIS DRAWING ARE THE EXCLUSIVE PROPERTY OF THE TECHNICAL MATERIEL CORP. ITS UNAUTHORIZED USE OR REPRODUCTION IN WHOLE OR IN PART IS STRICTLY FORBIDDEN.

NOTES