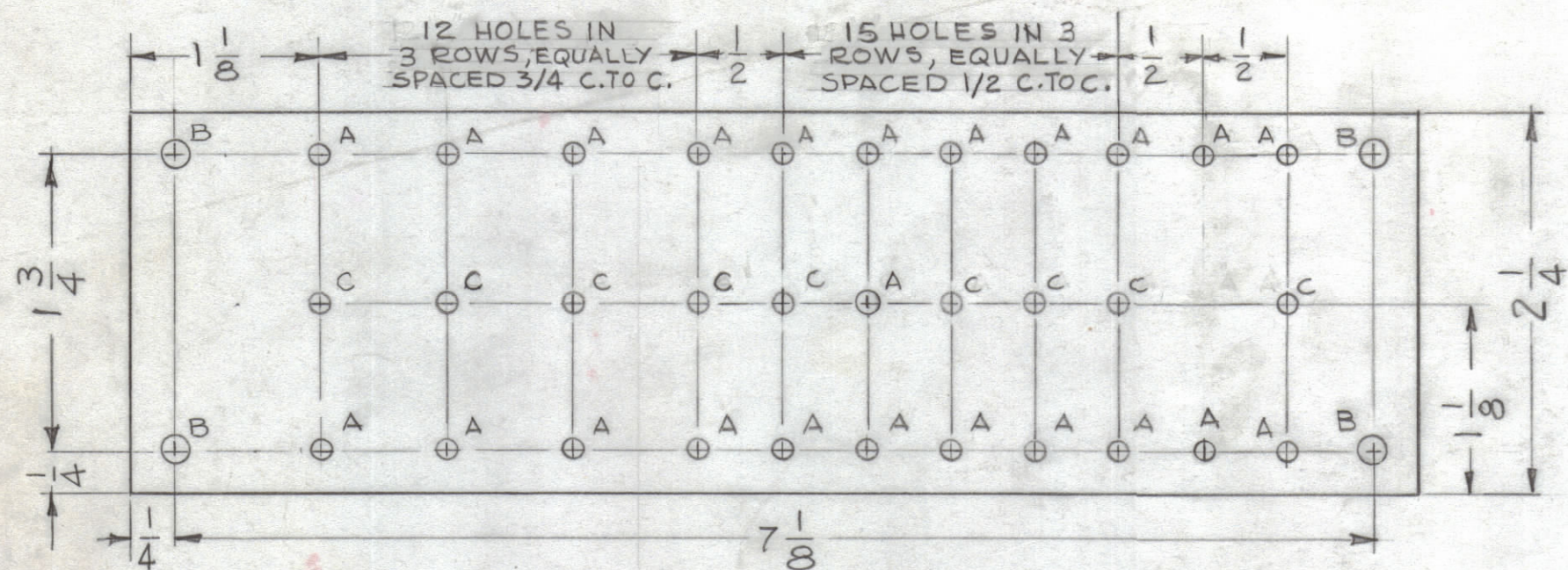
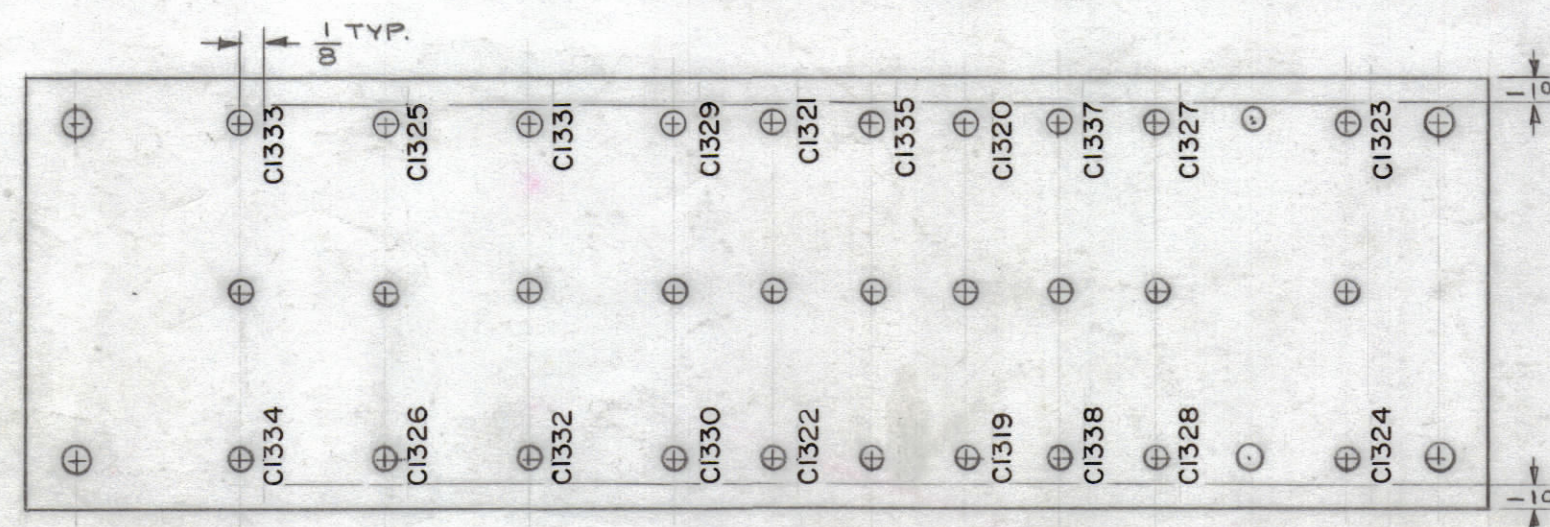
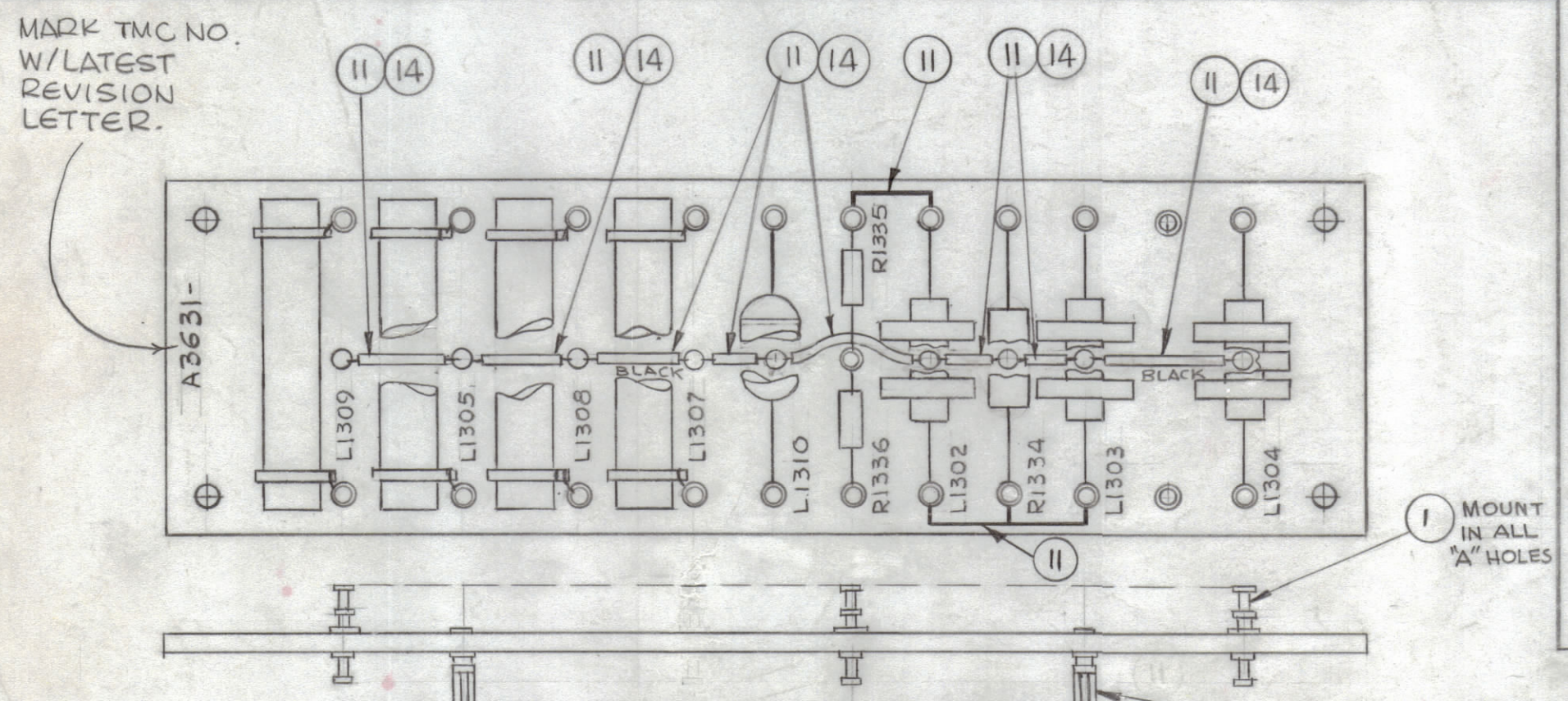
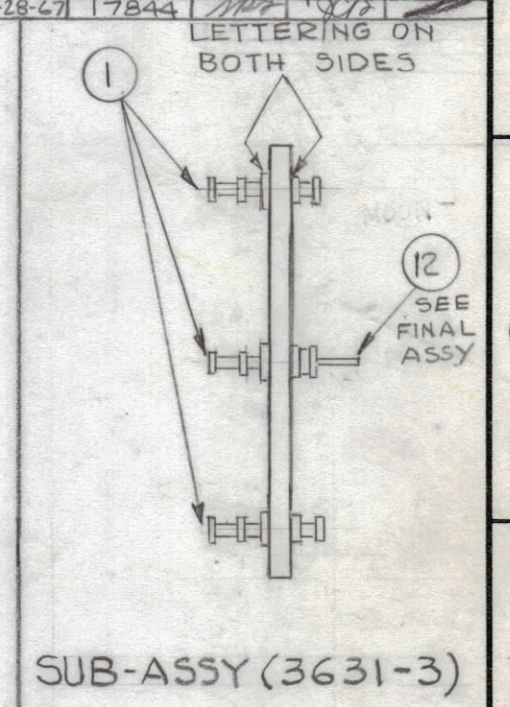
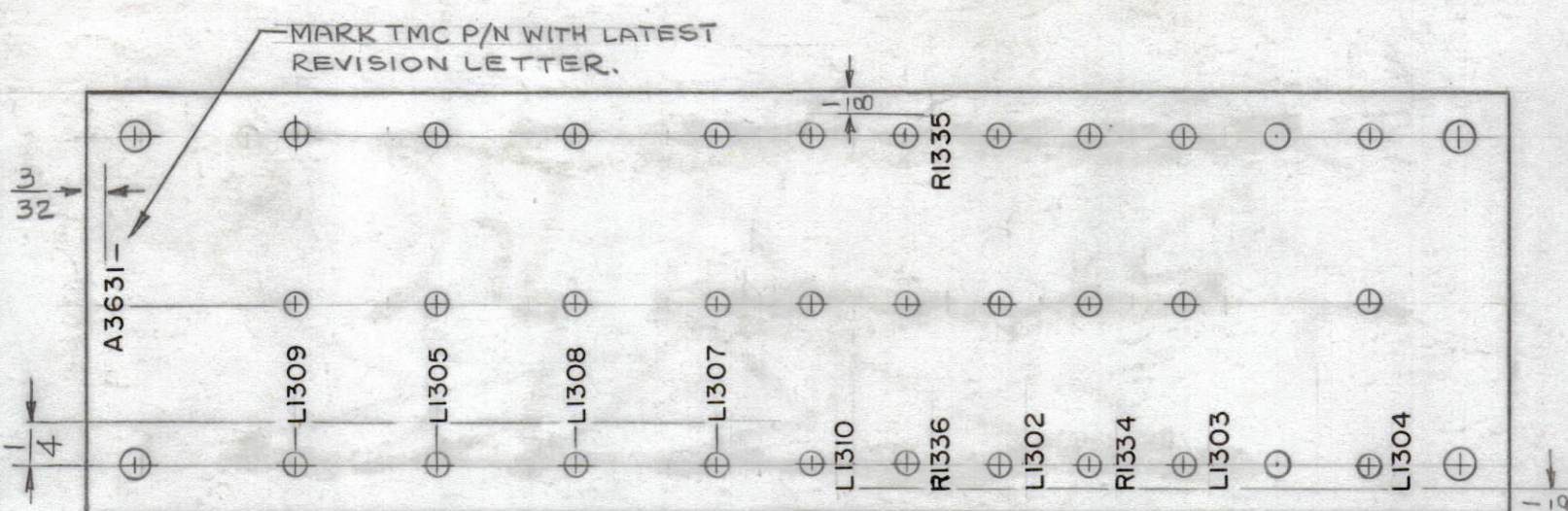


HOLE	DESCRIPTION	REQ
A	.110 DIA.	23
B	.147 DIA.	4
C	.120 DIA.	9

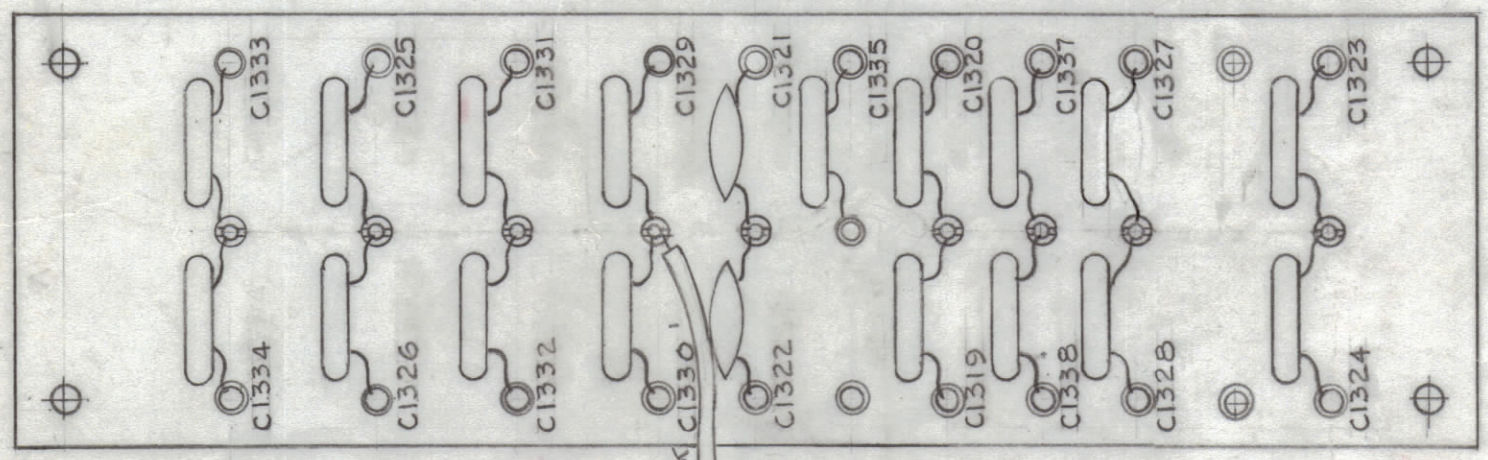
REVISIONS						
ZONE	SYM	DESCRIPTION	DATE	E.M.N. NO.	DRAFT	CHKD
	X	EXPERIMENTAL RELEASE	5-15-64	H	G.D.L.	
	X1	"REQ'D" ITEM (1) WAS 21	5-28-64	H	G.D.L.	
	X2	ITEM 9 WAS COIL, RF, FIXED 50uH	8-4-64		G.D.L.	
	Ø	ORIGINAL RELEASE FOR PRODUCTION	8-15-64		hpb	
	A	IT. 2 WAS 16 REQ. # SYMB. C1327 ADD. IT. 3 WAS 3 REQ. SYM. C1327 DELE. IT. 6 SYM. WAS R1304, ON PICT. IT. II ADD. (2PL) STYLE OF C1327W. DISC.	9.10.64	12287	hpb	hpb
	B	RESISTORS TOL. WAS K (LT. 4.5.6)	2-28-67	17844	hpb	hpb



MACHINING (A3631-1)
 MATERIAL: XXXP PHENOLIC, 1/8 THK.
 FINISH: NATURAL



MARKING (A3631-2)
 MARKING PROCESS: AS PER TMC SPECIFICATION S-727.
 LETTERING: 3/32 HIGH BLACK GOTHIC, LOCATED AS SHOWN.
 FUNGUS PROOFING PER TMC SPECIFICATION S-113, AFTER MARKING PROCESS.
 MARKING PART NO. WITH LATEST REVISION LETTER, 3/32 HIGH BLACK GOTHIC.



FINAL ASSY (A3631-4)

REQ'D.	ITEM	PART NUMBER	DESCRIPTION	SYMBOL
X	15	BS 100	SOLDER SOFT	
X	14	PX 104-7-.034	INSULATION, SLEEVING	
2"	13	MWC20(7)UO	WIRE, INSULATED	BLACK
9	12	TE 109-3	TERMINAL, SPLIT LUG	C
X	11	WL 100-7	WIRE, BUSS-BAR #22	
J	10	CL 140-1	COIL, RF, FIXED 2.5 MH	L1310
3	9	CL 226-5	COIL, RF, FIXED 50 MH	
2	8	CL 291	COIL, RF, FIXED	
2	7	CL 292	COIL, RF, FIXED	
1	6	RC42GF332J	RESISTOR, FIXED, COMPOSITION	R1334
1	5	RC20GF153J	RESISTOR, FIXED, COMPOSITION	R1336
1	4	RC 20GF104J	RESISTOR, FIXED, COMPOSITION	R1335
2	3	CC 100-24	CAPACITOR, FIXED, CERAMIC .02 uF	
17	2	CC 100-37	CAPACITOR, FIXED, CERAMIC 0.1uF	
23	1	TE 202-3	TERMINAL, TURRET TYPE	A

MATERIAL		THE TECHNICAL MATERIEL CORP. MAMARONECK, NEW YORK	
FINISH		TITLE	
SEE MACHINING		TERMINAL BOARD ASSY	
SEE MACHINING			
UNLESS OTHERWISE SPECIFIED DIMENSIONS ARE IN INCHES AND INCLUDE CHEMICALLY APPLIED OR PLATED FINISHES		DRAWN G.D.L.	DATE 4-30-64
DECIMALS .X ± .05 .XX ± .01 .XXX ± .005		CHECKED @	DATE 8-15-64
FRACTIONS ± 1/64 ANGLES ± 0° 30'		ELECT. DES. Anger	DATE 5/19/64
TOLERANCES ± 1/64 ANGLES ± 0° 30'		MECH. DES.	DATE
		SHEET	
		REV. LTR.	

QTY./UNIT	MODEL USED ON	ASSY. NO.
1	HEB-2	AX512
SCALE 1:1	CODE A	

NOTES

THE CONTENTS OF THIS DRAWING ARE THE EXCLUSIVE PROPERTY OF THE TECHNICAL MATERIEL CORP. ITS UNAUTHORIZED USE OR REPRODUCTION IN WHOLE OR IN PART IS STRICTLY FORBIDDEN.