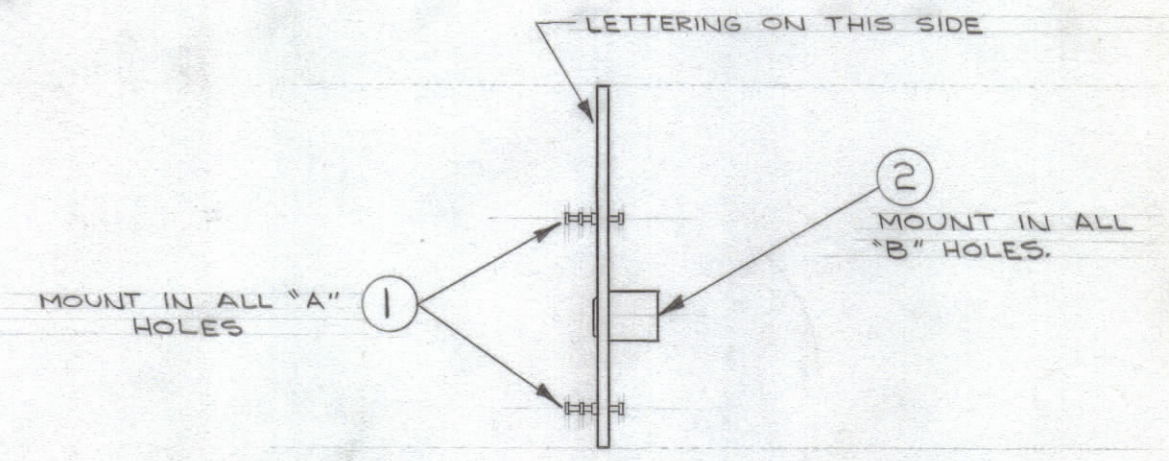
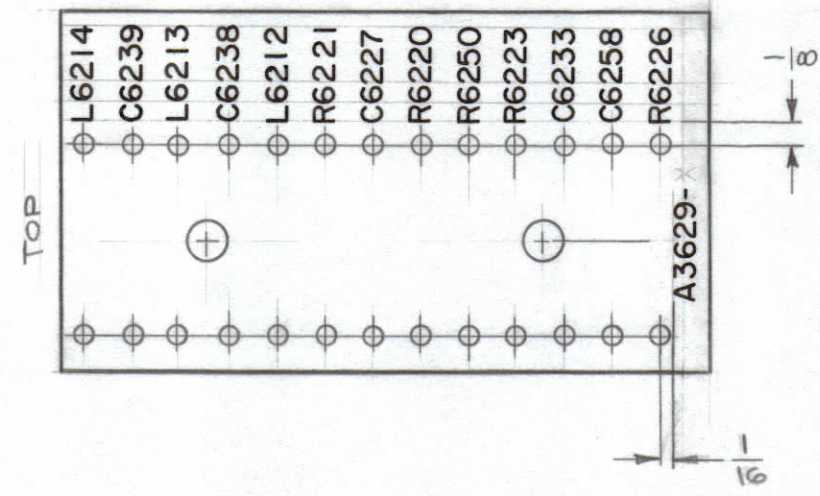
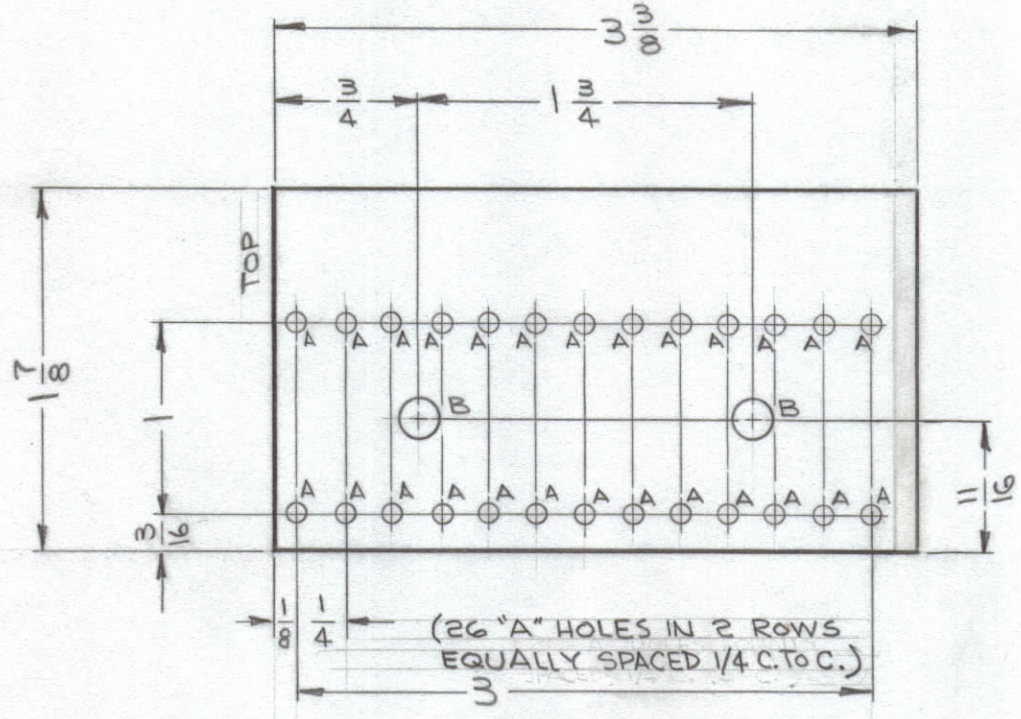


LEGEND		
HOLE	DESCRIPTION	REQ
A	.078 DIA.	26
B	.189 DIA.	2

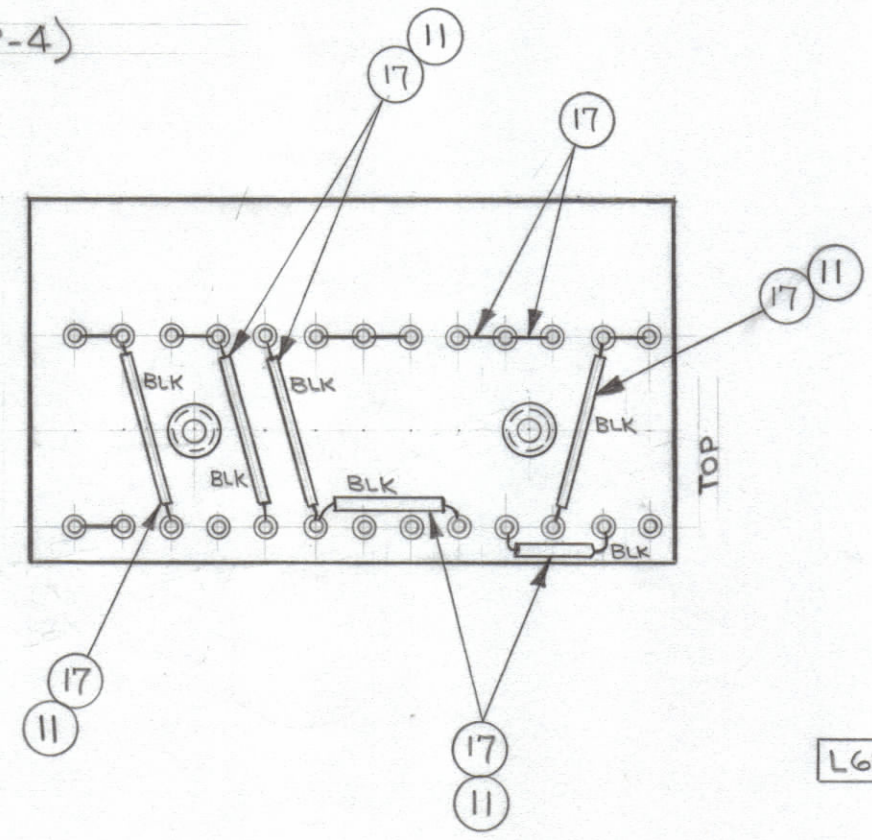
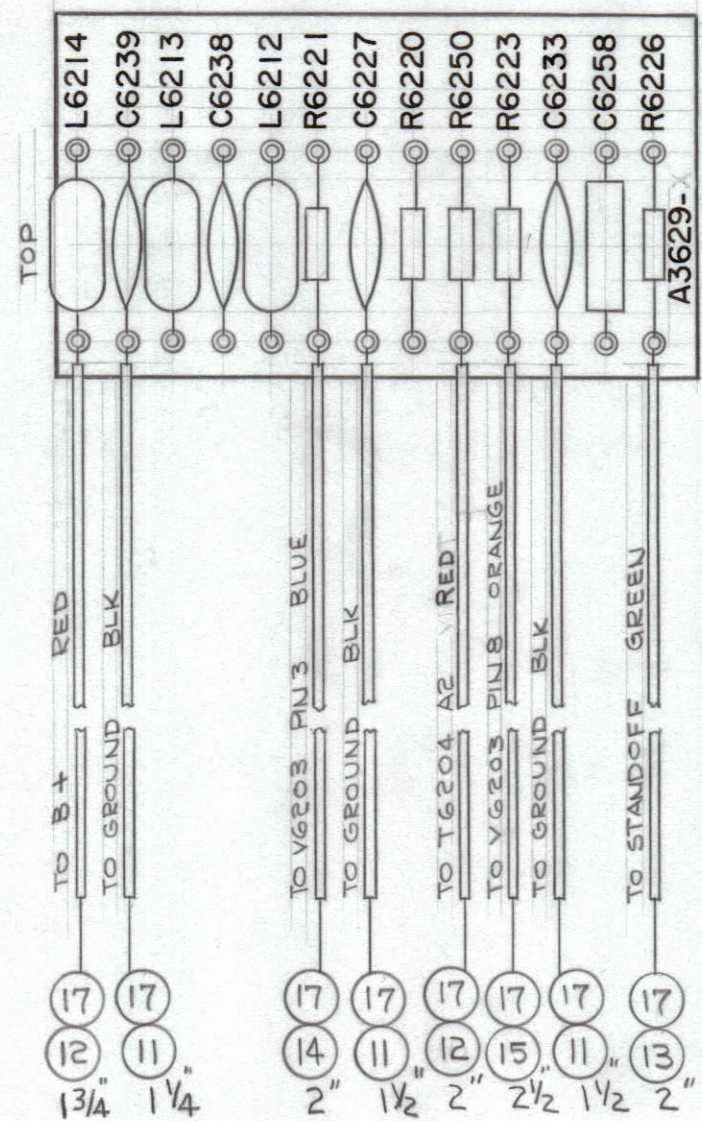
UNLESS OTHERWISE SPECIFIED:  
 MARKING PROCESS: AS PER TMC SPECIFICATION S-727.  
 LETTERING: 1/8 HIGH BLACK GOTHIC, LOCATED AS SHOWN.  
 FUNGUS PROOFING PER TMC SPECIFICATION S-113 AFTER MARKING PROCESS.  
 MARK TMC PART NO. WITH LATEST REVISION LETTER, 1/8 HIGH BLACK GOTHIC

REVISIONS							
ZONE	SYM	DESCRIPTION	DATE	E.M.N. NO.	DRAFT	CHKD	APPD
	X	EXPER. RELEASE	5-1-64	1			
	X1	ITEM 10 WAS CM15B391K ALL RESISTORS WERE "K" TOL	10/4/65	X1			
	Ø	ORIGINAL RELEASE FOR PRODUCTION	11-1-65	Ø			
	A	DELE IT. 16. ADD LEAD DIMS. CHG'D VIOLET TO RED	11/11/66	17242	RME		



MATERIAL - EPOXY G-10, 1/16 THICK  
 FINISH - NATURAL - FOLLOWS PROCEDURE PER TMC SPEC S-113

-ELECTRICAL ASSY- (A3629-4)



NOTE:  
 ALL SLEEVING TO BE 1/2" SHORTER THAN BUSS WIRE ON COMPONENT SIDE OF BOARD

REQ'D.	ITEM	PART NUMBER	DESCRIPTION	SYMBOL
X	18	BS100	SOLDER, SOFT	
X	17	WL100-6	WIRE, BUSS (#20)	
	16	DELETED - 034	SLEEVING, INSULATION	
	15	PX104-8-034	SLEEVING, INSULATION	
	14	PX104-6-034		
	13	PX104-4-034		
	12	PX104-3-034		
	11	PX104-1-034	SLEEVING, INSULATION	
1	10	CM15F391J03	CAPACITOR, FIXED, MICA	C6258
3	9	CL140-1	COIL, MOLDED	
4	8	CC100-37	CAPACITOR, FIXED, CERAMIC	
1	7	RC42GF472J	RESISTOR, FIXED, COMPOSITION	R6250
1	6	RC20GF472J		R6221
1	5	RC20GF223J		R6220
1	4	RC20GF153J		R6223
1	3	RC20GF104J	RESISTOR, FIXED, COMPOSITION	R6226
2	2	TE108-6	STANDOFF, RIVET TYPE	B
26	1	TE168-4-B	TERMINAL, MINIATURE	A

O. POSE LIST OF MATERIAL			
MATERIAL SEE MACHINING		THE TECHNICAL MATERIEL CORP. MAMARONECK, NEW YORK	
FINISH SEE MACHINING		TITLE TERMINAL BOARD ASSY (250 KC OSC & AMP)	
DRAWN 5-1-64	DATE 5-1-64	FINAL APPROVAL	DATE
CHECKED 6/26/65	DATE 6/26/65		10/30/65
ELECT. DES. 10/29/65	DATE 10/29/65	A3629	
MECH. DES. 10/29/65	DATE 10/29/65	SHEET	REV. LTR.

SBS-7 A2873		
Q'TY./UNIT	MODEL USED ON	ASSY. NO.
SCALE 1:1	CODE A	
THE CONTENTS OF THIS DRAWING ARE THE EXCLUSIVE PROPERTY OF THE TECHNICAL MATERIEL CORP. ITS UNAUTHORIZED USE OR REPRODUCTION IN WHOLE OR IN PART IS STRICTLY FORBIDDEN.		

NOTES

A3629 A