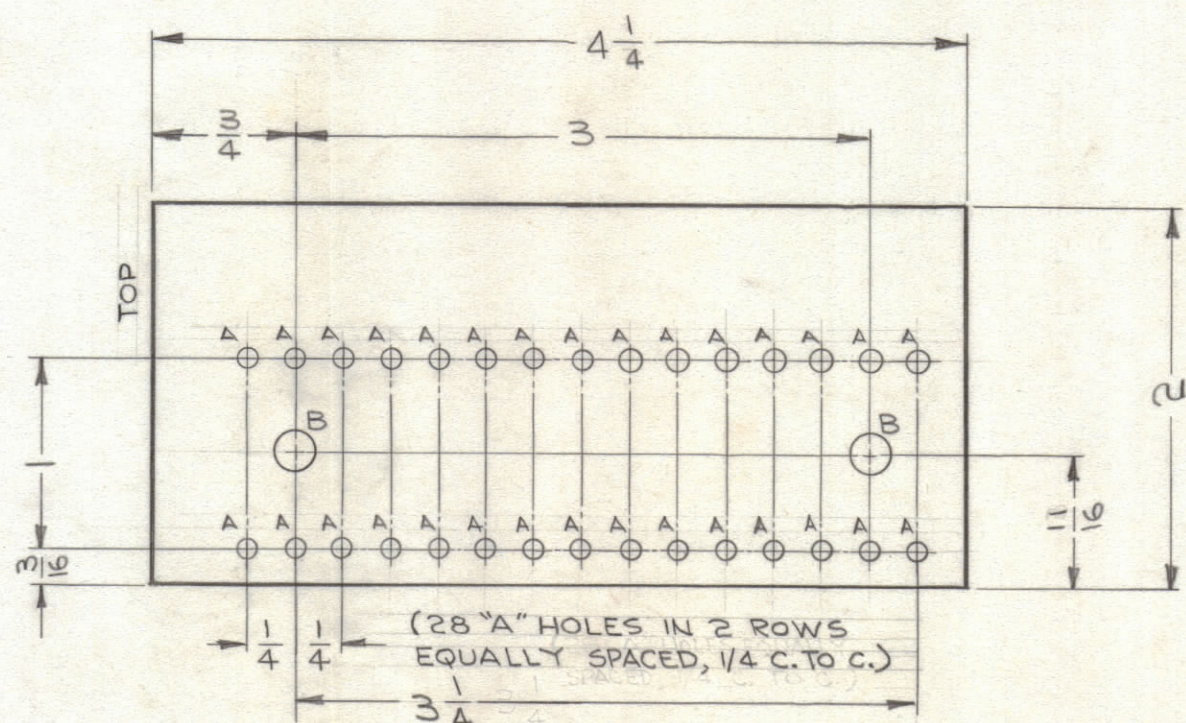


LEGEND		
HOLE	DESCRIPTION	REQ.
A	.078 DIA.	30
B	.189 DIA.	2

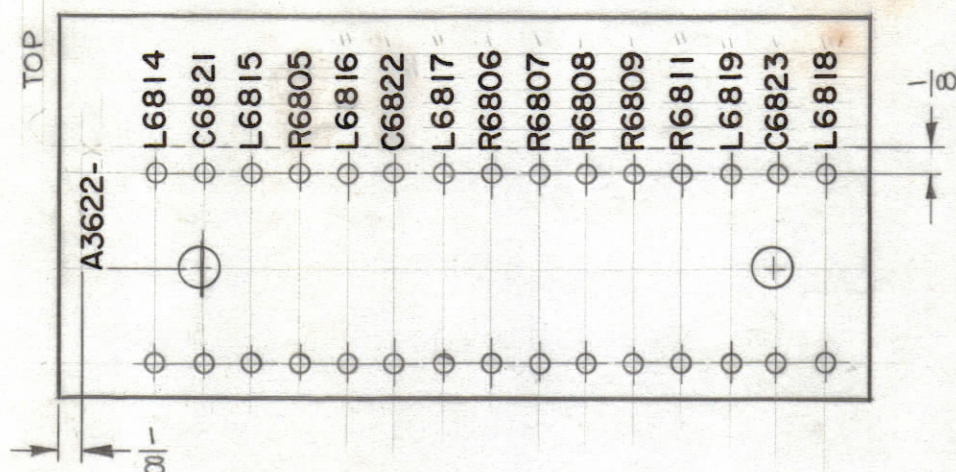
REVISIONS						
ZONE	SYM	DESCRIPTION	DATE	E.M.N. NO.	DRAFT	CHKD
	X	EXPER. RELEASE	4/24/64	1		
B2	X1	ITEM 3 ADDED	7-5-64	2		
	X2	ITEM 9 WAS CM15B511J ALL RESISTORS WERE "K" TOL	4/65	X2		
	Ø	ORIGINAL RELEASE FOR PRODUCTION	11/65	Ø		

UNLESS OTHERWISE SPECIFIED:
 MARKING PROCESS: AS PER TMC SPECIFICATION S-727.
 LETTERING: 1/8 HIGH BLACK GOTHIC, LOCATED AS SHOWN.
 FUNGUS PROOF PER TMC SPEC S-113, AFTER MARKING PROCESS.
 MARK TMC PART NO WITH LATEST REVISION LETTER, 1/8 HIGH BLACK GOTHIC.

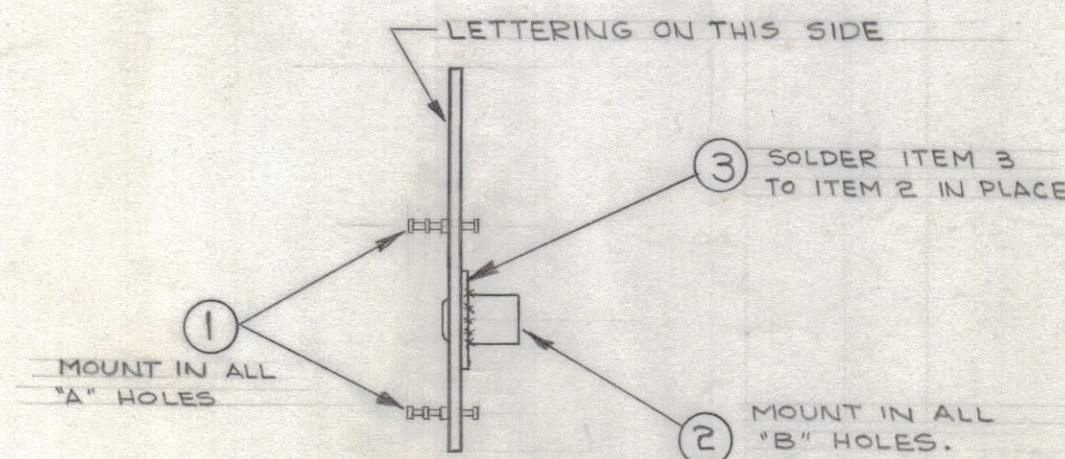


-MACHINING- (A 3622-1)

MATERIAL - EPOXY G-10, 1/16 THICK
 FINISH - NATURAL FUNGUS PROOF PER TMC SPEC S-113.

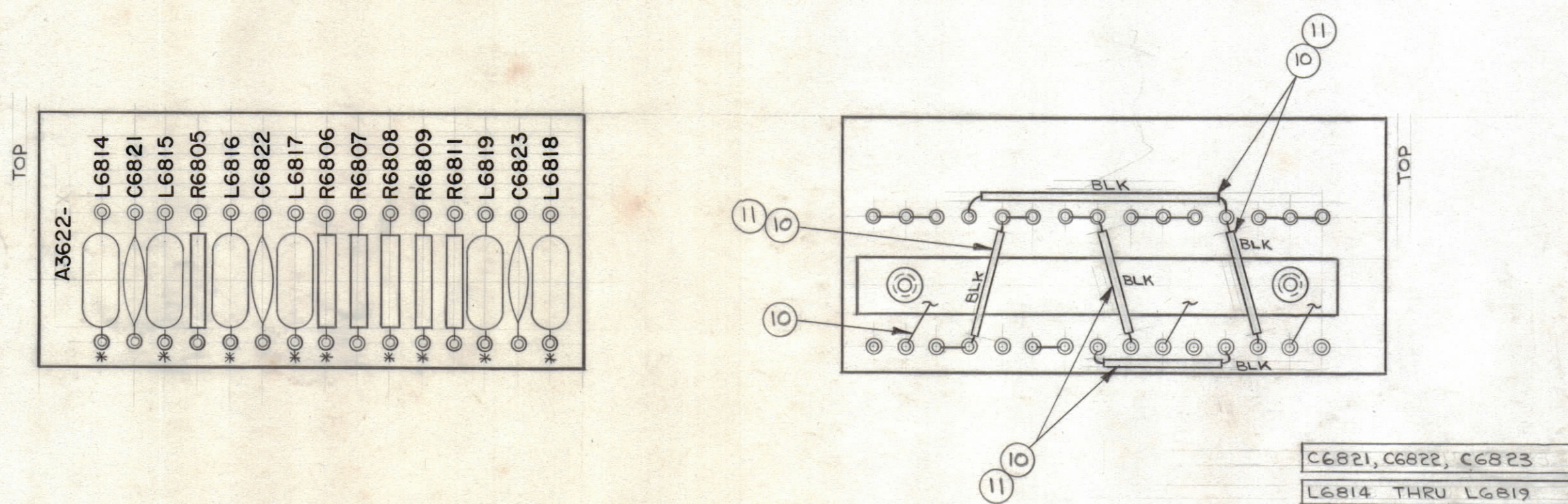


-MARKING- (A 3622-2)



-SUB-ASS'Y- (A 3622-3)

-ELECTRICAL ASS'Y- (A 3622-4)



NOTE:
 1 - * DENOTES DO NOT SOLDER
 2 - ALL

REQ'D.	ITEM	PART NUMBER	DESCRIPTION	SYMBOL
X	12	BS100	SOLDER, SOFT	
X	11	PX104-1-034	SLEEVING, INSULATION	
X	10	WL100-6	WIRE, BUSS (# 20)	
3	9	CM15F511J03	CAPACITOR, FIXED, MICA	
6	8	GL270-10	COIL, MOLDED	
1	7	RC42GF681J	RESISTOR, FIXED, COMPOSITION	R6809
2	6	RC20GF472J		R6805 R6808
1	5	RC20GF332J		R6811
2	4	RC20GF331J	RESISTOR, FIXED, COMPOSITION	R6806 R6807
1	3	MS202-37-3.750	STRIP, TERMINAL, GROUNDING	B
2	2	TE108-2	STANDOFF, RIVET TYPE	B
30	1	TE168-4-B	TERMINAL, MINIATURE	A

O. POSE		LIST OF MATERIAL			
MATERIAL		THE TECHNICAL MATERIEL CORP. MAMARONECK, NEW YORK			
FINISH		TITLE TERMINAL BOARD ASSY (CHAN. "A" AUDIO)			
SEE MACHINING		DRAWN: [Signature]			
SEE MACHINING		DATE: 4-18-64			
SEE MACHINING		CHECKED: [Signature]			
SEE MACHINING		DATE: 10/26/65			
SEE MACHINING		ELECT. DES. [Signature]			
SEE MACHINING		DATE: 10-28-65			
SEE MACHINING		MECH. DES. [Signature]			
SEE MACHINING		DATE: 10-28-65			
SEE MACHINING		SHEET			
SEE MACHINING		REV. LTR.			

1	585-7	A2874
Q'TY./UNIT	MODEL USED ON	ASS'Y. NO.
SCALE	CODE	
1:1	A	
THE CONTENTS OF THIS DRAWING ARE THE EXCLUSIVE PROPERTY OF THE TECHNICAL MATERIEL CORP. ITS UNAUTHORIZED USE OR REPRODUCTION IN WHOLE OR IN PART IS STRICTLY FORBIDDEN.		

NOTES

A 3622