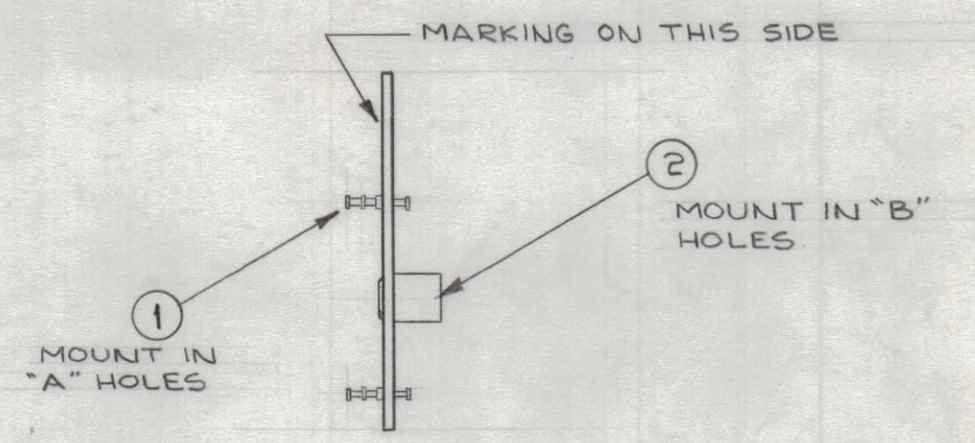
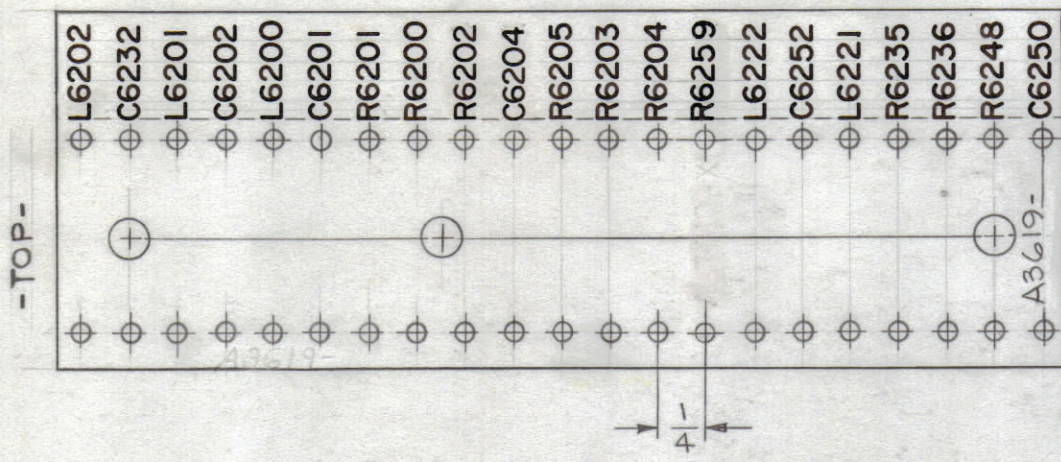
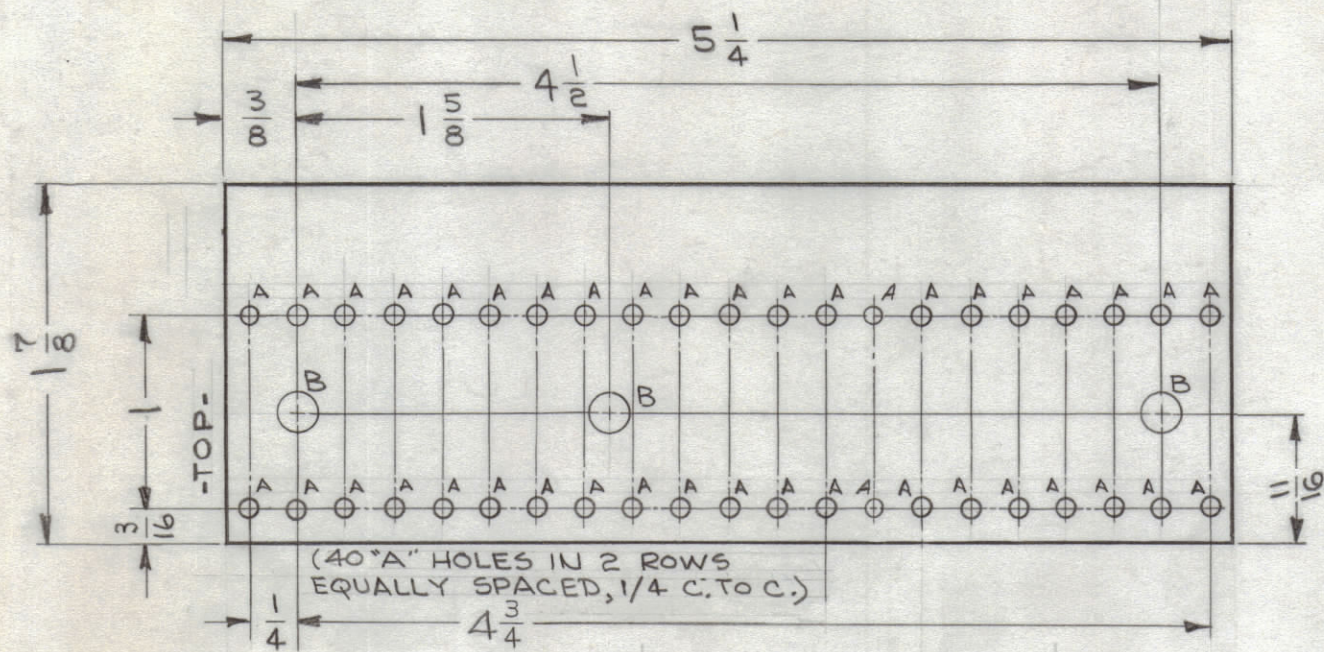


LEGEND		
HOLE	DESCRIPTION	REQ.
A	.078 DIA.	42
B	.189 DIA.	3

UNLESS OTHERWISE SPECIFIED:
 MARKING PROCESS: AS PER TMC SPECIFICATION S-727.
 LETTERING: 1/8 HIGH BLACK GOTHIC, LOCATED AS SHOWN.
 FUNGUS PROOF PER TMC SPEC S-113, AFTER MARKING PROCESS.
 MARK TMC PART NO WITH LATEST REVISION LETTER, 1/8 HIGH BLACK GOTHIC.

REVISIONS						
ZONE	SYM	DESCRIPTION	DATE	E.M.N. NO.	DRAFT	CHKD
	X	EXPER. RELEASE	4-23-64	1	B. Jensen	
G4, E7	X1	R6202 & C6204 REVERSED; MATERIAL WAS XXXP PHENOLIC	5-12-64	2	Pherson	SD
	X2	ALL RESISTORS WERE "K" TOL	10/9/65	X2		
	Ø	ORIGINAL RELEASE FOR PRODUCTION	11/65	Ø	H.V.I.	
A	A	DELE. IT. 19. ADDED LEAD LENGTHS CHG'D IT 19 CALLOUT TO 14.	11-15-64	17243	RME	QCB
B	B	ADDED ITEMS 21 & 22. ADDED 2 HOLES "A" ON (#3619-1). RELOCATE TMC DT. NO ON A3619-2	3-6-67	17909	L.A.K.	QCB/MB

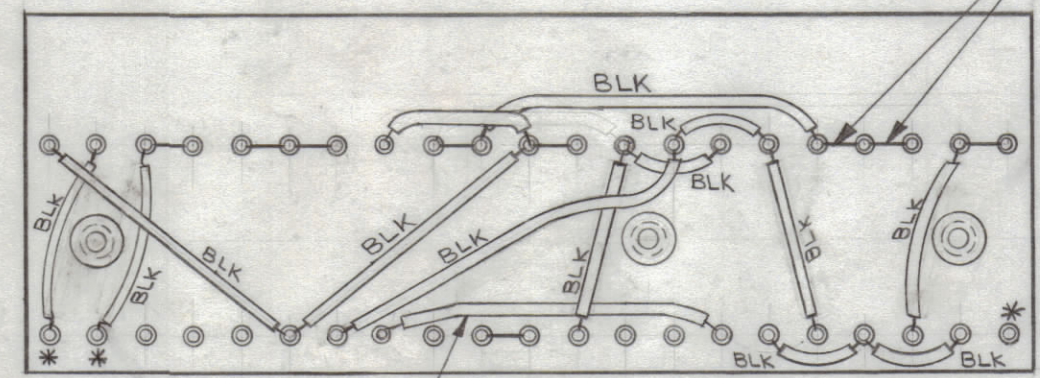
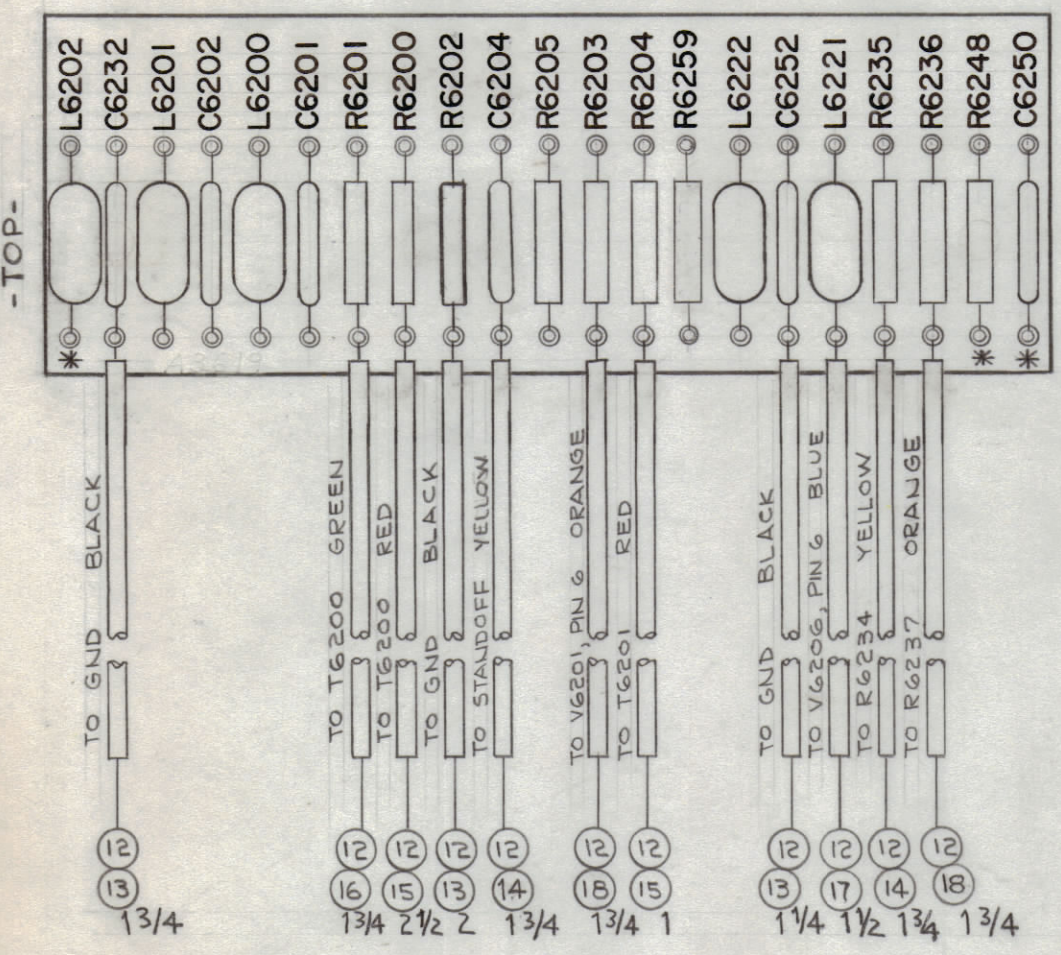


-MACHINING- (A 3619-1)
 MATERIAL - EPOXY G-10, 1/16 THICK
 FINISH - NATURAL

-MARKING- (A 3619-2)

-SUB-ASS'Y- (A 3619-3)

-ELECTRICAL ASS'Y- (A 3619-4)



- R6259
- R6201
- L6200 TO L6202, L6222, L6221
- C6201, 6202, 6232, C6250, 6252
- R6236, 6235

REQ'D.	ITEM	PART NUMBER	DESCRIPTION	SYMBOL
	1	22	RC20GF824J	RES. FXD COMP
	1	21	RC20GF474J	RES. FXD COMP
X	20	BS 100	SOLDER, SOFT	
	19	DELETED		
	18	PX 104-B-034	SLEEVING, INSULATION	
	17	PX 104-6-034		
	16	PX 104-4-034		
	15	PX 104-3-034		
	14	PX 104-2-034		
	13	PX 104-1-034	SLEEVING, INSULATION	
X	12	WL 100-6	WIRE, BUSS (*20)	
5	11	CL 140-1	COIL, RF, MOLDED	
5	10	CC 100-37	CAPACITOR, FIXED, CERAMIC	
1	9	CC 100-16	CAPACITOR, FIXED, CERAMIC	C6204
1	8	RC20GF823J	RESISTOR, FIXED, COMPOSITION	R6248
1	7	563J		R6203
1	6	473J		R6205
2	5	472J		R6200
1	4	224J		R6204
2	3	RC20GF104J	RESISTOR, FIXED, COMPOSITION	R6202
3	2	TE 108-6	STANDOFF, RIVET TYPE	B
42	1	TE 168-4-B	TERMINAL, MINIATURE	A

NOTE:
 1- * DENOTES DO NOT SOLDER
 2- ALL SLEEVING TO BE 1/2" SHORTER THAN BUSS WIRE, ON COMPONENT SIDE.

1	SBS-7	A2873
Q'TY./UNIT	MODEL USED ON	ASS'Y. NO.
SCALE 1:1	CODE A	
THE CONTENTS OF THIS DRAWING ARE THE EXCLUSIVE PROPERTY OF THE TECHNICAL MATERIEL CORP. ITS UNAUTHORIZED USE OR REPRODUCTION IN WHOLE OR IN PART IS STRICTLY FORBIDDEN.		

O. POSE LIST OF MATERIAL			
MATERIAL SEE MACHINING		THE TECHNICAL MATERIEL CORP. MAMARONECK, NEW YORK	
FINISH SEE MACHINING		TITLE TERMINAL BOARD ASS'Y (AGC & MIXER)	
UNLESS OTHERWISE SPECIFIED DIMENSIONS ARE IN INCHES AND INCLUDE CHEMICALLY APPLIED OR PLATED FINISHES	DRAWN G. Jensen	DATE 4-27-64	FINAL APPROVAL [Signature]
	CHECKED [Signature]	DATE 10/26/65	DATE 10/30/65
DECIMALS X ± .05 XX ± .01 .XXX ± .005	TOLERANCES	ELECT. DES. [Signature]	DATE 10/28/65
		MECH. DES. [Signature]	DATE 10/27/65
		A 3619	
		SHEET	REV. LTR.

NOTES