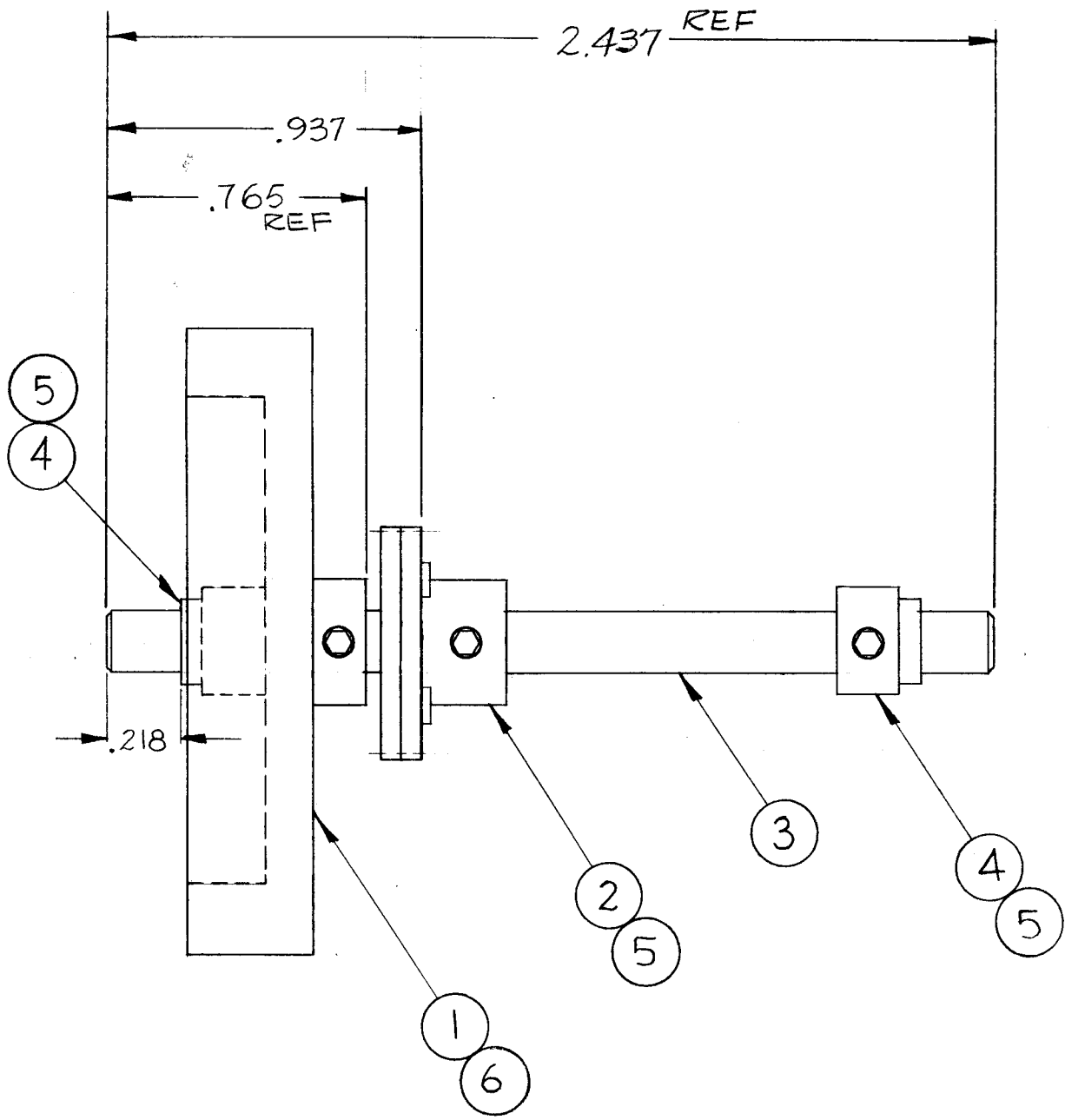


A 3602 A

REVISIONS

SYM	DESCRIPTION	DATE	E.M.N. NO.	DRAFT	CHKD	APPD
X	EXP. RELEASE	4-14-64				
Ø	ORIGINAL RELEASE FOR PRODUCTION	9-14-64	Ø	RL		
A	IT. 3 WAS PM1050 2.312. ADD IT. 5 & 6	9-14-66	16843	RME		<i>[Signature]</i>



ASSEMBLY PROCEDURE

- 1.- ASSEMBLE ITEM 4 TO ITEM 3 (.218) FROM L.H EDGE AS SHOWN, TIGHTEN SET SCREWS FIXING ITEM 4 IN PLACE.
- 2.- ASSEMBLE ITEM 1 & 3 AS SHOWN SO INSIDE FACE OF ITEM 1 IS FLUSH WITH ITEM 4. THEN TIGHTEN SET SCREWS FIXING ITEM 1 IN PLACE.
- 3.- ASSEMBLE ITEM 2 TO ITEM 3 AS SHOWN AND TIGHTEN SET SCREWS FIXING ITEM 2 IN PLACE.
- 4.- ASSEMBLE SECOND ITEM 4 TO ITEM 3 COMPLETING ASSY.

REQ'D.	ITEM	PART NUMBER	DESCRIPTION	SYMBOL
2	6	SLHC0440SS3	SET SCREW	
6	5	SLHC0632SS3	SET SCREW	
2	4	PM 1062-2	COLLAR, SHAFT	
1	3	PM-1050-RF-2.437	SHAFT, PRECISION (.1873 DIA)	
1	2	GR 178	GEAR, SPUR, SPLIT (.65646 PD)	
1	1	PO 238	PULLEY, GROOVE	

T. KRUY E3112B LIST OF MATERIAL

MATERIAL		THE TECHNICAL MATERIEL CORP. MAMARONECK, NEW YORK	
FINISH		TITLE DIAL DRIVE, ASSY.	
UNLESS OTHERWISE SPECIFIED DIMENSIONS ARE IN INCHES AND INCLUDE CHEMICALLY APPLIED OR PLATED FINISHES		DRAWN <i>Alexis</i>	DATE 4-14-64
		CHECKED <i>[Signature]</i>	DATE 9-11-64
		ELECT. DES.	DATE
		MECH. DES. <i>T. Kruy</i>	DATE
		SHEET A 3602	
		REV. LTR. A	

Q'TY./UNIT	MODEL USED ON	ASS'Y. NO.
1	HFRR-2	A3625
1	HFR-2	A3624
SCALE 2:1	CODE A	

THE CONTENTS OF THIS DRAWING ARE THE EXCLUSIVE PROPERTY OF THE TECHNICAL MATERIEL CORP. ITS UNAUTHORIZED USE OR REPRODUCTION IN WHOLE OR IN PART IS STRICTLY FORBIDDEN.

NOTES