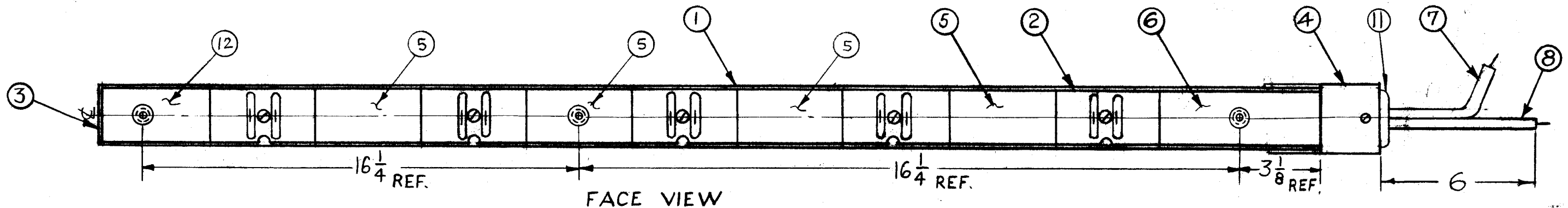


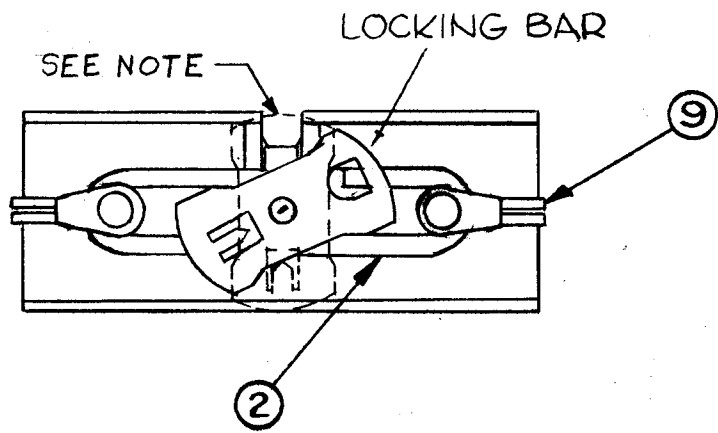
CONNECTION DIAGRAM

A 3592 C

REVISIONS					
SYM	DESCRIPTION	DATE	E.M.N. NO.	DRAFT	CHKD APPD
X	EXPERIMENTAL RELEASE	4-1-64	X	A.M.	
O	ORIGINAL RELEASE	5-13-64	O	AM	@
A	IT.10 BS-100 SOLDER, TINALLOY ADDED. IT (9) WAS TE-112-2 IT.8 WAS MCW 14 (19)UO, IT (7) WAS MCW 14 (19)U9 IT.2 WAS JJ-294 IT.6 WAS PO-163-G, 000 (CC) 6	6/24/65	14340	D.V.V.	
B	REF. DIM. IT. 11, ADDED.; IT.6 WAS PO163-6.250, 7 1/4	5-12-67	18210	L.A.K.	FB
C	IT.12 ADDED, IT.6 WAS PO163-6.250, IT.5 WAS 5 REQ.	11-1-67	18587	H.S.	EFM



FACE VIEW



NOTE:  
GROUNDING CIRCUIT IS COMPLETED TO STRIP CHANNEL, WHEN LOCKING BAR IS ROTATED AS SHOWN (ITEM 2)

REQ'D.	ITEM	PART NUMBER	DESCRIPTION	SYMBOL	
	1	12	PO163-1.000	COVER, CONDUIT, 1"	
	1	11	EY102-7	GROMMET, RUBBER	
X		10	BS100	SOLDER, TIN ALLOY	
	10	9	TE 155-34168	LUG, TERMINAL SOLDERLESS	
X		8	MWC 12 (19)UO	CABLE, INSULATED	BLACK
X		7	MWC 12 (19)U9	CABLE, INSULATED	WHITE
	1	6	PO 163-8,250	COVER, CONDUIT, 6 1/4"	
	4	5	PO 163-3.000	COVER, CONDUIT, 3"	
	1	4	PO 162	CONDUIT OUTLET	
	1	3	PO 161	END FITTING, BLANK	
	5	2	JJ-294-1	CONNECTOR, RECEPTACLE, FML.	
	1	1	MS 1754	CONDUIT, RACEWAY, METAL	

LIST OF MATERIAL

MATERIAL		THE TECHNICAL MATERIEL CORP. MAMARONECK, NEW YORK			
FINISH		TITLE AX499 ASS'Y. AC POWER STRIP ASS'Y.			
UNLESS OTHERWISE SPECIFIED DIMENSIONS ARE IN INCHES AND INCLUDE CHEMICALLY APPLIED OR PLATED FINISHES		DRAWN A.MARINO DATE 4-1-64	CHECKED [Signature] DATE 4-21-64	ELECT. DES. [Signature] DATE 5-12-64	FINAL APPROVAL [Signature] DATE 5-12-64
DECIMALS .X ± .05 .XX ± .01 .XXX ± .005	FRACTIONS ± 1/64 ANGLES ± 0° 30'	TOLERANCES		SHEET A 3592	REV. LTR. C

1	CON-1	
Q'TY./UNIT	MODEL USED ON	ASS'Y. NO.
SCALE	CODE	
	A	
THE CONTENTS OF THIS DRAWING ARE THE EXCLUSIVE PROPERTY OF THE TECHNICAL MATERIEL CORP. ITS UNAUTHORIZED USE OR REPRODUCTION IN WHOLE OR IN PART IS STRICTLY FORBIDDEN.		

NOTES