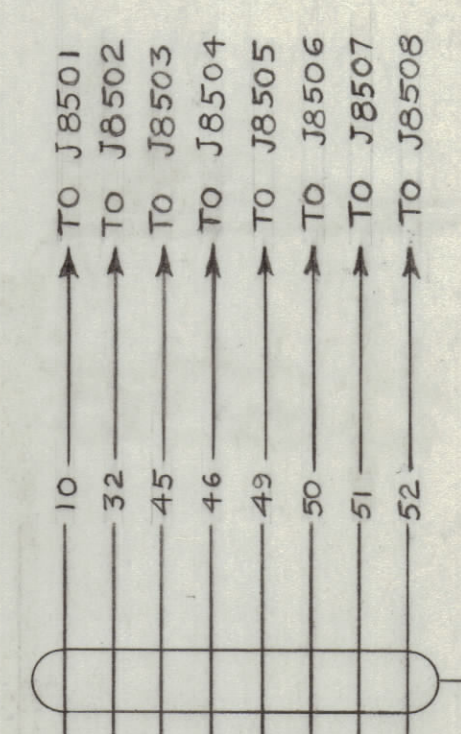
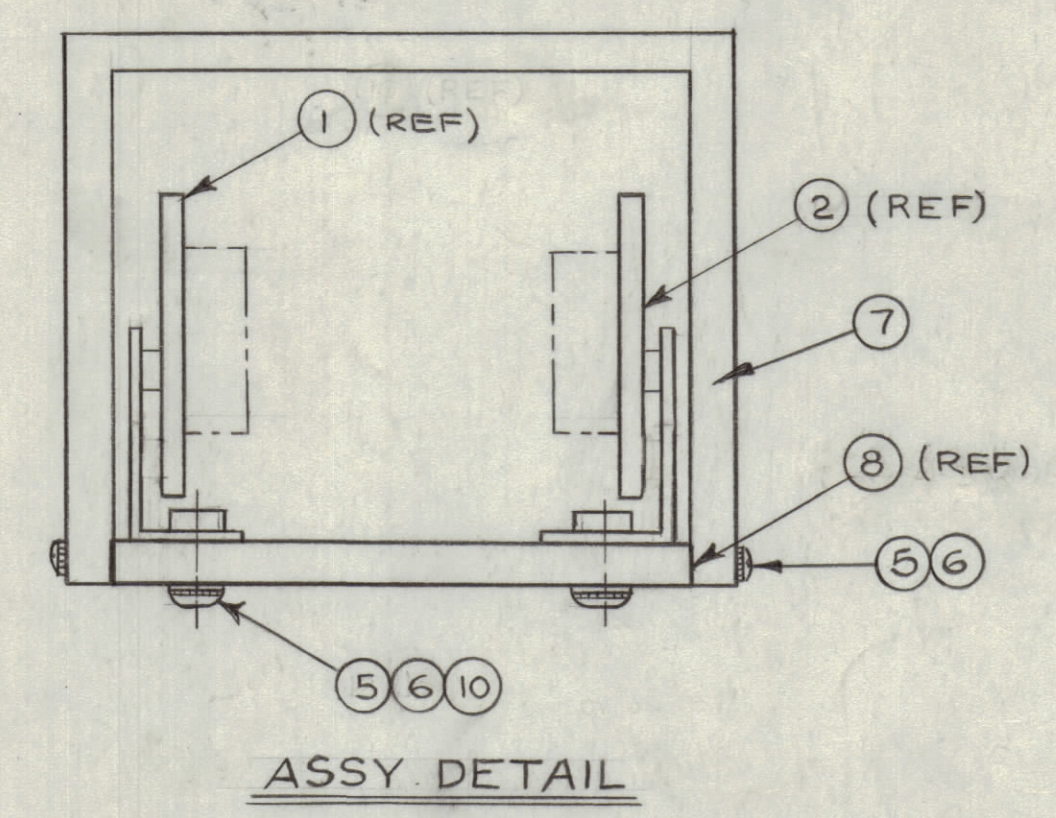
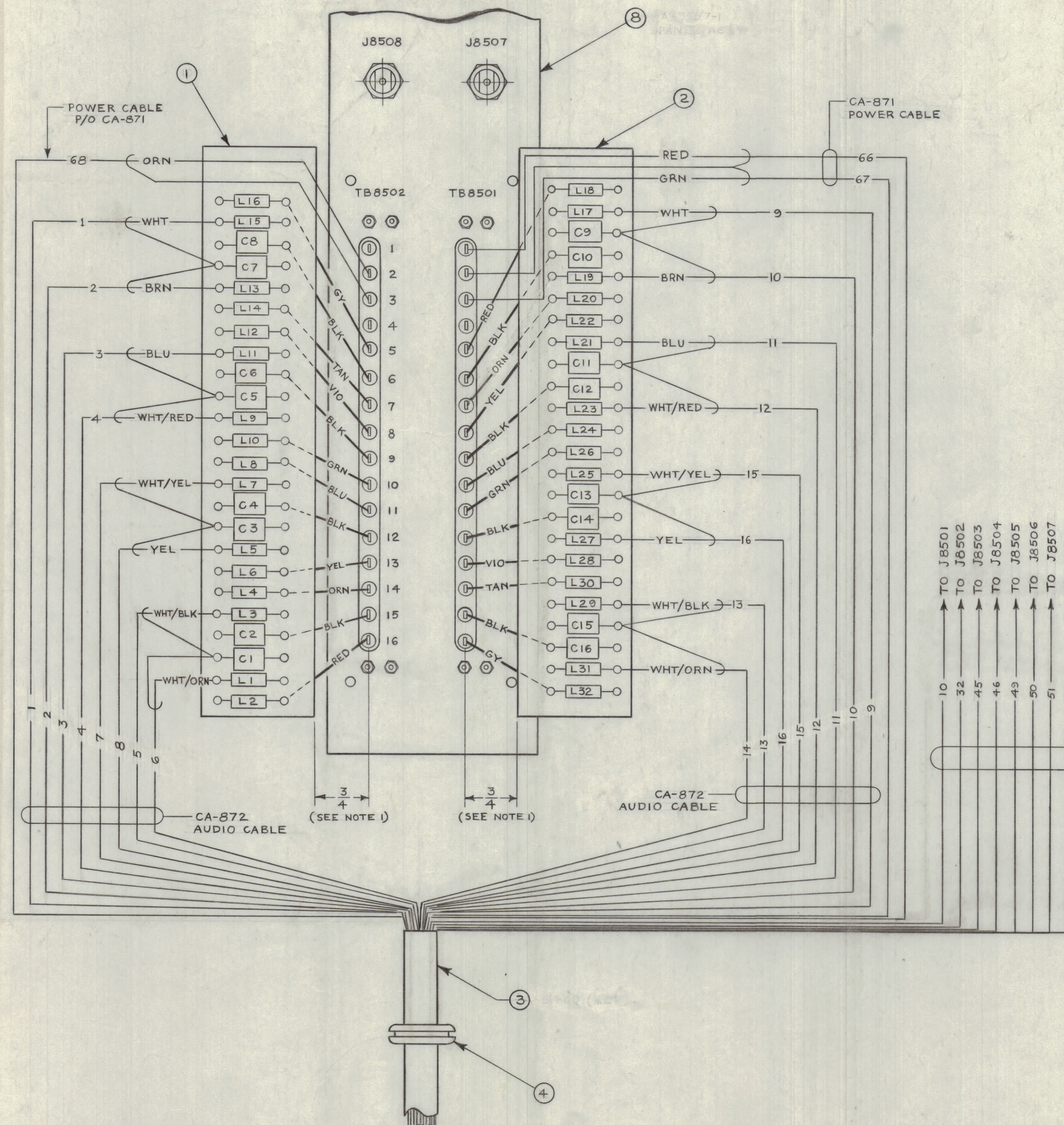


REVISIONS							
ZONE	SYM	DESCRIPTION	DATE	E.M.N. NO.	DRAFT	CHKD	APPD
X		EXPERIMENTAL RELEASE	3-20-64		N.P.		
X	1	A3557-1 PANEL ASSY DELE, PICT. # B/M REV.	2-4-65	X	15B	JLL	
Ø		ORIGINAL RELEASE FOR PRODUCTION	3-8-65		M	JLL	26



NOTE:
 1. WHEN SOLDERING LEADS OF ITEMS ① & ② TO PANEL ASSY POSITION BOARDS TO APPROX DIMENSION AS SHOWN, SEE ASSY DETAIL FOR ASSY AFTER WIRING.

QTY	ITEM	PART NUMBER	DESCRIPTION	SYMBOL
4	10	FW06HBN	WASHER, FLAT	
X	9	BS100	SOLDER, TIN ALLOY	
1	8	A4030	BOARD ASSY, INTERCONNECT	
1	7	MS3664	CHASSIS, INTERCONNECT BOARD	
16	6	LWE06MRN	WASHER, LOCK, EXTERNAL	
16	5	SCBP0632BN 6	SCREW, MACHINE	
1	4	EY102-22	GROMMET, RUBBER	
1	3	A3733	WIRING HARNESS ASSY	
1	2	A3417-4	TERM. BOARD FINAL ASSY	
1	1	A3416-4	TERM. BOARD FINAL ASSY	

M. STURMER LIST OF MATERIAL			
MATERIAL	FINISH	THE TECHNICAL MATERIEL CORP. MAMARONECK, NEW YORK	
—	—	TITLE: WIRING HARNESS/FILTER ASSY	
UNLESS OTHERWISE SPECIFIED DIMENSIONS ARE IN INCHES AND INCLUDE CHEMICALLY APPLIED OR PLATED FINISHES	DRAWN: <i>M. Sturmer</i>	DATE: 3/20/64	FINAL APPROVAL: <i>[Signature]</i>
DECIMALS: .X ± .05, .XX ± .01, .XXX ± .005	CHECKED: <i>[Signature]</i>	DATE: 1-9-65	DATE: 1-9-65
FRACTIONS: ± 1/64, ANGLES: ± 0' 30"	ELECT'DR: <i>[Signature]</i>	DATE: 1-9-65	DATE: 1-9-65
TOLERANCES: ± 0' 30"	MECH'DR: <i>[Signature]</i>	DATE: 1-9-65	DATE: 1-9-65
THE CONTENTS OF THIS DRAWING ARE THE EXCLUSIVE PROPERTY OF THE TECHNICAL MATERIEL CORP. ITS UNAUTHORIZED USE OR REPRODUCTION IN WHOLE OR IN PART IS STRICTLY FORBIDDEN.	SHEET: A-3557 REV. LTR: Ø		

FUNGUS PROOFING PER TMC SPECIFICATION S-113

NOTES

SCALE	MODEL USED ON	ASSY. NO.
1:1	RAK-35A	MSG A-1

A-3557-1 PANEL ASSY

A-3557