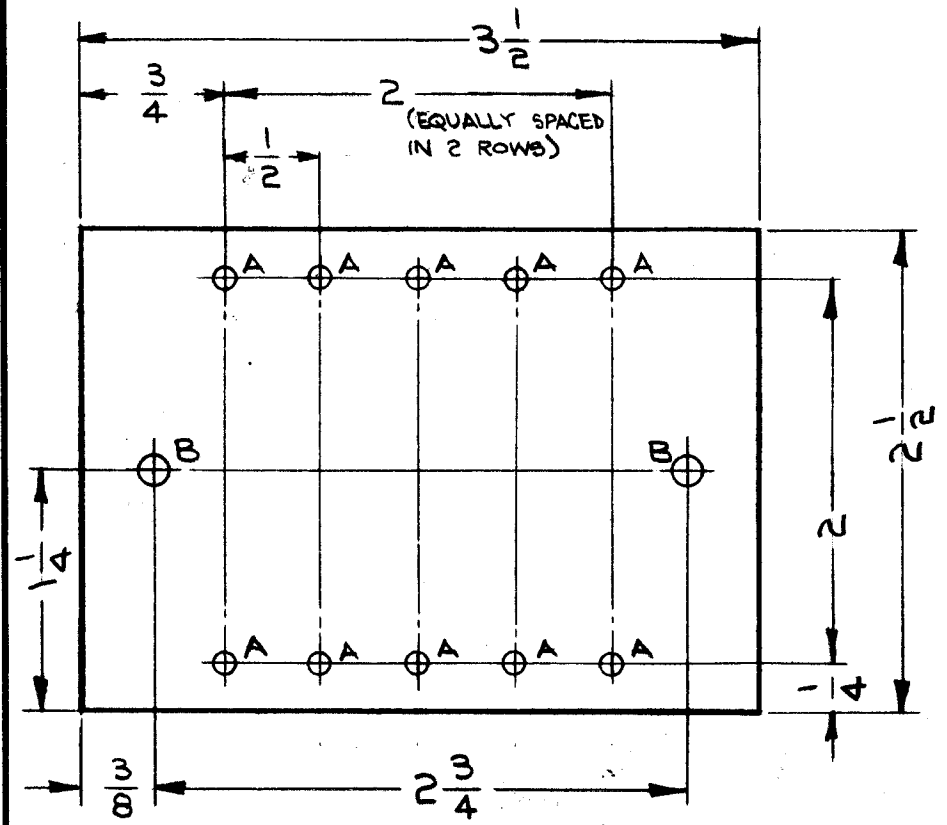


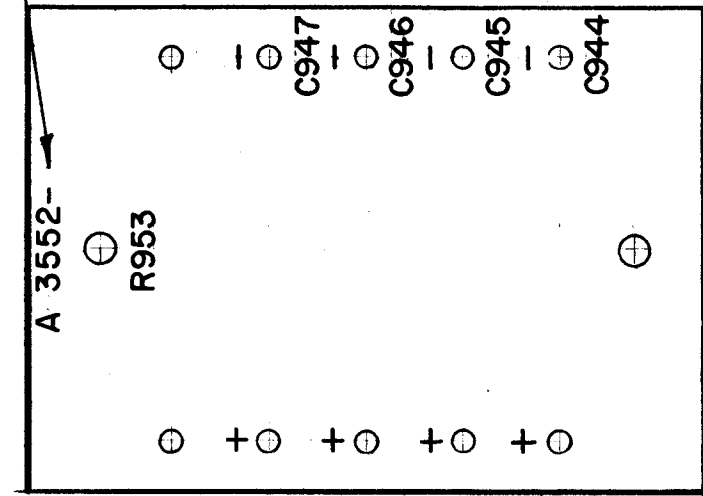
LEGEND		
HOLE	DESCRIPTION	REQ
A	.110 DIA	10
B	.189 DIA.	2



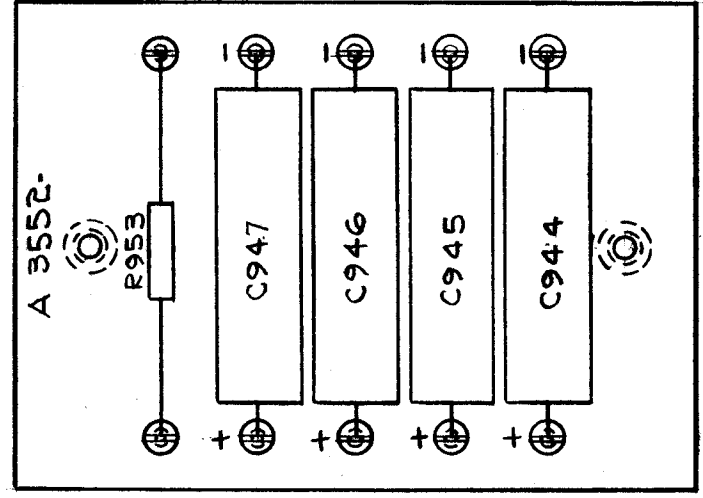
MACHINING (A 3552-1)

**UNLESS OTHERWISE SPECIFIED:**  
**MARKING PROCESS: AS PER THE SPECIFICATION 8-727,**  
**LETTERING: 1/8 HIGH BLACK GOTHIC,**  
**LOCATED AS SHOWN.**

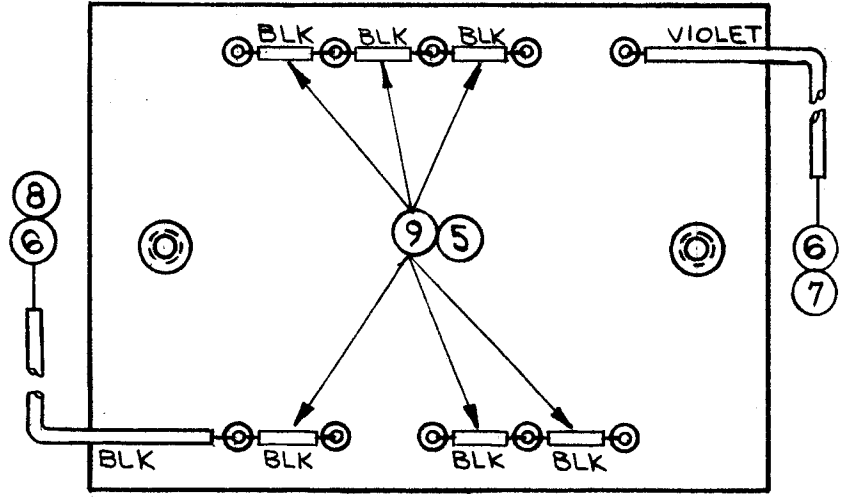
MARK TMC PART NO. WITH LATEST REVISION LETTER



MARKING (A 3552-2)



ELECTRICAL ASSY (A 3552-4)



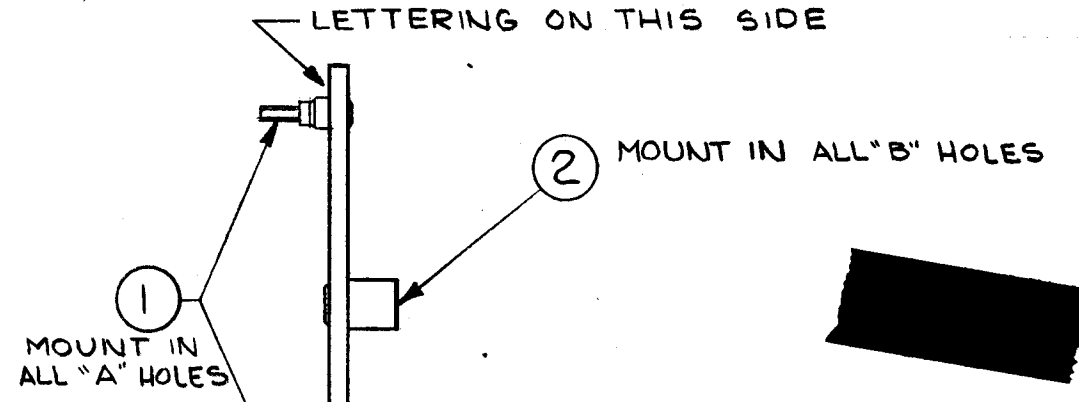
NOTES

1	CSS-2	
Q'TY./UNIT	MODEL USED ON	ASS'Y. NO.
SCALE 1:1	CODE A	
THE CONTENTS OF THIS DRAWING ARE THE EXCLUSIVE PROPERTY OF THE TECHNICAL MATERIEL CORP. ITS UNAUTHORIZED USE OR REPRODUCTION IN WHOLE OR IN PART IS STRICTLY FORBIDDEN.		

A-3552 B

REVISIONS

SYM	DESCRIPTION	DATE	E.M.N. NO.	DRAFT	CHKD	APPD
X1	IT.1 WAS TE109-1	6.5.64		FB		
X2	ITEM 3 WAS RC20GF104J	6/9/64	X2	A.M.	@	SKR
Ø	ORIGINAL RELEASE FOR PRODUCTION	6/25/64		A.M.		
A	ON B/M: IT.3 WAS "RC20GF470K"	10.1.64	12498	9Z		
B	ON B/M: IT.(3) WAS "RC20GF474K"; IT.(7) WAS "PX104-9-.047" IT.(8) WAS "PX104-1-.047"	12.7.64	13065	9Z		



SUB-ASSY (A 3552-3)

REQ'D.	ITEM	PART NUMBER	DESCRIPTION	SYMBOL
X	10	BS 100	SOLDER, SOFT	
6	9	PT 104-1-.034	INSULATION, SLEEVING	BLK
3	8	PX 104-1-.042	INSULATION, SLEEVING	BLK
10	7	PX 104-9-.042	INSULATION, SLEEVING	V10
15	6	WL 100-5	WIRE, BUSS (#18)	
6	5	WL 100-7	WIRE, BUSS (#22)	
4	4	CE 105-200-15	MINIATURE ELECTROLYTIC CAPACITOR	C944 THRU C947
1	3	RC20GF474J	RESISTOR, FIXED, COMPOSITION	R953
2	2	TE 108-1	STANDOFF, RIVET TYPE	B
10	1	TE 109-2	SPLIT TERMINAL LUG	A

M. GELLMAN		LIST OF MATERIAL	
MATERIAL FOR A-3552-1 G-10 EPOXY, LAMINATED, 3/32 THICK		THE TECHNICAL MATERIEL CORP. MAMARONECK, NEW YORK	
FINISH FOR A-3552-1 SEMI-GLOSS		TITLE TERMINAL BOARD ASSEMBLY	
UNLESS OTHERWISE SPECIFIED DIMENSIONS ARE IN INCHES AND INCLUDE CHEMICALLY APPLIED OR PLATED FINISHES		DRAWN G. Jensen	DATE 3-25-64
DECIMALS .X ± .05 .XX ± .01 .XXX ± .005		CHECKED @	DATE 6-24-64
FRACTIONS ± 1/64 ANGLES ± 0° 30'		ELECT. DES. M. Gellman	DATE 6-29-64
TOLERANCES		MECH. DES.	DATE
		SHEET	
		A 3552 B	
		REV. I.T.R.	