

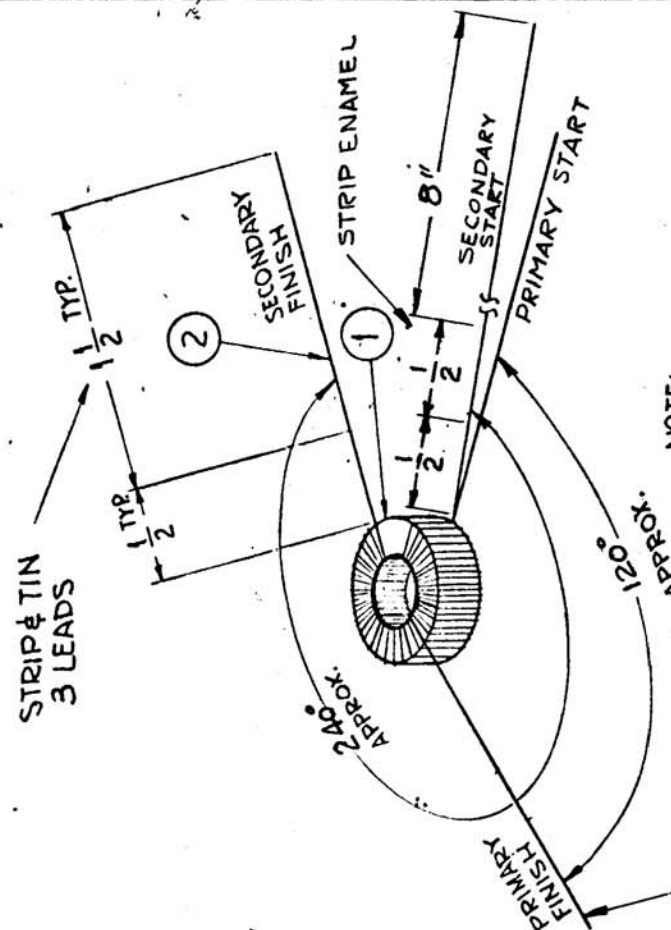
THE CONTENTS OF THIS DRAWING ARE THE EXCLUSIVE PROPERTY OF THE TECHNICAL MATERIEL CORP. ITS UNAUTHORIZED USE OR REPRODUCTION IN WHOLE OR IN PART IS STRICTLY FORBIDDEN.		USED ON		A 3550 A	
REQ. PER UNIT	MODEL	ASSY. NO.	DATE		
1	HFR-1A	A 3551	3-16-64		
1	HFR-2	A 3551	3-16-64		

1. WIND SECONDARY 18 TURNS EQUALLY SPACED OVER THE ANGLE ϕ IN THE DIRECTION SHOWN.
 2. PUSH TURNS TOGETHER OR SPREAD APART AS NEED TO MEET INDUCTANCE SHOWN IN TEST SPECIFICATIONS.
 3. STAKE LEADS SECURELY WITH Q-MA

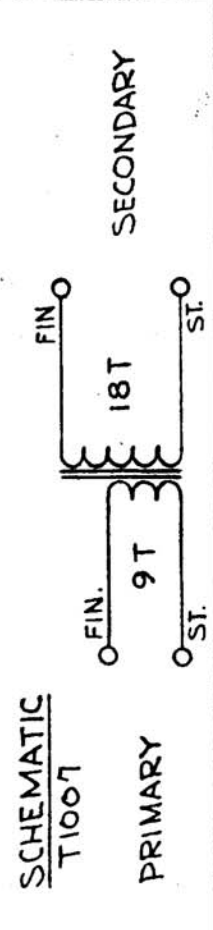
4. WIND PRIMARY 9 TURNS EQUALLY SPACED OVER THE ANGLE ϕ IN THE DIRECTION SHOWN.
 5. STAKE LEADS SECURELY WITH Q-MAX.
 6. BAKE FOR 1/2 HR. AT 215°F TO REMOVE MOISTURE.
 7. COAT COIL & CORE WITH Q-MAX & BAKE 1/2 HR. AT 215°F.

* NOTE: USE TMC COIL STANDARDS FOR TEST REFERENCE.
 — ELECTRICAL SPECS —
 SECONDARY $L = 1.45 \mu h \pm 0.05 \mu h$.
 WITH COIL CLAMPED INTO Q-METER 1/2" AWAY FROM TERMINALS, WITH START END OF COIL TO LOW SIDE.
 $Q = 190$ MIN. AT 7.9 MC
 $Cdist. = 0.9 \mu u f$ (FOR REF. ONLY)

PRIMARY $L = 0.58 \mu h \pm 0.03 \mu h$
 $Q = 90$ MIN AT 12 MC
 $Cdist. = 1.5 \mu u f$ (FOR REF ONLY)



NOTE:
 PRIMARY TO BE WOUND OVER (ON TOP OF) SECONDARY WINDING.



REQ. ITEM	PART NO.	DESCRIPTION	SYMBOL
X 3	GL102	Q-MAX	
X 2	WJ 144-24-9	MAGNET WIRE, SINGLE # 24	
1	CI 127-1	CORE, TOROID	

THE TECHNICAL MATERIEL CORP. MAMARONECK, NEW YORK	
TZ 180 ASSEMBLY	
TRANSFORMER, ANTENNA BAND 6, FREQ. 12-16 MC	
G.D.L.	Checked
Drawn	Checked
Final Approval	Checked
A 3550 A	

SYM	DESCRIPTION	DATE	CH. NO.	DRAFTS	CHECKER	ENG. APP.
A	NOTE ADDED	1-12-67	17575	RME	G.D.L.	
X	ORIGINAL RELEASE FOR PRODUCTION	1-3-64				
X	EXPERIMENTAL RELEASE	3-30-64				

UNLESS OTHERWISE SPECIFIED:
 DIMENSIONS ARE IN INCHES
 TOLERANCES ON
 FRAC. $\pm 1/64$ DEC. $\pm .005$ ANGLES $\pm 1/2^\circ$

SCALE: DO NOT SCALE
 MAXIMUM ALLOWABLE TOLERANCES HAVE BEEN DETERMINED AND ANY DEVIATIONS WILL BE CAUSE FOR REJECTION.
 REMOVE ALL BURRS AND SHARP EDGES