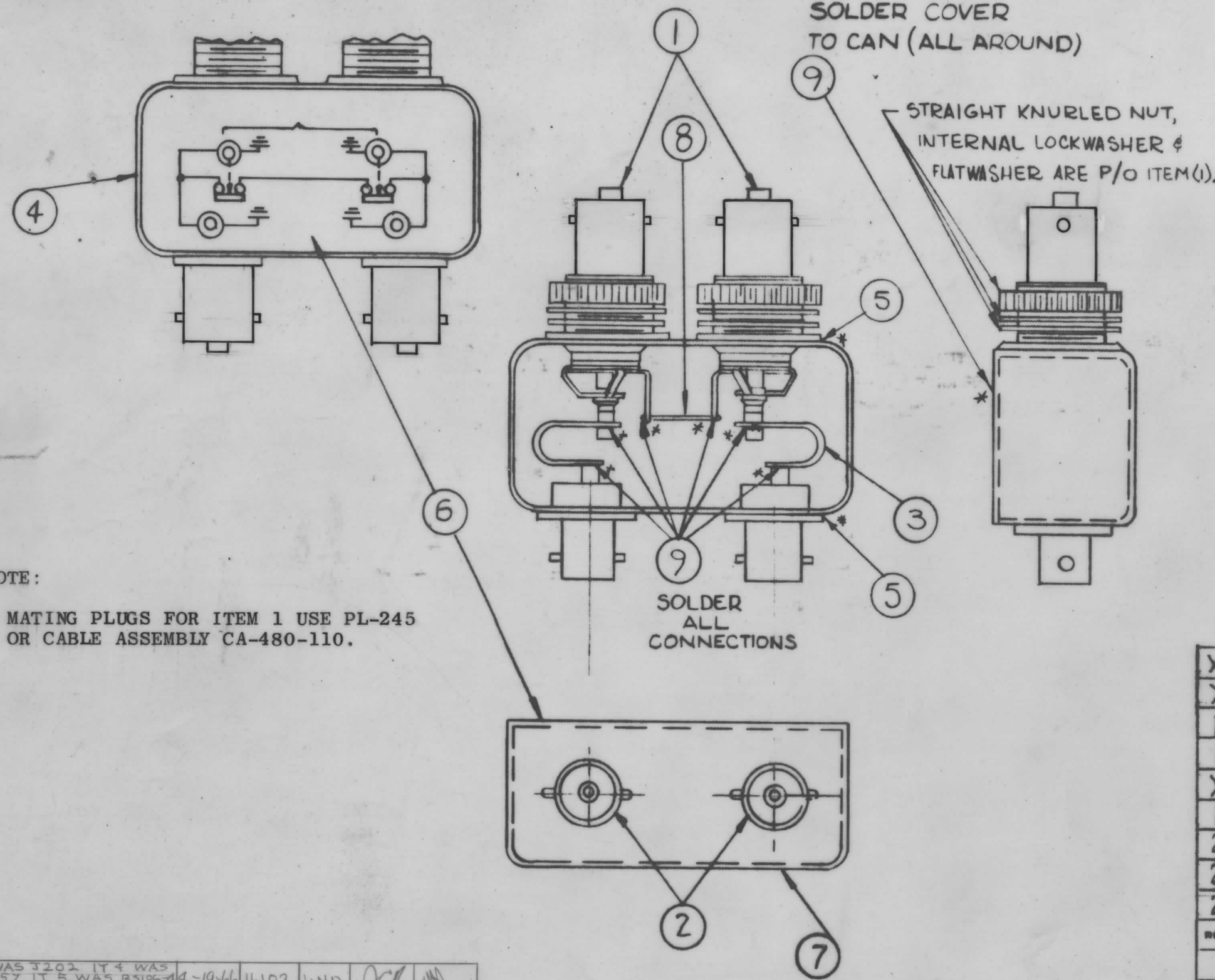


A-3547



NOTES:

1. INDUCTION HEATING EQUIPMENT SET AT:  
AMPERES -  
SECONDS -
2. USE ITEM (5) FOR MOUNTING ITEM (1) AND ITEM (2).
3. USE ITEM (9) FOR MOUNTING ITEM (3) AND ITEM (8) AND FOR SEALING COVER ITEM (4).
4. STRAP ITEM (3) MUST BE KEPT AS FLEXIBLE AS POSSIBLE; DO NOT ALLOW SOLDER TO RUN OVER STRAP. LAY STRAP IN SO THAT IT CANNOT TOUCH CAN OR CONNECTOR BODIES.
5. FINISH AS FOLLOWS:  
S-114 - ZINC CHROMATE PRIMER  
S-115 - T M C SMOOTH GRAY ENAMEL  
(DO NOT PAINT CONNECTOR BODIES)
6. AFFIX ITEM (6) TO FRONT AS SHOWN.
7. AFFIX ITEM (7) TO REAR AS SHOWN.
8. \*DENOTES SOLDER ALL AROUND.

NOTE:  
MATING PLUGS FOR ITEM 1 USE PL-245 OR CABLE ASSEMBLY CA-480-110.

X	9	BS-100-	SOLDER, TIN ALLOY
X	8	WL-100-5	WIRE BUSS, #18 AWG
1	7	NP-224	NAME PLATE, TMC
1	6	NP-225-6	SCHEMATIC DIAGRAM
X	5	BS-100-2	SOLDER, TIN ALLOY
1	4	BX-157-1	CASE & COVER
2	3	MS-1769	STRAP, CONNECTING
2	2	JJ-255	CONNECTOR, RECEPTACLE TYPE "C"
2	1	JJ-309	CONNECTOR, RECEPTACLE SW TYPE

REQ. ITEM	PART NO.	MATERIAL	DESCRIPTION	SYMBOL
MARTINENGO				
THE TECHNICAL MATERIEL CORP. MAMARONECK, NEW YORK				
STOCK SIZE				
SW-348 ASS'Y				
MATERIAL				
SWITCH, R.F. TYPE "C"				
		M. TANTILLO 3-13-64	4/15/64	
		TYPE & TEMPER	HEAT TREAT. SPEC.	FINAL APPROVAL
		FINISH & SPEC. NO.	ELEC. DES. APP.	MECH. DES. APP.

A	IT WAS 3202 IT 4 WAS BX157 IT 5 WAS BS106-4 IT 9 WAS BS100-2	4-19-66	16102	WHO	JCS	MM	
Ø	ORIGINAL RELEASE FOR PRODUCTION	4/15/64					
ISSUE	ITEM	CHANGED FROM	DATE	CM. NO.	DRAFTS	CHECKER	ENG. APP.
TOLERANCES			SCALE: NTS				
DEC. DIM. ±			MAXIMUM ALLOWABLE TOLERANCES HAVE BEEN DETERMINED AND ANY DEVIATIONS WILL BE CAUSE FOR REJECTION.				
PRAC DIM. ±			REMOVE ALL BURRS AND SHARP EDGES				
ANGULAR DIM. ±							

1	SW-348	A-3547	3-13-64
REQ PER UNIT	MODEL	PROJECT NO.	DATE
USED ON			

A-3547 A