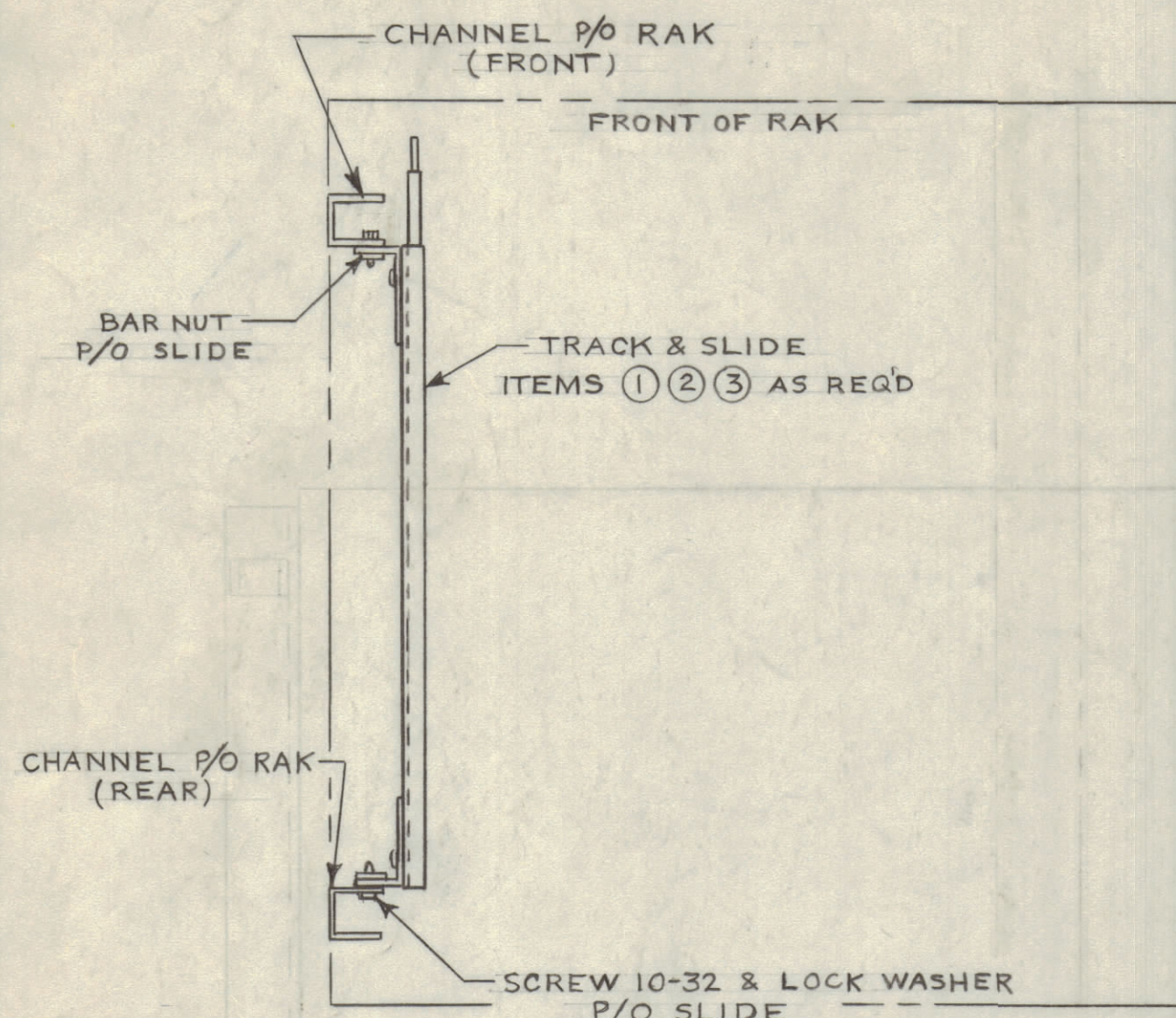
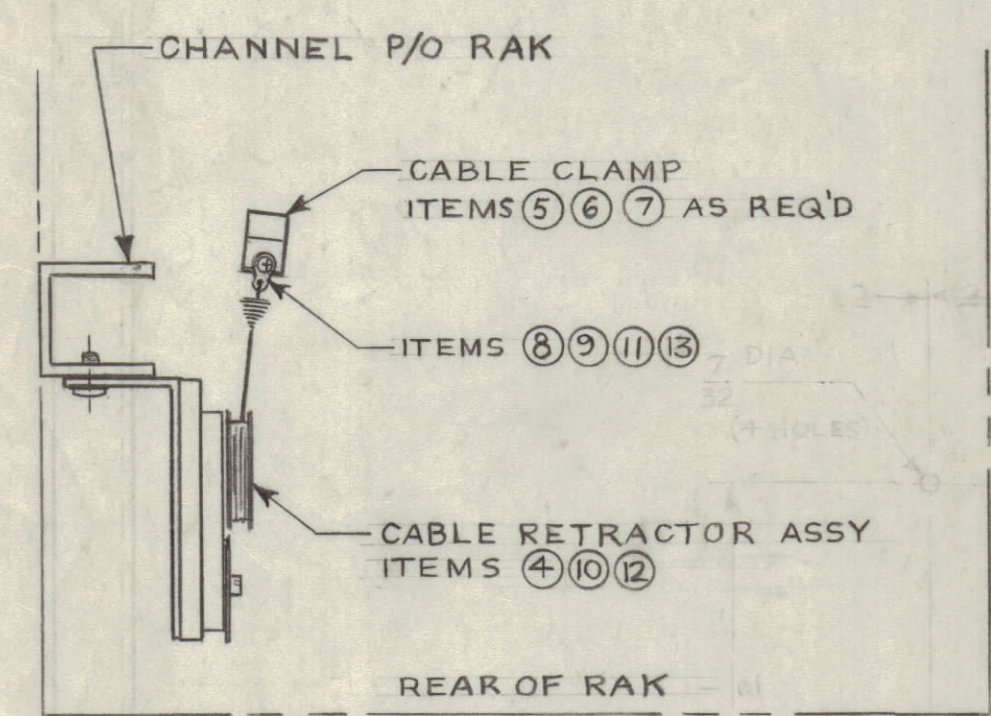


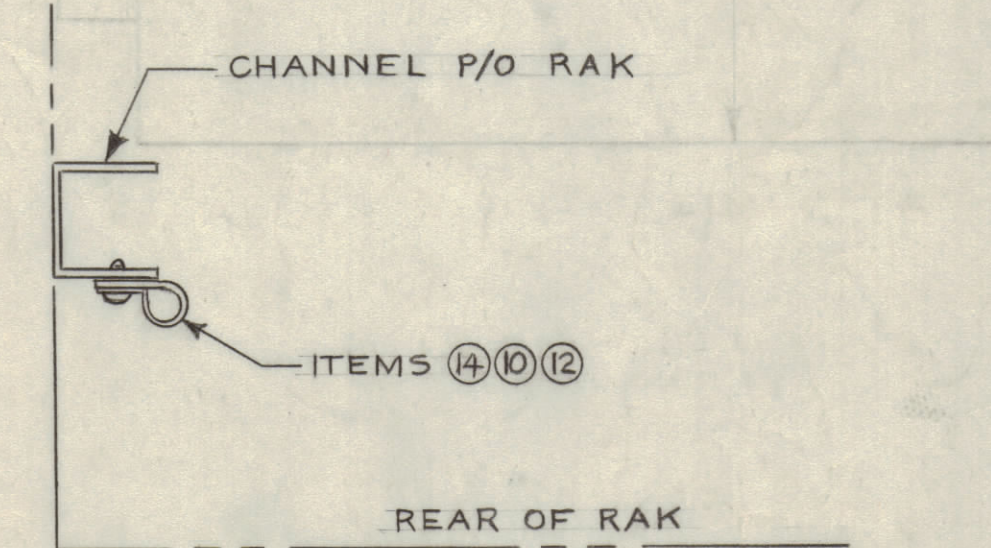
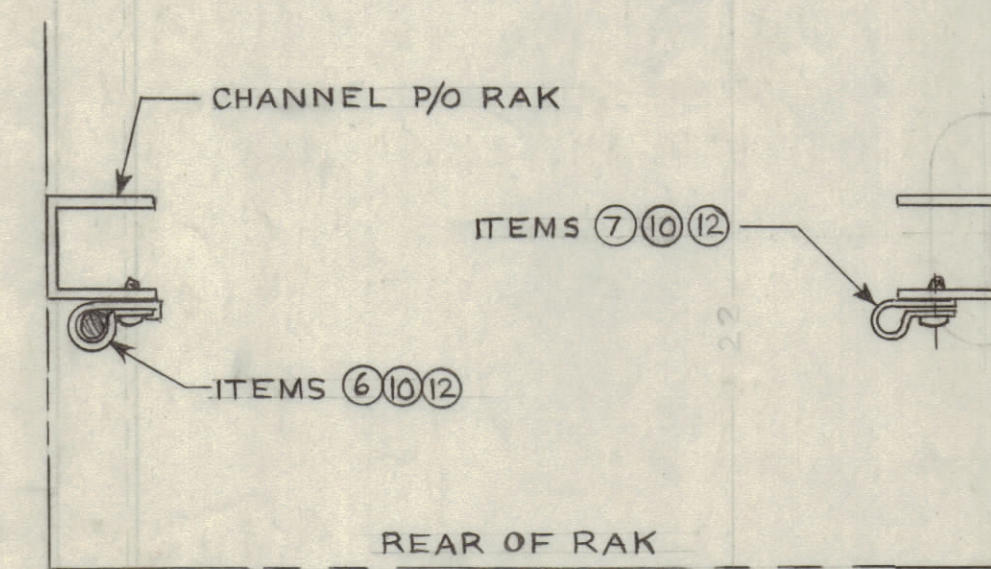
REVISIONS							
ZONE	SYM	DESCRIPTION	DATE	E.M.N. NO.	DRAFT	CHKD	APPRO
	②	ORIGINAL RELEASE FOR PRODUCTION	3-6-65	-1-	DR	AE	



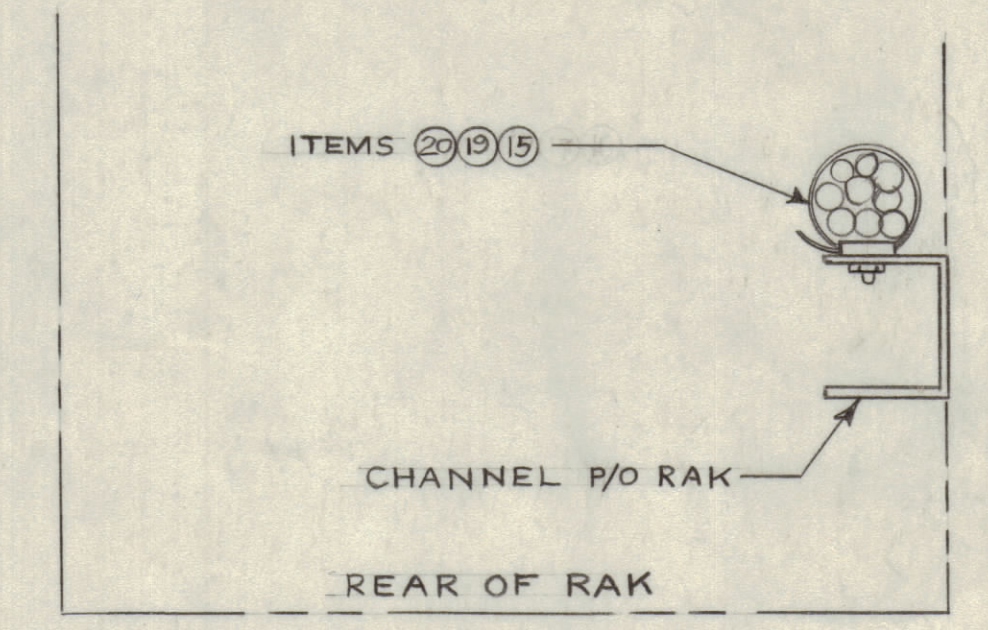
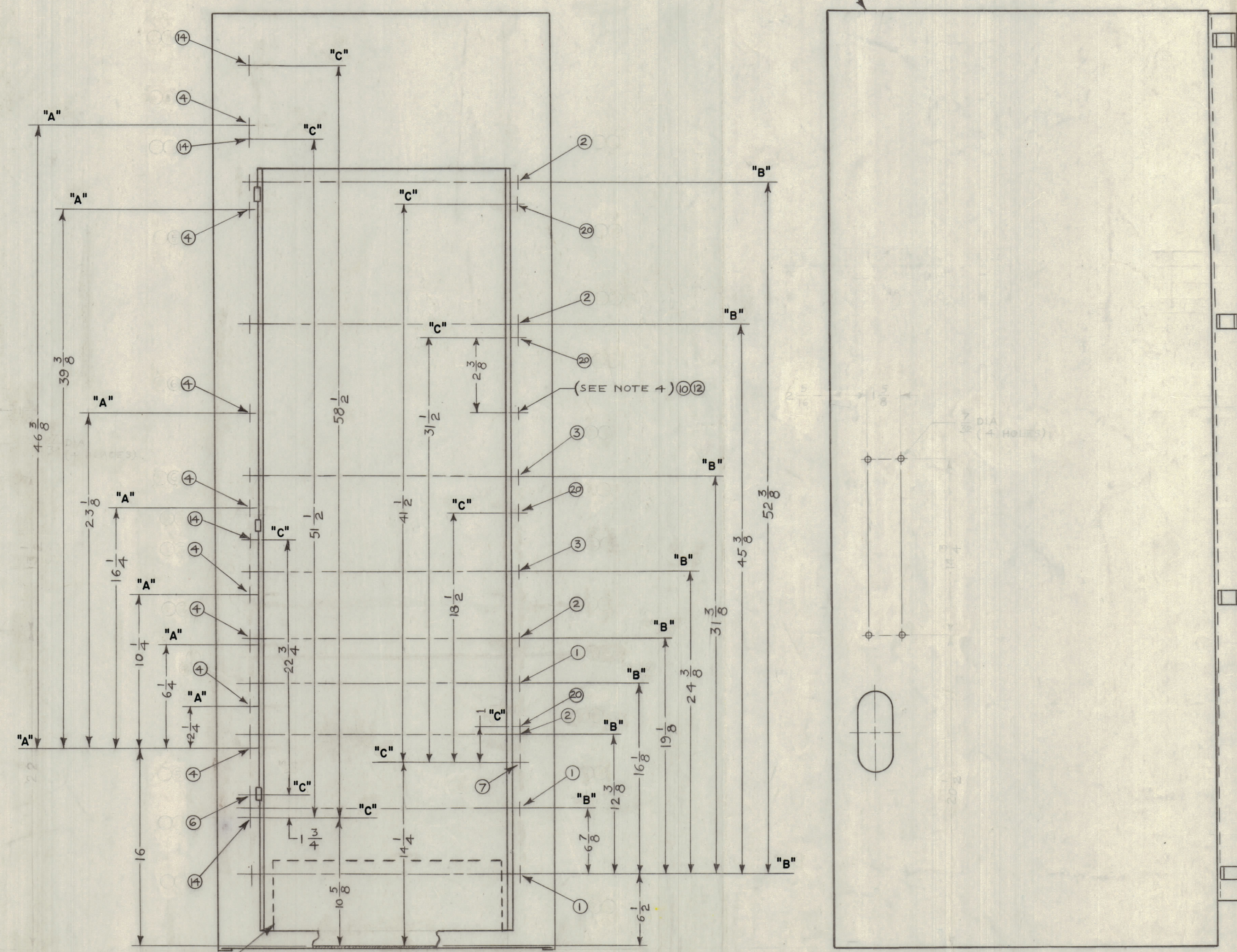
DETAIL OF SLIDE MTG (R.H. SIDE SHOWN)



DETAIL OF CABLE RETRACTOR MTG



DETAIL OF CABLE CLAMP MTGS



DETAIL OF CABLE STRAP MTG

ITEM NO.	USED TO MOUNT	QTY
19&20	27	4
15	19	4
	28	
	27	

REQ'D.	ITEM	PART NUMBER	DESCRIPTION	SYMBOL
	29	GL133	ADHESIVE	
	28	AF103	FILTER, RADIO INTERFERENCE	
	27	A3557	WIRING HARNESS/FILTER ASSEMBLY	
	26	AD103-5	FILTER, AIR CONDITIONING	
	25	CA884-2	CABLE, ASSEMBLY, POWER, AC-3C	
	24	CA884-1	CABLE ASSEMBLY, POWER, AC, 3C	
	23	SFB0256SN3	SCREW, TAPPING, THREAD, CUTTING	
	22	NP103-42	PLATE, IDENTIFICATION-COMMERCIAL	
1	21	A3973	CABINET, ELECTRICAL EQUIPMENT	
4	20	CU-142-1-0	STRAP, CABLE, ADJUST, PLASTIC	
4	19	CU160	RETAINER, CABLE STRAP	
1	18	AX-390	FAN ASSEMBLY	
	17	DELETED	WASHER, LOCK, EXTERNAL, TOOTH	
	16	DELETED	WASHER, LOCK, EXTERNAL, TOOTH	
4	15	NT137-0832	SPRING, RETRACTING, ASSEMBLY	
4	14	CU-131-4	CLAMP, CABLE	
8	13	NTH0632BN8	NUT, HEXAGON	
24	12	LWE10MRN	WASHER, LOCK, EXTERNAL, TOOTH	
	11	DELETED	WASHER, LOCK, EXTERNAL, TOOTH	
24	10	SCBP1032BN8	SCREW, MACHINE	
8	9	SCBP0632BN4	SCREW, MACHINE	
8	8	TE-104-2	TERMINAL, LOCKING	
3	7	CU-131-5	CLAMP, CABLE	
2	6	CU-131-6	CLAMP, CABLE	
3	5	CU-131-8	CLAMP, CABLE	
8	4	A-3517	SPRING, RETRACTING, ASSEMBLY	
6	3	TK-115-18	TRACK & SLIDE SET	
1	2	CA696-1	CABLE ASSEMBLY, POWER, AC-3C	
3	1	TK-114-18	TRACKS & SLIDE SET	

- NOTES:**
 1. "A" INDICATES MOUNTING CENTER LINE OF RETRACTING ASSYS.
 2. "B" INDICATES MOUNTING CENTER LINE OF TRACK & SLIDE SETS.
 3. "C" INDICATES MOUNTING CENTER LINE OF CABLE CLAMPS & STRAPS.
 4. AT POINT INDICATED, SAND DOWN FINISH TO BARE METAL & FASTEN GROUND LUG P/O A-3469 CABLE TO CHANNEL OF RAK.

LIST OF MATERIAL					
MATERIAL	FINISH	THE TECHNICAL MATERIEL CORP. MAMARONECK, NEW YORK			
		TITLE	DATE	FINAL APPROVAL	DATE
		RAK-35 A FINAL ASSEMBLY	1-8-65		
		UNLESS OTHERWISE SPECIFIED DIMENSIONS ARE IN INCHES AND INCLUDE CHEMICALLY APPLIED OR PLATED FINISHES	CHECKED		
		THE CONTENTS OF THIS DRAWING ARE THE EXCLUSIVE PROPERTY OF THE TECHNICAL MATERIEL CORP. ITS UNAUTHORIZED USE OR REPRODUCTION IN WHOLE OR IN PART IS STRICTLY FORBIDDEN.	ELECT. DES.		
		DECIMALS ±.05 XX ±.01 XXX ±.005	MECH. DES.		
		FRACTIONS ± 1/64 ANGLES ± 30'	DATE	A-3527	
		TOLERANCES ±.005	REV. LTR.		

NOTES

A3527