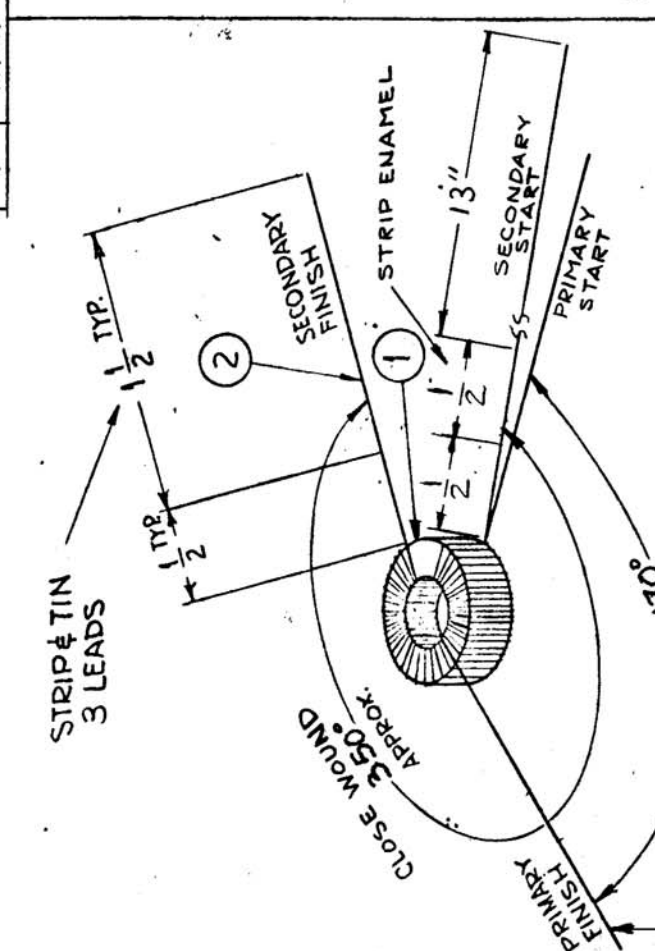


THE CONTENTS OF THIS DRAWING ARE THE EXCLUSIVE PROPERTY OF THE TECHNICAL MATERIEL CORP. ITS UNAUTHORIZED USE OR REPRODUCTION IN WHOLE OR IN PART IS STRICTLY FORBIDDEN.		USED ON		DATE	
REQ. PER UNIT	MODEL	ASSY. NO.	DATE		
1	HR-1A	A 3526	3-9-64		A 3525 B
1	HR-2	A 3526	3-9-64		

1. WIND SECONDARY APPROX. 38 TURNS EQUALLY SPACED OVER THE ANGLE  $\phi$  IN THE DIRECTION SHOWN.
2. REMOVE OR ADD TURNS TO MEET INDUCTANCE.
3. STAKE LEADS SECURELY WITH G-MAX.
4. WIND PRIMARY 15 TURNS EQUALLY SPACED OVER THE ANGLE  $\phi$  IN THE DIRECTION SHOWN.
5. STAKE LEADS SECURELY WITH G-MAX.
6. BAKE FOR 1/2 HR. AT 215°F TO REMOVE MOISTURE.
7. COAT COIL & CORE WITH G-MAX & BAKE 1/2 HR. AT 215°F.
- \* NOTE: USE TMC COIL STANDARDS FOR TEST REFERENCE.
- ELECTRICAL SPECS —
- SECONDARY L = 6.07  $\mu$ h  $\pm$  0.15  $\mu$ h.
- WITH COIL CLAMPED INTO Q-METER 1/2" AWAY FROM TERMINALS, WITH START. END OF COIL TO LOW SIDE.
- Q = 210 MIN. AT 7.0 MC
- C DISTRIB. = 1.6  $\mu$ mf (FOR REF. ONLY)
- PRIMARY L = 1.36  $\mu$ h  $\pm$  0.07  $\mu$ h
- C DISTRIB = 6.7  $\mu$ mf (FOR REF. ONLY)
- Q = 60 MIN. AT 7.0 MC



REQ. ITEM	PART NO.	DESCRIPTION	SYMB L
X 3	GL102	G-MAX	
X 2	WL 141-24-9	MAGNET WIRE, SINGLE # 24	
1	CI 127-1	CORE, TOROID	

STOCK SIZE

MATERIAL

TYPE & TEMPER

HEAT TREAT. SPEC.

FINISH & SPEC. NO.

THE TECHNICAL MATERIEL CORP.  
MAMARONECK, NEW YORK

TZ 177 ASSY

TRANSFORMER, ANTENNA BAN#3, FREQ 4-6 MC

G.D.L. @

FINAL APPROVAL

A 3525 B

NOTE: PRIMARY TO BE WOUND OVER (ON TOP OF) SECONDARY WINDING.

SHEMATIC

T1004

PRIMARY 15T

SECONDARY 38T

FIN. ST.

SYMB	DESCRIPTION	DATE	CH. NO.	DRAFTS	CHECKER	ENG. APP.
B	NOTE ADDED	1-12-67	17575	RME	G.D.L.	
A	SEC "Q" WAS 215, PRI "Q" WAS 65 ORIGINAL RELEASE FOR PRODUCTION	11-21-66	17299	RME		
X	EXPERIMENTAL RELEASE	8-13-64				
		3-26-64				

SCALE: DO NOT SCALE

UNLESS OTHERWISE SPECIFIED: DIMENSIONS ARE IN INCHES TOLERANCES ON FRAC.  $\pm$  1/64 DEC.  $\pm$  .005 ANGLES  $\pm$  1/20

MAXIMUM ALLOWABLE TOLERANCES HAVE BEEN DETERMINED AND ANY DEVIATIONS WILL BE CAUSE FOR REJECTI N. REMOVE ALL BURRS AND SHARP EDGES