

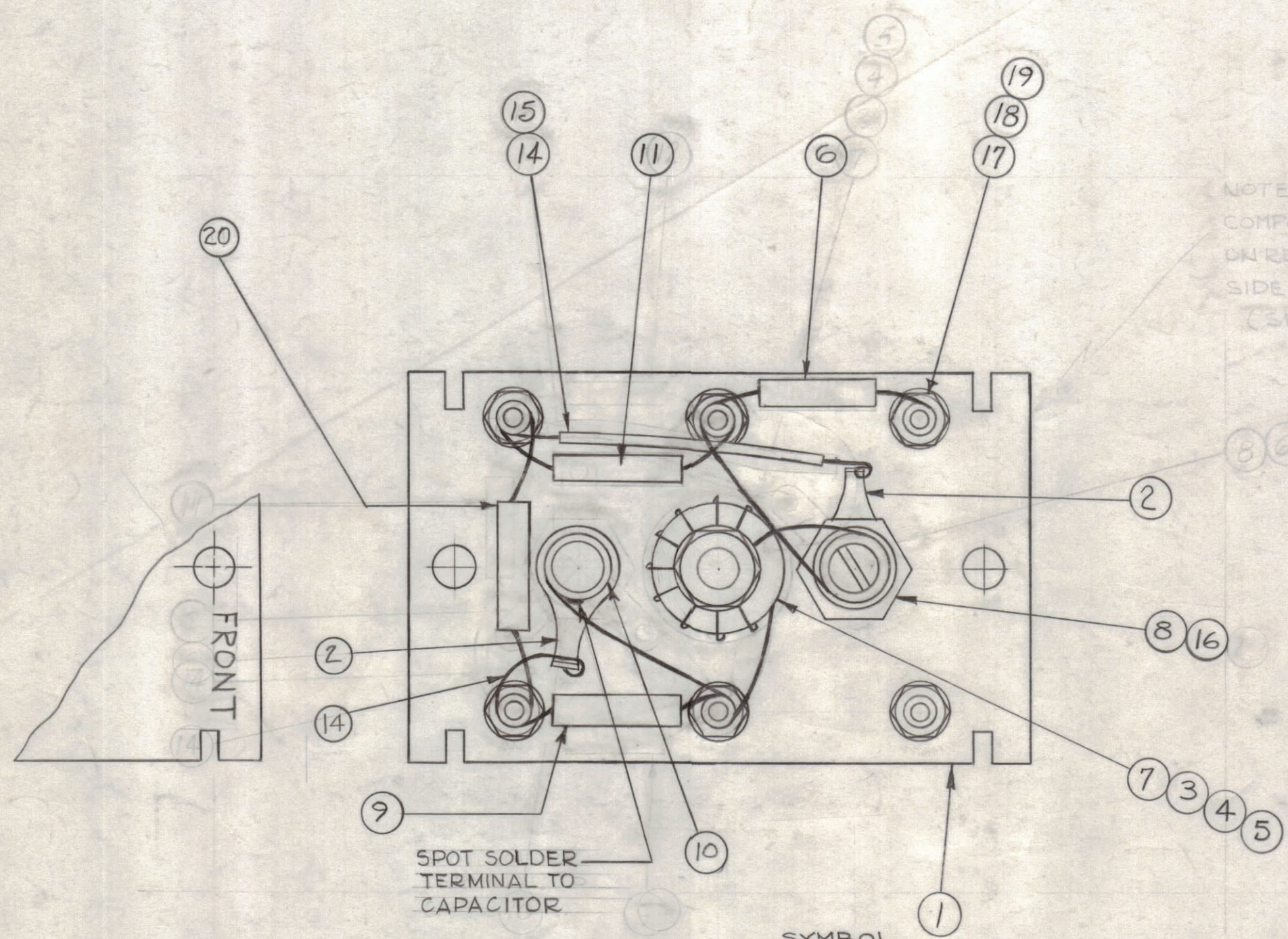
PROCEDURE FOR WINDING TRIM COIL

- 1 ~ PUSH ITEM 16 SLEEVING ON COIL FORM AS SHOWN.
- 2 ~ WIND LONG LEAD FROM TOROID CLOCKWISE 3 TURNS TIGHTLY AGAINST SLEEVING.
- 3 ~ STRIP ENAMEL FROM END NEAR TERMINAL WRAP & SOLDER SECURELY TO TERMINAL SHOWN.
- 4 ~ COAT WITH GLI02 Q-MAX. TO HOLD TURNS IN PLACE.

NOTICE TO PERSONS RECEIVING THIS DRAWING

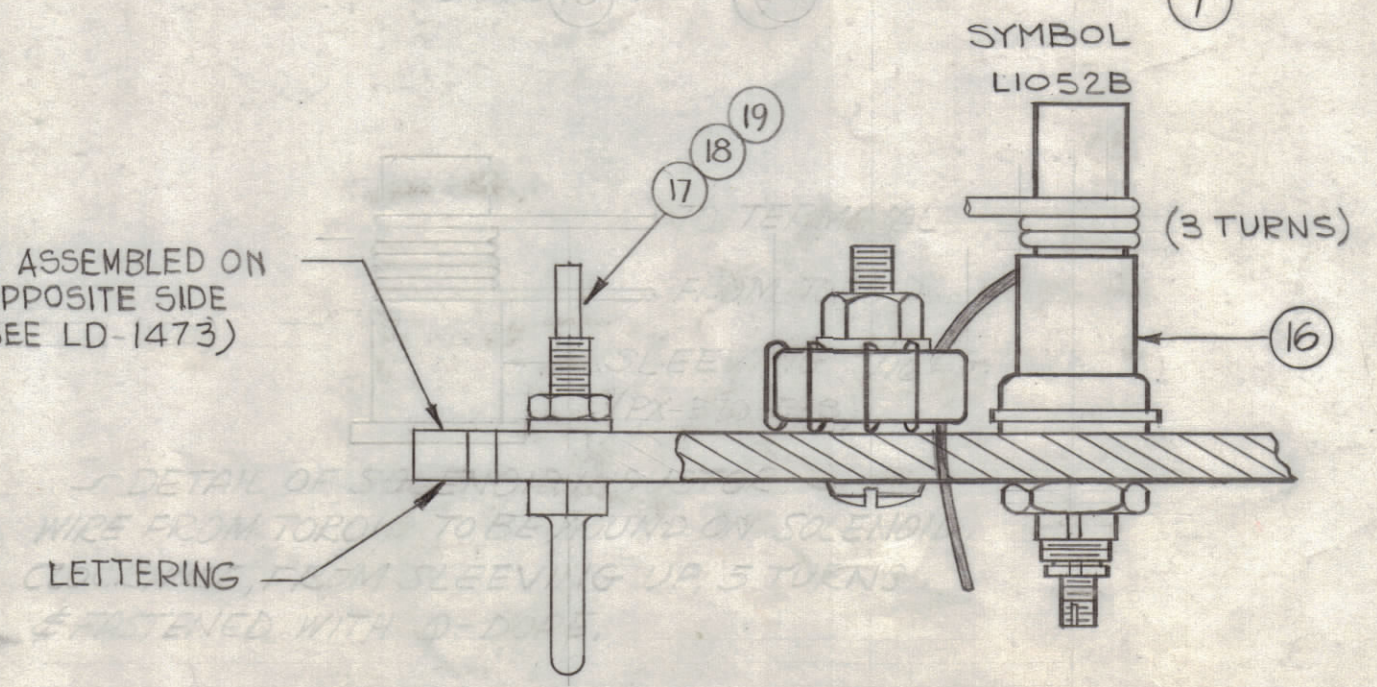
THE TECHNICAL MATERIEL CORPORATION claims proprietary right in the material disclosed hereon. This drawing is issued in confidence for engineering information only and may not be reproduced or used to manufacture anything shown hereon without permission from THE TECHNICAL MATERIEL CORPORATION to the user. This drawing is loaned for mutual assistance and is subject to recall at any time.

Property of:
THE TECHNICAL MATERIEL CORPORATION
MAMARONECK, NEW YORK



NOTE:
COMPONENTS TO BE ASSEMBLED ON REAR OF BOARD OPPOSITE SIDE OF LETTERING.
(SEE LD-1473)

NOTE:
COMPONENTS TO BE ASSEMBLED ON REAR OF BOARD, OPPOSITE SIDE OF LETTERING. (SEE LD-1473)



REQ.	ITEM	PART NO.	DESCRIPTION	SYMBOL
1	20	CM15C750G03	CAPACITOR, 75 MMF	C1191
6	19	NTH0440BNG	NUT, HEX	
6	18	LWS04MRN	WASHER, LOCK, SPRING TYPE	
6	17	TE-191-1	TERMINAL	
X	16	PX-370-2-8	INSULATION, SLEEVING, 5/16 LG.	
X	15	PX-104-1-.034	INSULATION, SLEEVING #20	
X	14	WL-100-6	WIRE, BUSS #20 AWG	
X	13	BS-100	SOLDER, SOFT	
X	12	GL-102	Q-MAX	
1	11	CM15F151G03	CAPACITOR, 150 MMF	C1190
1	10	CV-108-2	CAPACITOR, VARIABLE .9-12	C1193
1	9	CM15C300J03	CAPACITOR, 30MMF	C1192
1	8	CF-134-5-0	COIL, FORM,	
1	7	A-3505	COIL, RF, ASSEMBLY	L1052A
1	6	CC21SLO30C	CAPACITOR, 3 MMF	C1194
1	5	FW-101-1	WASHER, FLAT, NYLON	
1	4	NT-137-0632	NUT, NYLON	
1	3	SC-143-0632-B-10	SCREW, NYLON	
2	2	TE-104-4	LUG, GROUND	
1	1	LD-1473/PX-650	TERMINAL BOARD OSC. (LETTERED)	A-1003

B	03 ADDED ITEMS 9, 11 & 20	2-24-67	17841	L.A.K.			
A	IT. 10 P/N WAS CV110-2	1-22-65	13337				
O	ORIGINAL RELEASE FOR PRODUCTION	8-13-64					
X	EXPERIMENTAL RELEASE	3-26-64					
SYM	ZONE	DESCRIPTION	DATE	CH. NO.	DRAFTS	CHECKER	ENG. APP.
UNLESS OTHERWISE SPECIFIED:			SCALE 2 : 1				
DIMENSIONS ARE IN INCHES			MAXIMUM ALLOWABLE TOLERANCES HAVE BEEN DETERMINED AND ANY DEVIATIONS WILL BE CAUSE FOR REJECTION. REMOVE ALL BURRS & SHARP EDGES				
TOLERANCES ON							
FRACTIONS ± 1/64			DECIMALS ± .005				
			ANGLES ± 1/2°				

1	HFR-2				
1	HFR-1A			2-25-64	
REQ. PER UNIT	MODEL	SECTION	ASS'Y. NO.	DATE	USED ON

REQ.	ITEM	PART NO.	DESCRIPTION	SYMBOL
THE TECHNICAL MATERIEL CORP. MAMARONECK, NEW YORK				
STOCK SIZE				
MATERIAL				
G.D.L @				
TYPE & TEMPER			HEAT TREAT. SPEC.	
FINISH & SPEC. NO.			ELEC. DES. APP. MECH. DES. APP.	

AX 489 ASS'Y
(TERMINAL BOARD, OSC. BAND #8)
DRAWN: [Signature] CHECKED: [Signature] FINAL APPROVAL: [Signature]
A-3506 B