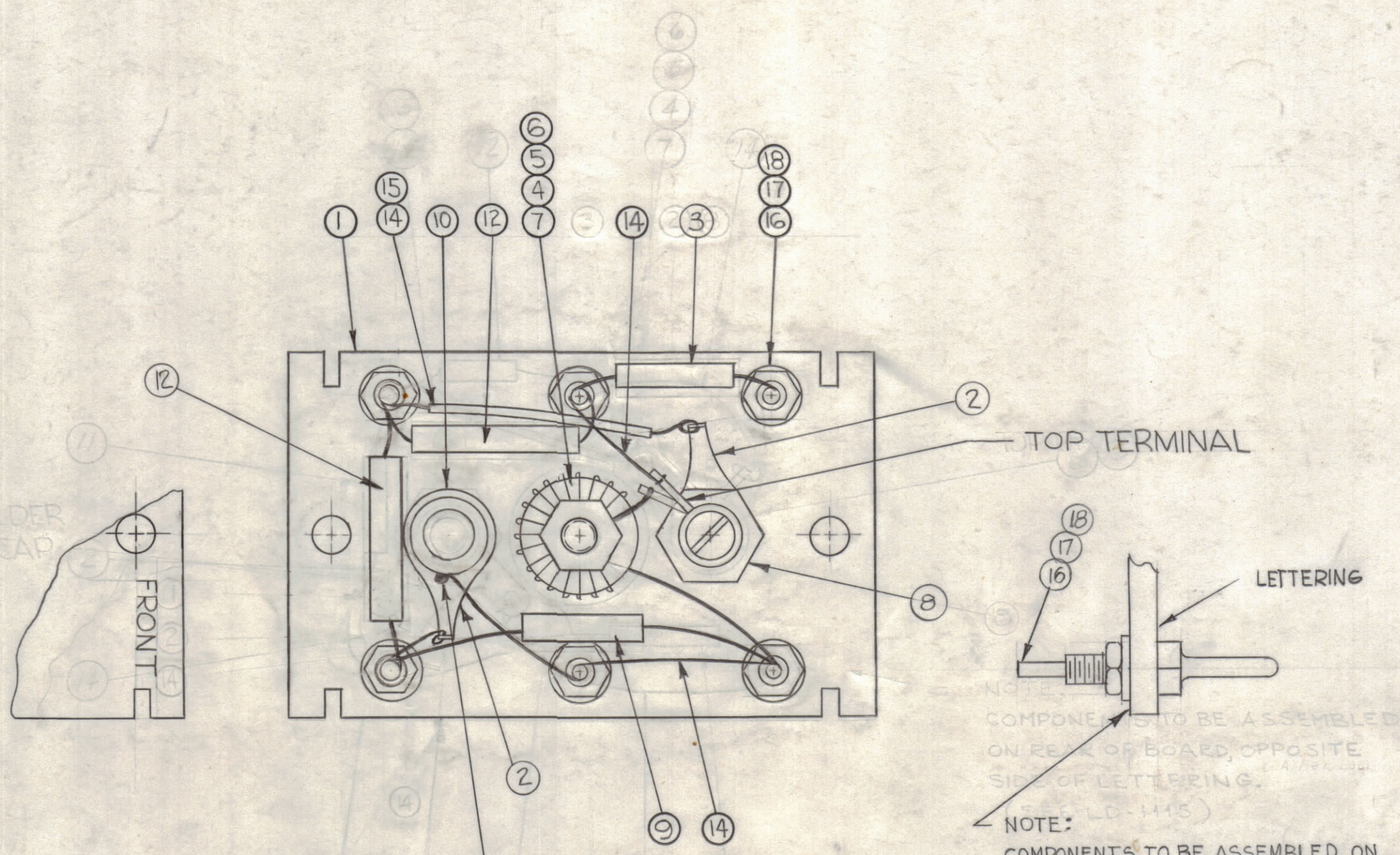


NOTICE TO PERSONS RECEIVING THIS DRAWING  
 THE TECHNICAL MATERIEL CORPORATION claims proprietary right in the material disclosed hereon. This drawing is issued in confidence for engineering information only and may not be reproduced or used to manufacture anything shown hereon without permission from THE TECHNICAL MATERIEL CORPORATION to the user. This drawing is loaned for mutual assistance and is subject to recall at any time.  
 Property of:  
 THE TECHNICAL MATERIEL CORPORATION  
 MAMARONECK, NEW YORK



NOTE:  
 COMPONENTS TO BE ASSEMBLED ON REAR OF BOARD, OPPOSITE SIDE OF LETTERING. (SEE LD-1468)  
 NOTE:  
 COMPONENTS TO BE ASSEMBLED ON REAR OF BOARD, OPPOSITE SIDE OF LETTERING. (SEE LD-1468)

6	18	NTH0440BNG	NUT, HEXAGON	
6	17	LW504MRN	WASHER, LOCK, SPRING TYPE	
6	16	TE-191-1	TERMINAL	
X	15	PX 104-1-034	INSULATION, SLEEVING #20	
X	14	WL 100-6	WIRE, BUSS #20 AWG	
X	13	BS-100	SOLDER, SOFT	
2	12	CM20F681G03	CAPACITOR, 680 MMF	C1090 C1091
1	10	CV-108-3	CAPACITOR, VARIABLE .9-18	C1093
1	9	CM15F910G03	CAPACITOR, 91 MMF	C1092
1	8	AC 169	COIL, R.F., TUNNED	L1053
1	7	CL 332	COIL, R.F., ASSEMBLY	L1027
1	6	FW-101-1	WASHER, FLAT., NYLON	
1	5	NT-137-0632	NUT, NYLON	
1	4	SC-143-0632-B-10	SCREW, NYLON	
1	3	CM15C470J03	CAPACITOR 47MMF	C1094
2	2	TE-104-4	LUG, GROUND	
1	1	LD-1468/PX 650	TERMINAL BOARD, OSC. (LETTERED)	

REQ. ITEM	PART NO.	DESCRIPTION	SYMBOL
ANGER			
THE TECHNICAL MATERIEL CORP. MAMARONECK, NEW YORK			
STOCK SIZE			
AX 484 ASSY			
(TERMINAL BOARD, OSC. BAND #3)			
MATERIAL			
G.D.L. @ RAL			
DRAWN CHECKED FINAL APPROVAL			
Jager			
TYPE & TEMPER HEAT TREAT. SPEC.			
FINISH & SPEC. NO.			
ELEC. DES. APP. MECH. DES. APP. SHEET OF			
A 3496 B			

B	ADD -03 TO IT'S 3,9,12 P/N	3-1-67	17852	RME		
A	IT. 10 P/N WAS CV110-3	1-22-65	13337	SL		
Ø	ORIGINAL RELEASE FOR PRODUCTION	8-13-64		Behu		
X	EXPERIMENTAL RELEASE	3-26-64		Behu		
SYM	ZONE	DESCRIPTION	DATE	CH. NO.	DRAFTS	CHECKER
UNLESS OTHERWISE SPECIFIED:			SCALE 2:1			
DIMENSIONS ARE IN INCHES			MAXIMUM ALLOWABLE TOLERANCES HAVE BEEN DETERMINED AND ANY DEVIATIONS WILL BE CAUSE FOR REJECTION. REMOVE ALL BURRS & SHARP EDGES			
TOLERANCES ON FRACTIONS ± 1/64 DECIMALS ± .005 ANGLES ± 1/2°						

1	HFR-2				
1	HFR-1A			2-24-64	
REQ. PER UNIT	MODEL	SECTION	ASSY. NO.	DATE	USED ON