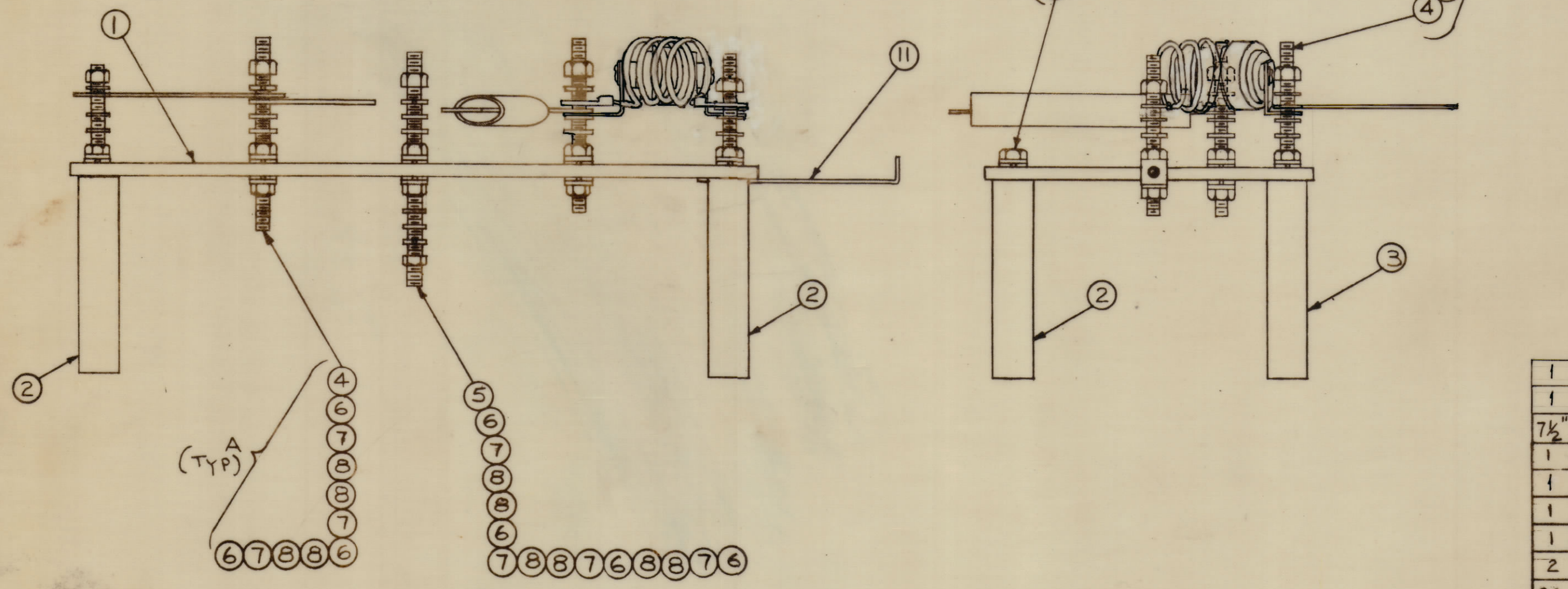
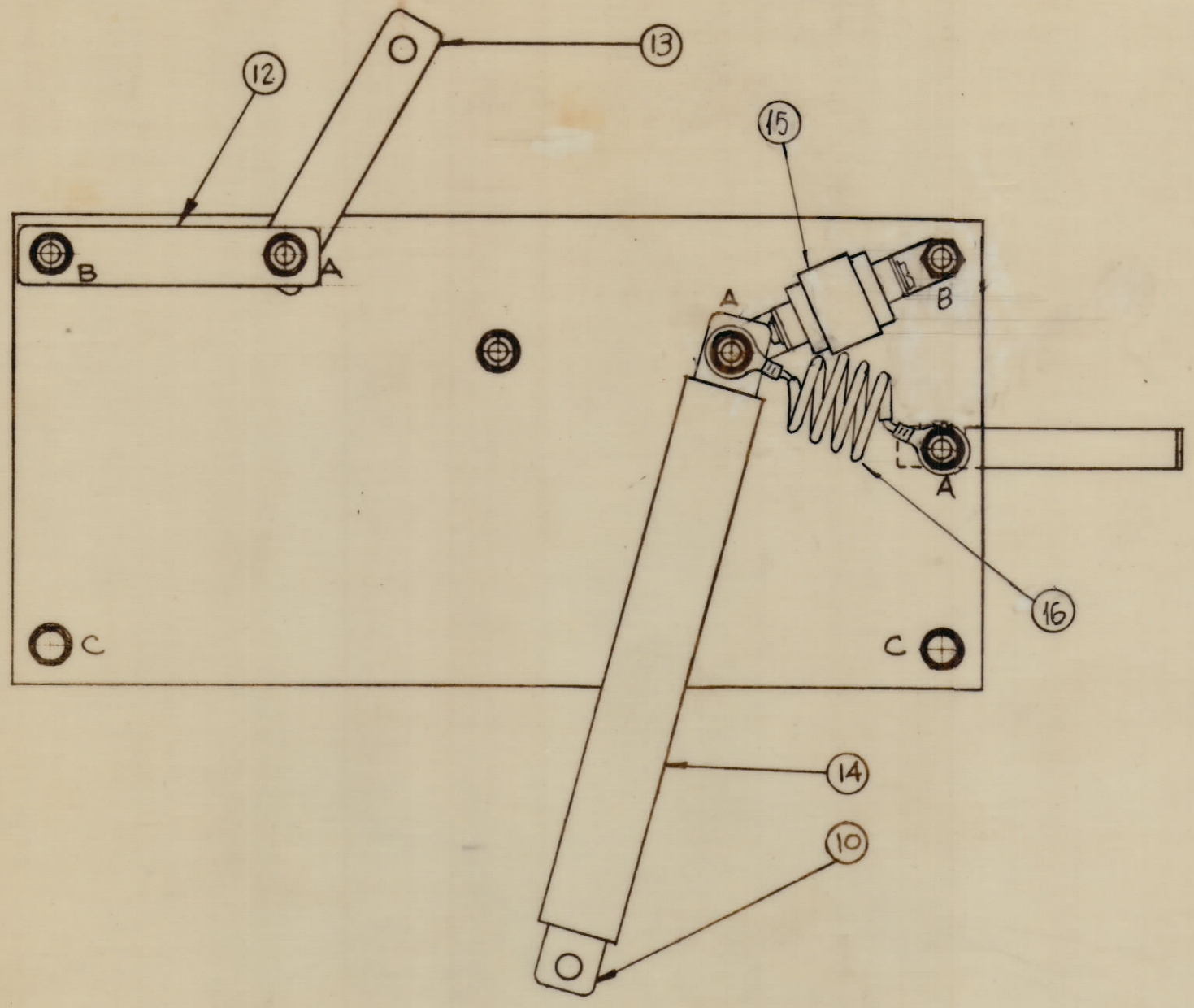


NOTICE TO PERSONS RECEIVING THIS DRAWING

THE TECHNICAL MATERIEL CORPORATION claims proprietary right in the material disclosed hereon. This drawing is issued in confidence for engineering information only and may not be reproduced or used to manufacture anything shown hereon without permission from THE TECHNICAL MATERIEL CORPORATION to the user. This drawing is loaned for mutual assistance and is subject to recall at any time.

Property of:
THE TECHNICAL MATERIEL CORPORATION
MAMARONECK, NEW YORK



1	16	CL 326	COIL, ELECTRICAL	L7318
1	15	A 3470	CAPACITOR ASSY	
7 1/2	14	PX 370-6-7	INSULATION, SLEEVING, TEFLON	
1	13	MS 2479	STRAP, ANTENNA TUNER INPUT	
1	12	MS 2478	STRAP, SWITCHING	
1	11	MS 2477	STRAP, UNBALANCED OUTPUT	
1	10	MS 2476	STRAP, DIRECTIONAL COUPLER INPUT	
2	9	SCHH2520BN12	SCREW, MACHINE	
26	8	FW25HBN	WASHER, FLAT	
19	7	LWS25MRN	LOCKWASHER, SPRING TYPE	
17	6	NTH2520BN14	NUT, HEX	
1	5	SM2520BN2.500	ROD, THREADED	
5	4	SM2520BN1.500	ROD, THREADED	
2	3	TE2520AE41R	SPACER, THREADED	
2	2	TE2520GR41R	SPACER, THREADED	
1	1	PX 597/LD-854	BOARD, ANTENNA SWITCHING	

SYM	ZONE	DESCRIPTION	DATE	CH. NO.	DRAFTS	CHECKER	ENG. APP.
A		DELETED C7333 SYMONITEM 15	3-1-67	17874	RME		
O.		ORIGINAL RELEASE FOR PRODUCTION	3-3-64		A.M.		
		UNLESS OTHERWISE SPECIFIED:	SCALE 1/2 DO NOT SCALE				
		DIMENSIONS ARE IN INCHES	MAXIMUM ALLOWABLE TOLERANCES HAVE BEEN DETERMINED AND ANY DEVIATIONS WILL BE CAUSE FOR REJECTION. REMOVE ALL BURRS & SHARP EDGES				
		TOLERANCES ON FRACTIONS ± 1/64	DECIMALS ± .005		ANGLES ± 1/2°		
		CODE A					

REQ. PER UNIT	MODEL	SECTION	ASSY. NO.	DATE
1	KIT-126			
USED ON				

REQ. ITEM	PART NO.	F. BUDETTI	DESCRIPTION	SYMBOL
		THE TECHNICAL MATERIEL CORP. MAMARONECK, NEW YORK		
		SWITCHING BOARD ASSY		
		MATERIAL		
		TYPE & TEMPER. HEAT TREAT. SPEC.		
		FINISH & SPEC. NO.		
		DRAWN	CHECKED	FINAL APPROVAL
		2B	LB	A 3481 A
		ELEC. DES. APP.	MECH. DES. APP.	SHEET OF
				1