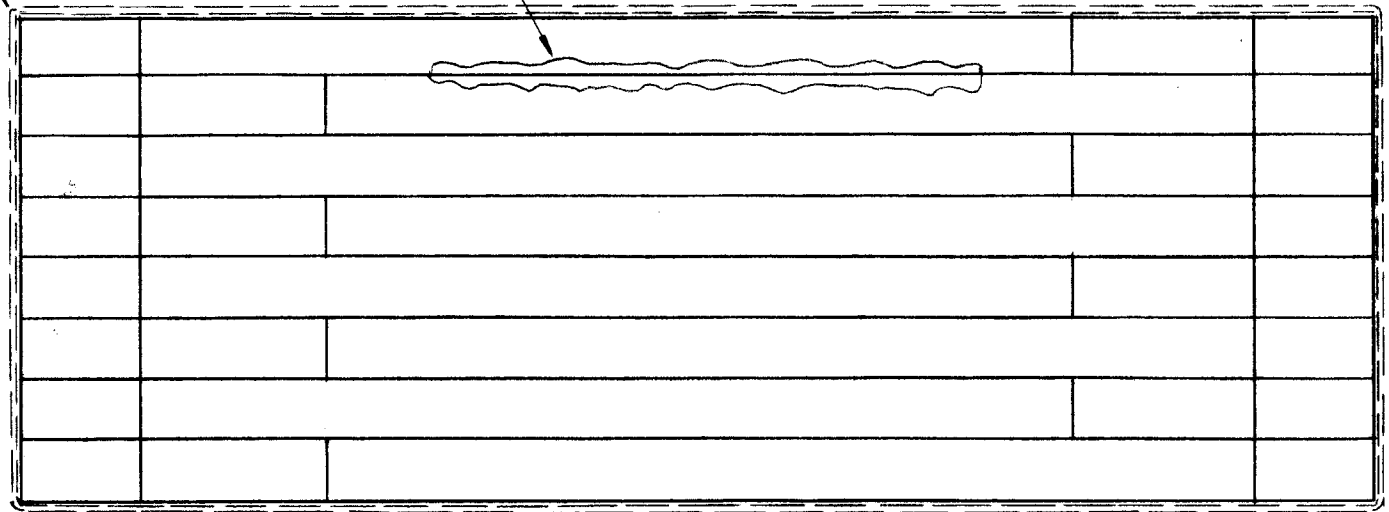


4

5 TYP. BETWEEN ALL CORES.



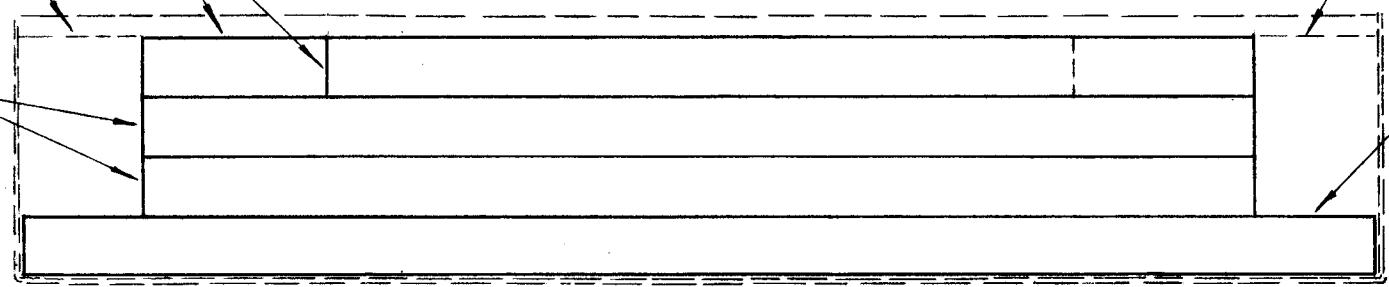
SEE NOTE-1

3

SEE NOTE-1

2

1



A-3472

REVISIONS

SYM	DESCRIPTION	DATE	E.M.N. NO.	DRAFT	CHKD	APPD
0	ORIGINAL RELEASE FOR PRODUCTION	4-6-64	1			

REQ'D.	ITEM	PART NUMBER	DESCRIPTION	SYMBOL
X	5	GL-132	ADHESIVE (EPOXY)	
1	4	PX-778	BOX, CORE MOULDING	
8	3	CI-112-Q2-9R625L	CORE, FERRAMIC	
16	2	CI-112-Q2-11R5L	CORE, FERRAMIC	
8	1	CI-112-Q2-14L	CORE, FERRAMIC	

1~ FOR PROPER SPACING USE WD-136
 2~ CLAMP BOX TO KEEP ITS SHAPE.
 3~ REMOVE CLAMP AND SPACERS AFTER ASS'Y SETS.

NOTES

1	TR-179	A-3143
Q'TY./UNIT	MODEL USED ON	ASS'Y. NO.
SCALE 1/2"=1"	CODE A	

THE CONTENTS OF THIS DRAWING ARE THE EXCLUSIVE PROPERTY OF THE TECHNICAL MATERIEL CORP. ITS UNAUTHORIZED USE OR REPRODUCTION IN WHOLE OR IN PART IS STRICTLY FORBIDDEN.

F. BUDETTI LIST OF MATERIAL

MATERIAL: *[Signature]*

FINISH: *[Signature]*

THE TECHNICAL MATERIEL CORP.
MAMARONECK, NEW YORK

TITLE: CORE ASS'Y (BOTTOM)

DRAWN: SRG	DATE: 1-28-64	FINAL APPROVAL: <i>[Signature]</i>	DATE: 4/22/64
CHECKED: <i>[Signature]</i>	DATE:		
ELECT. DES: <i>[Signature]</i>	DATE: 3/9/64	A-3472	○
MECH. DES: <i>[Signature]</i>	DATE:		

UNLESS OTHERWISE SPECIFIED DIMENSIONS ARE IN INCHES AND INCLUDE CHEMICALLY APPLIED OR PLATED FINISHES

DECIMALS .X ± .05 .XX ± .01 .XXX ± .005	TOLERANCES	FRACTIONS ± 1/64 ANGLES ± 0° 30'
--	------------	---

SHEET

REV. LTR.