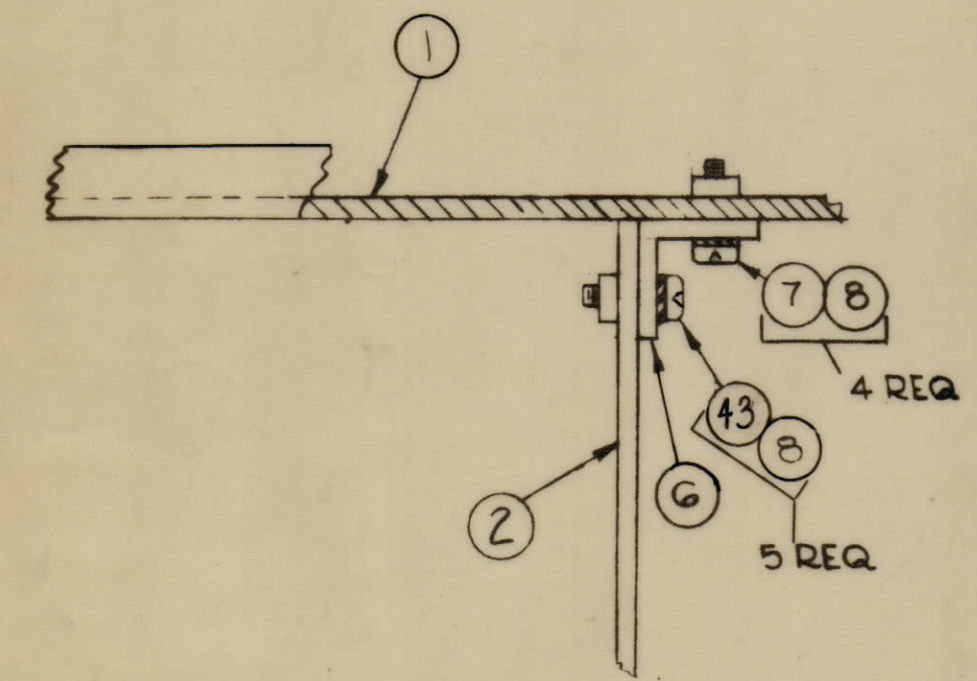
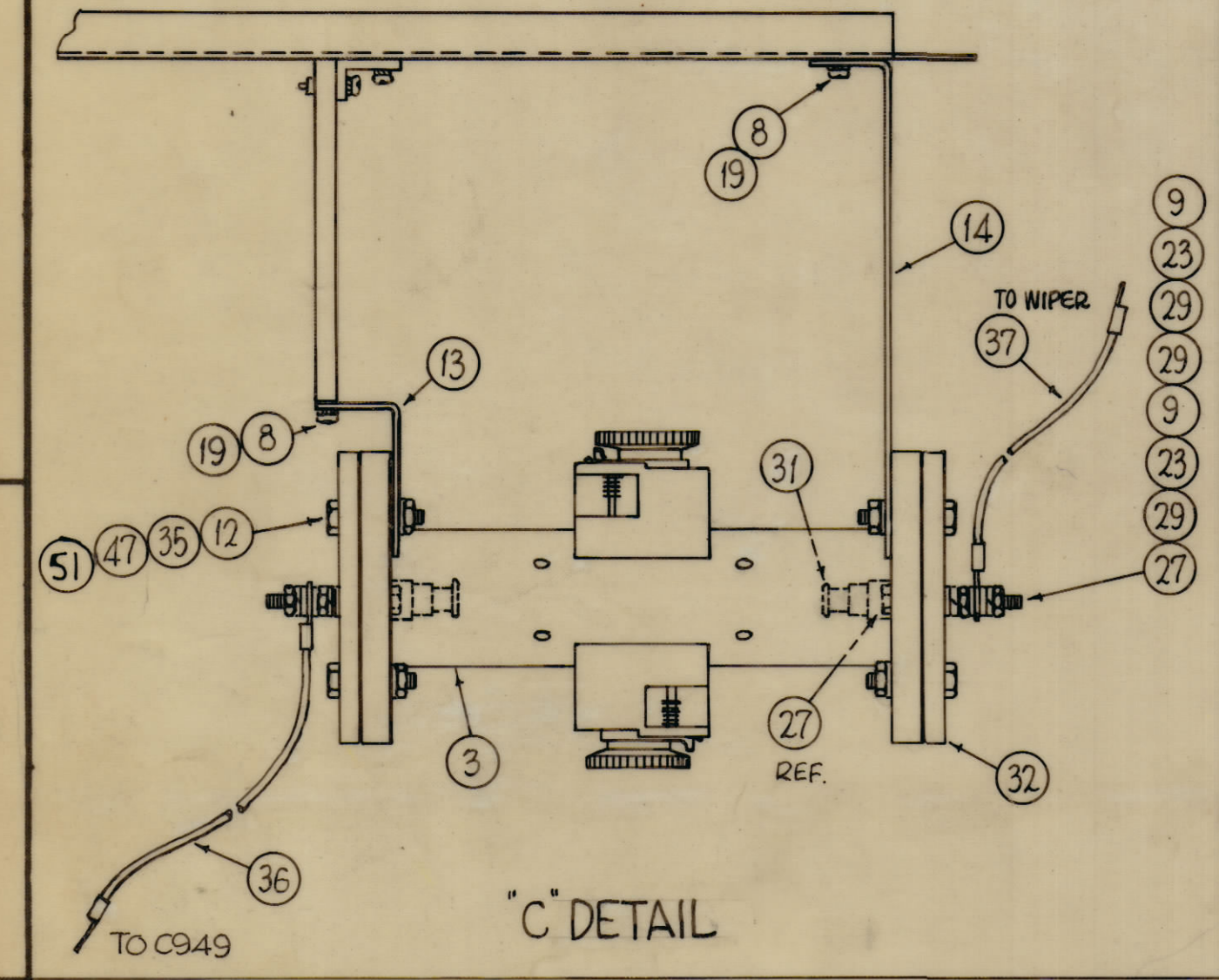


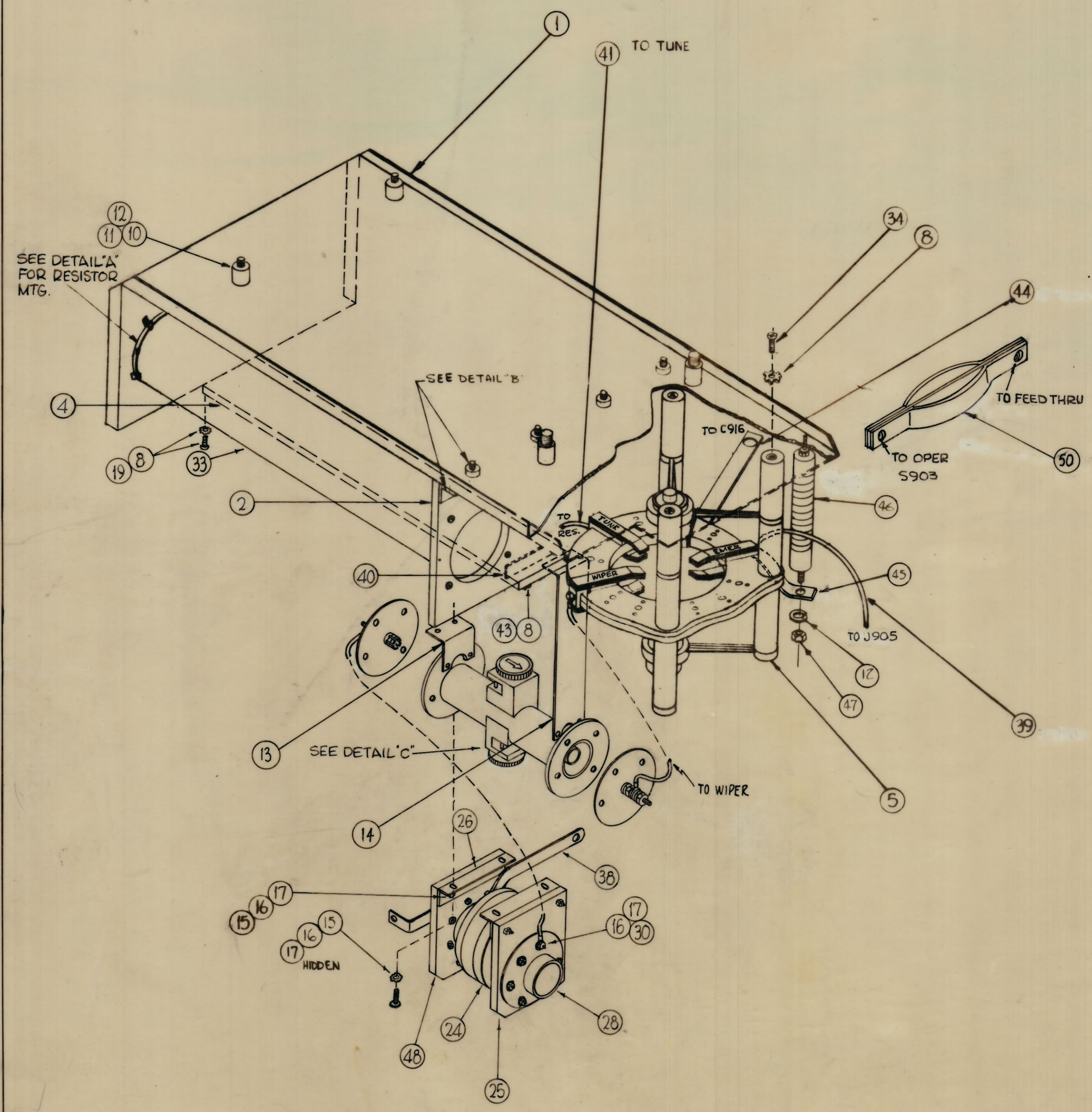
~ "A" - DETAIL ~



~ "B" - DETAIL ~



"C" DETAIL



4	51	FW25HBN	WASHER, FLAT	
1	50	MS-2535	STRAP, OPERATE-OUTPUT	
12	49	SCBPOG32BN12	SCREW, MACHINE	
1	48	PX-625	PLATE, CAPACITOR MTG, UNLETTERED	
9	47	NTH2520BN14	NUT, HEXAGON	
1	46	CL-166	COIL, RF, FIXED 35 UH	L907
1	45	MS-202-27-2.50	STRAP CONNECTING (CL-166 to Emer Pos)	
1	44	MS-202-24-7.25	STRAP CONNECTING (S903, OPER to C916)	
7	43	SCBP1032BN12	SCREW, MACHINE	
6	42	A-1142	STRAP, RESISTOR MTG	
1	41	CA-412-6-5.50	CONNECTOR, (S903 TUNE to R911, 12, 13)	
2	40	MS-202-5-5.62	STRAP, CONNECTOR (R911 to 912 to 913)	
1	39	CA-412-3-13.00	CONNECTOR (S903 EMERG to J905)	
1	38	MS-202-36-4.62	STRAP, CONNECTOR (C949 to C928 PA LOAD)	
1	37	CA-412-23-6.00	CABLE, ASSY, JUMPER H.V.	
1	36	CA-412-17-5.00	CABLE, ASSY, JUMPER H.V.	
8	35	SCHH2520BN18	SCREW, MACHINE	
3	34	SCBP1024BN14	SCREW, MACHINE	
3	33	RR-117-140	RESISTOR, GLASS, 900 W	
2	32	PX-636	PLATE, INSULATOR	
2	31	PO-224-50	STUB, INNER CONDUCTOR	
12	30	SCBP0832BN10	SCREW, MACHINE	
6	29	FW10HBN	WASHER, FLAT	
2	28	PO-185-45	BRACKET, CAPACITOR MTG.	
2	27	SCHH1032BN20	SCREW, MACHINE	
2	26	MS-2157	BRACKET, CAPACITOR MOUNT	
1	25	LD 982 / PX 625	PLATE, CAPACITOR MTG., LETTERED	
1	24	CO-106-1000-30C	CAPACITOR, FIXED, VACUUM	C949
4	23	LWS10MRN	WASHER, LOCK, SPLIT	
24	22	NTH0632BN8	NUT, HEX	
24	21	LWE06MRN	WASHER, LOCK, EXT.	
12	20	SCBP0632BN6	SCREW, MACHINE	
6	19	SCBP1032BN10	SCREW, MACHINE	
24	18	MS-2323	CLIP, RESISTOR	
26	17	NTH0832BN10	NUT, HEX.	
26	16	LWE08MRN	WASHER, LOCK, EXT.	
14	15	SCBP0832BN8	SCREW, MACHINE	
1	14	MS-3670	BRACKET, SUPPORT, THRULINE L.S.	
1	13	MS-3671	BRACKET, SUPPORT, THRULINE R.S.	
13	12	LWS25MRN	WASHER, LOCK, SPLIT	
4	11	SCHH2520BN24F	SCREW, MACHINE	
4	10	TE2520AE26R	SPACER, THREADED	
4	9	NTH1032BN12	NUT, HEXAGON	
20	8	LWE10MRN	WASHER, LOCK, EXT.	
4	7	SCBP1032BN8	SCREW, MACHINE	
1	6	MS-2319	BRACKET, LOAD RESISTOR MOUNTING	
1	5	AS-117	SWITCH ASSY. (10K RF OUTPUT)	S903
1	4	PX-543	BRACE, CENTER, LOAD RESISTOR	
1	3	DC-104	DIRECTIONAL WATT METER, THRULINE 1/2 DC900	
1	2	LD 831 / PX 542	PLATE, SIDE, LOAD RESISTOR	
1	1	LD 832 / MS 2129	PLATE, LOAD RESISTOR MTG.	

A 3424 A

A	0	ADDED IT. 51	1-25-67	17742	EME	OCB	SRG
		ORIGINAL RELEASE FOR PRODUCTION	5-13-64		SRG		
		PICTORIAL CLARIFIED					
		50 ADDED					
		38 WAS MS-202-B-7.62	5-11-64		SRG		
		37 WAS CA-412-3-6.00					
		ITEM 36 WAS CA-412-25-5.00					
SYM	ZONE	DESCRIPTION	DATE	CH. NO.	DRAFTS	CHECKER	ENG. APP.
		UNLESS OTHERWISE SPECIFIED:	SCALE				
		DIMENSIONS ARE IN INCHES	MAXIMUM ALLOWABLE TOLERANCES HAVE BEEN DETERMINED AND ANY DEVIATIONS WILL BE CAUSE FOR REJECTION. REMOVE ALL BURRS & SHARP EDGES				
		TOLERANCES ON FRACTIONS ± 1/64	DECIMALS ± .005		ANGLES ± 1/2°		

1	GPT-40K(14)	AX510	3-9-64	
REQ PER UNIT	MODEL	SECTION	ASSY. NO.	DATE
USED ON				
FINISH & SPEC NO.				
ELEC DES APP				
MECH DES APP				
SHEET OF				

THE TECHNICAL MATERIAL CORP. MANHATTAN, NEW YORK			
SWITCH & LOAD ASSEMBLY			
MATERIAL		SRG 00 RJC	
DRAWN		CHECKED	
DATE		FINAL APPROVAL	
TYPE & TEMPER		HEAT TREAT. SPEC	
FINISH & SPEC NO.		ELEC DES APP	
MECH DES APP		SHEET OF	
A 3424		A	