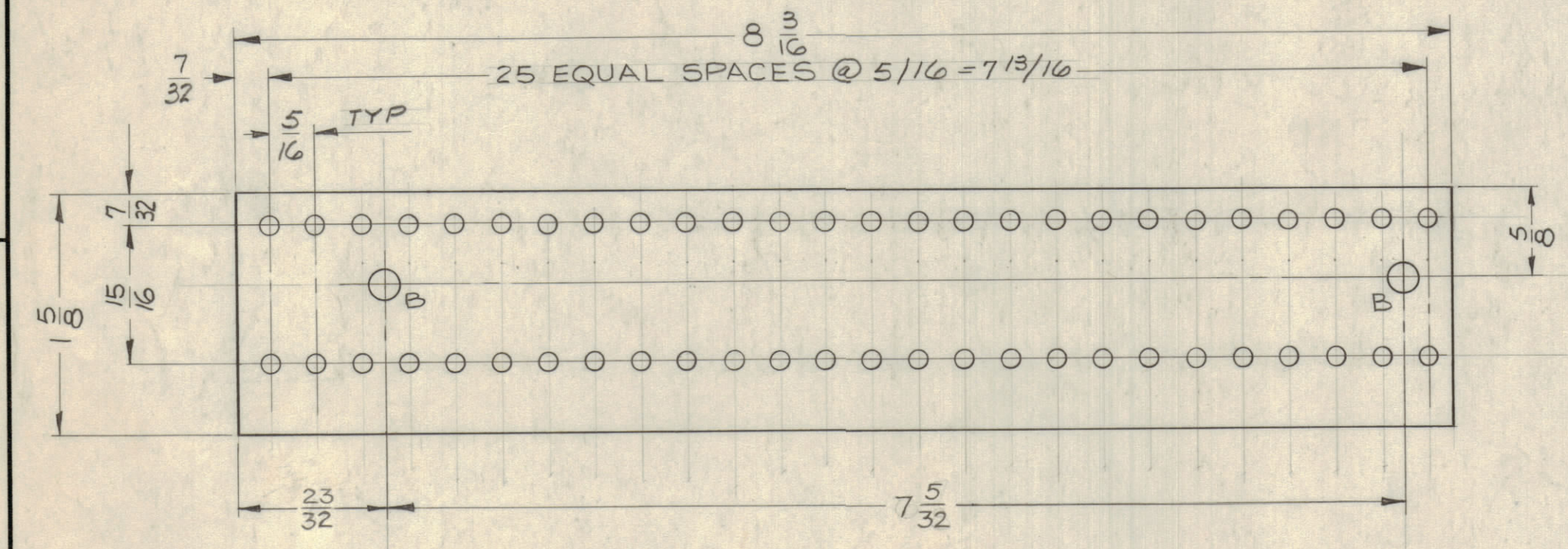


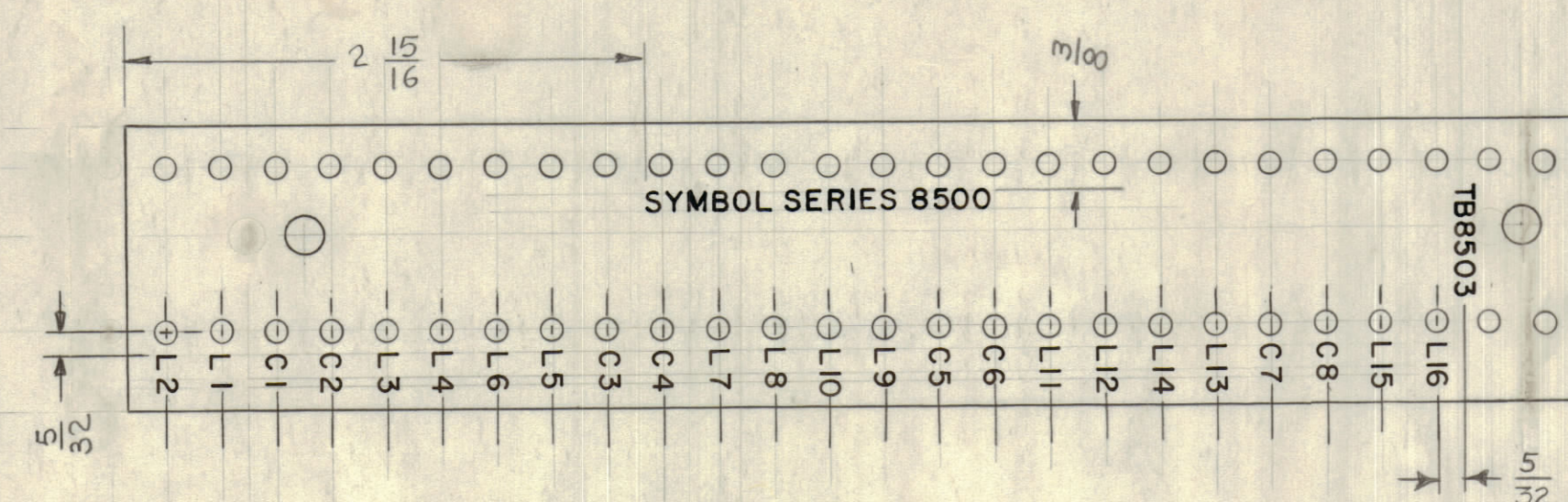
(*) A-.116 DIA - 52 HOLES
B-.189 DIA - 2 HOLES

REVISIONS							
ZONE	SYM	DESCRIPTION	DATE	E.M.N. NO.	DRAFT	CHKD	APPD
X		EXPERIMENTAL RELEASE	3/16/64		NP		
X1		BUILDUP, A3416-3 & A3416-4 CLARIFIED	2-4-65		G.D.L		
Ø		ORIGINAL RELEASE FOR PRODUCTION	2-4-65		G.D.L	TM	

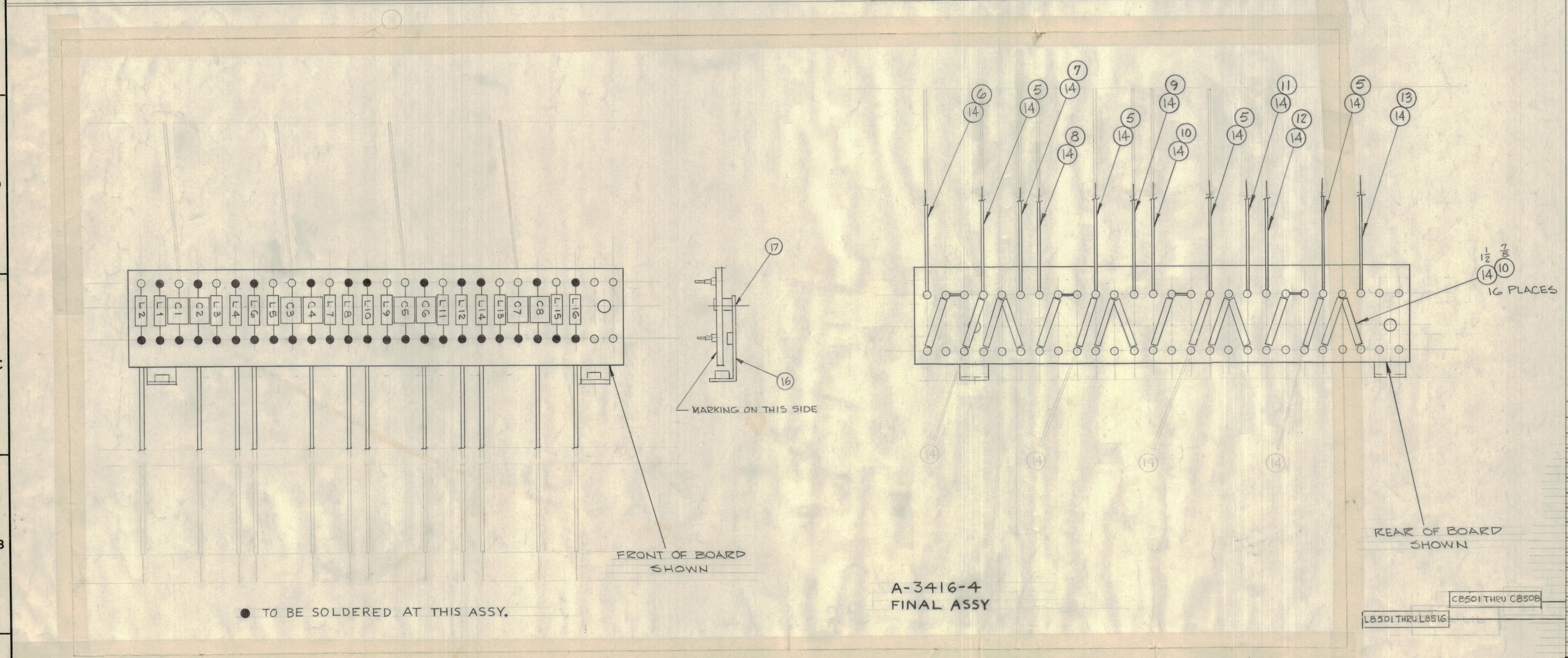
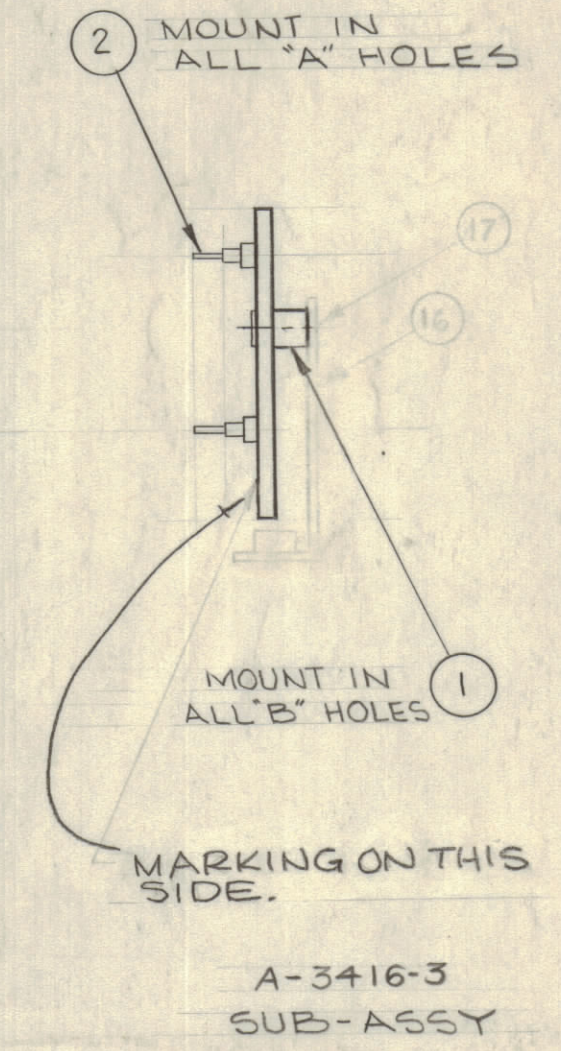


MAT'L- G-11 SILICONE FIBERGLASS, 3/32 THK
FINISH- GREEN SEMI-GLOSS
A-3416-1
MACHINING

- UNLESS OTHERWISE SPECIFIED-
ALL HOLES ARE "A" (*)



A-3416-2
MARKING
- UNLESS OTHERWISE SPECIFIED-
ALL LETTERING TO BE 1/8 HIGH BLACK GOTHIC
LOCATED ABOUT CENTER LINES OF HOLES APPROX.
AS SHOWN.
MARKING PROCESS: AS PER TMC SPEC. 5727.



REQ'D.	ITEM	PART NUMBER	DESCRIPTION	SYMBOL
2	17	SCFP0632 BN4	SCREW, MACHINE	
2	16	MS-3665	BRACKET, MOUNTING	
-	15	BS-100	SOLDER, TIN ALLOY	
	14	WL-100-7	WIRE, ELECT. BUSS	
	13	PX-104-7-034	INSULATION, SLEEVING ELECT	
12		-5-		
11		-9-		
10		-4-		
9		-6-		
8		-2-		
7		-8-		
6		-3-		
5		PX-104-1-034	INSULATION SLEEVING ELECT.	
8	4	CM15B511J	CAPACITOR, F.X.D. MICA, DIELECTRIC	
16	3	CL-270-10	COIL, RF	
52	2	TE-109-2	TERMINAL, STUD LUG	
2	1	TE-108-2	NUT, PLAIN, CLINCH TPE	

I JOHNSON LIST OF MATERIAL			
MATERIAL	FINISH	TITLE	THE TECHNICAL MATERIEL CORP. MAMARONECK, NEW YORK
SEE MACH.	SEE MACH.	TERMINAL BOARD ASSY	
QTY./UNIT	RAK-35A	MODEL USED ON	ASSY. NO.
SCALE	A		
THE CONTENTS OF THIS DRAWING ARE THE EXCLUSIVE PROPERTY OF THE TECHNICAL MATERIEL CORP. ITS UNAUTHORIZED USE OR REPRODUCTION IN WHOLE OR IN PART IS STRICTLY FORBIDDEN.		DECIMALS ± 1/64 ANGLES ± 0° 30'	FRACTIONS ± 1/64 ANGLES ± 0° 30'
DRAWN	DATE	FINAL APPROVAL	DATE
CHECKED	DATE		
ELECT. DES.	DATE		
MECH. DES.	DATE		
A-3416		Ø	
SHEET		REV. LTR.	

FUNGUS PROOFING PER
TMC SPECIFICATION S-113

NOTES

A-3416 Ø