

REV. POS. E  
A-3407

REVISIONS					
SYM	DESCRIPTION	DATE	E.M.N. NO.	DRAFT	CHKD APPD
X1	2 5/8 WAS 2 1/4	2/6/64		TR.	T.K.A.
X2	SEE SHEET 2 OF 2	4-17-64	X2	A.M.	@
O	ORIGINAL RELEASE FOR PRODUCTION	4/24/64	O	A.M.	
A	FOR REVISION SEE SHEET 2 OF 2 REV. "A"	8.14.64	11623	JB	M. T.K.A.
B	SEE SHEET 2 OF 2 REV. "B"	10.23.64	12706	JB	@ T.K.A.
C	SEE SHEET 2 OF 2 REV. "C"	4.30.65	13936	JB	@ T.K.A.
D	SEE SHEET 2 OF 2	7/9/65	14322	X.V.	@ T.K.A.
E	SEE SHEET 2 OF 2	8-17-65	14584	E	@ T.K.A.
F	NOTE 5 ADDED - SEE SHEET 2 OF 2	10-22-65	14939	G.D.L.	@ T.K.A.

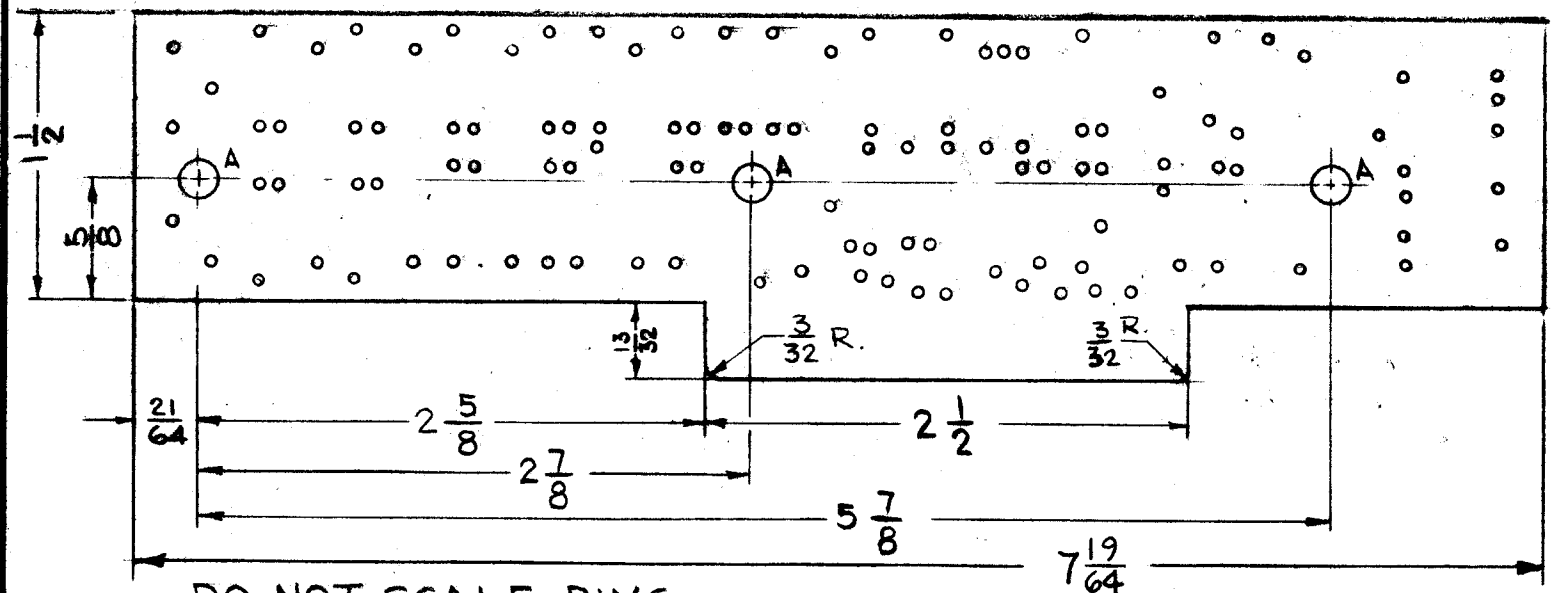
A 3407-1

HOLE & PAD SPEC.			
HOLE	DIA.	PAD DIA	REQ'D
UNMARKED	.052	.130	116
A	.189	.250	3

NOTES: TO BE MANUFACTURED IN ACCORDANCE WITH TMC SPEC. S-795, UNLESS OTHERWISE SPECIFIED.

- MATERIAL: G-10 EPOXY GLASS LAMINATE, 3/32 THICK. 2-OUNCE COPPER CLAD, BOTH SIDES.
- ALL PADS ON PRINTED CIRCUIT SIDE MUST ALSO APPEAR ON COMPONENT SIDE IN EXACT SIZE AND REGISTER.
- ALL UNMARKED HOLES ARE TO BE PLATE-THRU WITH A MINIMUM COPPER PLATING THICKNESS OF .0015. PLATE .0005 TO .0005 NICKEL AND 25 MILLIONTHS MINIMUM OF GOLD ALL ETCHED SURFACES AND PLATE-THRU HOLES.
- CONDUCTOR WIDTH: .046 MIN., .062 MAX. SPACE BETWEEN CONDUCTORS .031 MIN.
- THIS BOARD IS FOR SPARE PARTS ONLY.

ORIGINAL artwork TO BE SUPPLIED BY TMC FOR PHOTOGRAPHING (SCALE 1-1)



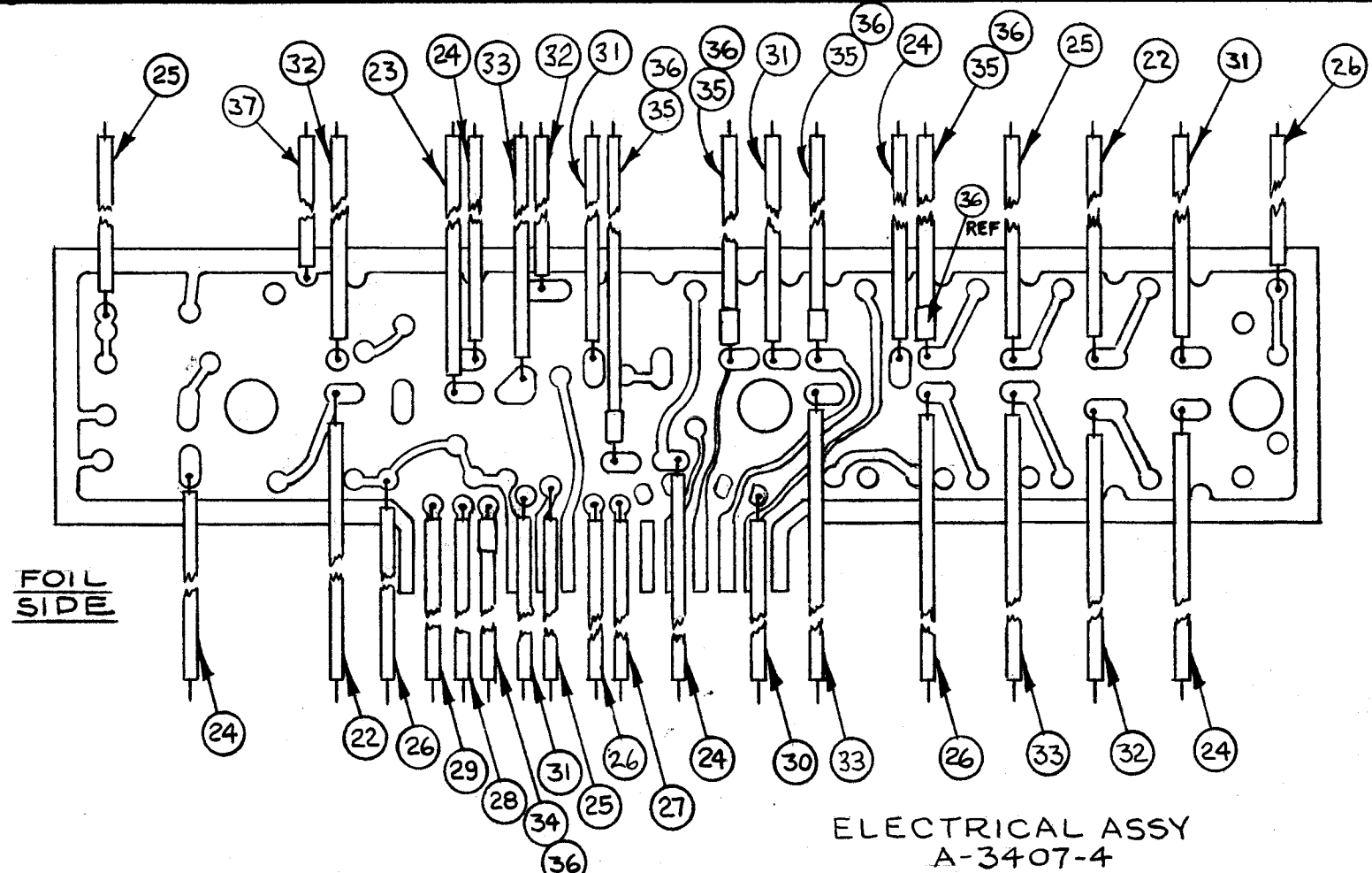
DO NOT SCALE DWG.  
MACHINING  
A3407-2

A	MSA-1	AX469
Q'TY./UNIT	MODEL USED ON	ASS'Y. NO.
SCALE 1:1	CODE A	

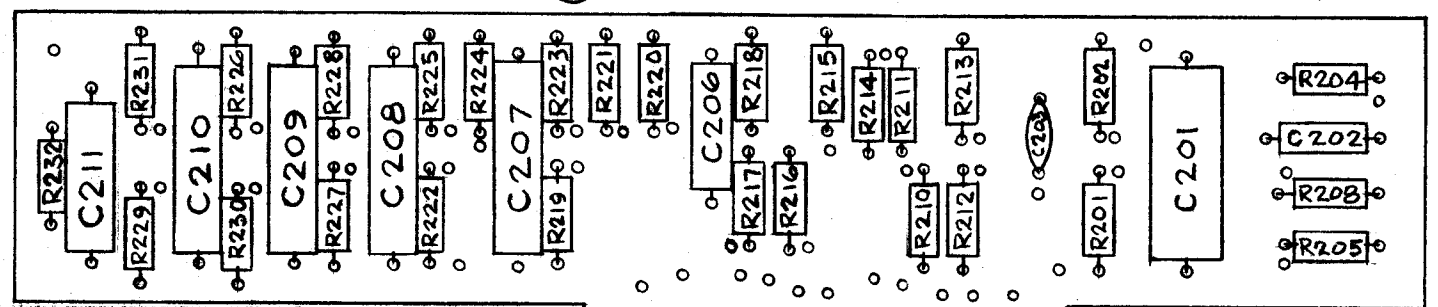
NOTES

THE CONTENTS OF THIS DRAWING ARE THE EXCLUSIVE PROPERTY OF THE TECHNICAL MATERIEL CORP. ITS UNAUTHORIZED USE OR REPRODUCTION IN WHOLE OR IN PART IS STRICTLY FORBIDDEN.

REQ'D.	ITEM	PART NUMBER	DESCRIPTION	SYMBOL
T.K. AALTONEN LIST OF MATERIAL				
MATERIAL		SEE NOTE 1		
FINISH		SEE NOTE 3		
UNLESS OTHERWISE SPECIFIED DIMENSIONS ARE IN INCHES AND INCLUDE CHEMICALLY APPLIED OR PLATED FINISHES		THE TECHNICAL MATERIEL CORP. MAMARONECK, NEW YORK		
DECIMALS .X ± .08 .XX ± .01 .XXX ± .005		TOLERANCES		FRACTIONS ± 1/64 ANGLES ± 0° 30'
DRAWN T. RAMIREZ		DATE 2/10/65	FINAL APPROVAL	
CHECKED @		DATE 4-13-64	A-3407	
ELECT. DES. T.K.A.		DATE 3/16/64	F	
MECH. DES. T.K.A.		DATE 4/13/64	SHEET 1 OF 2	



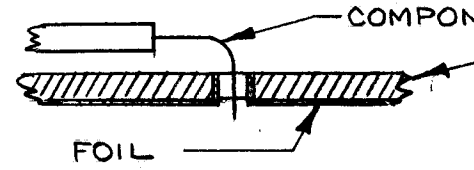
ELECTRICAL ASSY  
A-3407-4



FUNGUS PROOFING PER  
TMC SPECIFICATION S-113

ASSEMBLY NOTICE

1. TO MOUNT COMPONENTS, INSERT LEAD THRU PLATED - THRU HOLES & BEND ABOUT 1/16 OF LEAD OVER COPPER FOIL AS SHOWN.
2. APPLY HEAT TO LEAD AND FOIL, SOLDER. CAUTION: TOO MUCH HEAT WILL CAUSE FOIL TO SEPARATE FROM THE BOARD.
3. CLEAN & INSPECT PER TMC SPEC. S-676



COMPONENT SIDE  
(SEE SHEET 1 OF 2  
FOR ORIENTATION)  
SUB-ASSY  
A-3407-3

NOTES

4	MSA-1	AX469
Q'TY./UNIT	MODEL USED ON	ASS'Y. NO.
SCALE 1:1	CODE A	

THE CONTENTS OF THIS DRAWING ARE THE EXCLUSIVE PROPERTY OF THE TECHNICAL MATERIEL CORP. ITS UNAUTHORIZED USE OR REPRODUCTION IN WHOLE OR IN PART IS STRICTLY FORBIDDEN.

A-3407 F

R230  
R228  
R214

R208  
R226  
R227

R225  
R223  
R216  
R211

R213

C207  
C208  
C209  
C210

REVISIONS

SYM	DESCRIPTION	DATE	E.M.N. NO.	DRAFT	CHKD	APPD
E	ITEM 1 WAS TE-108-2	8-17-65	14584			
F	ITEM 6 WAS CN112A254M1 - SEE SHEET 1 OF 2	10-22-65	14939	D.L.G.		

REQ'D.	ITEM	PART NUMBER	DESCRIPTION	SYMBOL
1	38	CM15C47K	CAP. FXD, MICA	C207
11	37	LWC 26(7)U0	WIRE, ELECTRICAL, INSULATED	BLK
5	36	PX830-14-1	INS. SLEEVING, SHRINK	BLK
44	35	MWC22(7)SJ5	CABLE, SP., SHLD/JKT.	GRN
11	34	MWC22(7)SJ1	CABLE, SP., SHLD/JKT.	GRN
22	33	LWC26(7)U96	WIRE, ELECTRICAL, INSULATED	WHT/BLU
11	32	U95		WHT/GRN
22	31	U94		WHT/YEL
11	30	U92		WHT/RED
11	29	U91		WHT/BRN
11	28	U1		BRN
11	27	U7		VIO
44	26	U6		BLU
55	25	U5		GRN
88	24	U4		YEL
11	23	U3		ORN
11	22	LWC26(7)U2	WIRE, ELECTRICAL, INSULATED	RED
1	21	RC20GF821J	RESISTOR, FIXED, COMPOSITION	R205
2	20	683J		R204
3	19	474J		R203
3	18	472J		R202
1	17	470J		R201
1	16	391J		R215
1	15	332J		R224
1	14	273J		R201
1	13	224J		R210
1	12	223J		R212
1	11	222J		R221
2	10	158J		R216
4	9	105J		R217
2	8	104J		R222
4	7	RC20GF102J	RESISTOR, FIXED, COMPOSITION	R204
1	6	CN112A254M1	CAPACITOR, FIXED, MET.	C211
4	5	CN100-9	CAPACITOR, FIXED, MET.	C202
1	4	CM15C101J	CAPACITOR, FIXED, ELECTRIC	C202
1	3	CE105-I-25	CAPACITOR, FIXED, ELECTRIC	C206
1	2	CC100-24	CAPACITOR, FIXED, DISC	C203
3	1	TE-108-28C	STANDOFF, RIVET TYPE	

T.K. AALTONEN

LIST OF MATERIAL

**THE TECHNICAL MATERIEL CORP.**  
MAMARONECK, NEW YORK

TITLE: PRINTED CIRCUIT BOARD ASSY  
PLUG-IN AUDIO AMPLIFIER

DRAWN: T. RAMIREZ  
CHECKED: @  
ELECT. DES. [Signature]  
MECH. DES. [Signature]

DATE: 12/16/63  
DATE: 4-13-64  
DATE: 4/12/64  
DATE: 4-13-64

FINAL APPROVAL: [Signature]  
DATE: 4/22/64

DECIMALS: .X ± .05, .XX ± .01, .XXX ± .005  
FRACTIONS: ± 1/64, ± 0° 30'

TOLERANCES

REVISIONS: A-3407 F

SHEET 2 OF 2

REV. LTR.