

| SYMBOL(S) | ITEM NO. | USED TO MOUNT | QTY | REQ. PER UNIT | USED ON | | | A3402 | φ |
|-----------|----------|---------------|---------------|---------------|---------|---------------|-----------------------|-------|---|
| | | | | | MODEL | ASS'Y. NO. | DATE | | |
| | | | | 1 | MSA-1 | A3398 | 3/26/65 | | |
| B6501 | 1 | | | | | | | | |
| | 4 | TM100-12 | 4 | | | | | | |
| | 5 | TM100-12 | 2 | | | | | | |
| | 7 | TM100-12 | 1 | | | | | | |
| | 10 | TM100-12 | 4 | | | | | | |
| | 11 | TM100-12 | 1 | | | | | | |
| | 12 | BS106-3 | 4 | | | | | | |
| | | MS2687 | 4 | | | | | | |
| | 13 | TM100-12 | 4 | | | | | | |
| E6501 | 14 | TM100-12 | 3 | | | | | | |
| | 15 | | | | | | | | |
| | 6 | 16 | WL100-3 | 6 | 16 | WL100-3 | WIRE, ELEC, BUSS | | |
| | 1 | 15 | TM100-12 | 1 | 15 | TM100-12 | TERM. BD, BARR | | |
| | 3 | 14 | TE149-120 | 3 | 14 | TE149-120 | TERM. , LUG, NO. 4 | | |
| | 4 | 13 | SCBP0440BN10 | 4 | 13 | SCBP0440BN10 | SCR, MACH | | |
| | 8 | 12 | SC131-0632BN5 | 8 | 12 | SC131-0632BN5 | SCR, MACH-UNDC | | |
| | 1 | 11 | PX337-12 | 1 | 11 | PX337-12 | INS, TERM. BD | | |
| | 4 | 10 | NTH0440BN8 | 4 | 10 | NTH0440BN8 | NUT, PLN, HEX | | |
| | 6 | 9 | MWC22/7/U95 | 6 | 9 | MWC22/7/U95 | WIRE, ELEC, INS | | |
| | 6 | 8 | MWC22/7/U8 | 6 | 8 | MWC22/7/U8 | WIRE, ELEC, INS | | |
| | 1 | 7 | MS3730 | 1 | 7 | MS3730 | BRKT, POLAR. , TB | | |
| | 1 | 6 | MS2687 | 1 | 6 | MS2687 | BRKT, FAN MTG | | |
| | 2 | 5 | MS154-1 | 2 | 5 | MS154-1 | PL, MTG, TERM. BD | | |
| | 4 | 4 | LWE04MRN | 4 | 4 | LWE04MRN | WASH. , LK, EXT | | |
| | 1 | 3 | LD1435/MS3566 | 1 | 3 | LD1435/MS3566 | PLATE, REAR | | |
| | | 2 | BS100 | | 2 | BS100 | SOLDER, TIN ALY | | |
| | 1 | 1 | BL106-3 | 1 | 1 | BL106-3 | FAN, AXIAL-115V | | |

| REQ. | ITEM | PART NO. | POSE | DESCRIPTION | SYMBOL |
|-------------------------------------|------|-------------------|------|-----------------|--------|
| THE TECHNICAL MATERIEL CORP. | | | | | |
| MAMARONECK. NEW YORK | | | | | |
| STOCK SIZE | | | | | |
| PLATE ASSEMBLY, REAR | | | | | |
| MATERIAL | | | | | |
| | | 3-26-65 | | S. J. Gabil | |
| | | ENG COORD | | 6-23-65 | |
| TYPE & TEMPER | | HEAT TREAT. SPEC. | | DRAWN CHECKED | |
| | | | | FINAL APPROVAL | |
| | | | | A3402 | |
| FINISH & SPEC. NO. | | ELEC. DES. APP. | | MECH. DES. APP. | |
| | | | | φ | |

| SYMBOL(S) | ITEM NO. | USED TO MOUNT | QTY | REQ. PER UNIT | USED ON | | | A3403 | Ø |
|--------------|----------|---------------|-----|---------------|---------|---------------|----------------------|-------|---|
| | | | | | MODEL | ASS'Y. NO. | DATE | | |
| | | | | 1 | MSA-1 | A3398 | 3/26/65 | | |
| DS6501-6504 | 1 | | | | | | | | |
| C6514 | 3 | | | | | | | | |
| J6516 | 4 | | | | | | | | |
| M6501-6504 | 7 | | | | | | | | |
| R6552-6555 | 10 | | | | | | | | |
| R6551 | 11 | | | | | | | | |
| R6556,6558 | 12 | | | | | | | | |
| R6560,6562 | 13 | NP616 | 4 | | | | | | |
| S6502 | 14 | | | | | | | | |
| S6501 | 15 | | | | | | | | |
| | 16 | R6551 | 1 | | | | | | |
| XDS6501-6504 | 17 | | | | | | | | |
| | | | | 3 | 18 | WL100-6 | WIRE,ELEC,BUSS-SZ 20 | | |
| | | | | 4 | 17 | TS106-3 | LIGHT,IND | | |
| | | | | 1 | 16 | TE111-2 | TERM.,LUG,3/8D | | |
| | | | | 1 | 15 | SW150 | SW,ROTARY | | |
| | | | | 1 | 14 | SW120 | SW,ROTARY | | |
| | | | | 4 | 13 | SFB0256SN3 | SCR,TAP.,THD CTG | | |
| | | | | 4 | 12 | RV4NAYSD505A | RES,VAR-COMP | | |
| | | | | 1 | 11 | RV4NAYSD104A | RES,VAR-COMP | | |
| | | | | 4 | 10 | RC20GF105J | RES,FXD,COMP | | |
| | | | | 12 | 9 | PX104-1-034 | INS SLVG,SZ 20 -BLK | | |
| | | | | 1 | 8 | NP616 | PLATE,IDENT-COML | | |
| | | | | 4 | 7 | MR154 | METER,AUDIO LVL | | |
| | | | | 7 | 6 | MP123-1FB | KNOB | | |
| | | | | 1 | 5 | LD1401/MS3562 | PNL,FRONT | | |
| | | | | 1 | 4 | JJ034 | JACK,TEL | | |
| | | | | 1 | 3 | CN112A105M2 | CAP.,FXD,MTLZ P | | |
| | | | | | 2 | BS100 | SOLDER,TIN ALY | | |
| | | | | 4 | 1 | BI101-47 | LAMP,INCAND | | |

| REQ. | ITEM | PART NO. | POSE | DESCRIPTION | SYMBOL |
|------|------|----------|----------------------|--|-----------------|
| | | | | THE TECHNICAL MATERIEL CORP. MAMARONECK. NEW YORK | |
| | | | STOCK SIZE | | |
| | | | | PANEL ASSEMBLY,FRONT | |
| | | | MATERIAL | | |
| | | | 3-26-65 ENG COORD | 2. Gabel 6-23-65 | |
| | | | TYPE & TEMPER | HEAT TREAT. SPEC. | DRAWN |
| | | | | | CHECKED |
| | | | | | FINAL APPROVAL |
| | | | | | A3403 |
| | | | FINISH & SPEC. NO. | ELEC. DES. APP. | MECH. DES. APP. |

| SYMBOL(S) | DESCRIPTION | DATE | CH. NO. | DRAFTS | CHECKER | ENG. APP. |
|-----------|---|---|------------|--------|---------|-----------|
| Ø | ORIGINAL RELEASE FOR PRODUCTION | 6/24/65 | | | | |
| | UNLESS OTHERWISE SPECIFIED DIMENSIONS ARE IN INCHES AND INCLUDE CHEMICALLY APPLIED OR PLATED FINISHES | SCALE | | | | |
| | DECIMALS .X ± .05 .XX ± .01 .XXX ± .005 | FRACTIONS ± 1/64 ANGLES ± 0° 30' | TOLERANCES | | | |

| SYMBOL(S) | ITEM NO. | USED TO MOUNT | QTY |
|-----------|----------|---------------|-----|
|-----------|----------|---------------|-----|

| REQ. PER UNIT | USED ON | | | A3404 | A |
|---------------|---------|------------|---------|-------|---|
| | MODEL | ASS'Y. NO. | DATE | | |
| 1 | MSA-1 | A3398 | 3/26/65 | | |

| | | | | |
|------------|-------------|----------------|---------|---|
| C6515-6516 | 3 | | | |
| | 6 | TE102-2 | 2 | |
| | 7 | A3408-5 | 3 | |
| | | CE102-1 | 4 | |
| | | MS3583, RW110 | 3,1 | |
| | 9 | CE102-1, RW110 | 4,1 | |
| | R6530, 6536 | 10 | | |
| | | R6538, 6544 | | |
| | | R6564-6567 | | |
| | R6577 | 12 | TE102-2 | 2 |
| 13 | | A3408-5 | 3 | |
| | | CE102-1 | 4 | |
| | | MS3583 | 3 | |
| 15 | | RW110 | 1 | |
| 16 | | | | |
| 17 | | RW110 | 1 | |
| 18 | | RW110 | 2 | |
| 19 | | RW110, WRG | 2 | |

| | | | |
|----|----|---------------|-------------------|
| 1 | 19 | MWC22(7)UO | WIRE, ELEC, INS. |
| 2 | 18 | WAI09-39 | WASH., NM |
| 1 | 17 | SCBP0632BN38 | SCR, MACH |
| 1 | 16 | RW110-20 | RES, FXD, WW |
| 1 | 15 | FW06HBN | WASH., FLAT |
| 2 | 14 | TE102-2 | TERM., STUD, INS |
| 10 | 13 | SCBP0632BN5 | SCR, MACH |
| 2 | 12 | SCBP0440BN4 | SCR, MACH |
| 4 | 11 | RC42GF122J | RES, FXD, COMP |
| 4 | 10 | RC20GF394J | RES, FXD, COMP |
| 5 | 9 | NTH0632BN8 | NUT, PLN, HEX |
| 1 | 8 | MS3583 | BRKT, MTG, MDL |
| 11 | 7 | LWE06MRN | WASH., LK, EXT |
| 2 | 6 | LWE04MRN | WASH., LK, EXT |
| 1 | 5 | LD1434/MS3565 | CHAS, FRONT |
| 1 | 4 | EY102-7 | GROM, RUB., 1/2D |
| 2 | 3 | CE102-1 | CAP., FXD, ELECT. |
| | 2 | BS100 | SOLDER, TIN ALY |
| 1 | 1 | A3408-5 | PC BD, FNL ASSY |

| SYM | DESCRIPTION | DATE | CH. NO. | DRAFTS | CHECKER | ENG. APP. | REQ. ITEM | PART NO. | POSE | DESCRIPTION | SYMBOL | | | | |
|-----|---|---|------------|--------|---------|-----------|-----------|----------|------|---|--|-----------------|-----------------|----------------|-------|
| A | ITEMS 15, 16, 17, 18, 19 ADDED TO BOTH PARTS, ITS QTY WAS 10 & 4 | 7/16/65 | 14460 | | | | | | | THE TECHNICAL MATERIEL CORP. MAMARONECK, NEW YORK | | | | | |
| | ORIGINAL RELEASE FOR PRODUCTION | 6/29/65 | | | | | | | | | CHASSIS ASSEMBLY, FRONT | | | | |
| | UNLESS OTHERWISE SPECIFIED DIMENSIONS ARE IN INCHES AND INCLUDE CHEMICALLY APPLIED OR PLATED FINISHES | SCALE | | | | | | | | | | | | | |
| | DECIMALS .X ± .05 .XX ± .01 .XXX ± .005 | FRACTIONS ± 1/64 ANGLES ± 0° 30' | TOLERANCES | | | | | | | 3-26-65 ENG COORD 6-23-65 | <i>x.g. obel</i> <i>6-23-65</i> <i>1/11/65 6/24/65</i> | | | | |
| | | | | | | | | | | TYPE & TEMPER | HEAT TREAT. SPEC. | DRAWN | CHECKED | FINAL APPROVAL | |
| | | | | | | | | | | FINISH & SPEC. NO. | | ELEC. DES. APP. | MECH. DES. APP. | | A3404 |

| SYMBOL(S) | ITEM NO. | USED TO MOUNT | QTY | USED ON | | | A3406 | Ø |
|------------|----------|---------------|-----|---------------|-------|---------------|---------------------------------|---|
| | | | | REQ. PER UNIT | MODEL | ASS'Y. NO. | | |
| | | | | 1 | AX466 | A3553 | 10/9/64 | |
| | 9 | FS108 | 2 | | | | | |
| | | TM121-4 | 1 | | | | | |
| | 10 | FS108 | 2 | | | | | |
| | | TM121-4 | 1 | | | | | |
| | 12 | TM121-4 | 1 | | | | | |
| | 13 | A3371-1,2 | 4 | | | | | |
| | | A3378 | 3 | | | | | |
| | 14 | FS108 | 2 | | | | | |
| S6401,6402 | 15 | | | | | | | |
| | 16 | UG657*/U | 2 | 2 | 21 | WA102-9 | WASHER,NM,SHOULDER | |
| J6401,6402 | 18 | | | 2 | 20 | WA101-10 | WASHER,NM | |
| | 20 | UG657*/U | 2 | 3 | 19 | WL100-6 | WIRE,ELECTRICAL,BUSS,SZ 20 | |
| | 21 | UG657*/U | 2 | 2 | 18 | UG657*/U | CONNECTOR,RECPTACLE,RF,BNC | |
| | | | | 1 | 17 | TM121-4 | TERMINAL BOARD-LUG,MIN | |
| | | | | 2 | 16 | TE111-2 | TERMINAL,LUG,3/8 D | |
| | | | | 2 | 15 | SW327 | SWITCH,ROTARY | |
| | | | | 2 | 14 | SCBP0440BN4 | SCREW,MACHINE | |
| | | | | 7 | 13 | SC131-0632BN5 | SCREW,MACHINE | |
| | | | | 1 | 12 | SC131-0440BN4 | SCREW,MACHINE | |
| | | | | 3 | 11 | PX104-1-034 | INSULATION SLEEVING,SZ 20,BLACK | |
| | | | | 3 | 10 | NTH0440BN6 | NUT,PLAIN,HEX | |
| | | | | 3 | 9 | LWE04MRN | WASHER,LOCK,EXTERNAL | |
| | | | | 1 | 8 | LD1428/MS3625 | CHASSIS,MAIN | |
| | | | | 1 | 7 | FS108 | RECEPTACLE,FRICITION CATCH | |
| | | | | 1 | 6 | CA848 | WIRING HARNESS,BRANCHED | |
| | | | | 1 | 5 | CA847 | WIRING HARNESS,BRANCHED | |
| | | | | | 4 | BS100 | SOLDER,TIN ALLOY | |
| | | | | 1 | 3 | A3378 | REACTOR ASSEMBLY | |
| | | | | 1 | 2 | A3371-2 | CAPACITOR,ASSEMBLY,C6403,6404 | |
| | | | | 1 | 1 | A3371-1 | CAPACITOR ASSEMBLY,C6401,6402 | |

| REQ. | ITEM | PART NO. | AALT. | | DESCRIPTION | SYMBOL |
|---|---------------------------------|---|--------------------|--------|-------------------------------------|---|
| | | | | | THE TECHNICAL MATERIEL CORP. | |
| | | | STOCK SIZE | | MAMARONECK. NEW YORK | |
| | | | | | CHASSIS ASSEMBLY,MAIN | |
| Ø | ORIGINAL RELEASE FOR PRODUCTION | 10-12-64 | Ø | Ø | | |
| SYM | DESCRIPTION | DATE | CH. NO. | DRAFTS | CHECKER | ENG. APP. |
| UNLESS OTHERWISE SPECIFIED DIMENSIONS ARE IN INCHES AND INCLUDE CHEMICALLY APPLIED OR PLATED FINISHES | | SCALE | | | | |
| DECIMALS .X ± .05 .XX ± .01 .XXX ± .005 | | FRACTIONS ± 1/64 ANGLES ± 0° 30' | CODE | | | |
| TOLERANCES | | | TYPE & TEMPER | | HEAT TREAT. SPEC. | ENG COORD DRAWN CHECKED FINAL APPROVAL |
| | | | FINISH & SPEC. NO. | | ELEC. DES. APP. | MECH. DES. APP. |
| | | | | | | A3406 |
| | | | | | | Ø |

| | | | | USED ON | | | | | B |
|--|--|--|--|---------------|-------|-----------|----------|-------|---|
| | | | | REQ. PER UNIT | MODEL | ASSY. NO. | DATE | | |
| | | | | 1 | AX433 | | 11/12/64 | A3410 | |

| SYMBOL(S) | ITEM NO. | USED TO MOUNT | QTY | | | | | | |
|-----------|----------|---------------|-----|--|--|--|--|--|--|
| CR8 | 1 | | | | | | | | |
| C1 | 3 | | | | | | | | |
| | 5 | 1N2976B | | | | | | | |
| | | VR101-24S51 | | | | | | | |
| | 7 | CU145B1 | 3 | | | | | | |
| | | RW107-18 | 2 | | | | | | |
| | 8 | RL156-1 | 1 | | | | | | |
| | 9 | RL156-1 | 1 | | | | | | |
| | 10 | CU102-3 | 1 | | | | | | |
| | | CU145B1 | 1 | | | | | | |
| | | RW107-18 | 2 | | | | | | |
| | 11 | C1 WRG | 2 | | | | | | |
| | 12 | R3 WRG | 2 | | | | | | |
| K1 | 13 | | | | | | | | |
| R3, R5 | 14 | | | | | | | | |
| | 15 | CU145B1 | 2 | | | | | | |
| | 16 | RW107-18 | 2 | | | | | | |
| | 17 | CU145B1 | 1 | | | | | | |
| CR6 | 18 | | | | | | | | |
| | 19 | RW107-18 | 4 | | | | | | |
| | 20 | C1 WRG | 2 | | | | | | |
| | | R3 WRG | 2 | | | | | | |
| CR10 | 21 | | | | | | | | |

| | | | | | | | | | |
|---|----|---------------|--|--|--|--|--|--|-------------------------------------|
| 1 | 21 | IN2484 | | | | | | | SEMICONDUCTOR DEVICE, DIODE |
| 4 | 20 | WL100-5 | | | | | | | WIRE, ELECTRICAL, BUSS |
| 4 | 19 | WA102-4 | | | | | | | WASHER, SHOULDER, NM |
| 1 | 18 | VR101-24S51 | | | | | | | SEMICONDUCTOR DEVICE, DIODE-Z |
| 1 | 17 | SCBP0632BN20 | | | | | | | SCREW, MACHINE |
| 2 | 16 | SCBP0632BN22 | | | | | | | SCREW, MACHINE |
| 2 | 15 | SCBP0632BN4 | | | | | | | SCREW, MACHINE |
| 2 | 14 | RW107-18 | | | | | | | RESISTOR, FIXED, WW-5W-100ohm |
| 1 | 13 | RL156-1 | | | | | | | RELAY, ARMATURE |
| 2 | 12 | PX104-8-042 | | | | | | | INSULATION SLEEVING, SIZE 18-ORANGE |
| 2 | 11 | PX104-3-042 | | | | | | | INSULATION SLEEVING, SIZE 18-RED |
| 4 | 10 | NTH0632BN8 | | | | | | | NUT, PLAIN, HEX |
| 1 | 9 | NTH0348BN6 | | | | | | | NUT, PLAIN, HEX |
| 1 | 8 | LWS03MRN | | | | | | | WASHER, LOCK, SPLIT |
| 5 | 7 | LWE06MRN | | | | | | | WASHER, LOCK, EXTERNAL |
| 1 | 6 | LD1336/MS3432 | | | | | | | CHASSIS, CAPACITOR |
| | 5 | GL114 | | | | | | | INSULATING VARNISH, ELECTRICAL |
| 1 | 4 | CU145B1 | | | | | | | RETAINER, CAPACITOR |
| 1 | 3 | CE117-1 | | | | | | | CAPACITOR, FIXED, ELECTROLYTIC |
| | 2 | BS100 | | | | | | | SOLDER, TIN ALLOY |
| 1 | 1 | 1N2976B | | | | | | | SEMICONDUCTOR DEVICE, DIODE |

| REQ. | ITEM | PART NO. | POSE | DESCRIPTION | SYMBOL | | | | | | |
|---|---|---|---------|-------------|---------|-----------|----------|--------------------|-------|---------------------------------|----------------|
| B | IT. 21 ADDED, "REQ"-UPDATED ON U ED TO MOUNT-R5 & CR10 ADD. | 2.13.65 13471 | SB | | | | | | | | |
| A | R107-18 WAS R107-16 (5 PLACES) | 1.20.65 13309 | SB | | | | | | | | |
| Ø | ORIGINAL RELEASE FOR PRODUCTION | 12-14-64 | # | | | | | | | | |
| SYM | DESCRIPTION | DATE | CH. NO. | DRAFTS | CHECKER | ENG. APP. | MATERIAL | ENG COORD | DRAWN | CHECKED | FINAL APPROVAL |
| UNLESS OTHERWISE SPECIFIED DIMENSIONS ARE IN INCHES AND INCLUDE CHEMICALLY APPLIED OR PLATED FINISHES | | SCALE | | | | | | T. Gabriel | | 11-20-64 | |
| DECIMALS .x ± .05 .xx ± .01 .xxx ± .005 | | FRACTIONS ± 1/64 ANGLES ± 0° 30' | | TOLERANCES | | CODE | | TYPE & TEMPER | | HEAT TREAT. SPEC. | |
| | | | | | | | | FINISH & SPEC. NO. | | ELEC. DES. APP. MECH. DES. APP. | |
| | | | | | | | | | | A3410 | |

| SYMBOL(S) | ITEM NO. | USED TO MOUNT | QTY |
|-----------|----------|---------------|-----|
| | 5 | A3420 | 7 |
| | | A3421 | 7 |
| | 8 | A3420 | 6 |
| | | A3421 | 6 |
| | 9 | A3419 | 4 |
| | 10 | A3420 | 6 |
| | | A3421 | 6 |
| | 11 | A3420 (REAR) | 1 |
| | | A3421 (REAR) | 1 |

| REQ. PER UNIT | USED ON | | | A3418 | A |
|---------------|---------|------------|----------|-------|---|
| | MODEL | ASS'Y. NO. | DATE | | |
| 1 | BPSX-1 | | 10/13/64 | | |

| | | | |
|----|----|-------------|----------------------------|
| 2 | 11 | SCBP0632BN5 | SCREW, MACHINE |
| 12 | 10 | SCFP0632BN4 | SCREW, MACHINE |
| 4 | 9 | SCBP1032BN6 | SCREW, MACHINE |
| 12 | 8 | NTH0632BN8 | NUT, PLAIN, HEX |
| 1 | 7 | MS3656 | COVER, BOTTOM |
| 1 | 6 | MS3655 | COVER, TOP |
| 14 | 5 | LWE06MRN | WASHER, LOCK, EXTERNAL |
| 1 | 4 | A3422 | CHASSIS ASSEMBLY, MAIN |
| 1 | 3 | A3421 | PLATE ASSEMBLY, RIGHT SIDE |
| 1 | 2 | A3420 | PLATE ASSEMBLY, LEFT SIDE |
| 1 | 1 | A3419 | PANEL ASSEMBLY, FRONT |

| | | REQ. | ITEM | PART NO. | DESCRIPTION | SYMBOL | |
|---|---|---|---------|---|--|------------|---|
| A | B/M; IT. (11) ADDED IT (5) WAS 12 REQ. | 11-19-64 | 129 | J. L. | THE TECHNICAL MATERIEL CORP. MAMARONECK. NEW YORK BPSX-1 FINAL ASSEMBLY | | |
| | U/T/M; IT. (11) ADDED IT (5) WAS 12 REQ. | 64 | 29 | L. | | STOCK SIZE | |
| | ORIGINAL RELEASE FOR PRODUCTION | 11-3-64 | Ø | 9L | | MATERIAL | |
| SYM | DESCRIPTION | DATE | CH. NO. | DRAFTS | CHECKER | ENG. APP. | |
| UNLESS OTHERWISE SPECIFIED DIMENSIONS ARE IN INCHES AND INCLUDE CHEMICALLY APPLIED OR PLATED FINISHES | | SCALE | | ENG COORD <i>10-23-64 J. Gabriel</i> <i>RDC</i> TYPE & TEMPER HEAT TREAT. SPEC. DRAWN CHECKED FINAL APPR VAL | | | |
| DECIMALS .X ± .05 .XX ± .01 .XXX ± .005 | TOLERANCES | FRACTIONS ± 1/64 ANGLES ± 0° 30' | CODE | FINISH & SPEC. NO. ELEC. DES. APP. MECH. DES. APP. | | | |
| | | | | | | A3418 | A |

| SYMBOL(S) | ITEM NO. | USED TO MOUNT | QTY | REQ. PER UNIT | USED ON | | | A3419 | Ø |
|-----------|----------|---------------|-----|---------------|---------|------------|----------|-------|---|
| | | | | | MODEL | ASS'Y. NO. | DATE | | |
| | | | | 1 | BPSX-1 | A3418 | 10/13/64 | | |

| | | | |
|------------------|----|--------------------|---|
| C1001 | 1 | | |
| | 2 | HA102 | 4 |
| M1001 | 6 | | |
| | 8 | HA102 | 4 |
| | 9 | NP102 | 4 |
| S1001A,B, C,D | 10 | | |
| | 11 | C1001/M1001 WIRING | 2 |
| | 12 | M1001 WIRING | 1 |
| | 13 | M1001 WIRING | 1 |

| | | | |
|---|----|---------------|--------------------------------|
| 1 | 13 | TE159-34162 | TERMINAL, LUG-INS, NO. 1/4 |
| 1 | 12 | TE156-32953 | TERMINAL, LUG-INS, NO. 1/4 |
| 2 | 11 | TE104-5 | TERMINAL, LUG-LOCKING, NO. 1/4 |
| 1 | 10 | SW345 | SWITCH, ROTARY |
| 4 | 9 | SFB0256SN3 | SCREW, TAP., THREAD CUTTING |
| 4 | 8 | SCFP1032BN8 | SCREW, MACHINE |
| 1 | 7 | NP102-81 | PLATE, IDENTIFICATION |
| 1 | 6 | MR176-1 | AMMETER, DC |
| 1 | 5 | MP123-5FB | KNOB |
| 1 | 4 | LD1445/MS3651 | PANEL FRONT |
| 2 | 3 | HA102-7BN | HANDLE, BOW |
| 4 | 2 | CU139-2B | FERRULE, HANDLE |
| 1 | 1 | CC100-35 | CAPACITOR, FIXED, CERAMIC |

| | | | | | | | | | | | | | |
|---|---------------------------------|-----------|---------|---------|--------|---------|-----------|--------------------|-------------------|--|-----------------|----------------|--|
| | | | | | | | | REQ. ITEM | PART NO. | GELLMAN | DESCRIPTION | SYMBOL | |
| | | | | | | | | | | THE TECHNICAL MATERIEL CORP. MAMARONECK. NEW YORK | | | |
| | | | | | | | | | STOCK SIZE | PANEL ASSEMBLY, FRONT | | | |
| Ø | ORIGINAL RELEASE FOR PRODUCTION | | 11.3.64 | Ø | R.L. | | | | | | | | |
| SYM | DESCRIPTION | | DATE | CH. NO. | DRAFTS | CHECKER | ENG. APP. | MATERIAL | | | | | |
| UNLESS OTHERWISE SPECIFIED DIMENSIONS ARE IN INCHES AND INCLUDE CHEMICALLY APPLIED OR PLATED FINISHES | | | SCALE | | | | | | ENG COORD | 10-23-64 | R.L. | | |
| DECIMALS | | FRACTIONS | | CODE | | | | TYPE & TEMPER | HEAT TREAT. SPEC. | DRAWN | CHECKED | FINAL APPR VAL | |
| .X ± .05 | | ± 1/64 | | | | | | | | | | A3419 | |
| .XX ± .01 | | ANGLES | | | | | | | | | | Ø | |
| .XXX ± .005 | | ± 0° 30' | | | | | | FINISH & SPEC. NO. | | ELEC. DES. APP. | MECH. DES. APP. | | |

| SYMBOL(S) | ITEM NO. | USED TO MOUNT | QTY |
|-----------|----------|---------------|-----|
|-----------|----------|---------------|-----|

| REQ. PER UNIT | USED ON | | | A3421 | Ø |
|---------------|---------|------------|----------|-------|---|
| | MODEL | ASS'Y. NO. | DATE | | |
| 1 | BPSX-1 | A3418 | 10/13/64 | | |

| | | |
|---|-------|----|
| 2 | FS102 | 12 |
| 4 | FS102 | 12 |
| 5 | FS102 | 12 |

| | | | |
|----|---|-------------|---------------------|
| 12 | 5 | SCFP0348BN4 | SCREW, MACHINE |
| 12 | 4 | NTH0348BN6 | NUT, PLAIN, HEX |
| 1 | 3 | MS3654 | PLATE, SIDE, RIGHT |
| 12 | 2 | LWS03MRN | WASHER, LOCK, SPLIT |
| 6 | 1 | FS102-1 | LOCKSPRING |

| REQ. | ITEM | PART NO. | GELLMAN | | | | DESCRIPTION | SYMBOL | | |
|---|---------------------------------|----------------------------------|------------|--------|---------|---------------|-------------------------------------|-----------------|-----------------|----------------|
| | | | | | | | THE TECHNICAL MATERIEL CORP. | | | |
| | | | STOCK SIZE | | | | MAMARONECK. NEW YORK | | | |
| Ø | | | | | | | PLATE ASSEMBLY, RIGHT SIDE | | | |
| Ø | ORIGINAL RELEASE FOR PRODUCTION | 11-3-64 | Ø | J.F. | | | | | | |
| SYM | DESCRIPTION | DATE | CH. NO. | DRAFTS | CHECKER | ENG. APP. | MATERIAL | | | |
| UNLESS OTHERWISE SPECIFIED DIMENSIONS ARE IN INCHES AND INCLUDE CHEMICALLY APPLIED OR PLATED FINISHES | | SCALE | | | | | ENG COORD | 10-2 | | |
| DECIMALS .X ± .05 .XX ± .01 .XXX ± .005 | | FRACTIONS ± 1/64 ANGLES ± 0° 30' | | CODE | | TYPE & TEMPER | HEAT TREAT. SPEC. | DRAWN | CHECKED | FINAL APPROVAL |
| TOLERANCES | | | | | | | | | | |
| | | | | | | | | | A3421 | Ø |
| | | | | | | | FINISH & SPEC. NO. | ELEC. DES. APP. | MECH. DES. APP. | |

| SYMBOL(S) | ITEM NO. | USED TO MOUNT | QTY | REQ. PER UNIT | USED ON | | | A3456 | A |
|-----------|----------|---------------|-----|---------------|----------|------------|--------|-------|---|
| | | | | | MODEL | ASS'Y. NO. | DATE | | |
| | | | | 1 | PSP-350B | A5084 | 8/6/65 | | |
| | | | | 1 | PSP-350A | A3455 | | | |

| | | | |
|------|----|---------|----|
| S101 | 3 | MS1230 | 6 |
| | | SW219 | 3 |
| | 4 | MS1226 | 2 |
| | 5 | FS102-1 | 10 |
| | 8 | FS102-1 | 10 |
| | 9 | MS1230 | 6 |
| | 10 | MS1226 | 2 |
| | 11 | MS1230 | 6 |
| | | SW219 | 3 |
| | 12 | MS1226 | 2 |
| | 13 | FS102-1 | 10 |
| | 14 | | 1 |
| | 15 | SW219 | 3 |

| | | | |
|----|----|--------------|----------------|
| 3 | 15 | WA109-17 | WASH.,NM |
| 1 | 14 | SW219 | SW,PUSH-PULL |
| 10 | 13 | SCFP0348BN5 | SCR,MACH |
| 2 | 12 | SCBP0632BN6 | SCR,MACH |
| 9 | 11 | SCBP0440BN5 | SCR,MACH |
| 2 | 10 | NTH0632BN8 | NUT,PLN,HEX |
| 6 | 9 | NTH0440BN6 | NUT,PLN,HEX |
| 10 | 8 | NTH0348BN6 | NUT,PLN,HEX |
| 1 | 7 | MS1230 | VENT,R SD |
| 1 | 6 | MS1226 | BRKT, TOP COV |
| 10 | 5 | LWS03MRN | WASH.,LK,SPLIT |
| 2 | 4 | LWE06MRN | WASH.,LK,EXT |
| 9 | 3 | LWE04MRN | WASH.,LK,EXT |
| 1 | 2 | LD398/MS1225 | PL,SIDE,R |
| 5 | 1 | FS102-1 | LOCKSPRING |

| | | | | | | | | | | | | |
|---|-------------|------|---------|--------|---------|------------|--|----------|---------------------|--|--------|--|
| | | | | | | | REQ. ITEM | PART NO. | BUDETTI DESCRIPTION | | SYMBOL | |
| | | | | | | | THE TECHNICAL MATERIEL CORP. MAMARONECK. NEW YORK | | | | | |
| A COMPLETELY REVISED | | | | | | | STOCK SIZE | | | | | |
| ORIGINAL RELEASE FOR PRODUCTION | | | | | | | PL ASSY, R SD | | | | | |
| SYM | DESCRIPTION | DATE | CH. NO. | DRAFTS | CHECKER | ENG. APP. | MATERIAL | | | | | |
| UNLESS OTHERWISE SPECIFIED DIMENSIONS ARE IN INCHES AND INCLUDE CHEMICALLY APPLIED OR PLATED FINISHES | | | | | | SCALE | ENG COORD | | | | | |
| DECIMALS .X ± .05 .XX ± .01 .XXX ± .005 | | | | | | TOLERANCES | 8/6/65 | | | | | |
| FRACTIONS ± 1/64 ANGLES ± 0° 30' | | | | | | CODE | DRAWN | | | | | |
| | | | | | | | CHECKED | | | | | |
| | | | | | | | FINAL APPROVAL | | | | | |
| | | | | | | | A3456 | | | | | |
| | | | | | | | FINISH & SPEC. NO. | | | | | |
| | | | | | | | ELEC. DES. APP. MECH. DES. APP. | | | | | |

| SYMBOL(S) | ITEM NO. | USED TO MOUNT | QTY | REQ. PER UNIT | USED ON | | | A3457 | B |
|-----------|----------|---------------|-----|---------------|---------------|------------|-----------------|-------|---|
| | | | | | MODEL | ASS'Y. NO. | DATE | | |
| | 1 | | | 1 | PSP-350B | A5084 | 8/6/65 | | |
| | 1 | | | 1 | PSP-350A | A3455 | | | |
| XF101,102 | 1 | | 2 | | | | | | |
| | 3 | SW215 | 2 | | | | | | |
| | | SW298 | 4 | | | | | | |
| S103 | 4 | | 1 | | | | | | |
| CB102 | 5 | | 1 | | | | | | |
| CB101 | 6 | | 1 | | | | | | |
| | 7 | TS124-1 WRG | 2 | | | | | | |
| | | TS124-2 WRG | 2 | | | | | | |
| | | TS124-6 WRG | 2 | | | | | | |
| | 8 | SW215 WRG | 4 | | | | | | |
| | | SW298 WRG | 4 | | | | | | |
| XDS104 | 9 | | 1 | | | | | | |
| XDS102 | 10 | | 1 | | | | | | |
| XDS101 | 11 | | 1 | | | | | | |
| XDS103 | 12 | | 1 | | | | | | |
| DS104 | 13 | | 1 | | | | | | |
| DS101,2,3 | 14 | | 3 | | | | | | |
| | 15 | ST12A | | 1 | MS4796 | | BRKT, COV SPT | | |
| | | | | 3 | BI102-3 | | LAMP, INCAND | | |
| | | | | 1 | BI100-51 | | LAMP, GLOW | | |
| | | | | 1 | TS124-6 | | LIGHT, IND-YEL | | |
| | | | | 1 | TS124-2 | | LIGHT, IND-GRN | | |
| | | | | 1 | TS124-1 | | LIGHT, IND-RED | | |
| | | | | 1 | TS106-1 | | LIGHT, IND-RED | | |
| | | | | 8 | TE104-4 | | TERM., LUG-LKG | | |
| | | | | 6 | TE104-2 | | TERM., LUG-LKG | | |
| | | | | 1 | SW298 | | CKT BKR-DPST | | |
| | | | | 1 | SW215 | | CKT BKR-SPST | | |
| | | | | 1 | ST12A | | SW, TOGGLE-SPST | | |
| | | | | 6 | SCFP0632BN5 | | SCR, MACH | | |
| | | | | 1 | LD1407/MS3595 | | PNL, FRONT | | |
| | | | | 2 | FH103 | | FUSE HOLDER | | |

| REQ. | ITEM | PART NO. | DESCRIPTION | SYMBOL |
|---|---------------------------------|---|-------------|-----------|
| | | | | |
| B | IT, 15 ADDED BOTH COLS. | 11-30-65 | 15258 | JCB |
| A | COMPLETELY REVISED | 8/31/65 | 14746 | JC |
| | ORIGINAL RELEASE FOR PRODUCTION | 8/24/65 | | JW |
| SYM | DESCRIPTION | DATE | CH. NO. | DRAFTS |
| | | | | CHECKER |
| | | | | ENG. APP. |
| UNLESS OTHERWISE SPECIFIED DIMENSIONS ARE IN INCHES AND INCLUDE CHEMICALLY APPLIED OR PLATED FINISHES | | SCALE | | |
| DECIMALS .X ± .05 .XX ± .01 .XXX ± .005 | | FRACTIONS ± 1/64 ANGLES ± 0° 30' | | |
| TOLERANCES | | CODE | | |
| | | FINISH & SPEC. NO. | | |
| | | ELEC. DES. APP. | | |
| | | MECH. DES. APP. | | |
| | | A3457 | | |
| | | B | | |

| SYMBOL(S) | ITEM NO. | USED TO MOUNT | QTY |
|-----------|----------|---------------|-----|
|-----------|----------|---------------|-----|

| REQ. PER UNIT | USED ON | | |
|---------------|----------|------------|--------|
| | MODEL | ASS'Y. NO. | DATE |
| 1 | PSP-350B | A5084 | 8/6/65 |
| 1 | PSP-350A | A345E | |

A3460

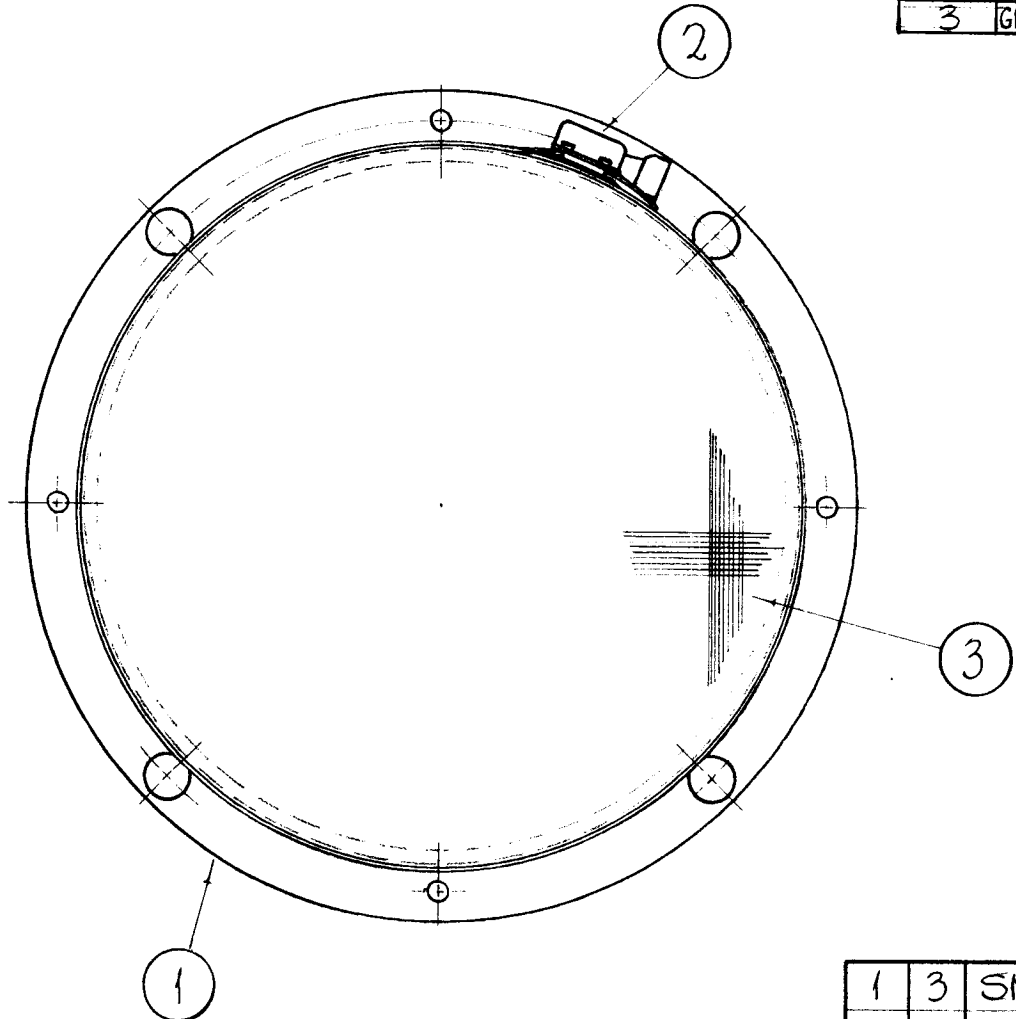
A

| | | | |
|------|----|---------|----|
| C103 | 1 | | 1 |
| C108 | 2 | | 1 |
| | 4 | CE63 | 1 |
| | | CP53 | 1 |
| | | MS1226 | 2 |
| | 5 | FS102-1 | 10 |
| | 8 | FS102-1 | 10 |
| | 9 | MS1226 | 2 |
| R117 | 10 | | 1 |
| | 11 | CE63 | 2 |
| | 12 | CP53 | 2 |
| | 13 | MS1226 | 2 |
| | 14 | FS102-1 | 10 |
| | 15 | CE63 | 1 |
| | | CP53 | 1 |

| | | | |
|----|----|--------------|-------------------|
| 2 | 15 | TE104-2 | TERM., LUG-LKG |
| 10 | 14 | SCFP0348BN5 | SCR, MACH |
| 2 | 13 | SCBP0632BN6 | SCR, MACH |
| 2 | 12 | SCBP0632BN5 | SCR, MACH |
| 2 | 11 | SCBP0632BN4 | SCR, MACH |
| 1 | 10 | RC42GF430J | RES, FXD, COMP |
| 2 | 9 | NTH0632BN8 | NUT, PLN, HEX |
| 10 | 8 | NTH0348BN6 | NUT, PLN, HEX |
| 1 | 7 | MS10493 | PL, SD, L |
| 1 | 6 | MS1226 | BRKT, TOP COV |
| 5 | 5 | LWS03MRN | WASH., LK, SPLIT |
| 4 | 4 | LWE06MRN | WASH., LK, EXT |
| 5 | 3 | FS102-1 | LOCKSPRING |
| 1 | 2 | CP53B1EF205K | CAP., FXD, P |
| 1 | 1 | CE63C500G | CAP., FXD, ELECT. |

| SYM | DESCRIPTION | DATE | CH. NO. | DRAFTS | CHECKER | ENG. APP. | REQ. ITEM | PART NO. | BUDETTI | DESCRIPTION | SYMBOL | |
|---|---------------------------------|------------------------------|---------|------------|-----------|--------------------|---------------------------------|-----------------|--|-----------------|-----------------|--|
| | | | | | | | | | THE TECHNICAL MATERIEL CORP. MAMARONECK, NEW YORK PL ASSY, L SD | | | |
| A | COMPLETELY REVISED | 8/31/65 | 14746 | 54 | <i>JG</i> | <i>QCB Z.J.</i> | STOCK SIZE | | | | | |
| Ø | ORIGINAL RELEASE FOR PRODUCTION | | | | <i>AV</i> | | MATERIAL | | | | | |
| | | | | | | | TYPE & TEMPER HEAT TREAT. SPEC. | | | | | |
| UNLESS OTHERWISE SPECIFIED DIMENSIONS ARE IN INCHES AND INCLUDE CHEMICALLY APPLIED OR PLATED FINISHES | | SCALE | | | | | ENG COORD | | DRAWN | | CHECKED | |
| | | | | | | | 8/6/65 | | <i>J. Gabriel</i> | | <i>11/11/65</i> | |
| | | | | | | | 8-25-65 | | | | FINAL APPROVAL | |
| DECIMALS | | FRACTIONS | | CODE | | FINISH & SPEC. NO. | | ELEC. DES. APP. | | MECH. DES. APP. | | |
| .X ± .05 .XX ± .01 .XXX ± .005 | | ± 1/64 ANGLES ± 0° 30' | | TOLERANCES | | | | | | A3460 | | |

| | | | | |
|---------------|-------------------|------------|----------|----------|
| REQ. PER UNIT | USED ON | | | A-3463 0 |
| | MODEL | ASS'Y. NO. | DATE | |
| 3 | GPT-200K (AX-395) | A-3463 | 12-16-63 | |

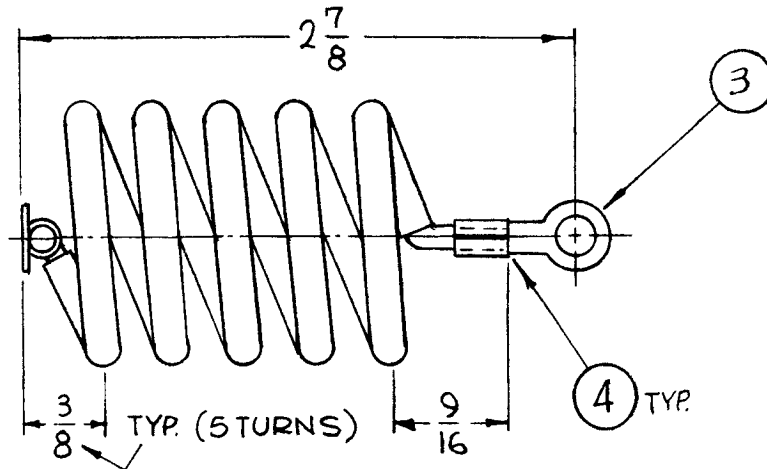
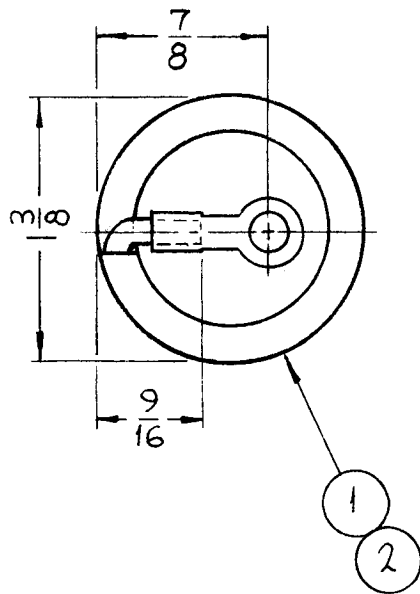


| | | | | |
|-----------|---|-----------|-------------------------|--------|
| 1 | 3 | SN-109 | SCREEN, SHIELD R.F. FAN | |
| 1 | 2 | CU-129-19 | CLAMP, HOSE | |
| 1 | 1 | MS-3340 | SHIELD, FAN R.F. | |
| REQ. ITEM | | PART NO. | F. BUDETTI DESCRIPTION | SYMBOL |

| | | | | | | |
|---|------------------|---|---------|--------|---------|-----------|
| 0 | ORIGINAL RELEASE | 5.18.64 | | ASB | | |
| SYM | DESCRIPTION | DATE | CH. NO. | DRAFTS | CHECKER | ENG. APP. |
| UNLESS OTHERWISE SPECIFIED DIMENSIONS ARE IN INCHES AND INCLUDE CHEMICALLY APPLIED OR PLATED FINISHES | | SCALE 1/2" = 1" | | | | |
| DECIMALS .X ± .05 .XX ± .01 .XXX ± .005 | TOLERANCES | FRACTIONS ± 1/64 ANGLES ± 0° 30' | CODE | | | |

| | | | | |
|--------------------|-------------------|--|-----------------|----------------|
| STOCK SIZE | | THE TECHNICAL MATERIEL CORP. MAMARONECK, NEW YORK | | |
| | | ASSY. SHIELD, FAN R.F. | | |
| MATERIAL | | John C Biele | | |
| TYPE & TEMPER | HEAT TREAT. SPEC. | DRAWN | CHECKED | FINAL APPROVAL |
| | | JB | AA | Roc |
| FINISH & SPEC. NO. | | ELEC. DES. APP. | MECH. DES. APP. | A-3463 0 |

| | | | | |
|---------------|------------------|------------|---------|----------|
| REQ. PER UNIT | USED ON | | | A 3466 0 |
| | MODEL | ASS'Y. NO. | DATE | |
| 1 | GPT-200K(AT-105) | A-2765 | 4-30-64 | |

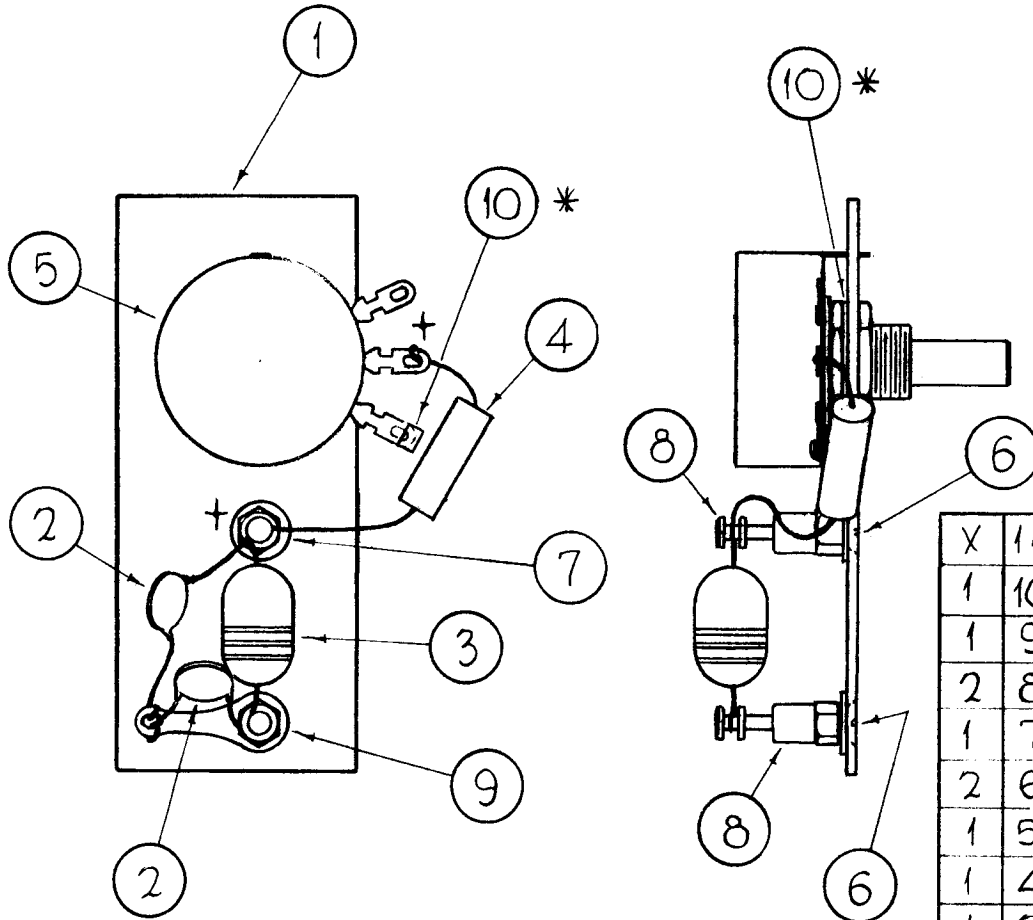


| | | | | |
|---|---|------------|-----------------------------|--------------|
| X | 4 | BS-100 | SOLDER, SOFT | |
| | 2 | 3 | TE-141-3 | TERMINAL LUG |
| X | 2 | PX-370-8-7 | INSULATION SLEEVING, TEFLON | NATURAL |
| X | 1 | TU-100-2S | TUBING, COPPER | |

| | | | | | | |
|---|-------------|---|-----------|--------|---------|-----------|
| ○ ORIGINAL RELEASE FOR PRODUCTION | 5-28-64 | ○ | A.M. | | | |
| SYM | DESCRIPTION | DATE | CH. NO. | DRAFTS | CHECKER | ENG. APP. |
| UNLESS OTHERWISE SPECIFIED DIMENSIONS ARE IN INCHES AND INCLUDE CHEMICALLY APPLIED OR PLATED FINISHES | | SCALE | 1"=1" | | | |
| DECIMALS .X ± .05 .XX ± .01 .XXX ± .005 | TOLERANCES | FRACTIONS ± 1/64 ANGLES ± 0° 30' | CODE A | | | |

| | | | | |
|--------------------|-------------------|--|---------------|---------------------|
| REQ. ITEM | PART NO. | F. BUDETTI | DESCRIPTION | SYMB L |
| STOCK SIZE | | THE TECHNICAL MATERIEL CORP. MAMARONECK, NEW YORK | | |
| MATERIAL | | CL 312 ASSEMBLY | | |
| TYPE & TEMPER | HEAT TREAT. SPEC. | DRAWN | CHECKED | FINAL APPROVAL |
| FINISH & SPEC. NO. | | SRG | aa. <i>Re</i> | <i>OR</i> <i>ak</i> |
| | | A 3466 | | 0 |

| | | | | |
|---------------|----------|------------|---------|----------|
| REQ. PER UNIT | USED ON | | | A-3468 A |
| | MODEL | ASS'Y. NO. | DATE | |
| 1 | GPT-200K | AX-396 | 1-18-64 | |



* WHEN MTG. ITEM NO. 10, BEND AROUND TERMINAL OF ITEM NO. 5 AS SHOWN AND CUT EXCESS IF NECESSARY.

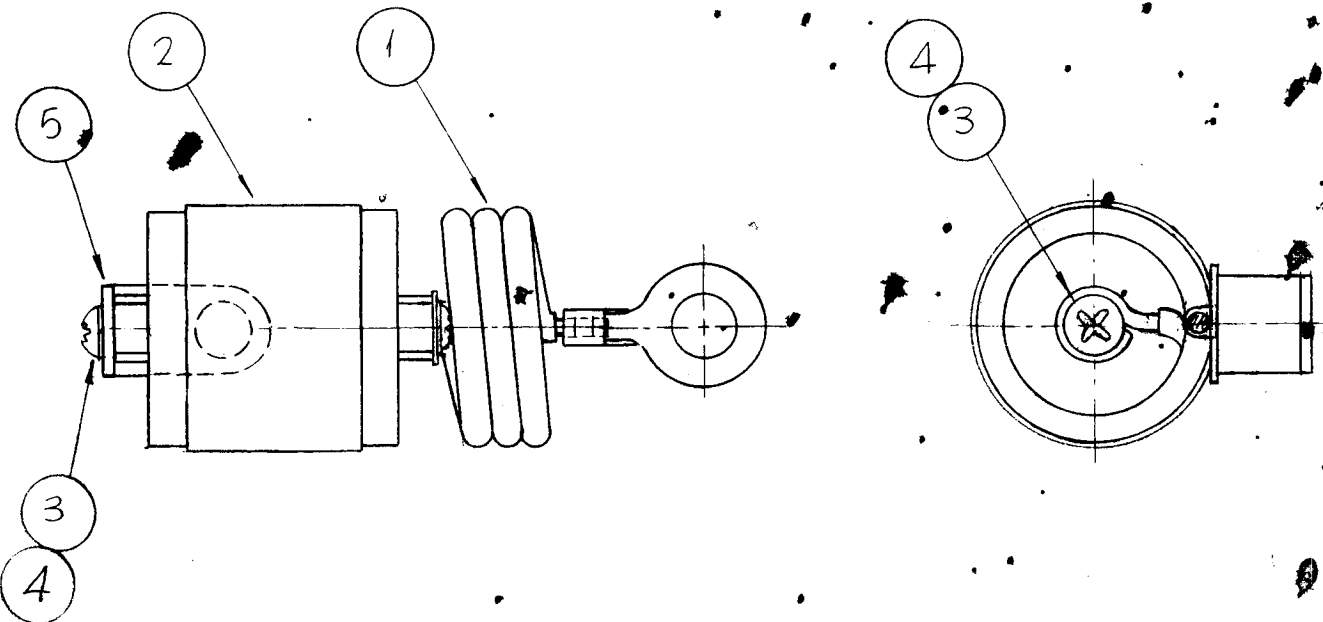
+ SOLDER AT JUNCTION OF ITEMS 2, 3, 4 AND ALSO OTHER END OF ITEM NO. 4 MOUNTING TO TERMINAL OF ITEM NO. 5, ONLY.

| | | | | |
|---|----|-----------------|--------------------------------|----------------|
| X | 11 | BS-100 | SOLDER, SOFT | |
| 1 | 10 | TE-111-2 | TERMINAL, LUG | |
| 1 | 9 | TE-104-1 | TERMINAL, LUG | |
| 2 | 8 | TE-102-2 | TERMINAL, STUD, INSUL | |
| 1 | 7 | LW104MRN | LOCKWASHER, INTERNAL TOOTH | |
| 2 | 6 | SCFP0440BN4 | SCREW, MACHINE | |
| 1 | 5 | RV4NAYS253A | RESISTOR, VARIABLE, COMP. | R5402 |
| 1 | 4 | RC42GF182K | RESISTOR, FIXED, COMPOSITION | R5403 |
| 1 | 3 | CL-140-1 | COIL, R.F. FIXED | L5401 |
| 2 | 2 | CC-100-29 | CAPACITOR, FIXED, CERAMIC DISC | C5401 C5402 |
| 1 | 1 | LD-1263/MS 3493 | PLATE, COMPONENT MTG. | |

| REQ. ITEM | PART NO. | F. BUDETTI | DESCRIPTION | SYMBOL |
|---|---|---------------------------------|-------------|--------|
| THE TECHNICAL MATERIEL CORP. MAMARONECK, NEW YORK | | | | |
| OUTPUT CONTROL RESISTOR ASSEMBLY | | | | |
| UNLESS OTHERWISE SPECIFIED DIMENSIONS ARE IN INCHES AND INCLUDE CHEMICALLY APPLIED OR PLATED FINISHES | | SCALE | | |
| DECIMALS .X ± .05 .XX ± .01 .XXX ± .005 | FRACTIONS ± 1/64 ANGLES ± 0° 30' | CODE A | | |
| TOLERANCES | | FINISH & SPEC. NO. | | |
| | | ELEC. DES. APP. MECH. DES. APP. | | |
| | | A-3468 A | | |

| | | | |
|---------------|-------------|------------|---------|
| REQ. PER UNIT | USED ON | | |
| | MODEL | ASS'Y. NO. | DATE |
| | GPT-40K(14) | | 12-2-63 |

A-3469 \emptyset

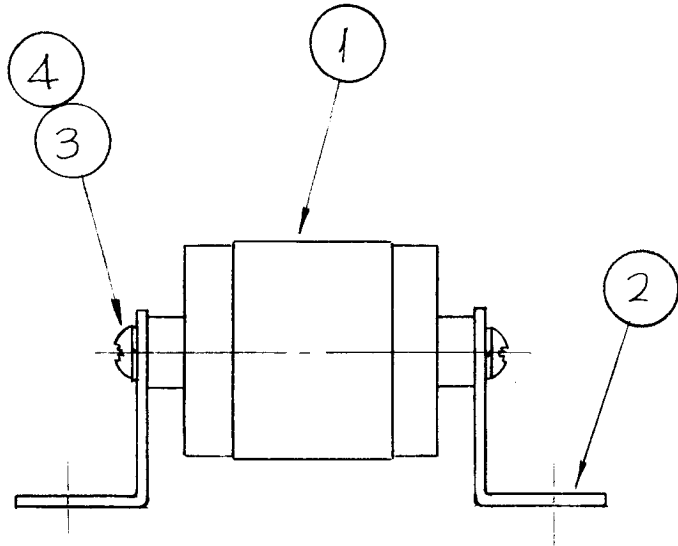


| | | | | |
|---|---|-------------|---------------------------------|-------|
| 1 | 5 | MS-2665-16 | BRACKET | |
| 2 | 4 | LWS10MRN | LOCKWASHER, SPLIT | |
| 2 | 3 | SCBP1032BN4 | SCREW, MACHINE | |
| 1 | 2 | CC-109-24 | CAPACITOR, FIXED, CERAMIC, H.V. | 07334 |
| 1 | 1 | CL-325 | COIL, ELECTRICAL | L7319 |

| | | | | | | |
|---|---------------------------------|---|---------|--------|---------|-----------|
| SYM | DESCRIPTION | DATE | CH. NO. | DRAFTS | CHECKER | ENG. APP. |
| \emptyset | ORIGINAL RELEASE FOR PRODUCTION | 3-3-64 | | | A.M. | |
| UNLESS OTHERWISE SPECIFIED DIMENSIONS ARE IN INCHES AND INCLUDE CHEMICALLY APPLIED OR PLATED FINISHES | | SCALE | 1"=1" | | | |
| DECIMALS .X \pm .05 .XX \pm .01 .XXX \pm .005 | TOLERANCES | FRACTIONS \pm 1/64 ANGLES \pm 0° 30' | CODE | A. | | |

| | | | | |
|--------------------|-------------------|--|-----------------|--------------------|
| REQ. ITEM | PART NO. | F. BUDETTI | DESCRIPTION | SYMB L |
| STOCK SIZE | | THE TECHNICAL MATERIEL CORP. MAMARONECK, NEW YORK | | |
| MATERIAL | | COIL & CAPACITOR ASS'Y | | |
| TYPE & TEMPER | HEAT TREAT. SPEC. | DRAWN | CHECKED | FINAL APPROVAL |
| FINISH & SPEC. NO. | | SRG | JCS | RAC |
| | | 023 | LB | A-3469 \emptyset |
| | | ELEC. DES. APP. | MECH. DES. APP. | |

| | | | | |
|---------------|------------|------------|---------|----------|
| REQ. PER UNIT | USED ON | | | A-3470 0 |
| | MODEL | ASS'Y. NO. | DATE | |
| 1 | GPTAOK(1)4 | | 12-4-63 | |



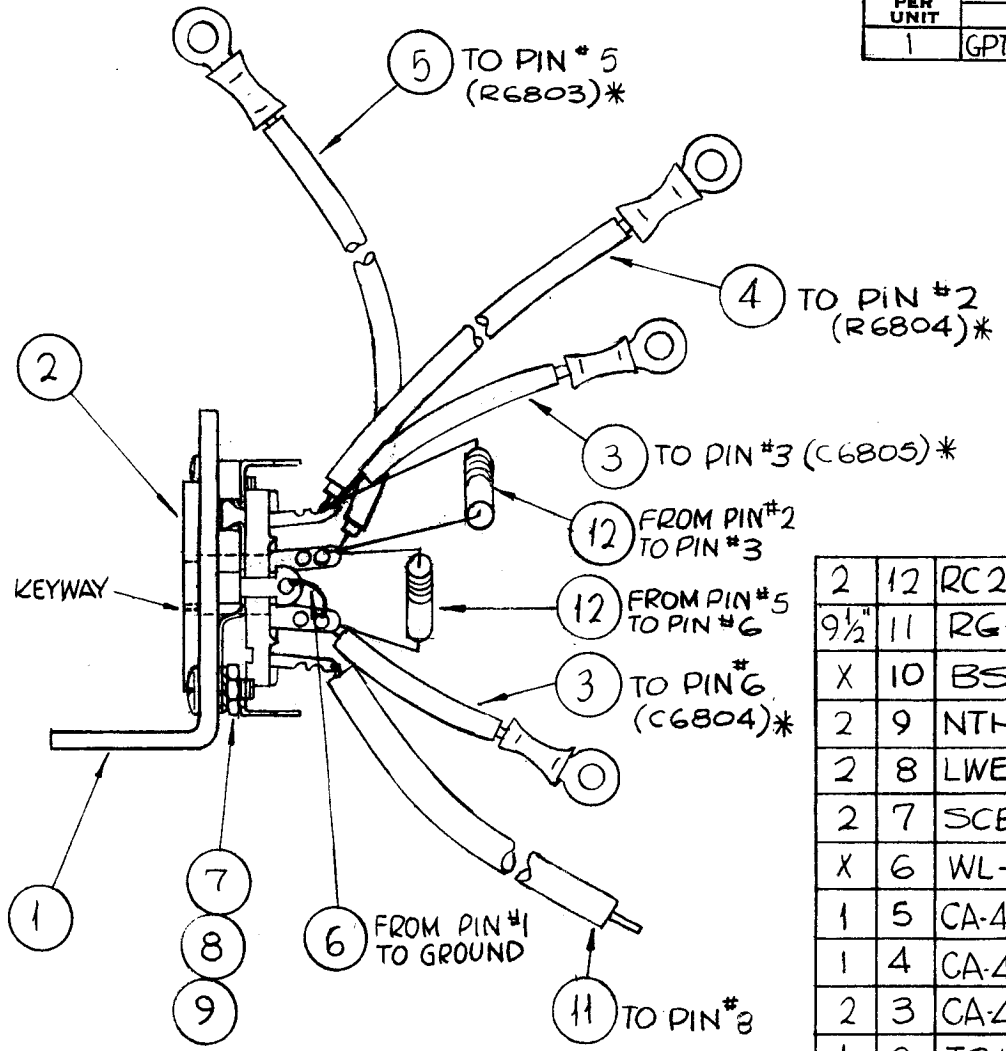
| | | | | |
|---|---|-------------|---------------------------------|-------|
| 2 | 4 | LWS10MRN | LOCKWASHER, SPLIT | |
| 2 | 3 | SCBPI032BN4 | SCREW, MACHINE | |
| 2 | 2 | MS-2665-17 | BRACKET | |
| 1 | 1 | CC-109-24 | CAPACITOR, FIXED, CERAMIC, H.V. | C7333 |

| REQ. | ITEM | PART NO. | F. BUDETTI | DESCRIPTION | SYMBOL |
|--------------------|------|----------|--|-------------|--------|
| STOCK SIZE | | | THE TECHNICAL MATERIEL CORP. MAMARONECK. NEW YORK | | |
| | | | CAPACITOR ASS'Y | | |
| MATERIAL | | | | | |
| TYPE & TEMPER | | | DRAWN | | |
| HEAT TREAT. SPEC. | | | CHECKED | | |
| FINISH & SPEC. NO. | | | FINAL APPROVAL | | |

| | | | | | |
|---|---------------------------------|---|-----------|--------|---------|
| 0 | ORIGINAL RELEASE FOR PRODUCTION | 3-3-64 | A.M. | | |
| SYM | DESCRIPTION | DATE | CH. NO. | DRAFTS | CHECKER |
| UNLESS OTHERWISE SPECIFIED DIMENSIONS ARE IN INCHES AND INCLUDE CHEMICALLY APPLIED OR PLATED FINISHES | | SCALE 1" = 1" | | | |
| DECIMALS .X ± .05 .XX ± .01 .XXX ± .005 | TOLERANCES | FRACTIONS ± 1/64 ANGLES ± 0° 30' | CODE A | | |

| | | |
|-----------------|-----------------|------------|
| SRG | JCS | Rec 3/1/64 |
| DB | EB | A-3470 0 |
| ELEC. DES. APP. | MECH. DES. APP. | |

| | | | | |
|---------------|------------------|------------|---------|----------|
| REQ. PER UNIT | USED ON | | | A-3473 B |
| | MODEL | ASS'Y. NO. | DATE | |
| 1 | GPT-200K(AF-109) | A-2765 | 1-21-64 | |

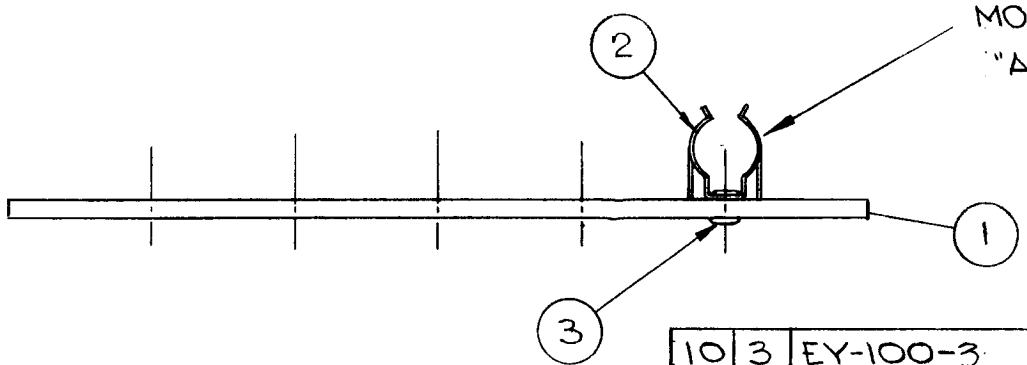
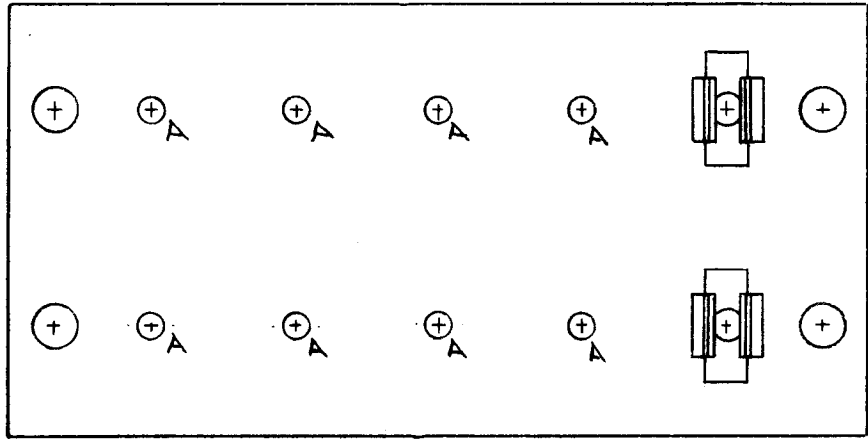


| | | | | |
|--------|----|------------------|------------------------------|----------------|
| 2 | 12 | RC20GF101K | RESISTOR, FIXED, COMPOSITION | RC807 R6808 |
| 9 1/2" | 11 | RG-174/U | CABLE, COAXIAL | |
| X | 10 | BS-100 | SOLDER, SOFT | |
| 2 | 9 | NTH0632BN10 | NUT, HEXAGON | |
| 2 | 8 | LWE06MRN | LOCKWASHER, EXTERNAL TOOTH | |
| 2 | 7 | SCBP0632BN5 | SCREW, MACHINE | |
| X | 6 | WL-100-3 | WIRE, BUSS BAR | |
| 1 | 5 | CA-409-123-6.500 | CABLE ASS'Y, JUMPER | |
| 1 | 4 | CA-409-124-2.500 | CABLE ASS'Y, JUMPER | |
| 2 | 3 | CA-409-125-1.500 | CABLE ASS'Y, JUMPER | |
| 1 | 2 | TS101P01 | SOCKET, ELECTRON TUBE | |
| 1 | 1 | LD-1376/MS-3217 | BRACKET, COMPONENT MTG. | |

* NUMBERS LOCATED ON A-2765

| REQ. ITEM | PART NO. | F. BUDETTI | DESCRIPTION | SYMBOL | | | | | | | |
|---|---------------------------------|---|-------------|--------|--------------------|--------------------|----------|-------------------|--------------------|--------------------|----------------|
| B | TO PIN #8 WAS TO PIN #4 | 7-17-64 | 11868 | SRG | <i>[Signature]</i> | | | | | | |
| A | ITEM 12 WAS RC20GF102K | 6/9/64 | 11533 | A.M. | <i>@</i> | | | | | | |
| O | ORIGINAL RELEASE FOR PRODUCTION | 5-13-64 | O | A.M. | <i>[Signature]</i> | | | | | | |
| SYM | DESCRIPTION | DATE | CH. NO. | DRAFTS | CHECKER | ENG. APP. | MATERIAL | | | | |
| UNLESS OTHERWISE SPECIFIED DIMENSIONS ARE IN INCHES AND INCLUDE CHEMICALLY APPLIED OR PLATED FINISHES | | SCALE | | 1=1 | | SRG | | aa | <i>[Signature]</i> | | |
| DECIMALS .X ± .05 .XX ± .01 .XXX ± .005 | TOLERANCES | FRACTIONS ± 1/64 ANGLES ± 0° 30' | CODE | A | | TYPE & TEMPER | | HEAT TREAT. SPEC. | DRAWN | CHECKED | FINAL APPROVAL |
| | | | | | | | | | <i>[Signature]</i> | <i>[Signature]</i> | A-3473 B |
| | | | | | | FINISH & SPEC. NO. | | ELEC. DES. APP. | MECH. DES. APP. | | |

| | | | | |
|---------------|----------|------------|--------|---------|
| REQ. PER UNIT | USED ON | | | A-34750 |
| | MODEL | ASS'Y. NO. | DATE | |
| 1 | GPT-200K | AX-393 | 9-5-63 | |



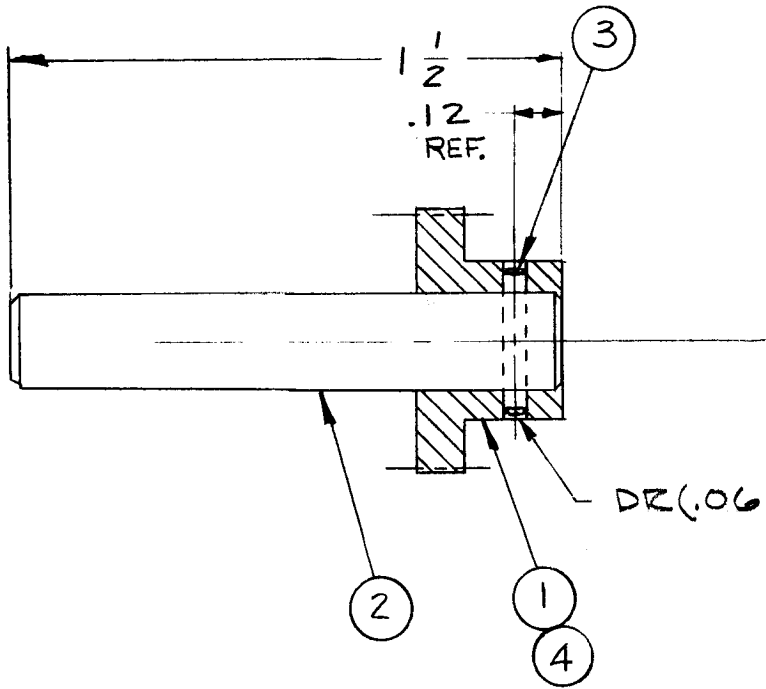
MOUNT AS SHOWN IN ALL "A" HOLES

| | | | | |
|-----------|---|---------------|-----------------|--------|
| 10 | 3 | EY-100-3 | EYELET | A |
| 10 | 2 | FC-102-3-XX-N | CLIP, COMPONENT | A |
| 1 | 1 | LD-1283 | PLATE, FUSE MTG | |
| REQ. ITEM | | PART NO. | DESCRIPTION | SYMBOL |

| | | | | | | |
|---|---------------------------------|---|-----------|--------|---------|-----------|
| 0 | ORIGINAL RELEASE FOR PRODUCTION | 3-264 | A.M. | | | |
| SYM | DESCRIPTION | DATE | CH. NO. | DRAFTS | CHECKER | ENG. APP. |
| UNLESS OTHERWISE SPECIFIED DIMENSIONS ARE IN INCHES AND INCLUDE CHEMICALLY APPLIED OR PLATED FINISHES | | SCALE | | | | |
| DECIMALS .X ± .05 .XX ± .01 .XXX ± .005 | TOLERANCES | FRACTIONS ± 1/64 ANGLES ± 0° 30' | CODE A | | | |

| | | | | |
|--------------------|-------------------|--|-----------------|----------------|
| STOCK SIZE | | THE TECHNICAL MATERIEL CORP. MAMARONECK, NEW YORK | | |
| MATERIAL | | FUSE MOUNTING ASSY | | |
| TYPE & TEMPER | HEAT TREAT. SPEC. | DRAWN | CHECKED | FINAL APPROVAL |
| FINISH & SPEC. NO. | | ELEC. DES. APP. | MECH. DES. APP. | A-34750 |

| | | | | |
|---------------|---------|------------|--------|----------|
| REQ. PER UNIT | USED ON | | | A-3486 A |
| | MODEL | ASS'Y. NO. | DATE | |
| 1 | HFRR-2 | A 3533 | 2-9-64 | |

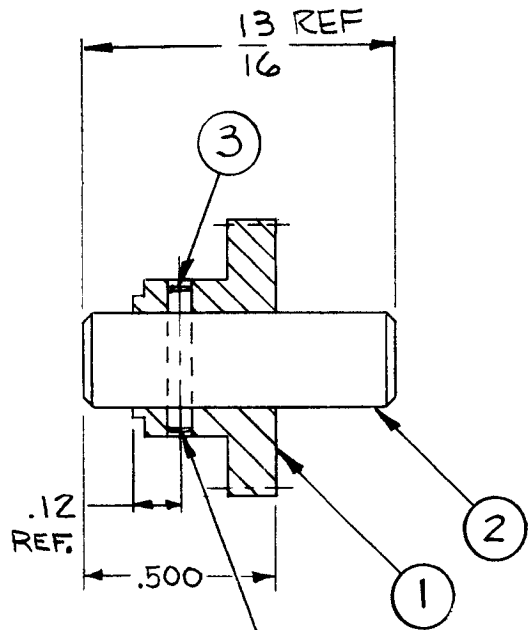


DR (.062-.065) DIA THRU & PIN WITH ITEM #3

| | | | | |
|---|---------------------------------|-------------------|------------------------------|---------|
| 1 | 4 | SLHC0632SS2 | SET SCREW | |
| 1 | 3 | PN59-062-6 | PIN, SPRING | |
| 1 | 2 | PM1051-RF-1500 | SHAFT | |
| 1 | 1 | GR 205-3 | GEAR | |
| REQ. ITEM | PART NO. | | DESCRIPTION | SYMBOL |
| A | ADD IT4 | | THE TECHNICAL MATERIEL CORP. | |
| Ø | ORIGINAL RELEASE FOR PRODUCTION | | MAMARONECK, NEW YORK | |
| X | EXP. RELEASE | | GEAR ASSY (TURRET) | |
| SYM | DESCRIPTION | DATE | CH. NO. | DRAFTS |
| | | 2-26-66 | 16886 | RME |
| | | 8-13-64 | | del |
| | | 3/5/64 | + | del @ |
| UNLESS OTHERWISE SPECIFIED DIMENSIONS ARE IN INCHES AND INCLUDE CHEMICALLY APPLIED OR PLATED FINISHES | | SCALE 2:1 | | |
| DECIMALS | FRACTIONS | CODE | | |
| .X ± .05 | ± 1/64 | A | | |
| .XX ± .01 | ANGLES | | | |
| .XXX ± .005 | ± 0° 30' | | | |
| TOLERANCES | | | | |
| TYPE & TEMPER | | HEAT TREAT. SPEC. | DRAWN | CHECKED |
| FINISH & SPEC. NO. | | | T. Krueger @ 3-3-64 | RIL |
| ELEC. DES. APP. | | MECH. DES. APP. | A 3486 A | |

| REQ. PER UNIT | USED ON | | |
|---------------|---------|------------|--------|
| | MODEL | ASS'Y. NO. | DATE |
| 1 | HFR-2 | A3548 | 2-9-64 |
| 1 | HFR-2 | A3533 | |

A 3487 C



DR(.062-.065) DIA THRU # PIN WITH ITEM #3

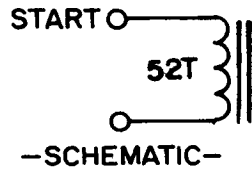
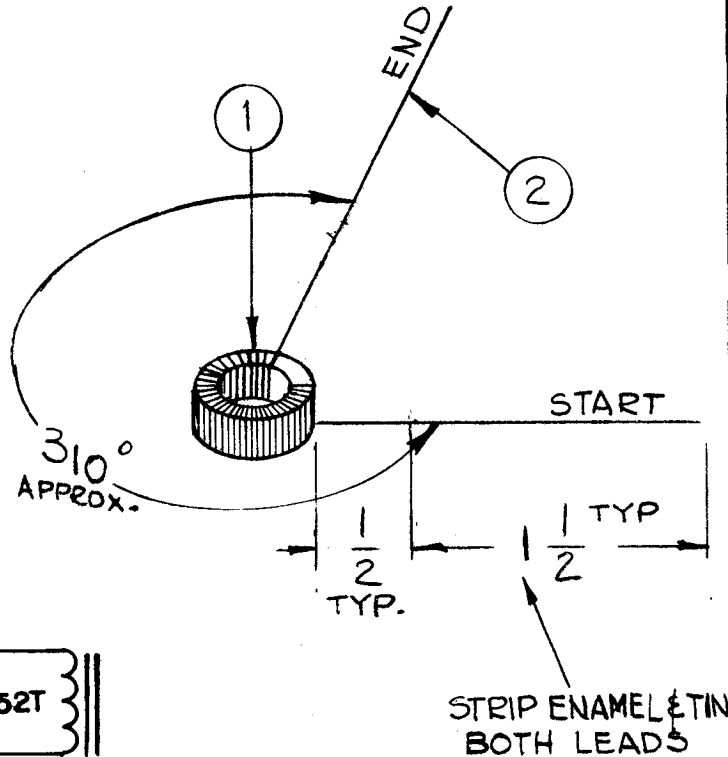
| SYM | DESCRIPTION | DATE | CH. NO. | DRAFTS | CHECKER | ENG. APP. | REQ. ITEM | PART NO. | T. KRUY DESCRIPTION | SYMBOL |
|---|---|----------|---------|-------------|-------------|-------------|---|---------------|--|--------|
| C | IT. 3 WAS PN 59-062-6 ADD REF TO .12 | 9.26.66 | 16886 | RME | JCB | [Signature] | 1 3 | PN 59-062-8 | PIN, SPRING | |
| B | IT. 2 WAS PM1051-RF, 812 | 12.31.64 | 13149 | 98 | [Signature] | [Signature] | 1 2 | PM1051RF0.812 | SHAFT | |
| A | ITEM 1 WAS GR 205-5 | 11/2/64 | 12851 | [Signature] | [Signature] | [Signature] | 1 1 | GR 205-1A | GEAR | |
| Ø | CRITICAL PART FOR PRODUCTION | 8/14/64 | | [Signature] | | | | | | |
| X | EXP. RELEASE | 3/3/64 | | [Signature] | [Signature] | | | | | |
| UNLESS OTHERWISE SPECIFIED DIMENSIONS ARE IN INCHES AND INCLUDE CHEMICALLY APPLIED OR PLATED FINISHES | | | | | | | SCALE 2:1 | | THE TECHNICAL MATERIEL CORP. MAMARONECK, NEW YORK | |
| DECIMALS .X ± .05 .XX ± .01 .XXX ± .005 | | | | | | | FRACTIONS ± 1/64 ANGLES ± 0° 30' | | GEAR ASSY (TURRET) | |
| TOLERANCES | | | | | | | CODE A | | MATERIAL | |
| TYPE & TEMPER | | | | | | | HEAT TREAT. SPEC. | | DRAWN [Signature] @ 3-3-64 | |
| FINISH & SPEC. NO. | | | | | | | ELEC. DES. APP. | | MECH. DES. APP. [Signature] | |
| | | | | | | | | | A 3487 C | |

THE CONTENTS OF THIS DRAWING ARE THE EXCLUSIVE PROPERTY OF THE TECHNICAL MATERIEL CORP. ITS UNAUTHORIZED USE OR REPRODUCTION IN WHOLE OR IN PART IS STRICTLY FORBIDDEN.

| REQ. PER UNIT | USED ON | | |
|---------------|---------|------------|---------|
| | MODEL | ASS'Y. NO. | DATE |
| 1 | HFR-1A | A 3492 | 2-24-64 |
| 1 | HFR-2 | A 3492 | |

A 3491

A



~PROCEDURE~

- 1-WI-141-29.9 (ITEM 2) CLOSE WOUND APPROX. 52 TURNS IN THE DIRECTION SHOWN.
- 2~REMOVE OR ADD TURNS TO MEET IND. SHOWN IN TEST SPEC.
- 3~BAKE FOR 1/2 HOUR AT 215°F TO REMOVE MOISTURE.
- 4~COAT COIL & CORE WITH GL-102 (ITEM 3) AND BAKE FOR 1/2 HOUR AT 215°F.

~TEST SPECIFICATIONS~

L=11.0 uh ± 0.2 uh
 Q=190 MIN @ 4.25 MC
 C_{DIST}=0.744f (REF ONLY)

~SYMBOL USED~

L1012

NOTE:

USE TMC COIL STD FOR ELECT. TEST REF.

| | | | |
|---|---|-------------|--------------------------|
| X | 3 | GL 102 | Q. MAX |
| X | 2 | WI 141-28-9 | MAGNET WIRE, SINGLE # 28 |
| 1 | 1 | CI 127-1 | CORE, TOROID |

| A | Q" WAS 200. ADDED NOTE | 1-6-67 | 17616 | WFO | JCS | |
|-----|----------------------------------|---------|---------|---------|---------|-----------|
| Q | ORIGINAL RELEASE FOR PRODUCTION | 8-13-64 | Q | Ben | | |
| X1 | DN PROCEDURE" NOTE (1) CLARIFIED | 6-22-64 | | 6-22-64 | | |
| X | EXPERIMENTAL RELEASE | 3/25/64 | | Eden | | |
| SYM | DESCRIPTION | DATE | CH. NO. | DRAFTS | CHECKER | ENG. APP. |

| REQ. | ITEM | PART NO. | ANGER | DESCRIPTION | SYMBOL |
|------|------|----------|--------|--|--------|
| | | | | THE TECHNICAL MATERIEL CORP. MAMARONECK, NEW YORK | |
| | | | | CL 330 ASS'Y. (COIL, RF TOROID, BAND #1 OSC.) | |
| | | | G.D.L | @ | RJC |
| | | | Janger | | |
| | | | | | A 3491 |
| | | | | | A |

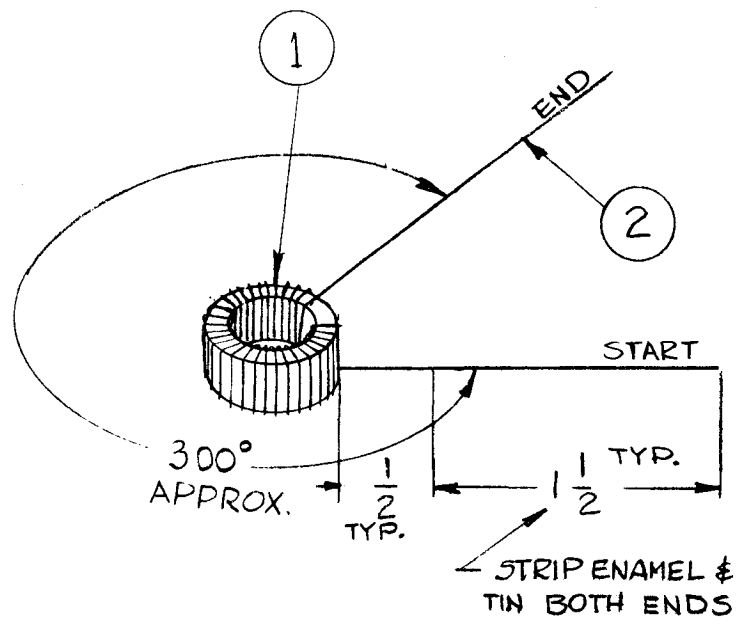
UNLESS OTHERWISE SPECIFIED:
 DIMENSIONS ARE IN INCHES
 TOLERANCES ON
 FRAC. ± 1/64 DEC. ± .005 ANGLES ± 1/2°

SCALE: DO NOT SCALE
 MAXIMUM ALLOWABLE TOLERANCES HAVE BEEN DETERMINED AND ANY DEVIATIONS WILL BE CAUSE FOR REJECTION.
 REMOVE ALL BURRS AND SHARP EDGES

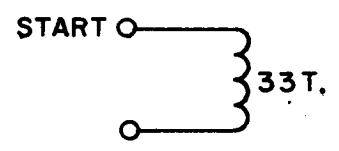
THE CONTENTS OF THIS DRAWING ARE THE EXCLUSIVE PROPERTY OF THE TECHNICAL MATERIEL CORP. ITS UNAUTHORIZED USE OR REPRODUCTION IN WHOLE OR IN PART IS STRICTLY FORBIDDEN.

| REQ. PER UNIT | USED ON | | |
|---------------|---------|------------|---------|
| | MODEL | ASS'Y. NO. | DATE |
| 1 | HFR-1A | A 3494 | 2-24-64 |
| 1 | HFR-2 | A 3494 | |

A 3493 A



SCHMATIC



— PROCEDURE —

- 1-APPROX. 33 TURNS CLOSE WOUND IN THE DIRECTION SHOWN.
- 2-REMOVE OR ADD TURNS TO MEET INDUCTANCE SHOWN IN TEST SPECS.
- 3-BAKE FOR 1/2 HR. AT 215°F TO REMOVE MOISTURE.
- 4-COAT COIL & CORE WITH GL-102 Q-MAX. AND BAKE FOR 1/2 HR AT 215°F.

— TEST SPECIFICATIONS —

*NOTE: USE TMC COIL STANDARDS FOR TEST REFERENCE.
 $L = 4.7 \mu h \pm 0.15 \mu h$
 $Q = 210 \text{ MIN. @ } 5.25 \text{ MC}$
 $C_{\text{dist}} = 0.7 \mu \text{uf. (REF ONLY)}$
 — SYMBOL USED —
 L1022

| | | | |
|---|---|-------------|-------------------------|
| X | 3 | GL 102 | Q-MAX. |
| X | 2 | WI 141-24-9 | MAGNET WIRE, SINGLE #24 |
| 1 | 1 | CI 127-1 | CORE, TOROID |

| SYM | DESCRIPTION | DATE | CH. NO. | DRAFTS | CHECKER | ENG. APP. |
|-----|---------------------------------|---------|---------|---------------|---------|---------------|
| A | NOTE ADDED | 1-12-67 | 17575 | RME | CDL | AM |
| Q | ORIGINAL RELEASE FOR PRODUCTION | 8-13-64 | Q | AM | | |
| X | EXPERIMENTAL RELEASE | | | | | |

UNLESS OTHERWISE SPECIFIED:
 DIMENSIONS ARE IN INCHES
 TOLERANCES ON
 FRAC. $\pm 1/64$ DEC. $\pm .005$ ANGLES $\pm 1/2^\circ$

SCALE: DO NOT SCALE

MAXIMUM ALLOWABLE TOLERANCES HAVE BEEN DETERMINED AND ANY DEVIATIONS WILL BE CAUSE FOR REJECTION. REMOVE ALL BURRS AND SHARP EDGES

| REQ. | ITEM | PART NO. | ANGER | DESCRIPTION | SYMBOL |
|------|------|----------|-------|--|--------|
| | | | | THE TECHNICAL MATERIEL CORP. MAMARONECK, NEW YORK | |
| | | | | CL 331 ASSEMBLY (COIL, RF, TOROID BAND#2 OSC.) | |
| | | | | G.D.L. | |
| | | | | J. Anger | |
| | | | | A 3493 | A |

THE CONTENTS OF THIS DRAWING ARE THE EXCLUSIVE PROPERTY OF THE TECHNICAL MATERIEL CORP. ITS UNAUTHORIZED USE OR REPRODUCTION IN WHOLE OR IN PART IS STRICTLY FORBIDDEN.

REQ. PER UNIT

USED ON

MODEL

ASS'Y. NO.

DATE

1

HFR-1A

A 3496

2-24-64

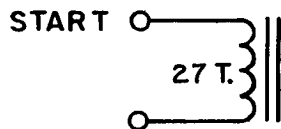
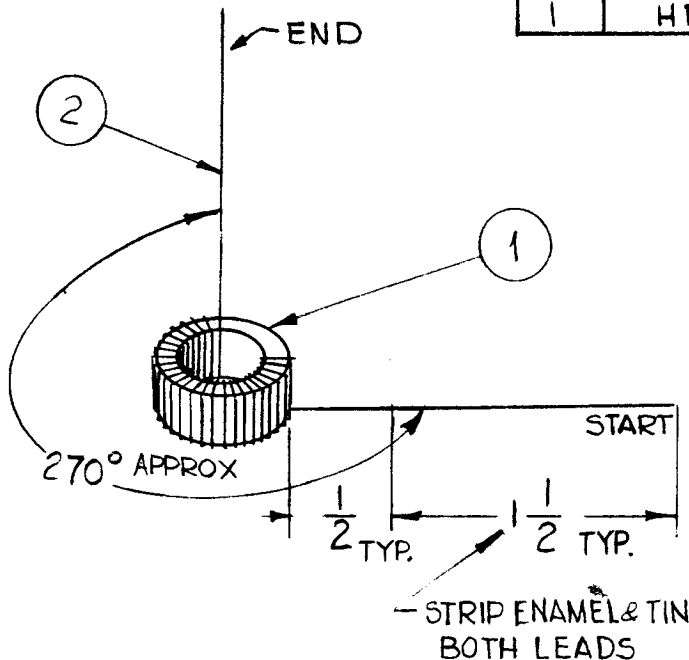
A 3495

A

1

HFR-2

A 3496



SCHEMATIC

— PROCEDURE —

- 1 - APPROX. 27 TURNS CLOSE WOUND IN THE DIRECTION SHOWN.
- 2 - REMOVE OR ADD TURNS TO MEET INDUCTANCE SHOWN IN TEST SPECS.
- 3 - BAKE FOR 1/2 HR. AT 215°F. TO REMOVE MOISTURE.
- 4 - COAT COIL & CORE WITH GL-102 Q-MAX AND BAKE FOR 1/2 HR. AT 215°F.

* NOTE: USE TMC COIL STANDARDS FOR TEST PROCEDURE.

— TEST SPECIFICATIONS —

$L = 3.16 \mu h \pm 0.1 \mu h$
 $Q = 185 \text{ MIN. AT } 6.75 \text{ MC.}$
 $C_{\text{dist}} = 0.7 \mu f \text{ (REF. ONLY)}$
 - SYMBOL USED -
 L1027

| | | | |
|---|---|-------------|-------------------------|
| X | 3 | GL 102 | Q-MAX |
| X | 2 | WI 141-24-9 | MAGNET WIRE, SINGLE #24 |
| 1 | 1 | CI 127-1 | CORE, TOROID |

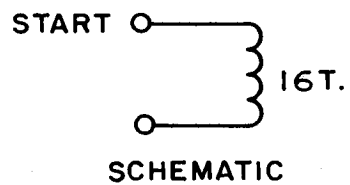
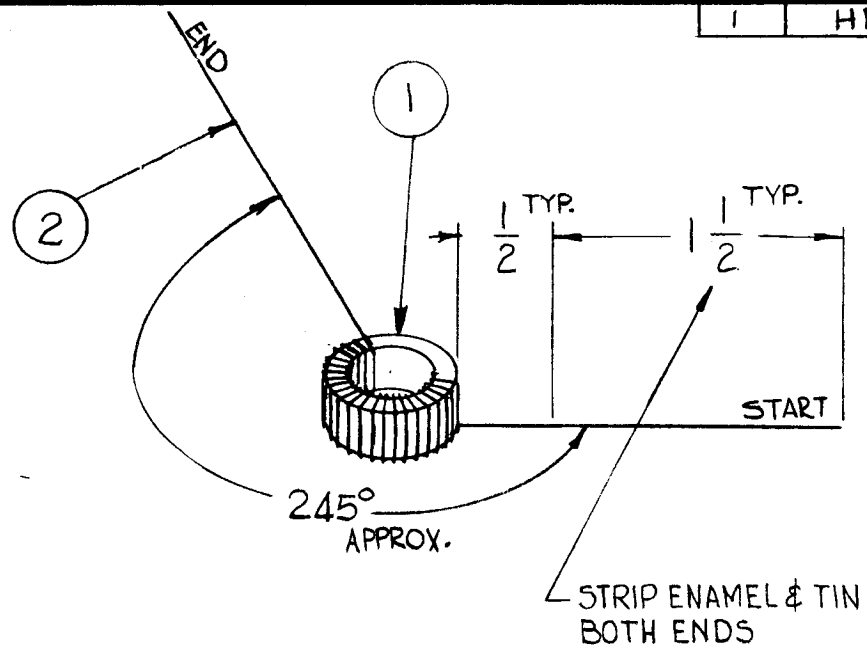
| | | | | | | |
|---|---------------------------------|--|---------|--------|---------|-----------|
| A | NOTE ADDED | 1-12-67 | 17575 | RME | G.D.L. | |
| Q | ORIGINAL RELEASE FOR PRODUCTION | 8-13-64 | Q | | | |
| X | EXPERIMENTAL RELEASE | 3/6/64 | | | | |
| SYM | DESCRIPTION | DATE | CH. NO. | DRAFTS | CHECKER | ENG. APP. |
| UNLESS OTHERWISE SPECIFIED: DIMENSIONS ARE IN INCHES TOLERANCES ON FRAC. $\pm 1/64$ DEC. $\pm .005$ ANGLES $\pm 1/2^\circ$ | | SCALE: DO NOT SCALE MAXIMUM ALLOWABLE TOLERANCES HAVE BEEN DETERMINED AND ANY DEVIATIONS WILL BE CAUSE FOR REJECTION. REMOVE ALL BURRS AND SHARP EDGES | | | | |

| | | | | | |
|------|------|----------|-----------------|--|----------|
| REQ. | ITEM | PART NO. | ANGER | DESCRIPTION | SYMBOL |
| | | | | THE TECHNICAL MATERIEL CORP. MAMARONECK, NEW YORK | |
| | | | | CL 332 ASS'Y (COIL, RF, TOROID BAND #3 OSC) | |
| | | | G.D.L. | @ | RTE |
| | | | J. Anger | | A 3495 A |
| | | | ELEC. DES. APP. | MECH. DES. APP. | |

THE CONTENTS OF THIS DRAWING ARE THE EXCLUSIVE PROPERTY OF THE TECHNICAL MATERIEL CORP. ITS UNAUTHORIZED USE OR REPRODUCTION IN WHOLE OR IN PART IS STRICTLY FORBIDDEN.

| REQ. PER UNIT | USED ON | | |
|---------------|---------|------------|---------|
| | MODEL | ASS'Y. NO. | DATE |
| 1 | HFR-1A | A 3498 | 2-24-64 |
| 1 | HFR-2 | A 3498 | |

A 3497 A



— PROCEDURE —

- 1 - WIND 16 TURNS EVENLY SPACED OVER A 245° ANGLE, WIND TURNS IN THE DIRECTION SHOWN
- 2 - PUSH TURNS TOGETHER OR SPREAD APART AS NEEDED TO MEET INDUCTANCE SHOWN IN TEST SPECS.
- 3 - BAKE FOR 1/2 HR. AT 215°F. TO REMOVE MOISTURE
- 4 - COAT COIL & CORE WITH GL-102 Q MAX. AND BAKE FOR 1/2 HR. AT 215°F.

* NOTE: USE TMC COIL STANDARDS FOR TEST REFERENCE.

— TEST SPECIFICATIONS —

Cdist = 0.3 μ f (REF ONLY)
 L = 1.13 μ h \pm 0.1
 Q = 185 MIN AT 8.75 MC.

SYMBOL USED
 L1032

| | | | |
|---|---|-------------|--------------------------|
| X | 3 | GL 102 | Q - MAX |
| X | 2 | WI 141-24-9 | MAGNET WIRE, SINGLE # 24 |
| 1 | 1 | CI 127-1 | CORE, TOROID |

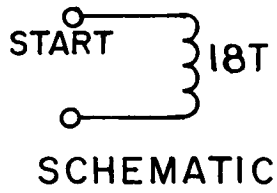
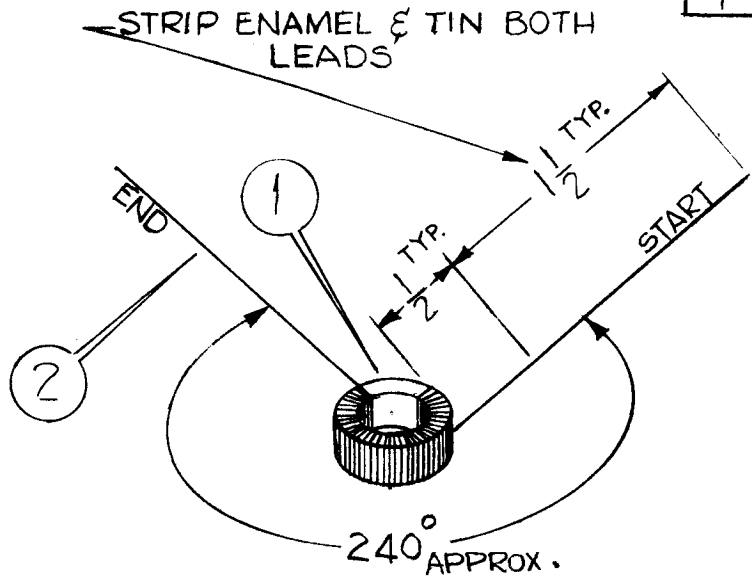
| SYM | DESCRIPTION | DATE | CH. NO. | DRAFTS | CHECKER | ENG. APP. |
|--|---------------------------------|---|---------|--------|---------|--------------------|
| A | NOTE ADDED | 1-12-67 | 17575 | RME | G.D.L | <i>[Signature]</i> |
| Q | ORIGINAL RELEASE FOR PRODUCTION | 8-13-64 | | | | |
| X | EXPERIMENTAL RELEASE | 3/26/64 | | | | |
| UNLESS OTHERWISE SPECIFIED: | | SCALE: DO NOT SCALE | | | | |
| DIMENSIONS ARE IN INCHES | | MAXIMUM ALLOWABLE TOLERANCES HAVE BEEN DETERMINED AND ANY DEVIATIONS WILL BE CAUSE FOR REJECTION. | | | | |
| TOLERANCES ON | | REMOVE ALL BURRS AND SHARP EDGES | | | | |
| FRAC. \pm 1/64 DEC. \pm .005 ANGLES \pm 1/2° | | | | | | |

| REQ. | ITEM | PART NO. | ANGER | DESCRIPTION | SYMBOL |
|------|------|----------|--------------------|--|--------------------|
| | | | | THE TECHNICAL MATERIEL CORP. MAMARONECK, NEW YORK | |
| | | | | CL 333 ASSY. | |
| | | | | COIL, RF, TOROID BAND #4 OSC | |
| | | | G.D.L | <i>[Signature]</i> | <i>[Signature]</i> |
| | | | TYPE & TEMPER | HEAT TREAT. SPEC. | DRAWN |
| | | | | | CHECKED |
| | | | | | FINAL APPROVAL |
| | | | | | A 3497 A |
| | | | FINISH & SPEC. NO. | ELEC. DES. APP. | MECH. DES. APP. |

THE CONTENTS OF THIS DRAWING ARE THE EXCLUSIVE PROPERTY OF THE TECHNICAL MATERIEL CORP. ITS UNAUTHORIZED USE OR REPRODUCTION IN WHOLE OR IN PART IS STRICTLY FORBIDDEN.

| | | | |
|---------------|---------|-----------|---------|
| REQ. PER UNIT | USED ON | | |
| | MODEL | ASSY. NO. | DATE |
| 1 | HFR-1A | A 3500 | 2-25-64 |
| 1 | HFR-2 | A 3500 | |

A 3499 A



PROCEDURE

- 1- WIND 18 TURNS EVENLY SPACED OVER A 240° ANGLE, WIND TURNS IN THE DIRECTION SHOWN.
2. PUSH TURNS TOGETHER OR SPREAD APART AS NEEDED TO MEET INDUCTANCE SHOWN IN TEST SPEC.
3. BAKE FOR 1/2 HOUR AT 215°F TO REMOVE MOISTURE.
4. COAT COIL & CORE W/GL-102 (ITEM 3) AND BAKE FOR 1/2 HR. AT 215°F.

* NOTE: USE TMC COIL STANDARDS FOR TEST REFERENCE.

TEST SPECIFICATIONS

L = 1.44 μ h \pm 0.1 μ h
 Q = 210 MIN @ 11.75 MC
 Cdist = 0.4 μ uf (REF ONLY)

SYMBOL USED

L1037

| | | | |
|---|---|-------------|-------------------------|
| X | 3 | GL 102 | Q-MAX |
| X | 2 | WI 141-24-9 | MAGNET WIRE, SINGLE #24 |
| 1 | 1 | CI 127-1 | CORE, TOROID |

| | | | | | | |
|---|---------------------------------|---------|-------|-----|--------|--|
| A | NOTE ADDED | 1-12-67 | 17575 | RME | G.D.L. | |
| Q | ORIGINAL RELEASE FOR PRODUCTION | 8-13-64 | Q | | | |
| X | EXPERIMENTAL RELEASE | 3-26-64 | | | | |

| REQ. | ITEM | PART NO. | ANGER | DESCRIPTION | SYMBOL |
|------|------|----------|--------|--|----------------|
| | | | | THE TECHNICAL MATERIEL CORP. MAMARONECK, NEW YORK | |
| | | | | CL 334 ASSY (COIL, RF, TOROID, BAND*5, 05C.) | |
| | | | G.D.L. | @ | RAC |
| | | | DRAWN | CHECKED | FINAL APPROVAL |
| | | | | | A 3499 A |

UNLESS OTHERWISE SPECIFIED:
 DIMENSIONS ARE IN INCHES
 TOLERANCES ON
 FRAC. \pm 1/64 DEC. \pm .005 ANGLES \pm 1/2°

SCALE: DO NOT SCALE

MAXIMUM ALLOWABLE TOLERANCES HAVE BEEN DETERMINED AND ANY DEVIATIONS WILL BE CAUSE FOR REJECTION. REMOVE ALL BURRS AND SHARP EDGES