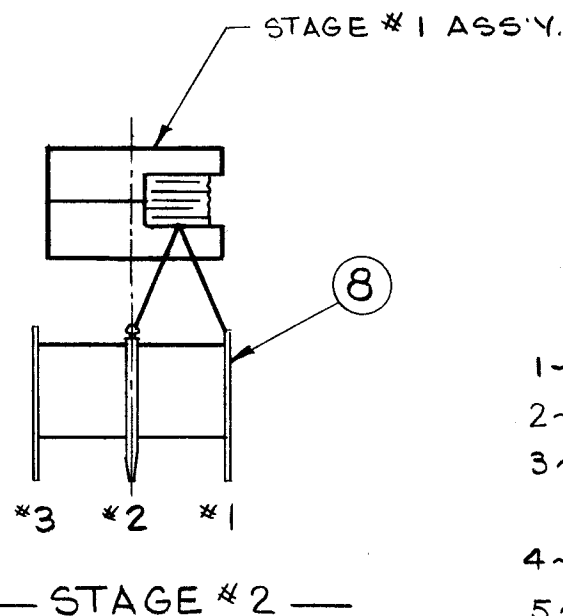
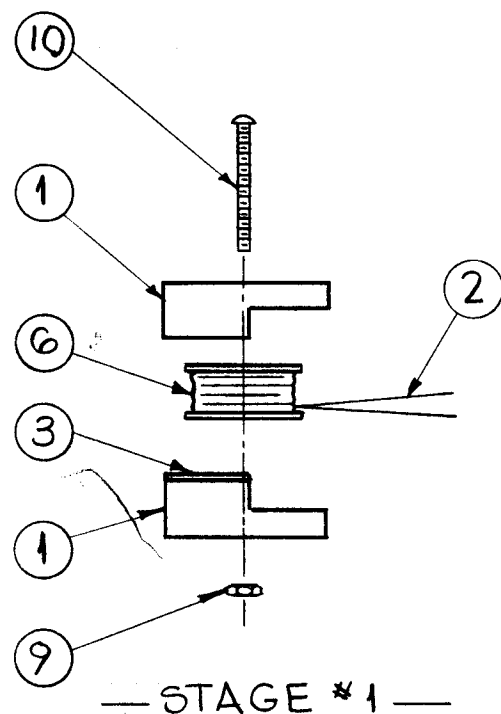


A 3356 0

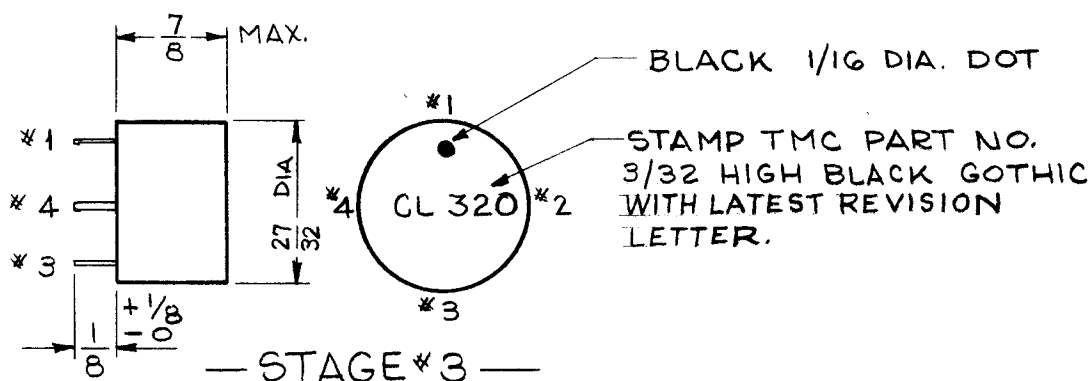
REVISIONS

SYM	DESCRIPTION	DATE	E.M.N. NO.	DRAFT	CHKD	APPD
X1	DWG # WAS AC-176; COMPLETELY REVISED NOTE 5; ADDED ITEM 11.	12/3/63	1	JL	MP	JW
0	ORIGINAL RELEASE FOR PRODUCTION	5-11-64	0	A.M.	@	

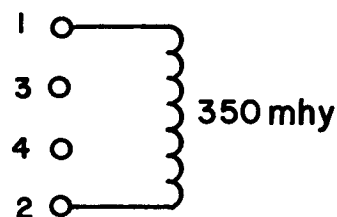


NOTES:

- 1~SOLENOID WIND 660 TURNS, ITEM*2 ON ITEM*6. STAKE ENDS WITH ITEM*4.
- 2~BAKE FOR 20 MINUTES AT 200°F. REMOVE FROM OVEN & COAT WITH ITEM*5.
- 3~ASSEMBLE AS PER STAGE #1, APPLY ITEM*3 ROTATE CORE TO REACH REQUIRED "L" LET SET 2 HOURS.
- 4~ CHECK L, Q & R (+10% - 0)
- 5~ENCAPSULATE STAGE #2 ASS'Y BY INSERTING INTO TMC MOLD #JG-107-1 & POTTING WITH ITEM #7.
- 6~CHECK L, Q & R (±10%).
- 7~STAMP AS PER STAGE #3.



R	L	Q AT 1KC
24 Ω APPROX.	350 mhy	V 10



ABOVE READINGS TAKEN WITH GR #1650-A METER OR EQUIV.

REQ'D.	ITEM	PART NUMBER	DESCRIPTION	SYMBOL
X	11	BS 100	SOLDER, SOFT	
1	10	SCBP0256BNG	SCREW, MACHINE	
1	9	NTH0256BNG	NUT, HEX.	
1	8	TM 124-3	TERMINAL, COLLAR	
X	7	GL 128-2	COMPOUND, POTTING (RED)	
1	6	CF 135-3	FORM, COIL (BOBBIN TYPE)	
X	5	GL 130	CEMENT, Q DOPE	
X	4	GL 103	DUCO	
X	3	GL 125	EPOXY ADHESIVE	
X	2	WI 123-36	WIRE, MAGNET, HEAVY	
2	1	CI 119-T1-J	CORE, CUP	

M. GELLMAN

LIST OF MATERIAL

MATERIAL		THE TECHNICAL MATERIEL CORP. MAMARONECK, NEW YORK	
FINISH		TITLE CL 320 ASSEMBLY	
UNLESS OTHERWISE SPECIFIED DIMENSIONS ARE IN INCHES AND INCLUDE CHEMICALLY APPLIED OR PLATED FINISHES		DRAWN G. Lerner	DATE 5-29-63
DECIMALS .X ± .05 .XX ± .01 .XXX ± .005		CHECKED @	DATE 5-7-64
FRACTIONS ± 1/64 ANGLES ± 0° 30'		ELECT. DES. JW	DATE
TOLERANCES		MECH. DES. JW	DATE
THE CONTENTS OF THIS DRAWING ARE THE EXCLUSIVE PROPERTY OF THE TECHNICAL MATERIEL CORP. ITS UNAUTHORIZED USE OR REPRODUCTION IN WHOLE OR IN PART IS STRICTLY FORBIDDEN.		FINAL APPROVAL RAC	
SCALE		DATE	
CODE A		DATE	
Q'TY./UNIT		SHEET	
MODEL USED ON		REV. LTR.	
ASS'Y. NO.		A-3356	
		0	

NOTES