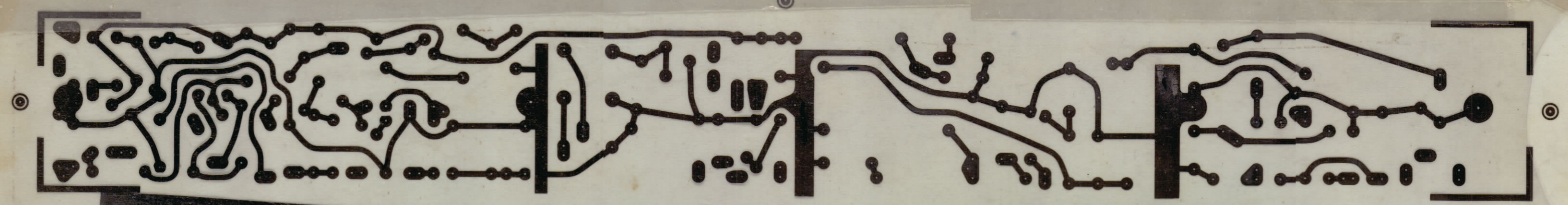


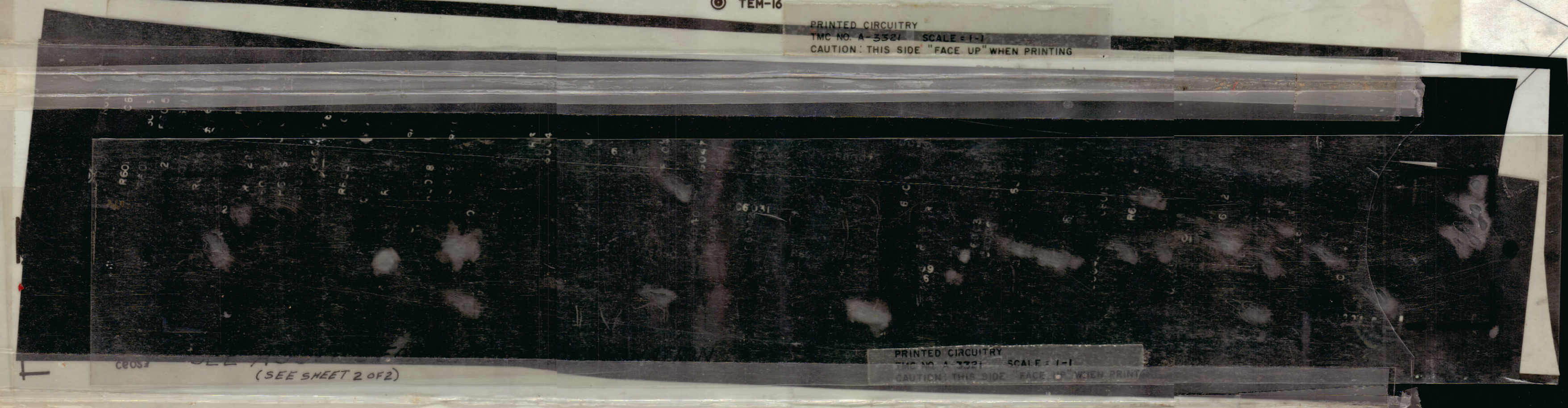
REVISIONS						
ZONE	SYM	DESCRIPTION	DATE	E.M.N. NO.	DRAFT	CHKD APPD
#	0	ORIGINAL RELEASE FOR PRODUCTION	4/14/64	0	A.M.	
#	A	SEE SHEET 2 OF 2, REVISION "A"	8-6-64	11718	W.	W.
#	B	NOTES COMPLETELY REVISED	1/6/65	14497	W.V.	W.V.
#	C	SEE SHEET 2 OF 2	3-4-66	15905	G.D.L.	G.D.L.



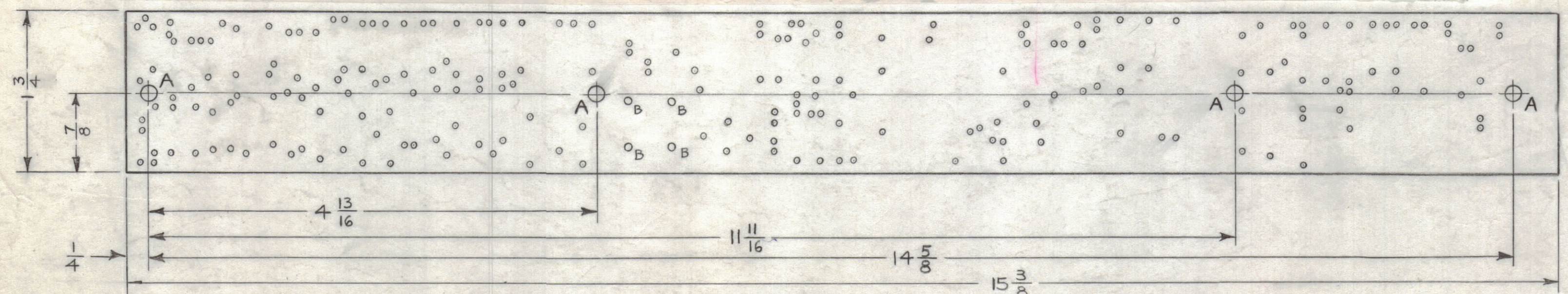
TEM-16

PRINTED CIRCUITRY
TMC NO. A-3321 SCALE 1-1
CAUTION: THIS SIDE "FACE UP" WHEN PRINTING

ORIGINAL ARTWORK TO BE REMOVED FROM PROTECTIVE POCKET WHEN PHOTOGRAPHING (A-3321-1)



PRINTED CIRCUITRY
TMC NO. A-3321 SCALE 1-1
CAUTION: THIS SIDE "FACE UP" WHEN PRINTING



MACHINING (A-3321-2)

HOLE & PAD SPECIFICATIONS			
HOLE	DIA	PAD DIA	REQ'D
UNMARKED	.050	.130	224
A	.189	.312	4
B	.063	.130	4

NOTES: MANUFACTURED IN ACCORDANCE WITH TMC SPEC. S-735, UNLESS OTHERWISE SPECIFIED.

- OVERALL MATERIAL THICKNESS .062 ± .0062 AS PER (PP3.1,3.2).
- CONDUCTIVE PATTERN TO BE COPPER FOIL AS PER (PP4.1).
- PLATING TO BE TIN-LEAD AS PER (PP13.2.2) (13.2.1). IF A PAD APPEARS ON THE PRINTED CIRCUIT SIDE A SIMILAR SIZE & SHAPE SHALL APPEAR ON THE COMPONENT SIDE TO BE MARKED AS PER S-727 (FOR MARKING A3321-3). THIS IS A SINGLE SIDED BOARD.
- (A) ALL HOLES EXCEPT VIA HITS HOLES ARE TO BE PLATED-THRU WITH MINIMUM COPPER PLATING THICKNESS OF .0015.
- (B) PLATE .0003 TO .0003 NICKEL & 25 MILLIONTHS MINIMUM OF GOLD ALL STCHED SURFACES & PLATED-THRU HOLES.
- CONDUCTOR WIDTH: .045 MIN, .062 MAX. SPACE BETWEEN CONDUCTOR .031 MIN.

ORIGINAL ARTWORK TO BE SUPPLIED BY TMC FOR PHOTOGRAPHING (SCALE 1-1)

REQ'D.	ITEM	PART NUMBER	DESCRIPTION	SYMBOL
AALTONEN LIST OF MATERIAL				
MATERIAL		SEE NOTE 1	THE TECHNICAL MATERIEL CORP. MAMARONECK, NEW YORK	
FINISH		SEE NOTE 1	TITLE PRINTED CIRCUIT BOARD ASSY.	
QTY./UNIT		MODEL USED ON	ASS'Y. NO.	
SCALE 1:1		CODE A		
DECIMALS ± .05		TOLERANCES		FRACTIONS ± 1/64
XX ± .01				ANGLES ± 0° 30'
XXX ± .008				
DRAWN	DATE	FINAL APPROVAL	DATE	
W. Peter	1-6-69	Roe	4/20/64	
CHECKED	DATE			
A. Turner	2-18-64			
ELECT. DES.	DATE			
W. Peter	2/19/64			
MECH. DES.	DATE			
A. Turner	2/19/64			
UNLESS OTHERWISE SPECIFIED DIMENSIONS ARE IN INCHES AND INCLUDE CHEMICALLY APPLIED OR PLATED FINISHES			A-3321	
SHEET 1 OF 2			REV. LTR.	

NOTES

THE CONTENTS OF THIS DRAWING ARE THE EXCLUSIVE PROPERTY OF THE TECHNICAL MATERIEL CORP. ITS UNAUTHORIZED USE OR REPRODUCTION IN WHOLE OR IN PART IS STRICTLY FORBIDDEN.

A-3321 C