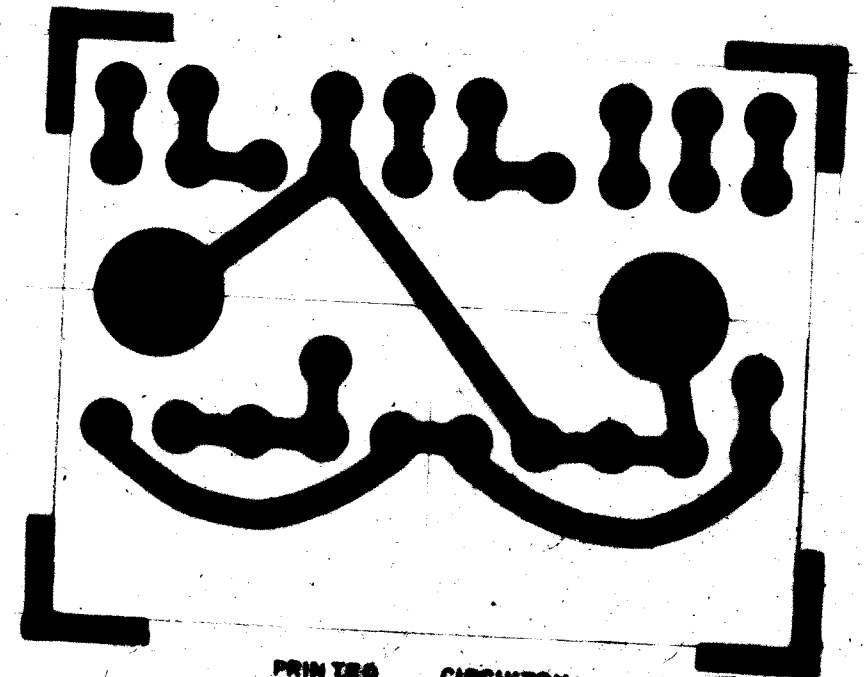


A-3320 B

REVISIONS

SYM	DESCRIPTION	DATE	E.M.N. NO.	DRAFT	CHKD	APPD
A	SEE SHEET 2 OF 2	6/18/64	11609	A.M	<i>[Signature]</i>	<i>[Signature]</i>
B	CLERICAL CHANGE	11.3.64	-	9.2	<i>[Signature]</i>	



← ORIGINAL ARTWORK TO BE REMOVED FROM PROTECTIVE POCKET WHEN PHOTOGRAPHING.

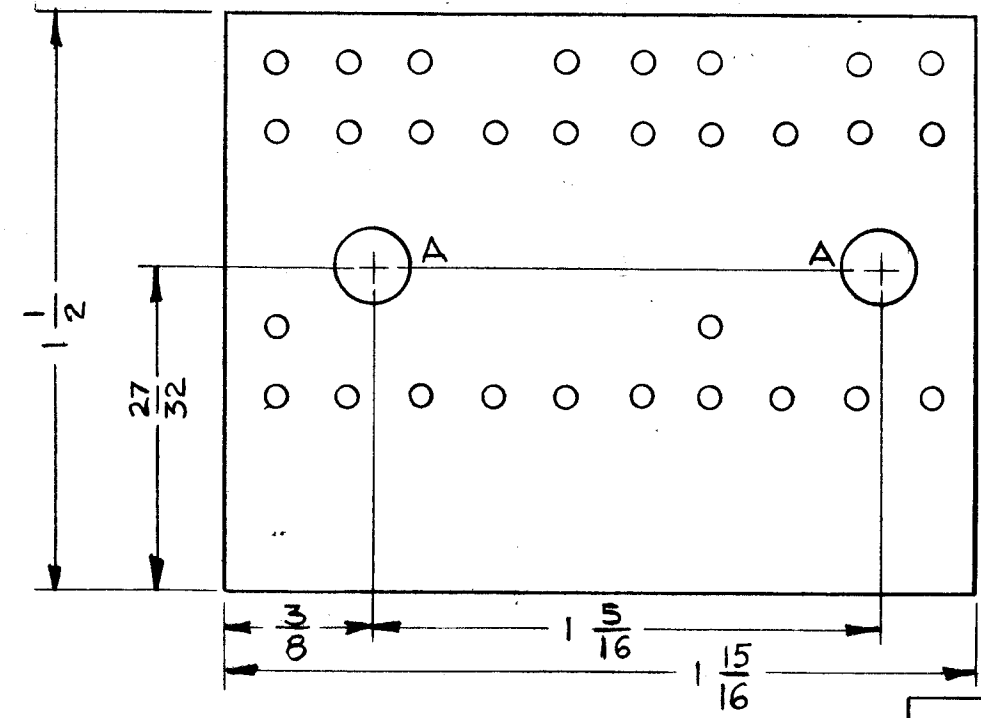
HOLE & PAD SPECIFICATIONS			
HOLE	DIA.	PAD DIA.	REQ'D
UNMARKED	.050	.130	30
A	.189	.250	2

PRINTED CIRCUITRY  
TMC NO. A-3320 SCALE = 2:1  
CAUTION: THIS SIDE FACE UP WHEN PRINTING

-(A3320-1) ETCHING

NOTES:

- MATERIAL: G-10 EPOXY GLASS LAMINATE 1/16 THICK, 2 OUNCE COPPER CLAD BOTH SIDES.
- ALL BOARDS WILL BE DOUBLE-SIDED. WHENEVER A PAD APPEARS ON THE PRINTED CIRCUIT SIDE, A SIMILAR SIZE AND SHAPE SHALL APPEAR ON THE COMPONENT SIDE IN EXACT REGISTER. (EXCEPT WHERE AN EXCEPTION IS NOTED.)
- (A) ALL HOLES EXCEPT "A" MTG. HOLES ARE TO BE PLATED-THRU WITH MINIMUM COPPER PLATING THICKNESS OF .0015.  
(B) PLATE .0003 TO .0005 NICKEL & 25 MILLIONTHS MINIMUM OF GOLD ALL ETCHED SURFACES AND PLATED-THRU HOLES.



-(A-3320-2) MACHINING - DO NOT SCALE, WORK TO DIMENSIONS

ORIGINAL ARTWORK TO BE SUPPLIED BY TMC FOR PHOTOGRAPHING (SCALE 2:1)

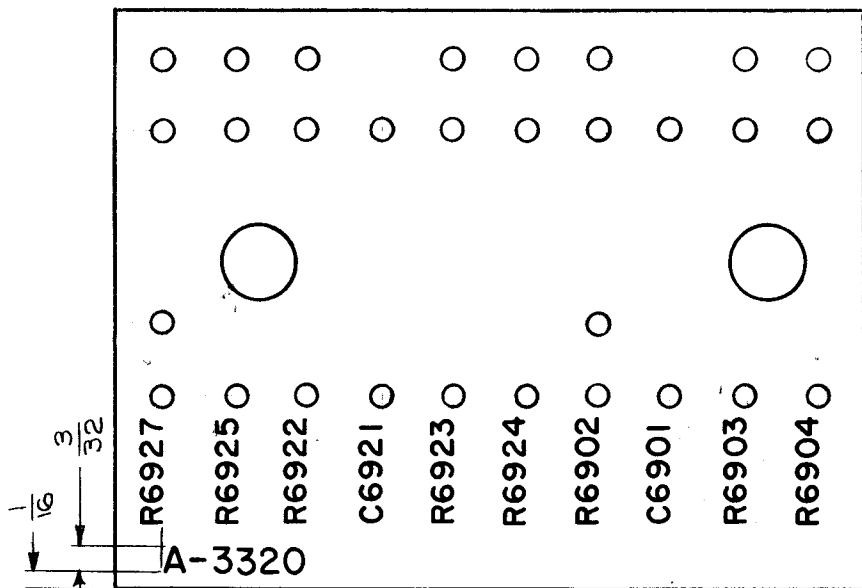
1	MNF-1	
Q'TY./UNIT	MODEL USED ON	ASS'Y. NO.
SCALE 2:1	CODE A	

THE CONTENTS OF THIS DRAWING ARE THE EXCLUSIVE PROPERTY OF THE TECHNICAL MATERIEL CORP. ITS UNAUTHORIZED USE OR REPRODUCTION IN WHOLE OR IN PART IS STRICTLY FORBIDDEN.

REQ'D.	ITEM	PART NUMBER	DESCRIPTION	SYMBOL
AALTONEN LIST OF MATERIAL				
MATERIAL		THE TECHNICAL MATERIEL CORP. MAMARONECK, NEW YORK		
SEE NOTE #1				
FINISH		TITLE		
SEE NOTE #1		PRINTED CIRCUIT BOARD ASSY.		
UNLESS OTHERWISE SPECIFIED DIMENSIONS ARE IN INCHES AND INCLUDE CHEMICALLY APPLIED OR PLATED FINISHES		DRAWN <i>[Signature]</i> DATE 10-16-63		FINAL APPROVAL <i>[Signature]</i> DATE 11/1/64
		CHECKED <i>[Signature]</i> DATE 2-15-64		
		ELECT. DES. <i>[Signature]</i> DATE 2/15/64		A-3320
		MECH. DES. <i>[Signature]</i> DATE 2-15-64		B
		SHEET 1 OF 2		REV. LTR.

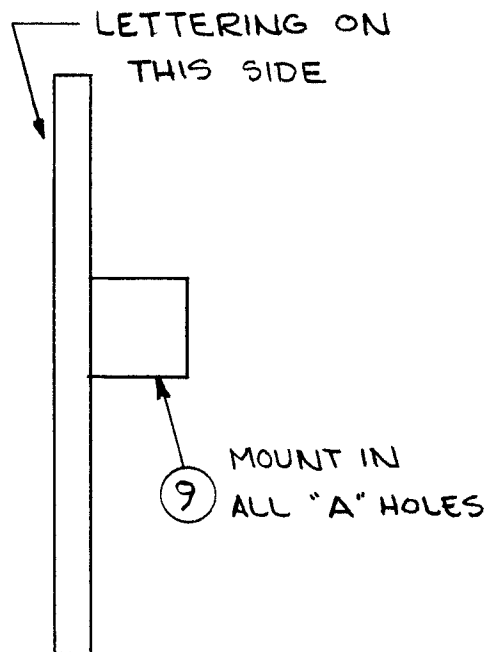
NOTES

MARK TMC PART NO. <sup>3</sup>/<sub>32</sub> HIGH BLACK GOTHIC,  
WITH LATEST REVISION LETTER.

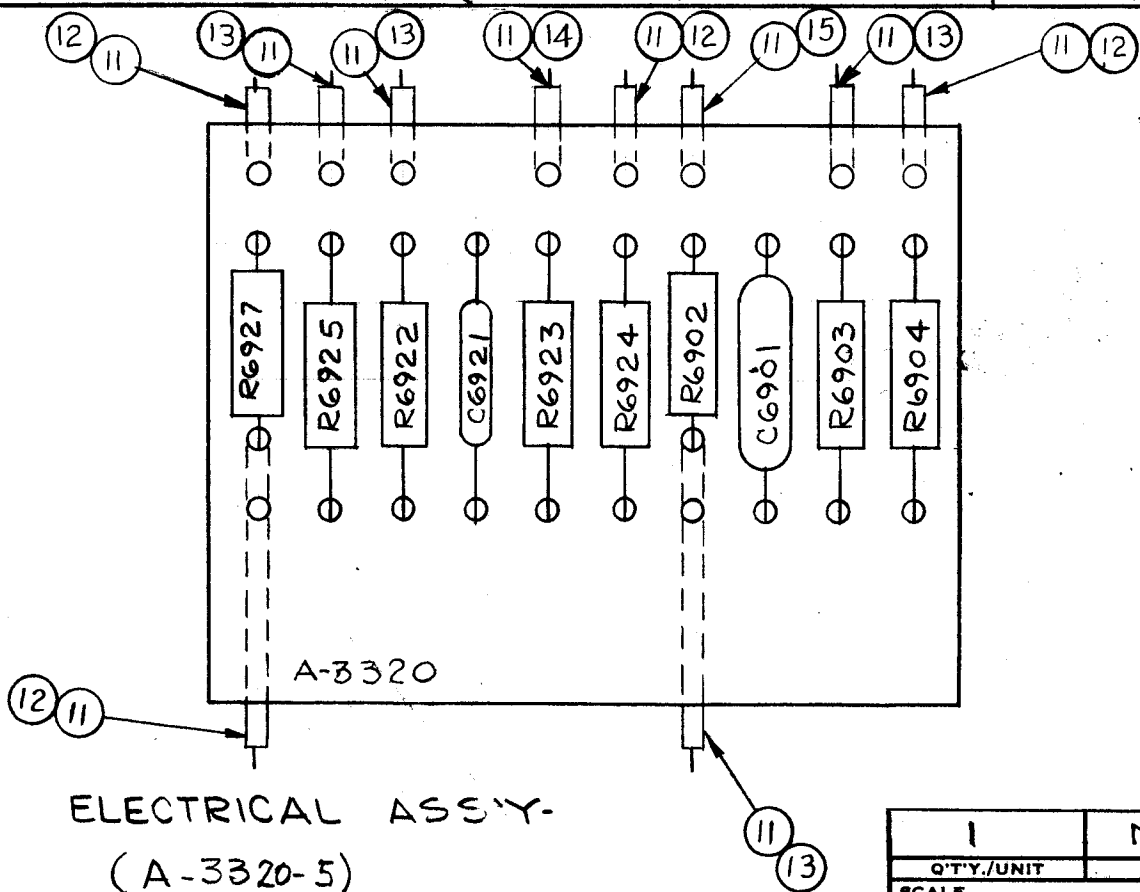


-UNLESS OTHERWISE SPECIFIED-  
1-ALL LETTERING TO BE 5/64 HIGH, BLACK GOTHIC  
STROKE .010.  
2-MARKING PROCESS: AS PER S-727.

LETTERING (A-3320-3)



SUB-ASSY  
(A-3320-4)



ELECTRICAL ASS'Y-  
(A-3320-5)

NOTES

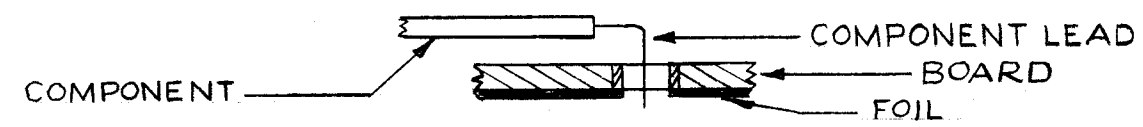
1	MNF-1	
Q'TY./UNIT	MODEL USED ON	ASS'Y. NO.
SCALE 2:1	CODE A	

THE CONTENTS OF THIS DRAWING ARE THE EXCLUSIVE PROPERTY  
OF THE TECHNICAL MATERIEL CORP. ITS UNAUTHORIZED USE OR  
REPRODUCTION IN WHOLE OR IN PART IS STRICTLY FORBIDDEN.

A-3320 B

REVISIONS						
SYM	DESCRIPTION	DATE	E.M.N. NO.	DRAFT	CHKD	APPD
A	ITEMS 1,2,3 & 4 WERE "K" TOL., ITEM 7 WAS CC100-28, ITEM 8 WAS CC100-35, ITEMS 11,12,13,14 & 15 ADDED TO B/M & PICTORIAL.	6/18/64	11609	A.M.	<i>G. J. ...</i>	<i>T. J. ...</i>
B	CLERICAL CHANGE	11-9-64	#	D.F.	@	

- ASSEMBLY NOTICE**
1. TO MOUNT COMPONENTS INSERT LEAD THROUGH PLATED-THRU HOLES & BEND ABOUT 1/16 OF LEAD OVER COPPER FOIL AS SHOWN.
  2. APPLY HEAT & SOLDER TO LEAD & FOIL-CAUTION-TOO MUCH HEAT WILL CAUSE THE FOIL TO SEPARATE FROM THE BOARD.
  3. CLEAN & INSPECT PER SPEC. S-676.



REQ'D.	ITEM	PART NUMBER	DESCRIPTION	SYMBOL
3"	15	PX104-1-034	INSULATION, SLEEVING	BLK
3"	14	PX104-8-034		ORN
14"	13	PX104-2-034		YEL
19"	12	PX104-3-034	INSULATION, SLEEVING,	RED
47"	11	WL100-7	WIRE, ELECTRICAL, BUSS	
X	10	BS-100	SOLDER, SOFT	
2	9	TE-108-2	STANDOFF, RIVET TYPE	
1	8	CC-100-24	CAPACITOR, FIXED CERAMIC	C6921
1	7	CC-100-37	CAPACITOR, FIXED CERAMIC	C6901
1	6	RC20GF680K	RESISTOR, FIXED COMPOSITION	R6902
3	5	RC20GF472K		
1	4	RC20GF392J		R6903
1	3	RC20GF221J		R6922
1	2	RC20GF181J		R6925
1	1	RC20GF153J	RESISTOR, FIXED COMPOSITION	R6923

AALTONEN		LIST OF MATERIAL			
MATERIAL		THE TECHNICAL MATERIEL CORP. MAMARONECK, NEW YORK			
FINISH		TITLE PRINTED CIRCUIT BOARD ASSY			
UNLESS OTHERWISE SPECIFIED DIMENSIONS ARE IN INCHES AND INCLUDE CHEMICALLY APPLIED OR PLATED FINISHES		DRAWN <i>G. J. ...</i>	DATE 10-16-63	FINAL APPROVAL <i>R. J. ...</i>	
		CHECKED <i>A. J. ...</i>	DATE 2-15-64		
		ELECT. DES. <i>T. J. ...</i>	DATE 2/15/64	A-3320	
		MECH. DES. <i>T. J. ...</i>	DATE 2-15-64	B	
		SHEET 2 OF 2		REV. LTR.	

DECIMALS	TOLERANCES	FRACTIONS
.X ± .05		± 1/64
.XX ± .01		ANGLES
.XXX ± .005		± 0° 30'