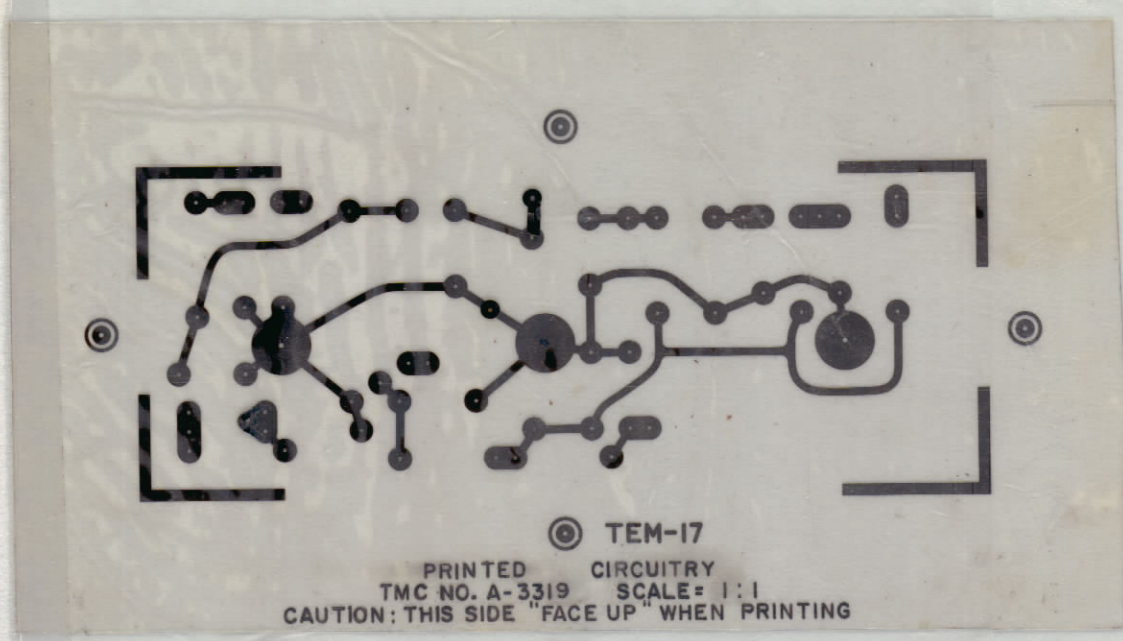
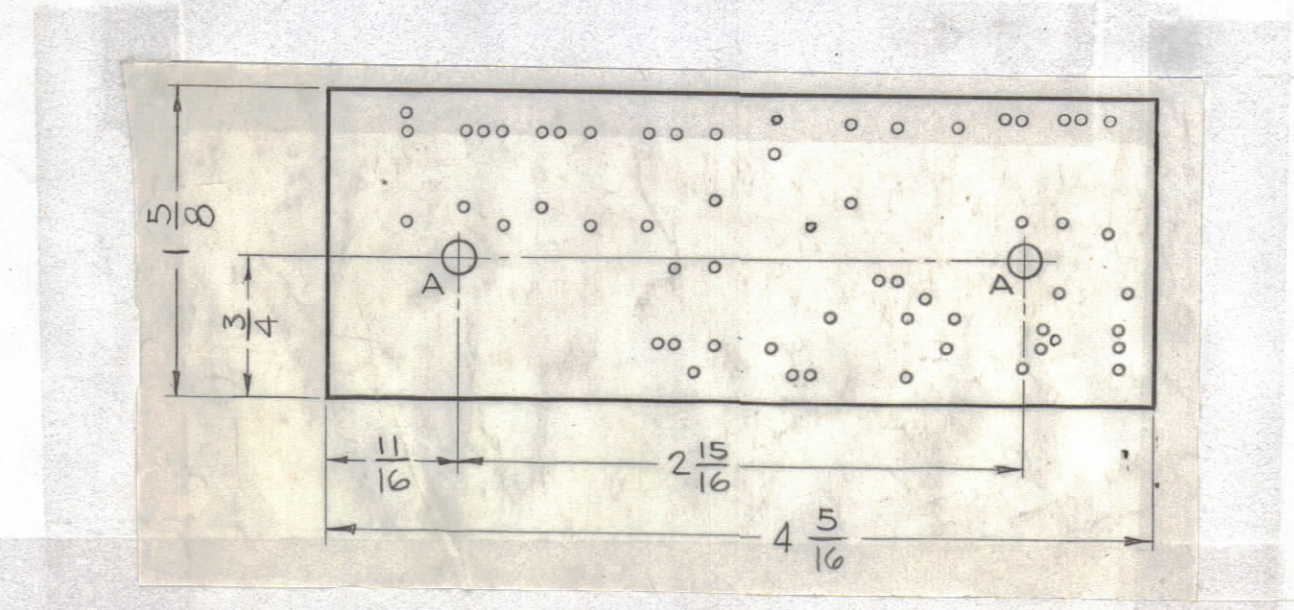


REVISIONS							
ZONE	SYM	DESCRIPTION	DATE	E.M.N. NO.	DRAFT	CHKD	APPD
-#	X1	SHEET 2 OF 2 REDRAWN	3/4/64	X1			
-#	X2	SHEET 2 OF 2 REVISED	3/4/64	X2			
-#	X3	ADDED 3 PADS	4/3/64	X3			
-#	X4	SHEET 1 OF 2 REDRAWN	6/16/64	X4	A.M.		146
-#	Ø	ORIGINAL RELEASE FOR PRODUCTION	6/16/64	Ø	A.M.		
-#	A	CRITICAL CHANGE	11-4-64	-#	92	(a)	



ORIGINAL ARTWORK TO BE REMOVED FROM PROTECTIVE POCKETS WHEN PHOTOGRAPHING.

-(A3319-1) ETCHING



-(A3319-2) MACHINING - DO NOT SCALE, WORK TO DIMENSIONS

HOLE & PAD SPECIFICATIONS			
HOLE	DIA.	PAD DIA	REQ'D
UNMARKED	.050	.130	59
A	.189	.250	2

- NOTES: TO BE MANUFACTURED IN ACCORDANCE WITH TMC SPEC. S-735, UNLESS OTHERWISE SPECIFIED.
- MATERIAL: G-10 EPOXY GLASS LAMINATE 1/16 THICK, 2 OUNCE COPPER CLAD BOTH SIDES.
 - ALL BOARDS WILL BE DOUBLE-SIDED. WHENEVER A PAD APPEARS ON THE PRINTED CIRCUIT SIDE, A SIMILAR SIZE AND SHAPE SHALL APPEAR ON THE COMPONENT SIDE IN EXACT REGISTER. (EXCEPT WHERE AN EXCEPTION IS NOTED.)
 - (A) ALL HOLES EXCEPT "A" MTG. HOLES ARE TO BE PLATED-THRU WITH MINIMUM COPPER PLATING THICKNESS OF .0015.
(B) PLATE .0003 TO .0005 NICKEL & 25 MILLIONTHS MINIMUM OF GOLD ALL ETCHED SURFACES AND PLATED-THRU HOLES.

ORIGINAL ARTWORK TO BE SUPPLIED BY TMC FOR PHOTOGRAPHING (SCALE 1:1)

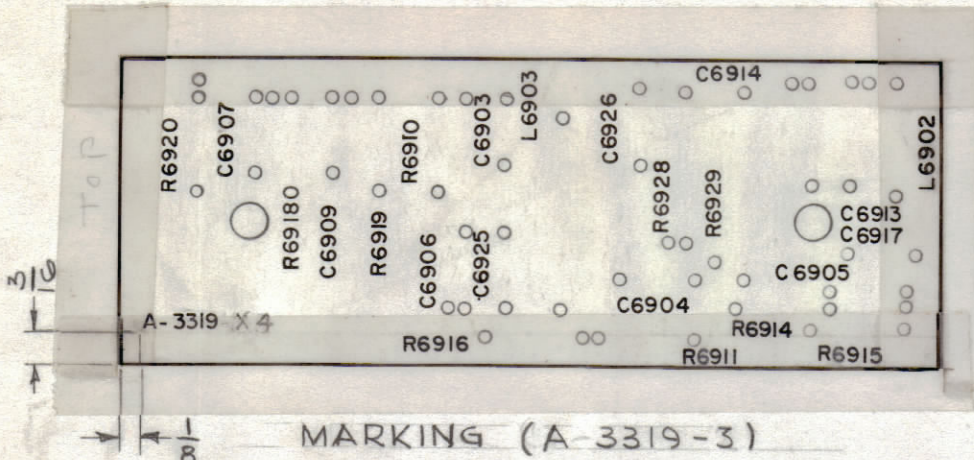
1	MNF-1	
Q'TY./UNIT	MODEL USED ON	ASS'Y. NO.
SCALE 1:1	CODE A	

THE CONTENTS OF THIS DRAWING ARE THE EXCLUSIVE PROPERTY OF THE TECHNICAL MATERIEL CORP. ITS UNAUTHORIZED USE OR REPRODUCTION IN WHOLE OR IN PART IS STRICTLY FORBIDDEN.

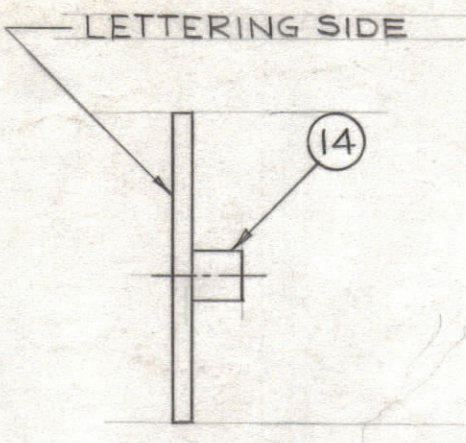
REQ'D.	ITEM	PART NUMBER	DESCRIPTION	SYMBOL
A. ALTONEN LIST OF MATERIAL				
MATERIAL		THE TECHNICAL MATERIEL CORP. MAMARONECK, NEW YORK		
SEE NOTE #1		TITLE		
FINISH		PRINTED CIRCUIT BOARD ASSY.		
SEE NOTE #1		DRAWN A. MARINO DATE 6/16/64		
UNLESS OTHERWISE SPECIFIED DIMENSIONS ARE IN INCHES AND INCLUDE CHEMICALLY APPLIED OR PLATED FINISHES		CHECKED @ DATE 6/14/64		
DECIMALS .X ± .05 .XX ± .01 .XXX ± .005		FRACTIONS ± 1/64 ANGLES ± 0° 30'		FINAL APPROVAL DATE 6/16/64
TOLERANCES		ELECT. DES. DATE 6/16/64		MECH. DES. DATE 6-16-64
		A3319		SHEET 1 of 2
		REV. LTR. A		

NOTES

A3319 A



UNLESS OTHERWISE SPECIFIED:
 1. MARKING PROCESS AS PER TMC SPEC. S-727
 2. ALL LETTERING TO BE 3/4 HIGH BLACK GOTHIC, STROKE .010



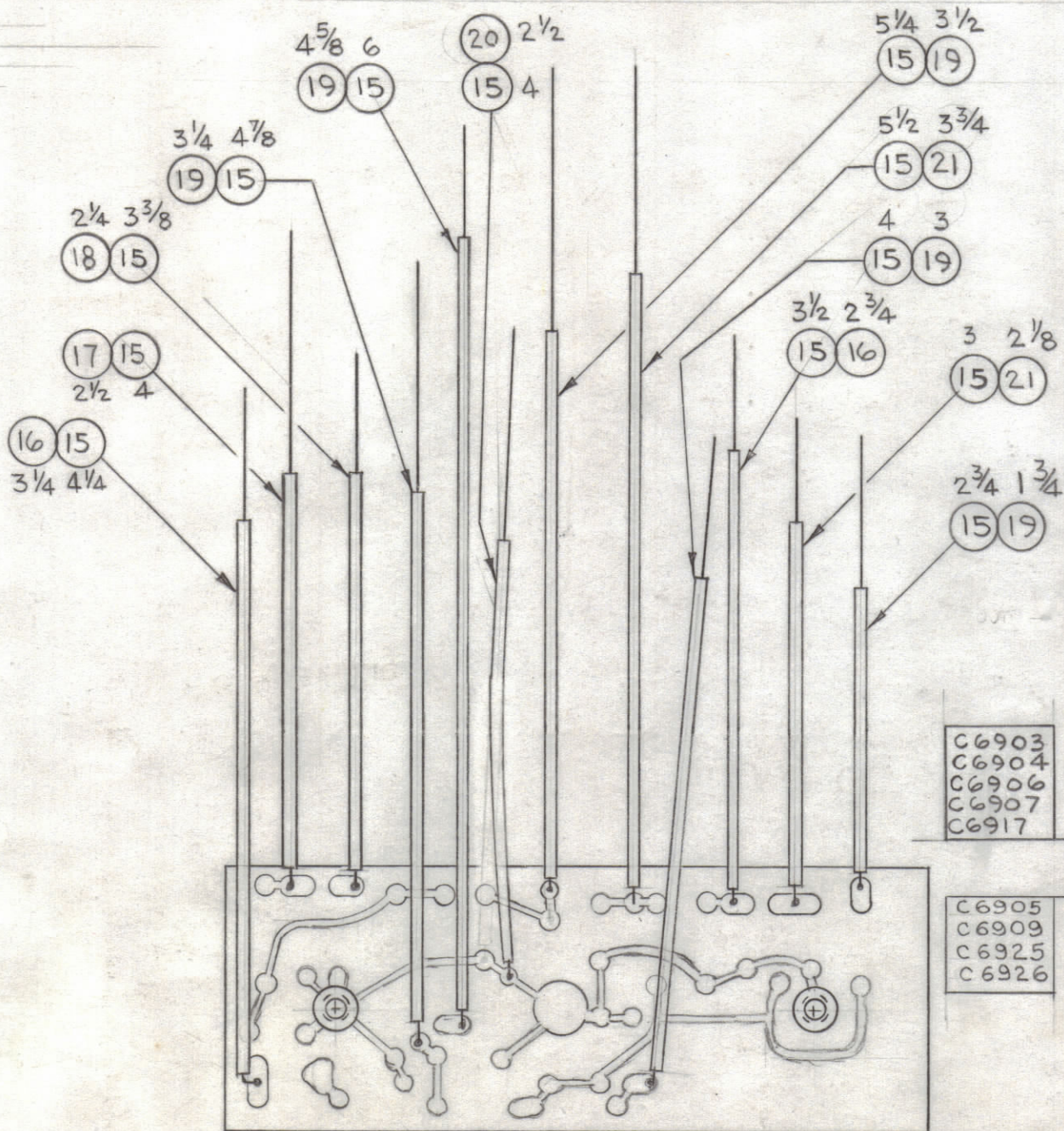
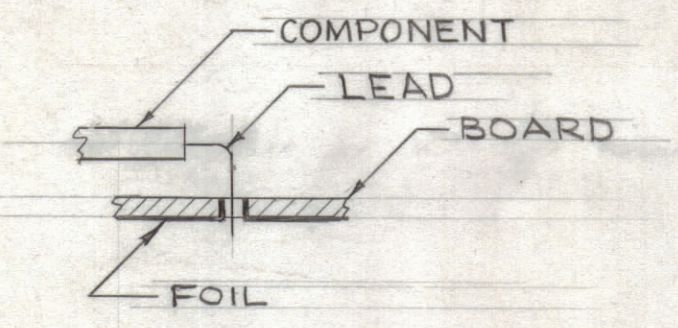
SUB-ASSY (A-3319-4)

NOTE:
 MOUNT ITEM 14 IN ALL "A" HOLES.

REVISIONS						
ZONE	SYM	DESCRIPTION	DATE	E.M.N. NO.	DRAFT	CHKD
	X1	REDRAWN	2/21/64		AM	
	X2	ITEM 8 WAS CC-100-32 ITEM 6 WAS RC 20GF562K ITEM 1 WAS RC 20GF153K	3/4/64		TR	
	X3	RE-REDRAWN	3/6/64		TR	
	X4	SHEET 1 OF 2 REDRAWN	6/16/64	X4	A.M.	
	Ø	ORIGINAL RELEASE FOR PRODUCTION	6/16/64	Ø	A.M.	
	A	CLERICAL CHANGE	11-9-69		IF	

ASSEMBLY NOTICE

- TO MOUNT COMPONENTS, INSERT LEAD THROUGH PLATED-THRU HOLES & BEND ABOUT 1/16 OF LEAD OVER COPPER FOIL AS SHOWN.
- APPLY HEAT & SOLDER TO LEAD & FOIL. CAUTION - TOO MUCH HEAT WILL CAUSE FOIL TO SEPARATE FROM THE BOARD.
- CLEAN & INSPECT AS PER SPEC. S-676.
- FUNGUS PROOFING PER TMC SPEC. S-113.



ELECTRICAL ASSY (A-3319-5)

REQ'D.	ITEM	PART NUMBER	DESCRIPTION	SYMBOL
X	22	BS 100	SOLDER, SOFT	
6	21	PX 104-8-034	INSULATION, SLEEVING, ELECTRICAL	
3	20	PX 104-1-034	INSULATION, SLEEVING, ELECTRICAL	
16	19	PX 104-3-034	INSULATION, SLEEVING, ELECTRICAL	
3	18	PX 104-5-034	INSULATION, SLEEVING, ELECTRICAL	
3	17	PX 104-6-034	INSULATION, SLEEVING, ELECTRICAL	
6	16	PX 104-2-034	INSULATION, SLEEVING, ELECTRICAL	
43	15	WL 100-7	WIRE, BUSS BAR	
2	14	TE 108-2	STANDOFF, RIVET TYPE	
	13	//	//	//
2	12	CM 108G10001K	CAPACITOR, FIXED MICA	C6913 C6914
1	11	CL 275-473	COIL, R.F. FIXED	L6902
1	10	CL 226-5	COIL, R.F. FIXED	L6903
5	9	CC 100-35	CAPACITOR, FIXED CERAMIC DISC	
4	8	CC 100-37	CAPACITOR, FIXED, CERAMIC DISC.	
1	7	RC 20GF680K	RESISTOR, FIXED, COMPOSITION	R6914
1	6	RC 42GF562K	RESISTOR, FIXED, COMPOSITION	R6928
1	5	RC 20GF561K	RESISTOR, FIXED, COMPOSITION	R6919
2	4	RC 20GF472 K	RESISTOR, FIXED, COMPOSITION	R6911 R6916
2	3	RC 20GF392K	RESISTOR, FIXED, COMPOSITION	R6915 R6920
2	2	RC 20GF223K	RESISTOR, FIXED, COMPOSITION	R6910 R6918
1	1	RC 42GF153K	RESISTOR, FIXED, COMPOSITION	R6929

AALTONEN		LIST OF MATERIAL	
MATERIAL	//	THE TECHNICAL MATERIEL CORP. MAMARONECK, NEW YORK	
FINISH	//	TITLE PRINTED CIRCUIT BOARD ASSY	

Q'TY./UNIT	MODEL USED ON	ASS'Y. NO.
SCALE	CODE	
1:1	A	

UNLESS OTHERWISE SPECIFIED DIMENSIONS ARE IN INCHES AND INCLUDE CHEMICALLY APPLIED OR PLATED FINISHES		DRAWN	DATE	FINAL APPROVAL	DATE
TOLERANCES		T. RAMIREZ	3/4/64		
DECIMALS .X ± .05 .XX ± .01 .XXX ± .005		CHECKED	6-16-64		
FRACTIONS ± 1/64 ANGLES ± 0° 30'		ELECT. DES.	DATE	A 3319	A
		MECH. DES.	DATE	SHEET 2 OF 2	REV. LTR.

NOTES

THE CONTENTS OF THIS DRAWING ARE THE EXCLUSIVE PROPERTY OF THE TECHNICAL MATERIEL CORP. ITS UNAUTHORIZED USE OR REPRODUCTION IN WHOLE OR IN PART IS STRICTLY FORBIDDEN.