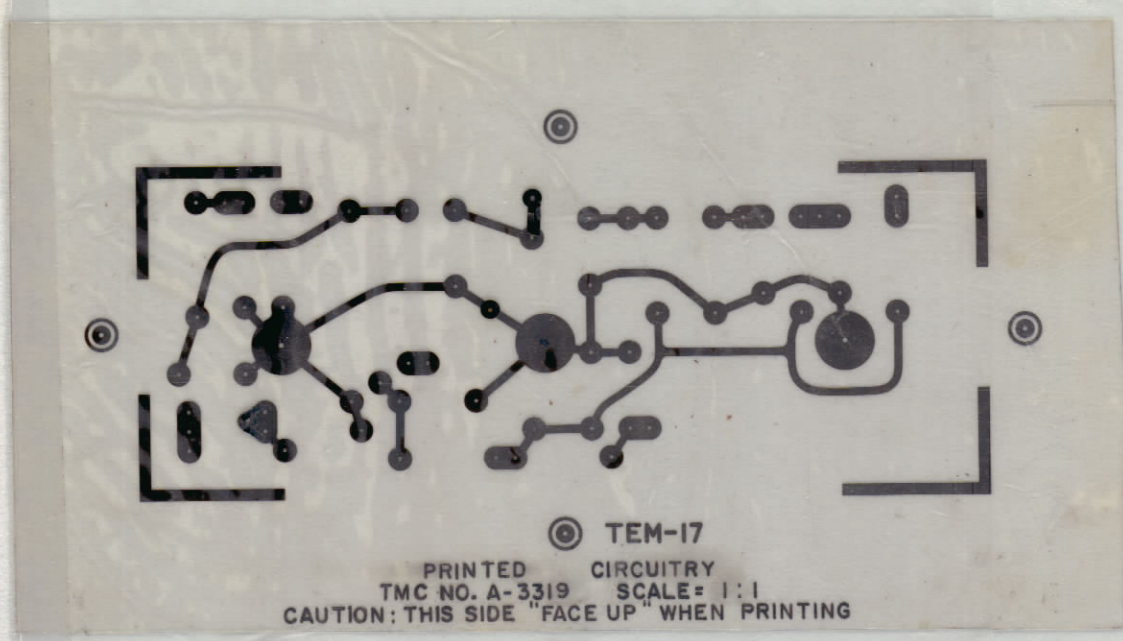
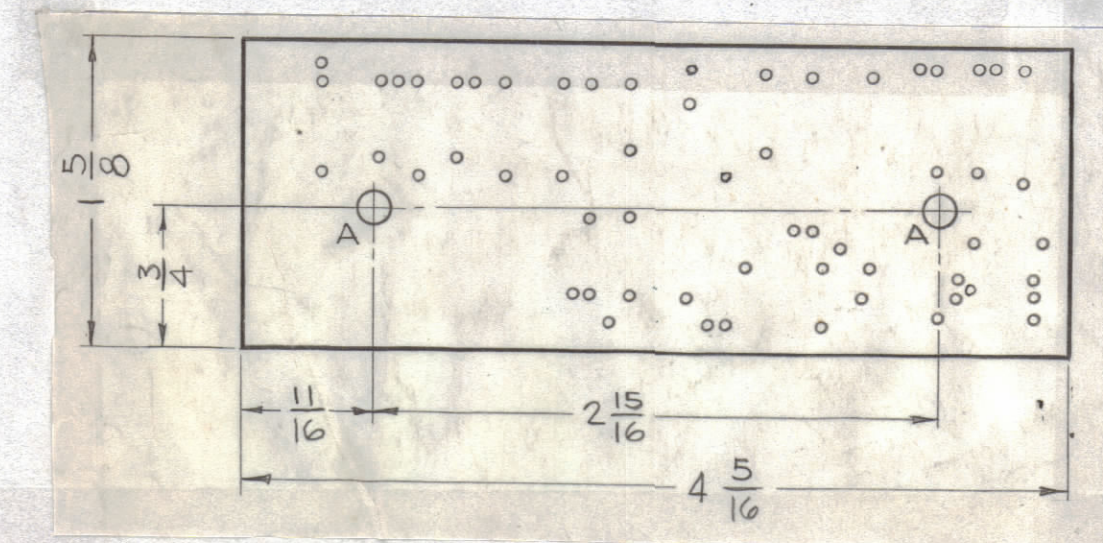


| REVISIONS | | | | | | |
|-----------|-----|---------------------------------|---------|------------|-------|-----------|
| ZONE | SYM | DESCRIPTION | DATE | E.M.N. NO. | DRAFT | CHKD APPD |
| -# | X1 | SHEET 2 OF 2 REDRAWN | 3/4/64 | X1 | | |
| -# | X2 | SHEET 2 OF 2 REVISED | 3/4/64 | X2 | | |
| -# | X3 | ADDED 3 PADS | 4/3/64 | X3 | | |
| -# | X4 | SHEET 1 OF 2 REDRAWN | 6/16/64 | X4 | A.M. | 146 |
| -# | Ø | ORIGINAL RELEASE FOR PRODUCTION | 6/16/64 | Ø | A.M. | |
| -# | A | CRITICAL CHANGE | 11-4-64 | -# | 92 | @ |



ORIGINAL ARTWORK TO BE REMOVED FROM PROTECTIVE POCKETS WHEN PHOTOGRAPHING.

-(A3319-1) ETCHING



-(A3319-2) MACHINING - DO NOT SCALE, WORK TO DIMENSIONS

| HOLE & PAD SPECIFICATIONS | | | |
|---------------------------|------|---------|-------|
| HOLE | DIA. | PAD DIA | REQ'D |
| UNMARKED | .050 | .130 | 59 |
| A | .189 | .250 | 2 |

- NOTES: TO BE MANUFACTURED IN ACCORDANCE WITH TMC SPEC. S-735, UNLESS OTHERWISE SPECIFIED.
- MATERIAL: G-10 EPOXY GLASS LAMINATE 1/16 THICK, 2 OUNCE COPPER CLAD BOTH SIDES.
 - ALL BOARDS WILL BE DOUBLE-SIDED. WHENEVER A PAD APPEARS ON THE PRINTED CIRCUIT SIDE, A SIMILAR SIZE AND SHAPE SHALL APPEAR ON THE COMPONENT SIDE IN EXACT REGISTER. (EXCEPT WHERE AN EXCEPTION IS NOTED.)
 - (A) ALL HOLES EXCEPT "A" MTG. HOLES ARE TO BE PLATED-THRU WITH MINIMUM COPPER PLATING THICKNESS OF .0015.
(B) PLATE .0003 TO .0005 NICKEL & 25 MILLIONTHS MINIMUM OF GOLD ALL ETCHED SURFACES AND PLATED-THRU HOLES.

ORIGINAL ARTWORK TO BE SUPPLIED BY TMC FOR PHOTOGRAPHING (SCALE 1:1)

| | | |
|------------|---------------|------------|
| 1 | MNF-1 | |
| Q'TY./UNIT | MODEL USED ON | ASS'Y. NO. |
| SCALE 1:1 | CODE A | |

THE CONTENTS OF THIS DRAWING ARE THE EXCLUSIVE PROPERTY OF THE TECHNICAL MATERIEL CORP. ITS UNAUTHORIZED USE OR REPRODUCTION IN WHOLE OR IN PART IS STRICTLY FORBIDDEN.

| REQ'D. | ITEM | PART NUMBER | DESCRIPTION | SYMBOL |
|---|------|---|-------------|-----------------------------|
| A. ALTONEN LIST OF MATERIAL | | | | |
| MATERIAL | | THE TECHNICAL MATERIEL CORP. MAMARONECK, NEW YORK | | |
| SEE NOTE #1 | | TITLE | | |
| FINISH | | PRINTED CIRCUIT BOARD ASSY. | | |
| SEE NOTE #1 | | DRAWN A. MARINO DATE 6/16/64 | | |
| UNLESS OTHERWISE SPECIFIED DIMENSIONS ARE IN INCHES AND INCLUDE CHEMICALLY APPLIED OR PLATED FINISHES | | CHECKED @ DATE 6/14/64 | | |
| DECIMALS .X ± .05 .XX ± .01 .XXX ± .005 | | FRACTIONS ± 1/64 ANGLES ± 0° 30' | | FINAL APPROVAL DATE 6/16/64 |
| TOLERANCES | | ELECT. DES. DATE 6/16/64 | | MECH. DES. DATE 6-16-64 |
| | | A3319 | | A |
| | | SHEET 1 of 2 | | REV. LTR. |

NOTES

A3319 A