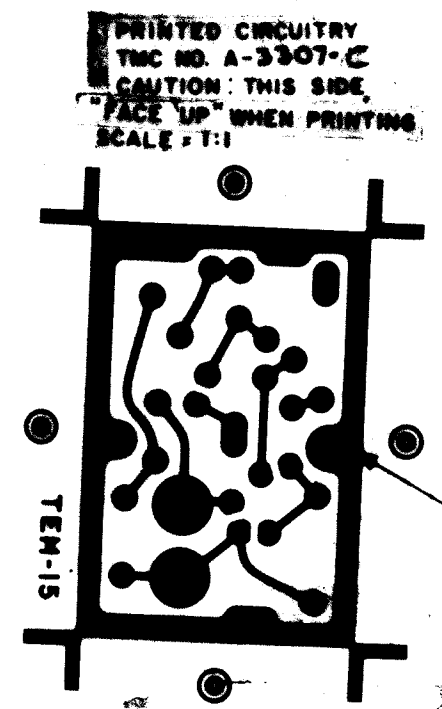
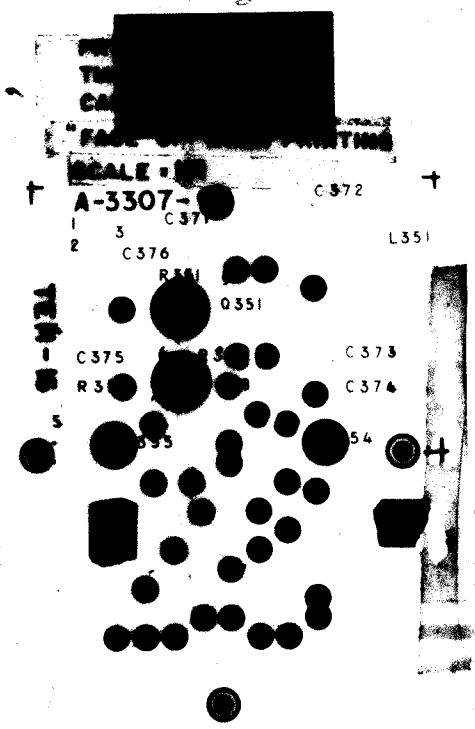


ETCHING, PRINTED CIRCUIT (A-3307-1)

A-3307 C

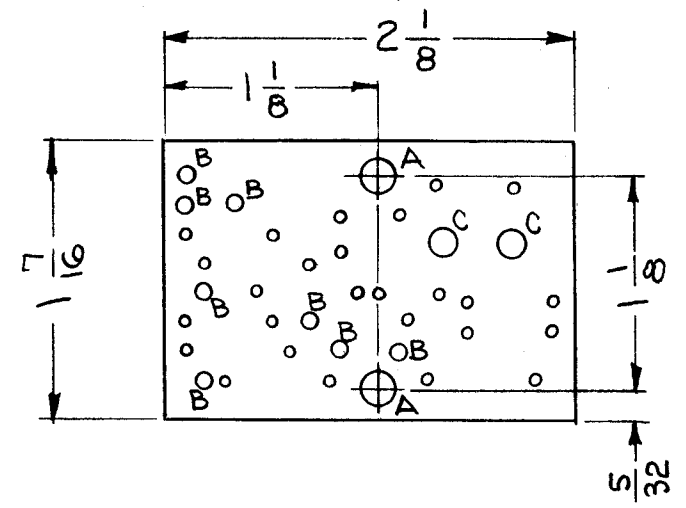
REVISIONS					
SYM	DESCRIPTION	DATE	E.M.N. NO.	DRAFT	CHKD
X1	SEE SHEET 2, REVISION "X1"	2/24/64	1	gl	ML
X2	SEE SHEET 2, REVISION "X2"	3/16/64	2	gl	ML
X3	NOTES: PER S-735 ADDED; 3(B) UPDATED HOLES: "C" DIA'S ADDED; "B" PAD DIA ADDED	7-7-64	3	gl	ML
Ø	ORIGINAL RELEASE FOR PRODUCTION	7-7-64	4	gl	ML
A	SEE SHEET 2 OF 2 REV. "A"	8.27.64	12251	hbs	ML
B	SEE SHEET 2 OF 2 REV. "B"	10.29.64	12786	hbs	ML
C	SEE SHEET 2 OF 2 REV. "C"	12-7-64	13068	PR	ML



ORIGINAL ARTWORK TO BE REMOVED FROM PROTECTIVE POCKETS WHEN PHOTOGRAPHING.
(NOTE DOUBLE POCKETS)

NOTES: TO BE MANUFACTURED IN ACCORDANCE WITH TMC SPECIFICATION S-735, UNLESS OTHERWISE SPECIFIED.

- MATERIAL - G-10 EPOXY GLASS LAMINATE 3/32 THICK, 2 OUNCE COPPER CLAD BOTH SIDES.
- ALL BOARDS WILL BE DOUBLE-SIDED. WHENEVER A PAD APPEARS ON THE PRINTED CIRCUIT SIDE, A SIMILAR SIZE AND SHAPE SHALL APPEAR ON THE COMPONENT SIDE IN EXACT REGISTER. (EXCEPT WHERE AN EXCEPTION IS NOTED.)
- (A) ALL HOLES EXCEPT "A" MTG. HOLES ARE TO BE PLATED-THRU WITH A MINIMUM COPPER PLATING THICKNESS OF .001.
(B) PLATE .0005 TO .001 NICKEL AND .00008 MINIMUM OF GOLD ALL ETCHED SURFACES & PLATED-THRU HOLES.



HOLE & PAD SPECIFICATION			
HOLE	DIA.	PAD DIA.	REQ'D
UNMARKED	.050	.130	26
A	.166	.250	2
B	.078	.130	8
C	.166	.310	2

THE ORIGINAL ARTWORK TO BE SUPPLIED BY TMC FOR PHOTOGRAPHING. (SCALE 1:1)

REF: CK700

A-3307-2 MACHINING
DO NOT SCALE, WORK TO DIMENSIONS

NOTES

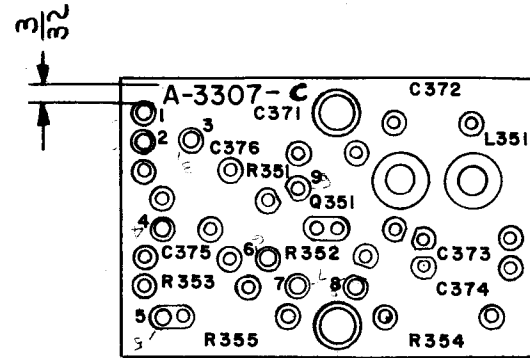
5	LFS-1	AX-495
Q'TY./UNIT	MODEL USED ON	ASS'Y. NO.
SCALE 1:1	CODE A	

THE CONTENTS OF THIS DRAWING ARE THE EXCLUSIVE PROPERTY OF THE TECHNICAL MATERIEL CORP. ITS UNAUTHORIZED USE OR REPRODUCTION IN WHOLE OR IN PART IS STRICTLY FORBIDDEN.

REQ'D.	ITEM	PART NUMBER	DESCRIPTION	SYMBOL
M. GELLMAN LIST OF MATERIAL				
MATERIAL		THE TECHNICAL MATERIEL CORP. MAMARONECK, NEW YORK		
FINISH		TITLE PRINTED CIRCUIT BOARD, ASS'Y (SPECTRUM FILTER)		
UNLESS OTHERWISE SPECIFIED DIMENSIONS ARE IN INCHES AND INCLUDE CHEMICALLY APPLIED OR PLATED FINISHES		DRAWN J. LESHINSKI	DATE 9/20/63	FINAL APPROVAL ML
		CHECKED @	DATE 7-7-64	
		ELECT. DES. MD	DATE 7-7-64	A-3307 C
		MECH. DES.	DATE	SHEET 1 OF 2
		DECIMALS .X ± .05 .XX ± .01 .XXX ± .005	FRACTIONS ± 1/64 ANGLES ± 0° 30'	REV. LTR.

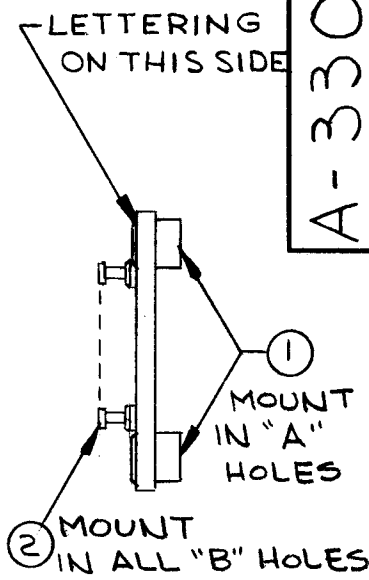
— UNLESS OTHERWISE SPECIFIED —

- 1-ALL MARKING TO BE 1/16 HIGH BLACK GOTHIC.
- 2-MARKING PROCESS: AS PER TMC SPEC.727 LOCATED AS SHOWN.

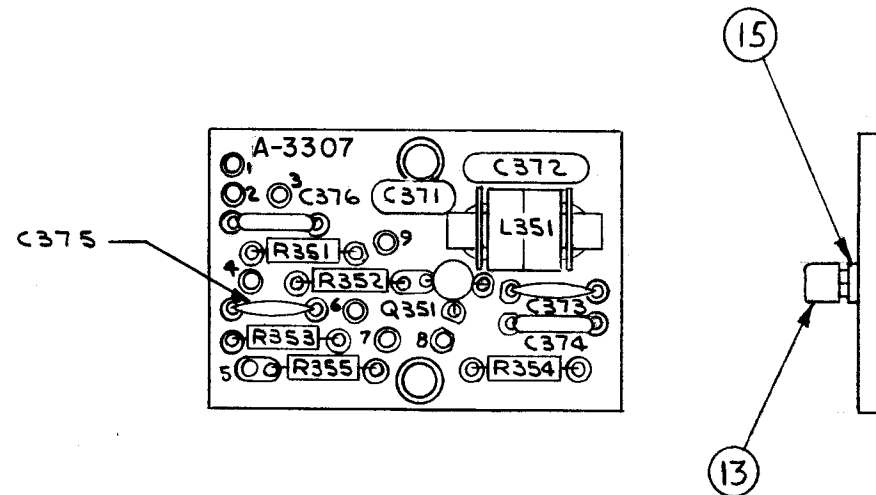


NOTE:
CHANGE 2-1 ARTWORK ALSO

MARKING (A-3307-3)



SUB-ASS'Y (A-33074)



ELECTRICAL ASS'Y (A-3307-5)

REF: CK700

NOTES

1	LFS-A-1	AX-495
O'TY./UNIT	MODEL USED ON	ASS'Y. NO.
SCALE 1:1	CODE A	
THE CONTENTS OF THIS DRAWING ARE THE EXCLUSIVE PROPERTY OF THE TECHNICAL MATERIEL CORP. ITS UNAUTHORIZED USE OR REPRODUCTION IN WHOLE OR IN PART IS STRICTLY FORBIDDEN.		

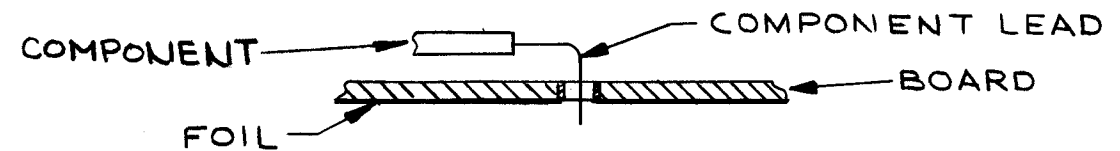
A-3307 C

REVISIONS

SYM	DESCRIPTION	DATE	E.M.N. NO.	DRAFT	CHKD	APPD
X1	ITEM (3) WAS RC 20GF 223J	2/24/64	1	SP	RLZ	
X2	TERMINALS #1 THRU 9 ADDED TO A-3307-3	3/16/64	2	SP		
X3	ITEM 12 & FUNGUS NOTE ADDED	7-7-64	3	SP		
0	ORIGINAL RELEASE FOR PRODUCTION	7-7-64	4	SP		
A	IT.1 WAS TE 164-7	8-27-64	12251	KB		
B	IT.9 WAS CC112R 474	10-29-64	12786	KB		
C	ON B/M: IT.(10) WAS 'CM112D102J5'; IT.(11) WAS 'CM111E471F55'; IT.(13) WAS 'ZNI637'; IT.(15) ADD; ON(A-3307-5) IT.(15) DETAIL ADD.	12-7-64	13068	RF		

— ASSEMBLY NOTICE —

- 1-TO MOUNT COMPONENTS INSERT LEAD THROUGH PLATED-THRU HOLES AND BEND ABOUT 1/16 OF LEAD OVER COPPER FOIL AS SHOWN.
- 2-APPLY HEAT AND SOLDER TO LEAD AND FOIL- CAUTION- TOO MUCH HEAT WILL CAUSE THE FOIL TO SEPARATE FROM BOARD.
- 3-CLEAN AND INSPECT AS PER S-676.
- 4-FUNGUS PROOF PER TMC SPEC S-113.



REQ'D.	ITEM	PART NUMBER	DESCRIPTION	SYMBOL
1	15	PX829-2	PAD, TRANSISTOR MTG.	
-	14	BS 100	SOLDER, SOFT	
1	13	TX105	TRANSISTOR	Q351
1	12	CL327	COIL, R.F.	L351
1	11	CM111E471F55	CAPACITOR, FIXED, MICA	C371
1	10	CM112D102J5S	CAPACITOR, FIXED, MICA	C372
2	9	CC112R 474M	CAPACITOR, FIXED, CERAMIC	C374 C375
2	8	CC 100-35	CAPACITOR, FIXED, CERAMIC DISC	C373 C376
1	7	RC 20GF103J	RESISTOR, FIXED, COMPOSITION	R351
1	6	RC 20GF561K		R352
1	5	RC 20GF470K		R353
1	4	RC 20GF102K		R354
1	3	RC 20GF123J		R355
9	2	TE 127-4	TERMINAL STUD	B
2	1	TE 164-8	STANDOFF, RIVET TYPE	A

REQ'D.	ITEM	PART NUMBER	DESCRIPTION	SYMBOL
--------	------	-------------	-------------	--------

M. GELLMAN LIST OF MATERIAL

MATERIAL: _____
FINISH: _____

THE TECHNICAL MATERIEL CORP.
MAMARONECK, NEW YORK

TITLE: PRINTED CIRCUIT BOARD, ASS'Y (SPECTRUM FILTER)

UNLESS OTHERWISE SPECIFIED DIMENSIONS ARE IN INCHES AND INCLUDE CHEMICALLY APPLIED OR PLATED FINISHES

DRAWN: J. LESHINSKI
CHECKED: @
ELECT. DES: [Signature]
MECH. DES: [Signature]

DATE: 8/27/63
DATE: 7-7-64
DATE: 7-7-64

FINAL APPROVAL: [Signature]
DATE: [Blank]

DECIMALS: .X ± .05, .XX ± .01, .XXX ± .005
FRACTIONS: ± 1/64, ANGLES: ± 0° 30'

TOLERANCES

A-3307 C

SHEET 2 OF 2

REV. LTR.