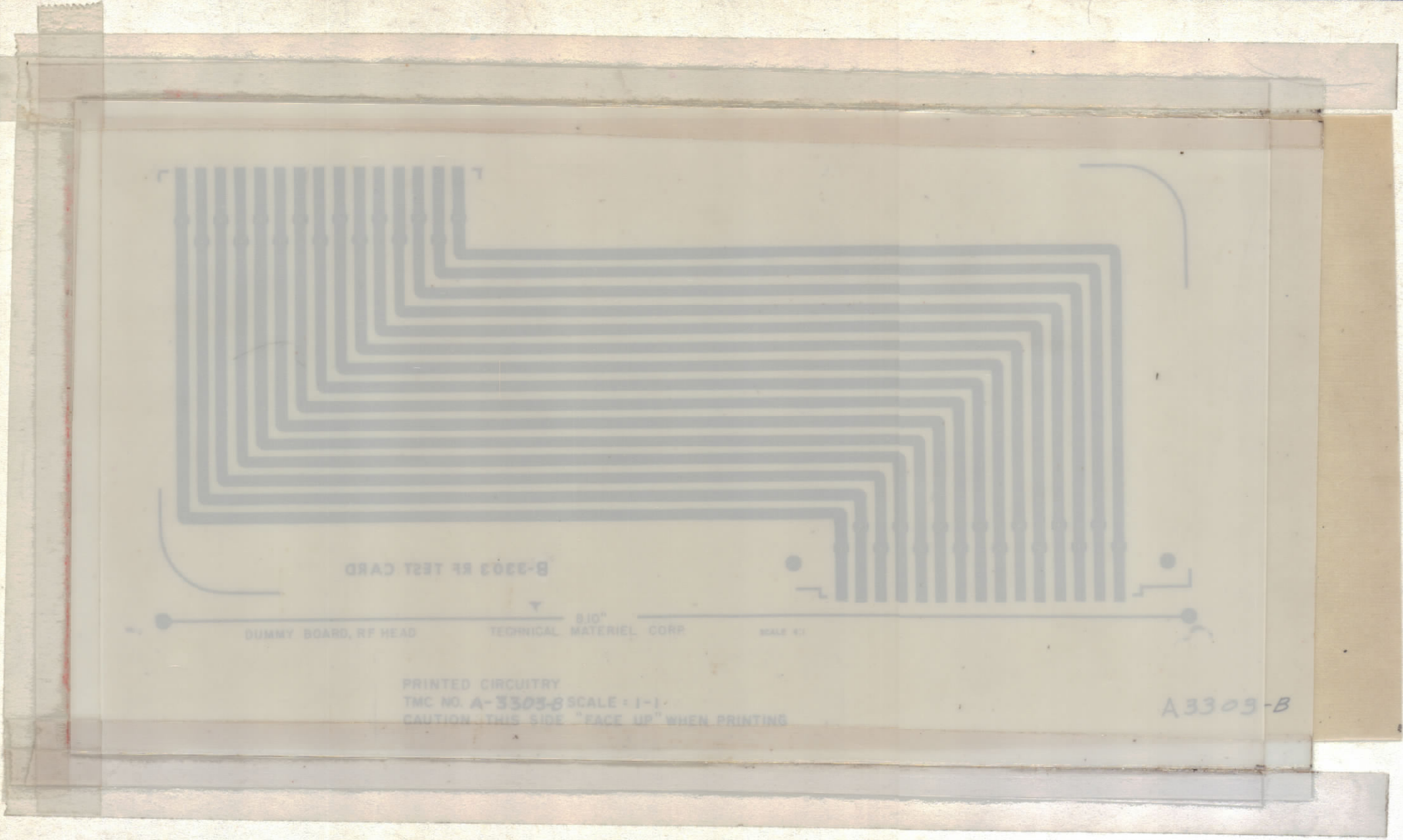


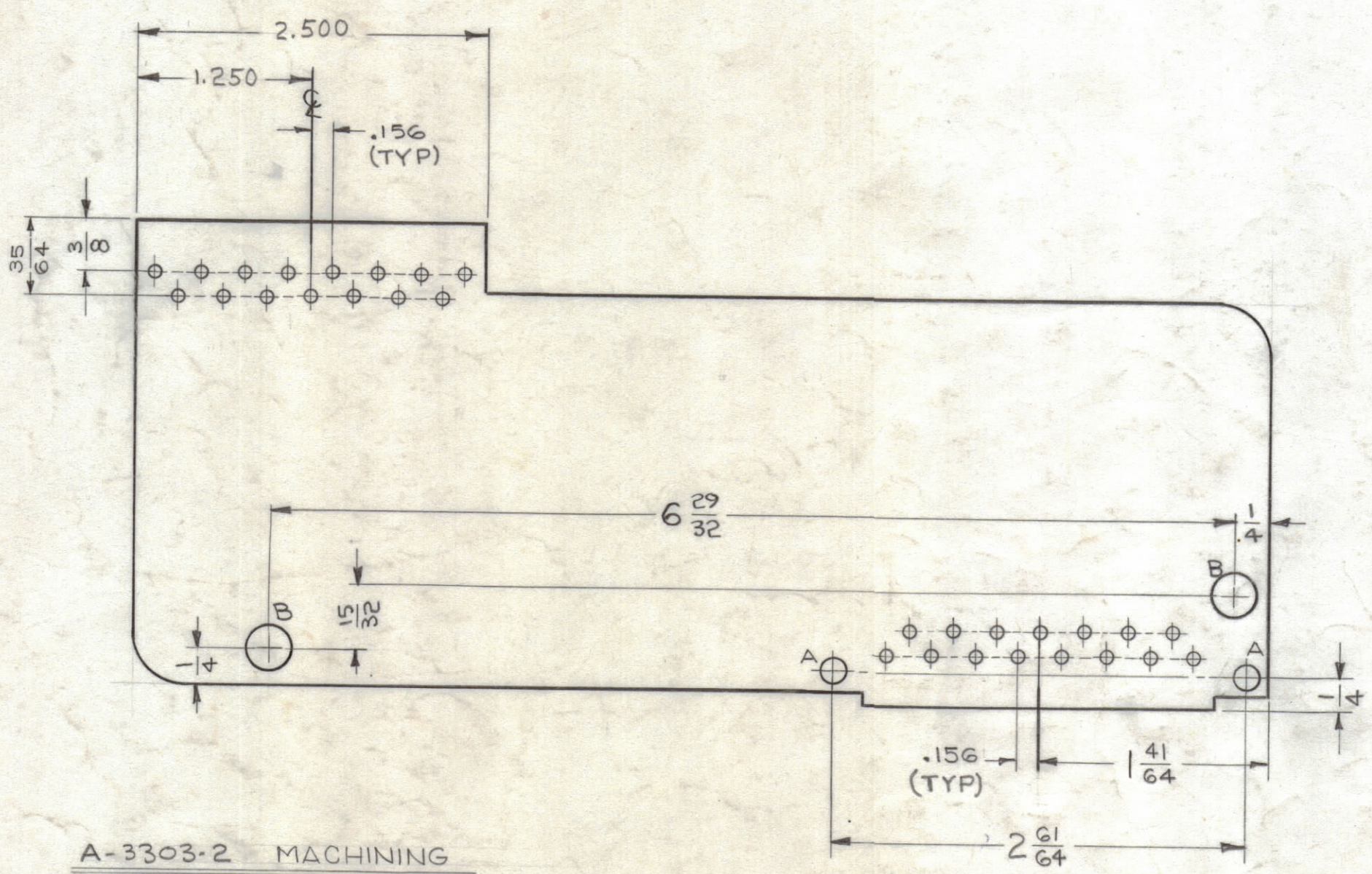
| REVISIONS |     |  |         |            |        |      |      |
|-----------|-----|--|---------|------------|--------|------|------|
| ZONE      | SYM | DESCRIPTION  | DATE    | E.M.N. NO. | DRAFT  | CHKD | APPD |
| #         | X1  | SEE SHEET 2, (2) "B" HOLES ADDED                                   | 2/20/64 | 1          | BY     |      | 233  |
| #         | O   | ORIGINAL RELEASE FOR PRODUCTION                                    | 5-14-64 | 0          | A.M.   |      |      |
| #         | A   | DIM. 2.500 WAS "A", DIM 1.250 WAS "B",<br>NOTE DIM. A & B DELETED. | 10-1-64 | 12455      | J.L.   | @    |      |
|           | B   | SEE SHEET 2 OF 2   | 8/17/65 | 14680      | H.V.V. |      |      |

ORIGINAL ARTWORK TO BE REMOVED FROM PROTECTIVE POCKETS WHEN PHOTOGRAPHING.  
NOTE DOUBLE POCKETS.

| HOLE & PAD SPECIFICATIONS |       |          |        |
|---------------------------|-------|----------|--------|
| HOLE                      | DIA.  | PAD DIA. | REQ'D. |
| UNMARKED                  | .080  | .140     | 30     |
| A                         | 11/64 | NONE     | 2      |
| B                         | 1/4   | NONE     | 2      |



ETCHING, PRINTED CIRCUIT (A-3303-1)



- DIMENSION "A" TO HAVE HOLE SPECIFICATION CORRECTOR, INC. (CORRECTOR #65-093-15)
  - DIMENSION "B" TO BE LOCATED BY CENTER OF PIN #6 ON ABOVE CONNECTOR.
1. - BOARD SPECIFICATIONS:
- A - BASE MATERIAL - EPOXY G-10
  - B - THICKNESS - 3/32
2. - PLATING SPECIFICATIONS:
- A - BOARD TO BE PLATED ON BOTH SIDES
  - B - COPPER FOIL, 2 OUNCES. THEN NICKEL PLATE .0002 TO .0003.
  - C - FINISH GOLD PLATE 20 TO 25 MILLIONTHS.

ORIGINAL ARTWORK TO BE SUPPLIED BY TMC FOR PHOTOGRAPHING (SCALE - 1:1)

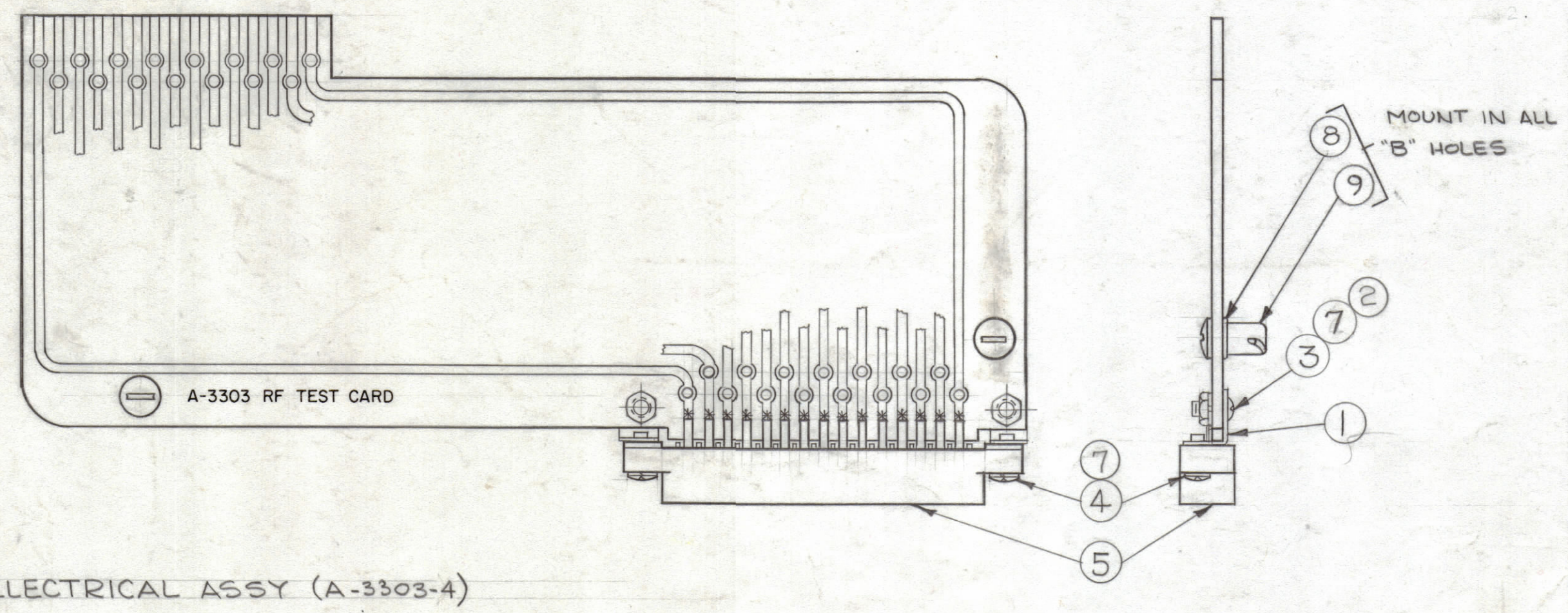
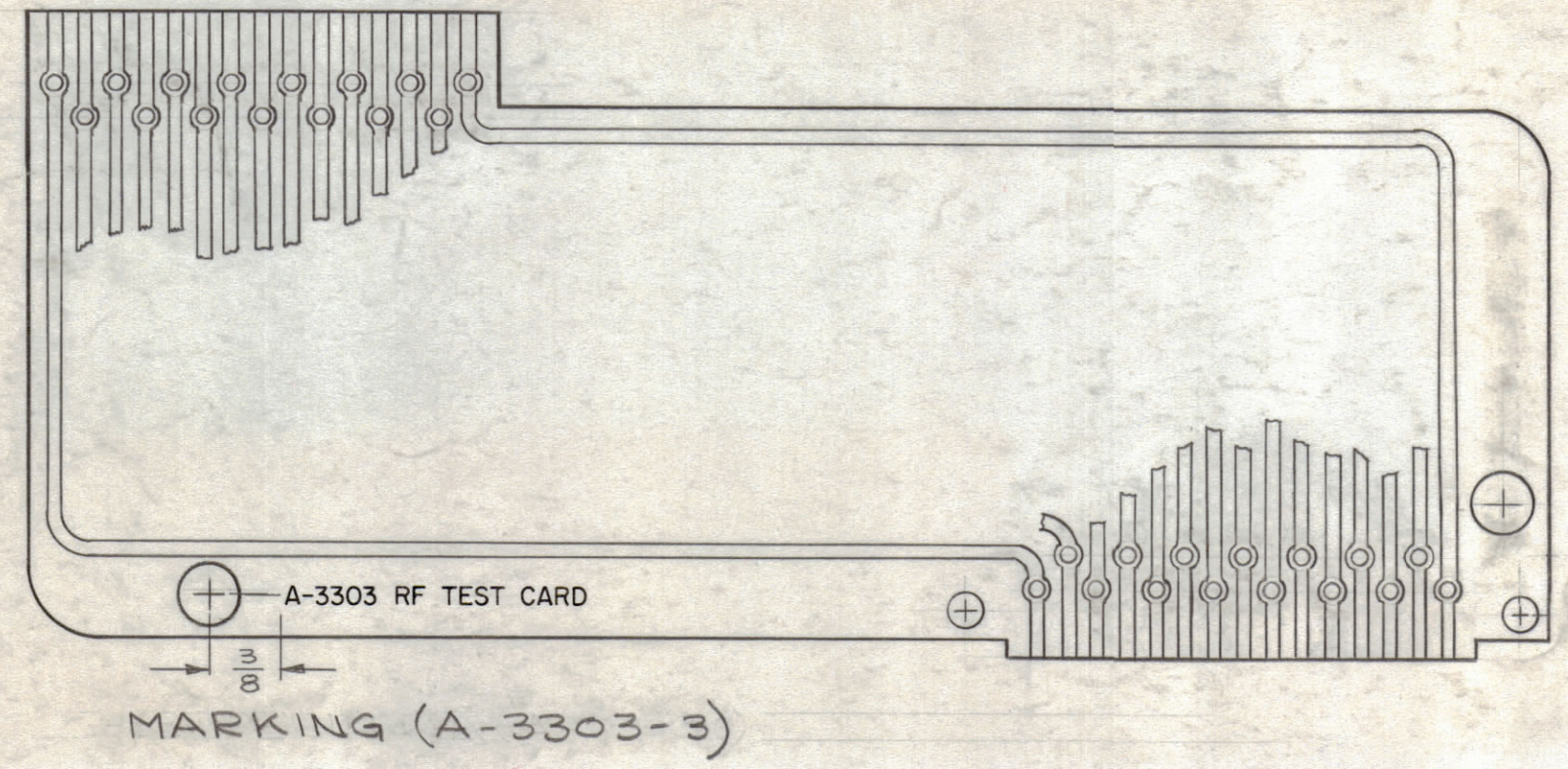
| REQ'D.  | ITEM       | PART NUMBER  | DESCRIPTION      | SYMBOL          |
|---|------------|--|------------------|-----------------|
|   | M. GELLMAN |  | LIST OF MATERIAL |                 |
| MATERIAL  |            | SEE BOARD SPECS.                                     |                  |                 |
| FINISH  |            | SEE PLATING SPECS.                                   |                  |                 |
|   |            | THE TECHNICAL MATERIEL CORP.<br>MAMARONECK, NEW YORK |                  |                 |
|   |            | PRINTED CIRCUIT BOARD, ASSY<br>(R.F. TEST CARD)      |                  |                 |
| SCALE   | 1:1        | MODEL USED ON  | CODE             | ASS'Y. NO.      |
| THE CONTENTS OF THIS DRAWING ARE THE EXCLUSIVE PROPERTY OF THE TECHNICAL MATERIEL CORP. ITS UNAUTHORIZED USE OR REPRODUCTION IN WHOLE OR IN PART IS STRICTLY FORBIDDEN. |            | DECIMALS   | TOLERANCES       | FRACTIONS       |
|   |            | .X ± .05   |                  | ± 1/64          |
|   |            | .XX ± .01  |                  | ANGLES ± 0° 30' |
|   |            | .XXX ± .005  |                  |                 |
| DRAWN   | DATE       | CHECKED  | DATE             | FINAL APPROVAL  |
|   | 9-30-63    |  | 5-22-64          |                 |
| ELECT. DES.   | DATE       | MECH. DES.   | DATE             |                 |
|   | 5-22-64    |  |                  |                 |
| A-3303  |            |  |                  | B               |
| SHEET 1 OF 2  |            |  |                  | REV             |

NOTES

A-3303 B

- UNLESS OTHERWISE SPECIFIED -  
 1- LETTERING TO BE 3/32 HIGH, BLACK GOTHIC.  
 2- MARKING PROCESS AS PER TMC SPEC. S-727.

| REVISIONS |     |  |         |            |        |      |      |
|-----------|-----|--|---------|------------|--------|------|------|
| ZONE      | SYM | DESCRIPTION                            | DATE    | E.M.N. NO. | DRAFT  | CHKD | APPD |
| #         | X1  | ITEM 7, 8, & 9 ADDED; SEE SHEET 2 OF 2 | 4/24/64 | 1          | JS     |      | 133  |
|           | 0   | ORIGINAL RELEASE FOR PRODUCTION        | 5/12/64 | 0          | A.M.   |      |      |
| #         | A   | SEE SHEET 1 OF 2 REVISION "A"          | 10-1-64 | 12455      | J.V.   | @    |      |
|           | 8   | ET SWAS JJ 293-155                     | 8/17/65 | 14680      | H.V.L. |      |      |



| REQ'D. | ITEM | PART NUMBER  | DESCRIPTION           | SYMBOL |
|--------|------|--------------|-----------------------|--------|
| 2      | 9    | FS-110-3     | STUD, SLOTTED HEAD    | B      |
| 2      | 8    | FS-109-3     | RING, STUD RETAINING  | B      |
| 4      | 7    | LW506MRN     | LOCKWASHER, SPLIT     |        |
| X      | 6    | BS-100       | SOLDER, SOFT          |        |
| 1      | 5    | JJ-293-155FE | CONNECTOR, RECEPTACLE |        |
| 2      | 4    | SCBP0632BN6  | SCREW, MACHINE        |        |
| 2      | 3    | SCBP0632BN4  | SCREW, MACHINE        |        |
| 2      | 2    | NTH0632BN8   | NUT, HEX.             |        |
| 2      | 1    | TE-167       | LUG, ANGLE, THREADED  |        |

| M. GELLMAN LIST OF MATERIAL |                 |   |  |           |
|-----------------------------|-----------------|---|--|-----------|
| MATERIAL                    |                 | THE TECHNICAL MATERIEL CORP.<br>MAMARONECK, NEW YORK      |  |           |
| FINISH                      |                 | TITLE<br>PRINTED CIRCUIT BOARD, ASSY.<br>(R.F. TEST CARD) |  |           |
| DRAWN<br>G. Jensen          | DATE<br>10-1-63 | FINAL APPROVAL<br>[Signature]                             |  | DATE      |
| CHECKED<br>[Signature]      | DATE<br>5-22-64 | A-3303  |  | B         |
| ELECT. DES.<br>[Signature]  | DATE<br>5-22-64 | SHEET 2 OF 2  |  | REV. LTR. |
| MECH. DES.<br>[Signature]   | DATE<br>5-7-64  |   |  |           |

\* - SOLDER CONTACTS TO PRINTED CIRCUIT BOARD AS INDICATED.

NOTES

| VLR-1   |               |           |
|---|---------------|-----------|
| Q'TY./UNIT  | MODEL USED ON | ASSY. NO. |
| SCALE<br>1:1  | CODE<br>A     |           |
| THE CONTENTS OF THIS DRAWING ARE THE EXCLUSIVE PROPERTY OF THE TECHNICAL MATERIEL CORP. ITS UNAUTHORIZED USE OR REPRODUCTION IN WHOLE OR IN PART IS STRICTLY FORBIDDEN. |               |           |

UNLESS OTHERWISE SPECIFIED DIMENSIONS ARE IN INCHES AND INCLUDE CHEMICALLY APPLIED OR PLATED FINISHES

|  |            |   |
|--|------------|---|
| DECIMALS<br>.X ± .05<br>.XX ± .01<br>.XXX ± .005 | TOLERANCES | FRACTIONS<br>± 1/64<br>ANGLES<br>± 0° 30' |
|--|------------|---|

A-3303 B