

THE CONTENTS OF THIS DRAWING ARE THE EXCLUSIVE PROPERTY OF THE TECHNICAL MATERIEL CORP. ITS UNAUTHORIZED USE FOR REPRODUCTION IN WHOLE OR IN PART IS STRICTLY FORBIDDEN.

REQ. PER UNIT

1

USED ON

MODEL

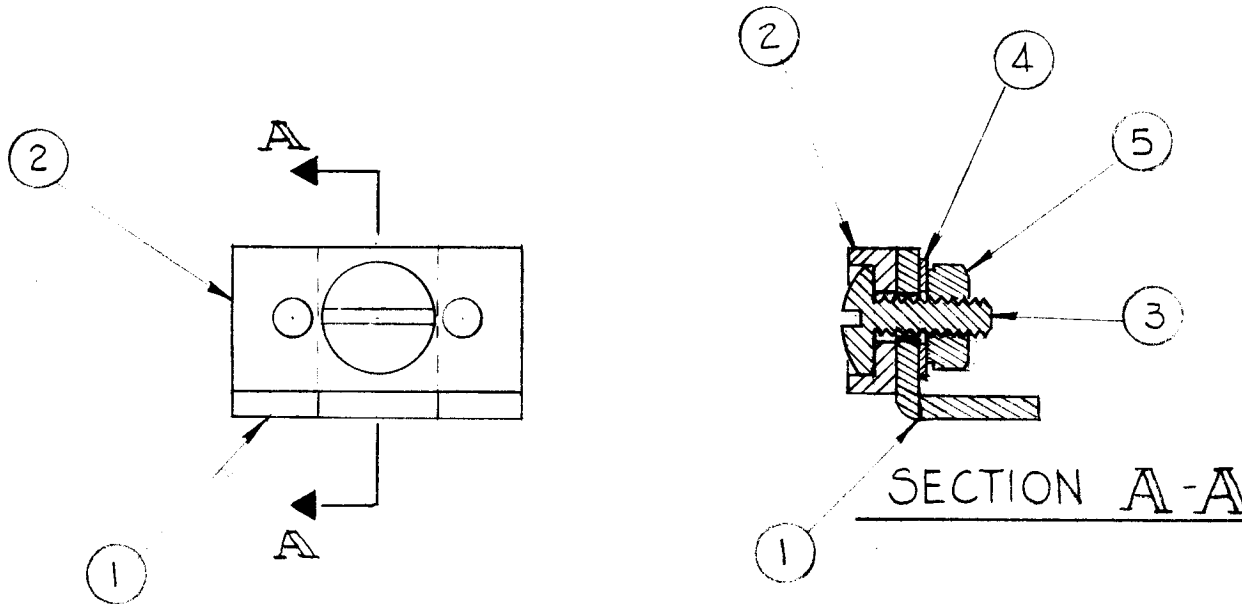
GPR-92

ASS'Y. NO.

DATE

6-25-63

A3340



1	5	NT-137-0632	NUT, HEX, NYLON
1	4	LWE06MRN	LOCK WASHER EXTERNAL
1	3	SG-143-0632B5	SCREW, MACHINE, NYLON
1	2	IM-216	INSULATOR
1	1	MS-3437	BRACKET, MOUNTING

SYM	DESCRIPTION	DATE	CH. NO.	DRAFTS	CHECKER	ENG. APP.	REQ. ITEM	PART NO.	STRUMER DESCRIPTION	SYMBOL
UNLESS OTHERWISE SPECIFIED DIMENSIONS ARE IN INCHES AND INCLUDE CHEMICALLY APPLIED OR PLATED FINISHES							STOCK SIZE		THE TECHNICAL MATERIEL CORP. MAMARONECK, NEW YORK	
SCALE 2:1							MATERIAL		BRACKET MTG. ASSY.	
TOLERANCES							TYPE & TEMPER HEAT TREAT. SPEC.		G.D.L. <i>JML</i> 7/8/63	
DECIMALS X ± .05 XX ± .01 XXX ± .005							FINISH & SPEC. NO.		DRAWN <i>JML</i> CHECKED <i>MP</i> 7/8/63	
FRACTIONS ± 1/64 ANGLES ± 0° 30'									FINAL APPROVAL <i>TFH</i> 7.8.63	
									A3340	
									ELEC. DES. APP. MECH. DES. APP.	

ITEM NO.	SYMBOL(S)	USED ON				
		REQ. PER UNIT	MODEL	ASS'Y. NO.	DATE	
		1	HSP-3	A-3343	11-6-63	A-3343
1	L9214 THRU L9226					
2	C9201 THRU C9213					
4	R9203, 9204, 9205, 9206					
19	T9201, 9202, 9203, 9204					
ITEM NO.	USED TO MOUNT	QUAN.				
5	RW-107-5	4				
6	RW-107-5	4				
6	TF-261	8				
7	RW-107-5	4				
7	TF-261	8				
8	TE-102-2	13				
9	RW-107-5	4				
11	RW-107-5	4				
12	RW-107-5	8				
13	TE-102	13				
14	TE-102	13				
15	TE-102	26				
16	TE-102	13				
18	RW-107 WIRING	0-2				
20	TF-261	4				

REQ. PER UNIT	ITEM	PART NO.	DESCRIPTION	SYMBOL
8	20	SCBP0632BN4	SCREW, MACHINE	
4	19	TF-261	TRANSFORMER, AUDIO	
0-2	18	WL-100-6	WIRE, BUSS, SIZE 20	
X	17	BS-100	SOLDER, SOFT	
13	16	TE-104-1	TERMINAL, LUG, NO.4	
26	15	LWE04MRN	WASHER, LOCK, EXTERNAL	
13	14	SCBP0440BN4	SCREW, MACHINE	
13	13	TE-149-120	TERMINAL, LUG	
8	12	WA-102-4	WASHER, FIBRE, SHOULDER	
4	11	TE-104-2	TERMINAL, LUG NO. 6	
26	10	TE-102-2	TERMINAL, TURRET	
4	9	SCBP0632BN22	SCREW, MACHINE	
13	8	SCBP0440BN3	SCREW, MACHINE	
12	7	NTH0632BN8	NUT, HEXAGON	
12	6	LWE06MRN	WASHER, LOCK, EXTERNAL	
4	5	FW06HBN	WASHER, FLAT	
4	4	RW-107-5	RESISTOR, FIXED, WIREWOUND	
1	3	MS-3597	CHASSIS, BOTTOM	
13	2	CM15C511J	CAPACITOR, FIXED, MICA	
13	1	CL-270-10	COIL, RF, FIXED	

REQ. PER UNIT	ITEM	PART NO.	DESCRIPTION	SYMBOL							
			I. JOHNSON								
STOCK SIZE			THE TECHNICAL MATERIEL CORP. MAMARONECK, NEW YORK								
			BOTTOM CHASSIS, ASSEMBLY								
MATERIAL			HSP-3								
UNLESS OTHERWISE SPECIFIED DIMENSIONS ARE IN INCHES AND INCLUDE CHEMICALLY APPLIED OR PLATED FINISHES			SCALE								
DECIMALS .X ± .05 .XX ± .01 .XXX ± .005			FRACTIONS ± 1/64 ANGLES ± 0° 30'								
TOLERANCES			CODE A								
DATE 3/19/64			ORIGINAL RELEASE FOR PRODUCTION								
SYM	DESCRIPTION	DATE	CH. NO.	DRAFTS	CHECKER	ENG. APP.					
TYPE & TEMPER			HEAT TREAT. SPEC.			DRAWN		CHECKED		FINAL APPROVAL	
						JMS		@		RDC 3/19/64	
FINISH & SPEC. NO.			ELEC. DES. APP.			MECH. DES. APP.		A-3343			

REQ. PER UNIT	USED ON			A-3344	○
	MODEL	ASS'Y. NO.	DATE		
1	HSP-3	A-3345	11-6-63		

ITEM NO.	SYMBOL(S)
1	L9201 THRU 9213
5	TB9201, 9202, 9203

ITEM NO.	USED TO MOUNT QUAN.
2	TM-100-16 6
4	TM-100-16 6
6	TM-100-16 12
7	TM-100-16 12
8	TM-100-16 12
9	TM-100-16 6
10	CL-270 WIRING 1-8
12	CA-837 WIRING 2-5
13	TM-100 WIRING 0-10
14	TM-100 GROUND 1-9

X	15	BS-100	SOLDER, SOFT
1-9	14	WL-100-4	WIRE, BUSS, SIZE 16
0-10	13	WL-100-6	WIRE, BUSS, SIZE 20
2-5	12	PX-100-1-.095	SLEEVING, SIZE 11, BLACK
1	11	CA-837	CABLE, MAIN
1-8	10	PX-104-7-.034	SLEEVING, SIZE 20, GRAY
6	9	TE-149-120	TERMINAL, LUG
12	8	SCBP0440BN8	SCREW, MACHINE
12	7	NTH0440BN6	NUT, HEXAGON
12	6	LWE04MRN	WASHER, LOCK, EXTERNAL
3	5	TM-100-16	TERMINAL BOARD, BARRIER TYPE
3	4	PX-337-16	INSULATOR, TERMINAL BOARD
1	3	MS-2952 (LD-1409)	CHASSIS, WRAPAROUND
6	2	MS-154-1	PLATE, STRADDLE
13	1	CL-270-10	COIL, RF, FIXED

REQ.	ITEM	PART NO.	DESCRIPTION			SYMBOL
			I. JOHNSON			
STOCK SIZE			THE TECHNICAL MATERIEL CORP. MAMARONECK. NEW YORK			
MATERIAL			WRAPAROUND CHASSIS, ASSEMBLY			
			HSP-3			
SYM	DESCRIPTION	DATE	CH. NO.	DRAFTS	CHECKER	ENG. APP.
○	ORIGINAL RELEASE FOR PRODUCTION	3/19/64				
UNLESS OTHERWISE SPECIFIED DIMENSIONS ARE IN INCHES AND INCLUDE CHEMICALLY APPLIED OR PLATED FINISHES		SCALE				
DECIMALS .X ± .05 .XX ± .01 .XXX ± .005	TOLERANCES	FRACTIONS ± 1/64 ANGLES ± 0° 30'	CODE A			
TYPE & TEMPER		HEAT TREAT. SPEC.	DRAWN	CHECKED	FINAL APPROVAL	
FINISH & SPEC. NO.		ELEC. DES. APP.	MECH. DES. APP.	A-3344		○

REQ. PER UNIT	USED ON			A-3345	○
	MODEL	ASS'Y. NO.	DATE		
1	HSP-3		11-6-63		

ITEM NO.	USED TO MOUNT	QUAN.
5	MS-2864	9
	A-3343	9
6	MS-2864	9
	A-3343	
7	A-2579	4

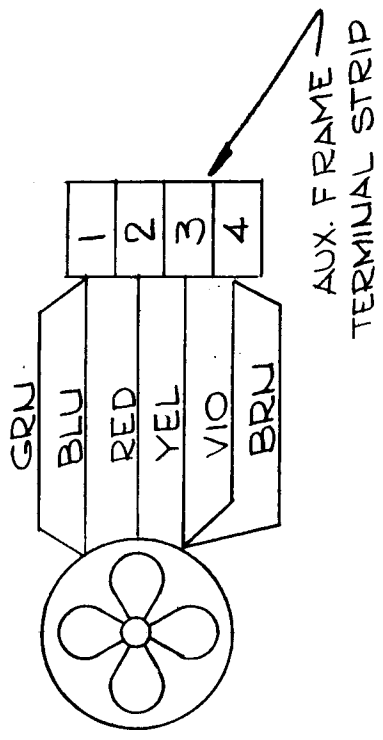
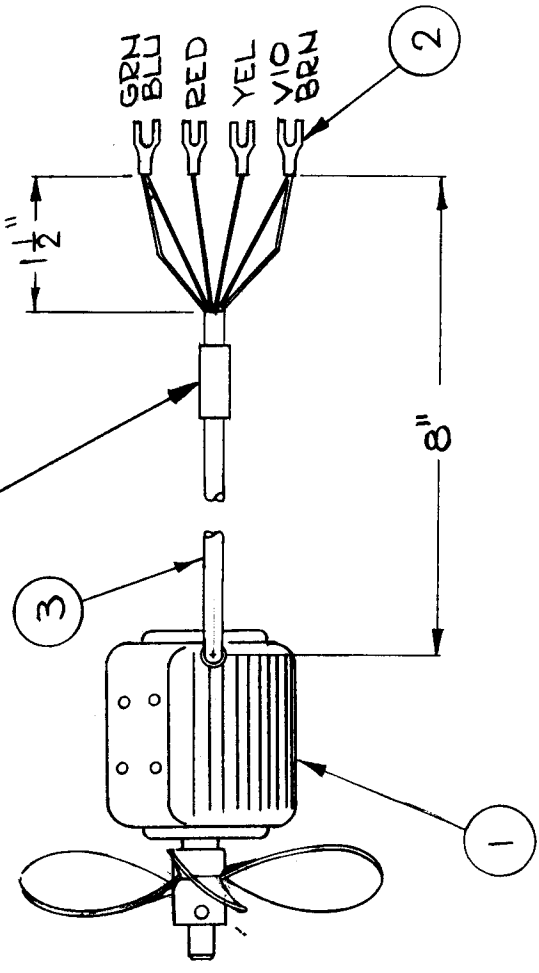
X	8	BS 100	SOLDER, SOFT	
4	7	SCBP0632BN7	SCREW, MACHINE	
18	6	SCBP0632BN4	SCREW, MACHINE	
18	5	LWE06MRN	WASHER, LOCK, EXTERNAL	
1	4	MS-2864	COVER, TOP	
1	3	A-3344	WRAPAROUND CHASSIS	
1	2	A-3343	BOTTOM CHASSIS ASSEMBLY	
1	1	A-2579	FRONT PANEL ASSEMBLY	

REQ. ITEM	PART NO.	I. JOHNSON DESCRIPTION			SYMBOL
_____		THE TECHNICAL MATERIEL CORP. MAMARONECK, NEW YORK			
STOCK SIZE		FINAL ASSEMBLY			
_____		HSP-3			
MATERIAL	_____	<i>YMS</i>	<i>@</i>	<i>RJC 2/18/64</i>	
TYPE & TEMPER	HEAT TREAT. SPEC.	DRAWN	CHECKED	FINAL APPROVAL	
_____	_____	<i>[Signature]</i>	<i>[Signature]</i>	A-3345 ○	
FINISH & SPEC. NO.	_____	ELEC. DES. APP.	MECH. DES. APP.		

SYM	DESCRIPTION	DATE	CH. NO.	DRAFTS	CHECKER	ENG. APP.
○	ORIGINAL RELEASE FOR PRODUCTION	3/19/64				
	UNLESS OTHERWISE SPECIFIED DIMENSIONS ARE IN INCHES AND INCLUDE CHEMICALLY APPLIED OR PLATED FINISHES	SCALE				
DECIMALS	FRACTIONS	CODE				
X ± .05	± 1/64	A				
XX ± .01	ANGLES					
XXX ± .005	± 0° 30'					

REQ. PER UNIT	1
MODEL	GPT-40KC03
USED ON	ASSY. NO.
DATE	11/13/63
A-3347	

LABEL TO CONTAIN FOLLOWING INFO:
 TMC No. A-3347
 230 VAC



REQ. ITEM	PART NO.	DESCRIPTION	SYMBOL
X 4	BS-100	SOLDER, SOFT	
0-9 3	PX-100-1-234	SLEEVING, SIZE 3	BLK
4 2	TE-120-2	TERMINAL, LUG	
1 1	BL-108	FAN, AXIAL	
R. HAY		DESCRIPTION	
THE TECHNICAL MATERIEL CORP.			
MAMARONECK.			
NEW YORK			
FAN, AXIAL, ASSEMBLY			
230 V			
MATERIAL			
CHECKED			
DRAWN			
TYPE & TEMPER		HEAT TREAT. SPEC.	
FINISH & SPEC. NO.			
SCALE		NONE	
DATE			
CH. NO.			
DRAFTS			
CHECKER			
ENG. APP.			
UNLESS OTHERWISE SPECIFIED			
DIMENSIONS ARE IN INCHES AND INCLUDE			
CHEMICALLY APPLIED OR PLATED FINISHES			
TOLERANCES		FRACTIONS	CODE
.X ± .05		± 1/64	A
.XX ± .01		ANGLES	
.XXX ± .005		± 0° 30'	
APPROVAL			
DRAWN			
CHECKED			
DATE			
ELEC. DES. APP.			
MECH. DES. APP.			
A-3347			

REQ. PER UNIT	USED ON			A
	MODEL	ASS'Y. NO.	DATE	
1	VLRA-1		11/12/64	A3366

SYMBOL(S)	ITEM NO.	USED TO MOUNT	QTY
	11	A3560	4
	12	A3560	4

CUT HERE
GUARANTEED
12-63

4	12	SCBP0440BN4	SCREW, MACH.
4	11	LWE04MRN	WASHER, LK, EXT.
1	10	MS3403	COVER, TOP
1	9	MS3402	COVER, BOTTOM
1	8	AX434	VLRA-1 SUBASSY
1	7	AX433	POWER SUPPLY
1	6	AX432-XX	RF MODULE
1	5	AX431	AF MODULE
1	4	AX425	IF MODULE
1	3	AX424	BFO MODULE
1	2	AP119	PANEL ASSY BLANK
1	1	A3560	TEST CARD ASSY

NOTE 1. QUANTITY AND FREQUENCY OF RF MODULES, AX432, DETERMINED BY CUSTOMERS REQUEST. MAXIMUM PER UNIT, QUANTITY 10. BLANK PANEL, AP119, SHALL BE USED FOR ALL SPACES WHEN LESS THAN 10 RF MODULES ARE REQUIRED.

NOTE 1

NOTE 1

SYM	DESCRIPTION	DATE	CH. NO.	DRAFTS	CHECKER	ENG. APP.	REQ.	ITEM	PART NO.	POSE	DESCRIPTION	SYMBOL	
A	WTM & B/M: FT. 11 & 12 ADD.	3-22-65	1-2-65	J.L.	J.P.S.						THE TECHNICAL MATERIEL CORP. MAMARONECK. NEW YORK VLRA-1 FINAL ASSEMBLY		
Ø	ORIGINAL RELEASE FOR PRODUCTION	12-14-64	-	Ⓢ									
UNLESS OTHERWISE SPECIFIED DIMENSIONS ARE IN INCHES AND INCLUDE CHEMICALLY APPLIED OR PLATED FINISHES							SCALE		MATERIAL		ENG COORD		
DECIMALS .X ± .05 .XX ± .01 .XXX ± .005							FRACTIONS ± 1/64 ANGLES ± 0° 30'		CODE		TYPE & TEMPER HEAT TREAT. SPEC.		FINISH & SPEC. NO.
TOLERANCES											DRAWN CHECKED FINAL APPROVAL		A3366
											ELEC. DES. APP. MECH. DES. APP.		A

SYMBOL(S)	ITEM NO.	USED TO MOUNT	QTY	USED ON			A3367	Ø
				REQ. PER UNIT	MODEL	ASS'Y. NO.		
				1	VLRA -1/AX434	AX434	3/17/65	
DS301,302	1			1	31	TS106-3	LIGHT,IND-GRN-BAT	
	2	R309 WRG		1	30	TS106-1	LIGHT,IND-RED-PWR	
	3	HA102-7	4	4	29	TE111-2	TERM.,LUG-3/8D	
C304	4			2	28	SCFP0440BN6	SCR,MACH	
	7	J320	1	1	27	SW333	SW,ROTARY-AGC DECAY	
		R301	2	1	26	SW332	SW,ROTARY	
		R302	2	1	25	ST22N	SW,TOGGLE-DPDT-AF/RF	
		R307	2	1	24	ST22K	SW,TOGGLE-DPST-PWR BAT.	
		R309	2	4	23	SFB0256SN3	SCR,TAP.,THD CTG	
		S303	2	4	22	SCFP1032BN8	SCR,MACH	
J320	9			1	21	RV4NAYSA352AYY	RES,VAR-COMP-RF GAIN	
	11	FS121-2,FP198	10	1	20	RV4NAYSA253AYY	RES,VAR-COMP-NOISE SIL	
M301	14			1	19	RV4NAYSA102AYY	RES,VAR-COMP-AF GAIN	
	16	FS121-2,FP198	10	1	18	RV4NAYSA101AYY	RES,VAR-COMP-LINE LVL	
	17	R309 WRG	1	1	17	RC20GF151K	RES,FXD,COMP	
R309	18			10	16	NTH0440BN6	NUT,PLN,HEX	
R307	19			1	15	NP611	PLATE,IDENT	
R301	20			1	14	MR171	METER,AF/RF LVL	
R302	21			3	13	MP123-3FB	KNOB-BFO,AF GAIN,CHAN SEL	
	22	HA102-7,CU139-2B	4	4	12	MP123-1FB	KNOB	
	23	NP611	4	10	11	LWS04MRN	WASH.,LK,SPLIT	
S302	24			1	10	LD1335/MS3405	PNL,FRONT	
S304	25			1	9	JJ034	JACK,TEL	
S301	26			2	8	HA102-7BN	HDL,BOW	
S303	27			11	7	FW37HBN	WASH.,FLAT	
	28	CT100-2	2	10	6	FS121-2	STUD,SNAPSLIDE	
	29	RV4	4	1	5	FP198	CONT,ELEC	
XDS301	30			1	4	CT100-2	CAP.,VAR,AIR	
XDS302	31			4	3	CU139-2B	FRL,HDL	
				2	2	BS100	SOLDER,TIN ALY	
				2	1	BI101-1819	LAMP,INCAND	

REQ.	ITEM	PART NO.	POSE	DESCRIPTION	SYMBOL
				THE TECHNICAL MATERIEL CORP.	
				MAMARONECK. NEW YORK	
			STOCK SIZE	PANEL ASSEMBLY,FRONT	
			MATERIAL		
			ENG COORD	<i>L. Gabel</i>	<i>M. H. King</i>
			3-17-65	6-22-65	6/23/65
			TYPE & TEMPER	HEAT TREAT. SPEC.	FINAL APPR VAL
					A3367
			FINISH & SPEC. NO.	ELEC. DES. APP.	MECH. DES. APP.

SYMBOL(S)	ITEM NO.	USED TO MOUNT	QTY
-----------	----------	---------------	-----

REQ. PER UNIT	USED ON			A3368	Ø
	MODEL	ASS'Y. NO.	DATE		
1	VLRA-1/AX434	AX434	3/18/65		

2	FS102	12
4	FS102	12
5	FS102	12
6	TK115	4

4	6	SCFP1032BN7	SCR, MACH
12	5	SCFP0348BN4	SCR, MACH
12	4	NTH0348BN6	NUT, PLN, HEX
1	3	MS3406	PL, SD, LEFT
12	2	LWS03MRN	WASH., LK, SPLIT
6	1	FS102-1	LOCKSPRING

REQ.	ITEM	PART NO.	DESCRIPTION	SYMBOL
			POSE	
			THE TECHNICAL MATERIEL CORP. MAMARONECK. NEW YORK	
			STOCK SIZE	
			PLATE ASSEMBLY, LEFT SIDE	
			MATERIAL	
			TYPE & TEMPER HEAT TREAT. SPEC.	
			FINISH & SPEC. N .	
			DRAWN CHECKED	
			ELEC. DES. APP. MECH. DES. APP.	
			FINAL APPROVAL	
			A3368	
			Ø	

Ø ORIGINAL RELEASE 4/23/65

UNLESS OTHERWISE SPECIFIED
DIMENSIONS ARE IN INCHES AND INCLUDE
CHEMICALLY APPLIED OR PLATED FINISHES

DECIMALS .X ± .05
.XX ± .01
.XXX ± .005

FRACTIONS ± 1/64
ANGLES ± 0° 30'

TOLERANCES

SYMBOL(S)	ITEM NO.	USED TO MOUNT	QTY
	1	CX110	4
SEE CHART	2		
	4	CP07	4
	5	CP07	4

REQ. PER UNIT	USED ON			A3371	Ø
	MODEL	ASS'Y. NO.	DATE		
1 EA	AX466	A3406	10/7/64		

TMC PART NO.	ITEM 3	ITEM 2 SYMBOLS
A3371-1	LD1425/MS3625	C6401,6402
A3371-2	LD1426/MS3625	C6403,6404

NOTE: CP07SA2 MUST BE MODIFIED BY CUTTING 1/2 IN. OFF THREADED STUD.

4	5	NTH1032BN12	NUT, PLAIN, HEX	
4	4	LWE10MRN	WASHER, LOCK, EXTERNAL	
1	3	SEE CHART	BRACKET, MOUNTING, CAPACITOR	
2	2	CX110-2	CAPACITOR, FIXED, PLASTIC	
4	1	CP07SA2	RETAINER, CAP.	

REQ.	ITEM	PART NO.	DESCRIPTION	SYMBOL
THE TECHNICAL MATERIEL CORP. MAMARONECK, NEW YORK				
CAPACITOR ASSEMBLY, C6403, 6404				
MATERIAL				
UNLESS OTHERWISE SPECIFIED DIMENSIONS ARE IN INCHES AND INCLUDE CHEMICALLY APPLIED OR PLATED FINISHES			ENG COORD	<i>R. Gabil</i> 10/10/64
DECIMALS .X ± .05 .XX ± .01 .XXX ± .005		TOLERANCES	FINAL APPROVAL	
FRACTIONS ± 1/64 ANGLES ± 0° 30'		CODE	A3371	
TYPE & TEMPER HEAT TREAT. SPEC.			DRAWN	<i>A 26</i>
FINISH & SPEC. NO.			ELEC. DES. APP.	MECH. DES. APP.

SYMBOL(S)	ITEM NO.	USED TO MOUNT	QTY	REQ. PER UNIT	USED ON			A3376	Ø
					MODEL	ASS'Y. NO.	DATE		
				1	MAF-1	A3375	10/7/64		

1	HA102		4	4	30	TE135-22	NUT, PLAIN, ROUND
3	MS3619		9	4	29	SCFP0632BN8	SCREW, MACHINE
6	NP629		4	4	28	SCBP0832BN8	SCREW, MACHINE
7	PM1024		12	4	27	SCBP0632BN7	SCREW, MACHINE
	PM1025		4	4	26	SCBP0632BN5	SCREW, MACHINE
8	FS107/TE135		4	9	25	SCBP0440BN6	SCREW, MACHINE
	MS3618		4	4	24	SCBP0348BN3	SCREW, MACHINE
9	MS3623		4	8	23	SC131-0632BN6	SCREW, MACHINE, UNDERCUT
10	MS3619		9	16	22	SC131-0440BN3	SCREW, MACHINE, UNDERCUT
16	NP629		4	2	21	PM1028	SUPPORT, END
17	MS3618		4	2	20	PM1025	GUIDE, L TYPE
18	MS3623		4	3	19	PM1024	GUIDE, T TYPE
22	PM1024		12	4	18	NTH0832BN10	NUT, PLAIN, HEX
	PM1025		4	4	17	NTH0632BN8	NUT, PLAIN, HEX
23	PM1028		8	4	16	NTH0348BN6	NUT, PLAIN, HEX
24	NP629		4	1	15	NP629	PLATE, IDENTIFICATION, COMMERCIAL
25	MS3619		9	1	14	MS3623-2	PANEL, END, RIGHT
26	MS3618		4	1	13	MS3623-1	PANEL, END, LEFT
27	FS107/TE135		4	1	12	MS3619	COVER, TOP
28	MS3623		4	1	11	MS3618	SUPPORT, TOP, FRONT
29	HA102		4	9	10	LWS04MRN	WASHER, LOCK, SPLIT
30	FS107		4	4	9	LWE08MRN	WASHER, LOCK, EXTERNAL
				8	8	LWE06MRN	WASHER, LOCK, EXTERNAL
				16	7	LWE04MRN	WASHER, LOCK, EXTERNAL
				4	6	LWE03MRN	WASHER, LOCK, EXTERNAL
				1	5	LD1427/MS3617	CHASSIS, MAIN
				2	4	HA102-11BN	HANDLE, BOW
				9	3	FW04HBN	WASH., FLAT
				4	2	FS107	STUD, FRICTION CATCH
				4	1	CU139-2B	FERRULE, HANDLE

REQ.	ITEM	PART NO.	AAL.T.	DESCRIPTION	SYMBOL		
			THE TECHNICAL MATERIEL CORP. MAMARONECK. NEW YORK				
		STOCK SIZE	CHASSIS ASSEMBLY, MAIN				
Ø	ORIGINAL RELEASE FOR PRODUCTION	10-13-64	Ø	J.L.			
SYM	DESCRIPTION	DATE	CH. NO.	DRAFTS	CHECKER	ENG. APP.	MATERIAL
UNLESS OTHERWISE SPECIFIED DIMENSIONS ARE IN INCHES AND INCLUDE CHEMICALLY APPLIED OR PLATED FINISHES		SCALE				ENG COORD <i>L. J. Bell</i>	
DECIMALS .X ± .05 .XX ± .01 .XXX ± .005		TOLERANCES ± 1/64 ANGLES ± 0° 30'		CODE	TYPE & TEMPER HEAT TREAT. SPEC. DRAWN CHECKED FINAL APPROVAL <i>R. J. [Signature]</i>		
				FINISH & SPEC. NO.		ELEC. DES. APP. MECH. DES. APP. A3376	

SYMBOL(S)	ITEM NO.	USED TO MOUNT	QTY	REQ. PER UNIT	USED ON			A3380	Ø
					MODEL	ASS'Y. NO.	DATE		
				1	MPS-1		10/8/64		

3	MS3659	8
5	MS3659	8
6	A3381	4

4	6	SCBP0632BN7	SCREW, MACHINE
8	5	SCBP0632BN5	SCREW, MACHINE
2	4	MS3659	COVER, TOP/BOTTOM
8	3	LWI06MRN	WASHER, LOCK, INTERNAL
1	2	A3382	CHASSIS ASSEMBLY
1	1	A3381	PANEL ASSEMBLY, FRONT

								REQ. ITEM	PART NO.	AAL.T.	DESCRIPTION	SYMBOL	
											THE TECHNICAL MATERIEL CORP. MAMARONECK. NEW YORK		
									STOCK SIZE		MPS-1 FINAL ASSEMBLY		
Ø	ORIGINAL RELEASE FOR PRODUCTION	10.13.64	Ø	9F.									
SYM	DESCRIPTION	DATE	CH. NO.	DRAFTS	CHECKER	ENG. APP.			MATERIAL				
UNLESS OTHERWISE SPECIFIED DIMENSIONS ARE IN INCHES AND INCLUDE CHEMICALLY APPLIED OR PLATED FINISHES		SCALE								ENG COORD	L. Gobel 10-10-64	RA	
DECIMALS .X ± .05 .XX ± .01 .XXX ± .005		FRACTIONS ± 1/64 ANGLES ± 0° 30'		TOLERANCES		CODE			TYPE & TEMPER	HEAT TREAT. SPEC.	DRAWN	CHECKED	FINAL APPROVAL
											TRA		A3380
									FINISH & SPEC. NO.	ELEC. DES. APP.	MECH. DES. APP.		Ø

SYMBOL(S)	ITEM NO.	USED TO MOUNT	QTY	REQ. PER UNIT	USED ON			A3381	\emptyset
					MODEL	ASS'Y. NO.	DATE		
				1	MPS-1	A3380	10/8/64		

DS6080	1		
	2	HA102	4
XF6080	3		
R6084			
DS6081			
F6080	4		
	8	HA102	4
	9	NP102	4
XDS6080	10		

1	10	TS106-1	LIGHT, INDICATOR, RED
4	9	SFB0256SN3	SCREW, TAP., THD CUTTING
4	8	SCFP1032BN8	SCREW, MACHINE
1	7	NP102-63	PLATE, IDENTIFICATION, COMMERCIAL
1	6	LD1440/MS3657	PANEL, FRONT
2	5	HA102-11BN	HANDLE, BOW
1	4	FU102-.250	FUSE, CARTRIDGE, 1/4 A
1	3	FH104-7	FUSEHOLDER, INDICATOR
4	2	CU139-2B	FERRULE, HANDLE
1	1	BI101-1820	LAMP, INCANDESCENT

										REQ. ITEM	PART NO.	DESCRIPTION	SYMBOL
												THE TECHNICAL MATERIEL CORP. MAMARONECK, NEW YORK	
											STOCK SIZE	PANEL ASSEMBLY, FRONT	
\emptyset	ORIGINAL RELEASE FOR PRODUCTION	10-12-64	\emptyset	JL									
SYM	DESCRIPTION	DATE	CH. NO.	DRAFTS	CHECKER	ENG. APP.	MATERIAL				ENG COORD	<i>H. S. Hill</i> 10-10-64	<i>RAL</i>
UNLESS OTHERWISE SPECIFIED DIMENSIONS ARE IN INCHES AND INCLUDE CHEMICALLY APPLIED OR PLATED FINISHES		SCALE		TYPE & TEMPER		HEAT TREAT. SPEC.		DRAWN		CHECKED		FINAL APPROVAL	
DECIMALS .X ± .05 .XX ± .01 .XXX ± .005		FRACTIONS ± 1/64 ANGLES ± 0° 30'		TOLERANCES		CODE		<i>TRG</i>				A3381	
								FINISH & SPEC. NO.		ELEC/DES. APP.		MECH. DES. APP.	

SYMBOL(S)	ITEM NO.	USED TO MOUNT	QTY	REQ. PER UNIT	USED ON			A3382	Ø
					MODEL	ASS'Y. NO.	DATE		
				1	MPS-1	A3380	10/8/64		
CR6084	1								
Q6080	2								
C6080,6081	5								
	6	CE112	2						
J6081	7								
J6080	8								
	10	TS166-1	2						
	11	JJ200	4	1	24	TS166-1	SOCKET, SEMICONDUCTOR DEVICE		
	12	A3412	4	1	23	TF269	XMFR, POWER, STEP-DOWN		
		CU145	4	2	22	TE149-144	TERMINAL, LUG, NO. 6		
		JJ175	2	1	21	TE149-120	TERMINAL, LUG, NO. 4		
		TF269	4	4	20	TE104-4	TERMINAL, LUG-LOCKING, NO. 10		
	13	TS166-1	2	2	19	TE104-2	TERMINAL, LUG-LOCKING, NO. 6		
	14	JJ200	4	10	18	SCBP0632BN5	SCREW, MACHINE		
	15	CU145	4	4	17	SCBP0440BN5	SCREW, MACHINE		
		JJ175	2	2	16	SCBP0256BN6	SCREW, MACHINE		
		TF269	4	10	15	NTH0682BN8	NUT, PLAIN, HEX		
	16	TS166-1	2	4	14	NTH0440BN8	NUT, PLAIN, HEX		
	17	JJ200	4	2	13	NTH0256BN6	NUT, PLAIN, HEX		
	18	A3412	4	14	12	LWE06MRN	WASHER, LOCK, EXTERNAL		
		CU145	4	4	11	LWE04MRN	WASHER, LOCK, EXTERNAL		
		JJ175	2	2	10	LWE02MRN	WASHER, LOCK, EXTERNAL		
	19	JJ175 WIRING	2	1	9	LD1441/MS3658	CHASSIS, MAIN		
	20	CE112 WIRING	4	1	8	JJ200-1	CONNECTOR, RECEPTACLE, FEMALE		
	21	JJ200	1	1	7	JJ175	CONNECTOR, RECEPTACLE, ML, AC, 3C, TWLK		
	22	JJ175	2	2	6	CU145-A1	RETAINER, CAPACITOR		
T6080	23			2	5	CE112-2	CAPACITOR, FIXED, ELECTROLYTIC		
XQ6080	24			1	4	CA859	WIRING HARNESS, BRANCHED		
				1	3	A3412-4	TERMINAL BOARD, FINAL ASSEMBLY		
				1	2	2N350A	TRANSISTOR		
				1	1	1N2988B	SEMICONDUCTOR DEVICE, DIODE		

REQ.	ITEM	PART NO.	ALT.	DESCRIPTION	SYMBOL
THE TECHNICAL MATERIEL CORP.					
MAMARONECK. NEW YORK					
STOCK SIZE					
CHASSIS ASSEMBLY, MAIN					
MATERIAL					
UNLESS OTHERWISE SPECIFIED DIMENSIONS ARE IN INCHES AND INCLUDE CHEMICALLY APPLIED OR PLATED FINISHES			SCALE		
DECIMALS .X ± .05 .XX ± .01 .XXX ± .005			FRACTIONS ± 1/64 ANGLES ± 0° 30'		
TOLERANCES			CODE		
ELEC. DES. APP.			MECH. DES. APP.		
FINISH & SPEC. NO.			FINAL APPR VAL		
A3382			Ø		

REQ. PER UNIT	USED ON			A3387	Ø
	MODEL	ASS'Y. NO.	DATE		
1	MNF-1		10/8/64		

4 2 AX467 NOTCH FILTER
 1 1 A3384 MNF-1 SUBASSY

REQ.	ITEM	PART NO.	DESCRIPTION				SYMBOL
			AALT. THE TECHNICAL MATERIEL CORP. MAMARONECK. NEW YORK				
			STOCK SIZE				
			MNF-1 FINAL ASSEMBLY				
Ø			10.13.64	Ø	J.F.		
BYM			DATE	CH. NO.	DRAFTS	CHECKER	ENG. APP.
UNLESS OTHERWISE SPECIFIED DIMENSIONS ARE IN INCHES AND INCLUDE CHEMICALLY APPLIED OR PLATED FINISHES			SCALE				
DECIMALS .X ± .05 .XX ± .01 .XXX ± .005	TOLERANCES		FRACTIONS ± 1/64 ANGLES ± 0° 30'	CODE			
TYPE & TEMPER		HEAT TREAT. SPEC.	ENG COORD	DRAWN	CHECKED	FINAL APPROVAL	
			<i>J. Gabriel</i> 10-10-64	<i>T.K.C.</i>			
FINISH & SPEC. NO.		ELEC. DES. APP.	MECH. DES. APP.	A3387		Ø	

SYMBOL(S)	ITEM NO.	USED TO MOUNT	QTY
-----------	----------	---------------	-----

9	A3392 to A3393	5
	A3393	9
	A3396	6
	A3397	6
11	A3396	6
	A3397	6
13	A3396	7
	A3397	7
14	A3392 to A3393	5
	A3393	9
15	A3394	9

REQ. PER UNIT	USED ON			A3390	Ø
	MODEL	ASS'Y. NO.	DATE		
1	MCG-1	MCG-1	3/18/65		

9	15	SCBP0632BN6	SCR,MACH
14	14	SCBP0632BN5	SCR,MACH
14	13	SC131-0632BN5	SCR,MACH,UNDCT
65	12	RG174/U	CBL,RF
12	11	NTH0632BN8	NUT,PLN,HEX
2	10	MS3650	COVER, TOP/BOT
26	9	LWE06MRN	WASH.,LK,EXT
1	8	CA857	WRG HARN,BRCHD
	7	BS100	SOLDER,TIN ALY
1	6	A3397	PL ASSY,L SD
1	5	A3396	PL ASSY,R SD
1	4	A3395	PL ASSY,REAR
1	3	A3394	PNL ASSY,FRONT
1	2	A3393	CHAS ASSY,REAR
1	1	A3392	CHAS ASSY,FRONT

REQ.	ITEM	PART NO.	DESCRIPTION	SYMBOL							
			POSE								
STOCK SIZE			THE TECHNICAL MATERIEL CORP. MAMARONECK, NEW YORK								
MATERIAL			MCG-1 FINAL ASSEMBLY								
Ø	ORIGINAL RELEASE	6/23/65									
SYM	DESCRIPTION	DATE	CH. NO.	DRAFTS	CHECKER	ENG. APP.	TYPE & TEMPER	HEAT TREAT. SPEC.	ENG COORD	CHECKED	FINAL APPROVAL
UNLESS OTHERWISE SPECIFIED DIMENSIONS ARE IN INCHES AND INCLUDE CHEMICALLY APPLIED OR PLATED FINISHES		SCALE					TYPE & TEMPER	HEAT TREAT. SPEC.	ENG COORD 3-18-65	CHECKED 6-23-65	FINAL APPROVAL <i>[Signature]</i> 6/23/65
DECIMALS .X ± .05 .XX ± .01 .XXX ± .005	TOLERANCES	FRACTIONS ± 1/64 ANGLES ± 0° 30'	CODE					FINISH & SPEC. NO.	ELEC. DES. APP.	MECH. DES. APP.	A3390

SYMBOL(S)	ITEM NO.	USED TO MOUNT	QTY	USED ON					
				REQ. PER UNIT	MODEL	ASS'Y. NO.	DATE		
				1	MCG-1	A3390	3/25/65	A3394	\emptyset
I6001	1								
I6002,6003	2								
	4	HA102	4						
R6059,6060	9	SW343 WRG	2						
	10	HA102	4						
	11	NP102	4						
S6001	12								
	13	SW343	2						
XI6002	14								
XI6001	15								
XI6003	16								

1	16	TS106-3	LIGHT, IND, GRN
1	15	TS106-2	LIGHT, IND, CLEAR
1	14	TS106-1	LIGHT, IND, RED
2	13	TE111-2	TERM., LUG-3/8D
1	12	SW343	SW, ROTARY
4	11	SFB0256SN3	SCR, TAP., THD CTG
4	10	SCFP1032BN8	SCR, MACH
2	9	RC20GF101K	RES, FXD, COMP
1	8	NP102-62	PLATE, IDENT, COML
1	7	MP123-5FB	KNOB
1	6	LD1406/MS3594	PNL, FRONT
2	5	HA102-11BN	HDL, BOW
4	4	CU139-2B	FRL, HDL
	3	BS100	SOLDER, TIN ALY
2	2	BI101-44	LAMP, INCAND
1	1	BI100-51	LAMP, GLOW

SYM	DESCRIPTION	DATE	CH. NO.	DRAFTS	CHECKER	ENG. APP.	REQ.	ITEM	PART NO.	POSE	DESCRIPTION	SYMBOL		
											THE TECHNICAL MATERIEL CORP. MAMARONECK. NEW YORK PANEL ASSEMBLY, FRONT			
									STOCK SIZE					
									MATERIAL					
\emptyset	ORIGINAL RELEASE	6/23/65												
	UNLESS OTHERWISE SPECIFIED DIMENSIONS ARE IN INCHES AND INCLUDE CHEMICALLY APPLIED OR PLATED FINISHES	SCALE								3-25-65 ENG COORD	X. Gabel 6-23-65	<i>W. A. ...</i> 6/23/65		
	DECIMALS .X ± .05 .XX ± .01 .XXX ± .005	FRACTIONS ± 1/64 ANGLES ± 0° 30'	CODE							TYPE & TEMPER	HEAT TREAT. SPEC.	DRAWN	CHECKED	FINAL APPROVAL
	TOLERANCES													A3394
										FINISH & SPEC. NO.	ELEC. DES. APP.	MECH. DES. APP.		\emptyset

SYMBOL(S)	ITEM NO.	USED TO MOUNT	QTY	REQ. PER UNIT	USED ON			A3395	Ø
					MODEL	ASS'Y. NO.	DATE		
				1	MCG-1	A3390	3/26/65		
AT6001-6005	2								
J6015	3								
	5	JJ200-2	4						
	6	DL100	5						
	7	JJ200-2	4						
	8	DL100	5						
	9	JJ200-2	4						
	10	DL100	5						
	11	J6001	1						
		J6002	1						
		J6004	1						
		J6006	1						
		J6008	1						
		J6010	1						
		J6012	1						
		J6013	1	12	14	WL100-6	WIRE, ELEC, BUSS -SZ 20		
		J6014	1	14	13	UG625*/U	CONN, RECP, RF, BNC		
J6001-6014	12	JJ200-2	1	1	12	TE113-149	TERM. , LUG, NO. 6		
	13			9	11	TE111-2	TERM. , LUG, 3/8D		
	14	UG625WRG	12	5	10	SCBP0632BN4	SCR, MACH		
				4	9	SCBP0440BN5	SCR, MACH		
				5	8	NTH0632BN8	NUT, PLN, HEX		
				4	7	NTH0440BN6	NUT, PLN, HEX		
				5	6	LWE06MRN	WASH. , LK, EXT		
				4	5	LWE04MRN	WASH. , LK, EXT		
				1	4	LD1413/MS3591	PL, REAR		
				1	3	JJ200-2	CONN, RECP, ML-14/C		
				5	2	DL100-4	DUMMY LOAD, ELEC-BNC		
					1	BS100	SOLDER, TIN ALY		

REQ.	ITEM	PART NO.	POSE	DESCRIPTION	SYMBOL
STOCK SIZE			THE TECHNICAL MATERIEL CORP. MAMARONECK. NEW YORK		
MATERIAL			PLATE ASSEMBLY, REAR		
UNLESS OTHERWISE SPECIFIED DIMENSIONS ARE IN INCHES AND INCLUDE CHEMICALLY APPLIED OR PLATED FINISHES			DATE	CH. NO.	DRAFTS
SCALE			6/23/65		
DECIMALS .X ± .05 .XX ± .01 .XXX ± .005			TOLERANCES		CODE
FRACTIONS ± 1/64 ANGLES ± 0° 30'			A3395		
FINISH & SPEC. NO.			ELEC. DES. APP.	MECH. DES. APP.	

SYMBOL(S)	ITEM NO.	USED TO MOUNT	QTY
-----------	----------	---------------	-----

REQ. PER UNIT	USED ON			A3396	⊕
	MODEL	ASS'Y. NO.	DATE		
1	MCG-1	A3390	3/26/65		

2 FS102 4
4 FS102 4
5 FS102 4
6 TK115 4

4 6 SCFP1032BN8 SCR,MACH
4 5 SCFP0348BN4 SCR,MACH
4 4 NTH0348BN6 NUT,PLN,HEX
1 3 MS3592 PL,SD,LEFT
4 2 LWS03MRN WASH.,LK,SPLIT
4 1 FS102-1 LOCKSPRING

	REQ. ITEM	PART NO.	POSE	DESCRIPTION	SYMBOL	
				THE TECHNICAL MATERIEL CORP. MAMARONECK. NEW YORK		
				PLATE ASSEMBLY, LEFT SIDE		
⊕				ORIGINAL RELEASE		
				6/23/65		
SYM	DESCRIPTION	DATE	CH. NO.	DRAFTS	CHECKER	ENG. APP.
UNLESS OTHERWISE SPECIFIED DIMENSIONS ARE IN INCHES AND INCLUDE CHEMICALLY APPLIED OR PLATED FINISHES		SCALE				
DECIMALS .X ± .05 .XX ± .01 .XXX ± .005	FRACTIONS ± 1/64 ANGLES ± 0° 30'	TOLERANCES	CODE			
				3-26-65	2 gull	M. H. H. 6/23/65
		TYPE & TEMPER	HEAT TREAT. SPEC.	DRAWN	CHECKED	FINAL APPROVAL
		FINISH & SPEC. NO.		ELEC. DES. APP.	MECH. DES. APP.	
						A3396
						⊕