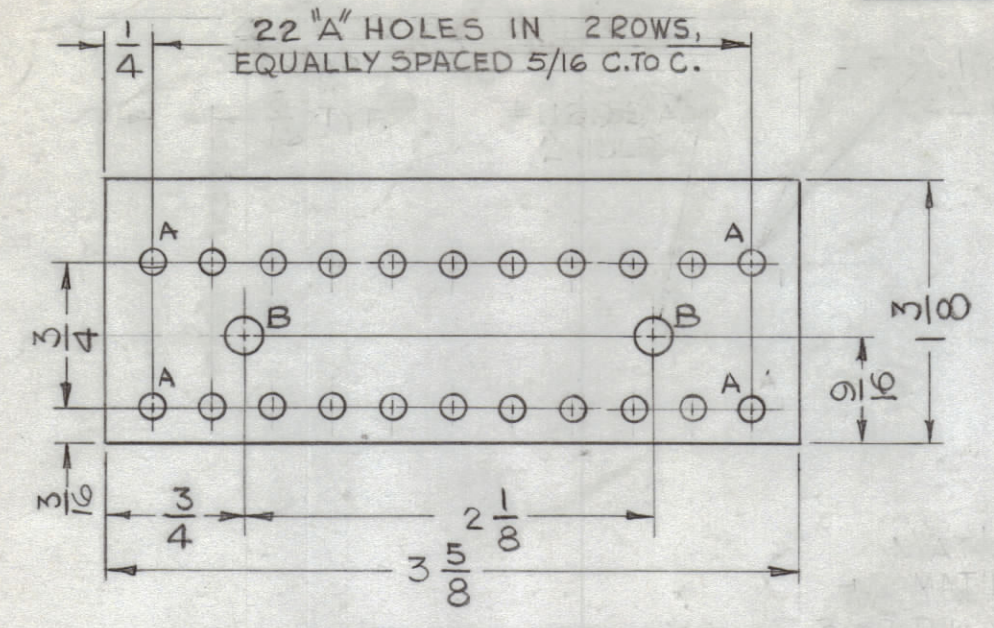


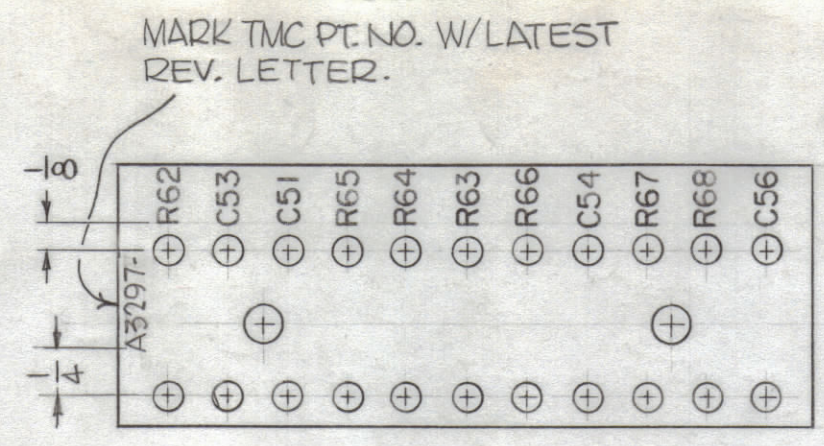
HOLE	DESCRIPTION	REQ.
A	.116 DIA.	22
B	.189 DIA.	2

MARKING PROCESS: AS PER TMC SPECIFICATION S-727.
 LETTERING: 3/32 HIGH BLACK GOTHIC, LOCATED AS SHOWN.

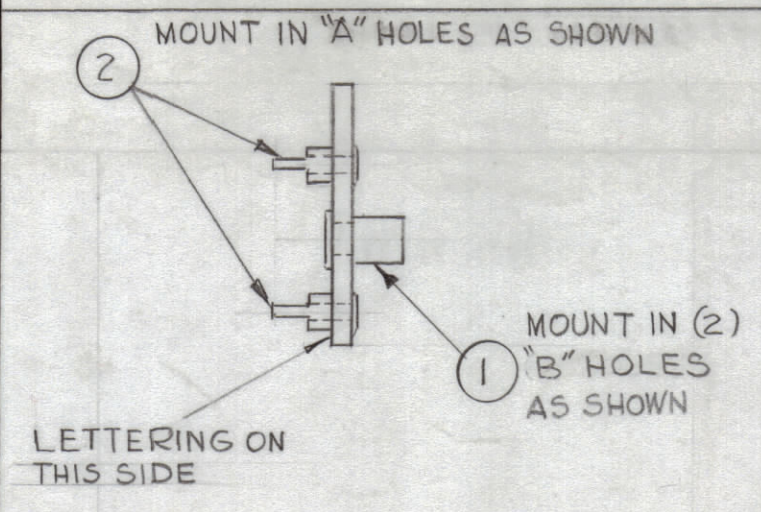
REVISIONS						
ZONE	SYM	DESCRIPTION	DATE	E.M.N. NO.	DRAFT	CHKD
A		IT. 19 WAS CN114R104K, C54, C56 PROPER CONF.	9/4/63	14252		
B		ITEMS 3 THRU 9 "J" WAS "K. ITEM 10 WAS CM20 C182J. ADD MARKING NOTE TO A3297-2	3-29-67	18047	L.A.K.	



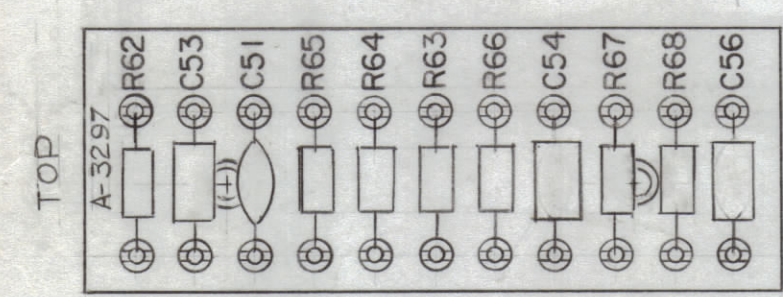
A 3297-1 MACHINING
 MATERIAL: 3/32 THK, XXXP PHENOLIC, FINISH: NATURAL



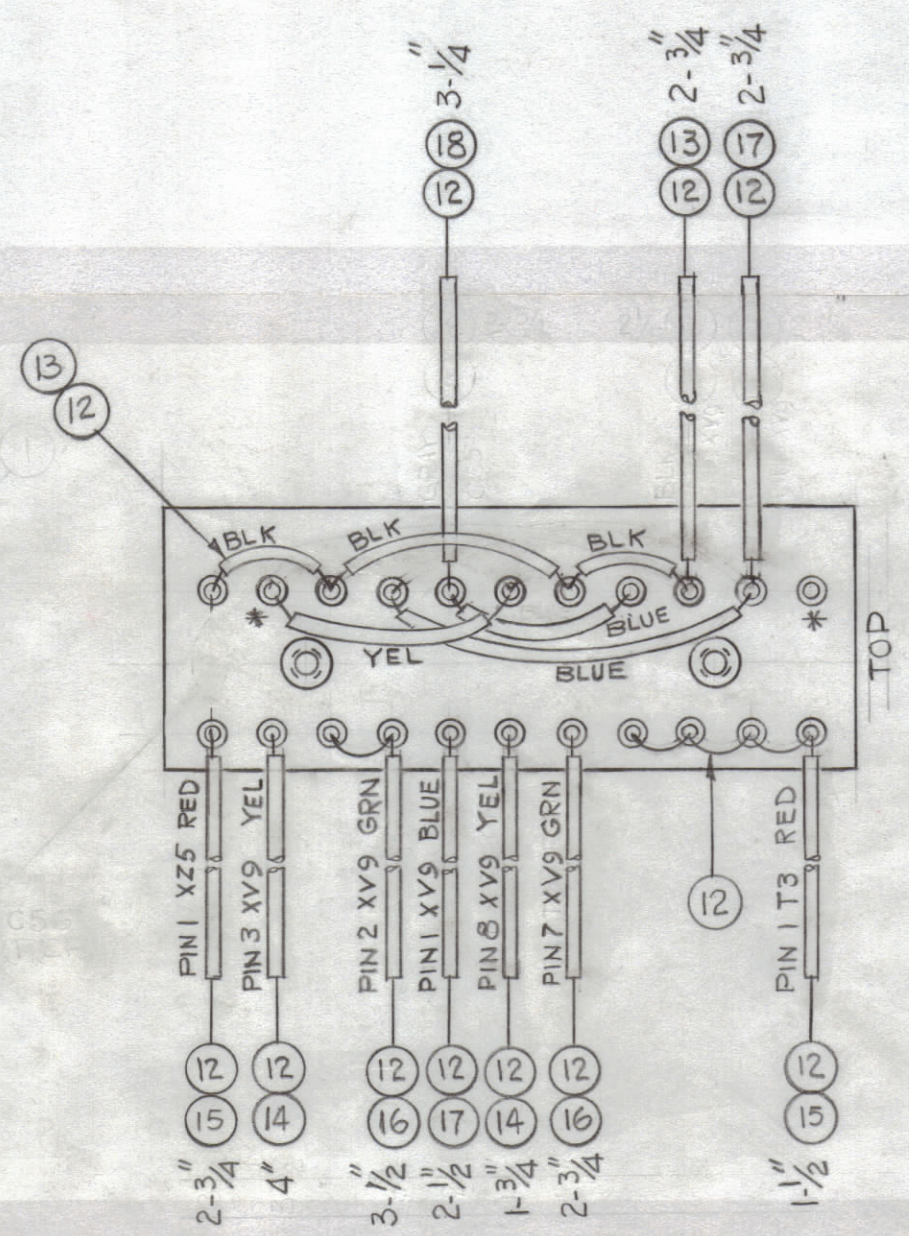
A 3297-2
 MARKING



A 3297-3
 SUB-ASSY



A 3297-4
 FINAL ASSY



2- * DENOTE DO NOT SOLDER
 1- ALL SLEEVING TO BE 1/2" SHORTER THAN WIRE BUSS.

NOTES

1		MSR-9	
QTY./UNIT	MODEL USED ON	ASS'Y. NO.	
SCALE 1:1	CODE A		
THE CONTENTS OF THIS DRAWING ARE THE EXCLUSIVE PROPERTY OF THE TECHNICAL MATERIEL CORP. ITS UNAUTHORIZED USE OR REPRODUCTION IN WHOLE OR IN PART IS STRICTLY FORBIDDEN.			

REQ'D.	ITEM	PART NUMBER	DESCRIPTION	SYMBOL
X	20	BS-100	SOLDER, SOFT	
2	19	CN114R104J	CAP. METALLIC, MYLAR	C54, C56
2-3/4"	18	PX-104-7-034	SLEEVING INSULATION	GRAY
6-3/4"	17	PX-104-6-034		BLUE
4-1/4"	16	PX-104-4-034		GREEN
3-1/4"	15	PX-104-3-034		RED
5-3/4"	14	PX-104-2-034		YELLOW
4-3/4"	13	PX-104-1-034	SLEEVING INSULATION	BLACK
X	12	WL-100-7	WIRE, BUSS BAR	
1	11	CC-100-37	CAPACITOR, FIXED, CERAMIC DISC	C51
1	10	CM100-13	CAPACITOR, FIXED, MICA	C53
1	9	RC20GF104J	RESISTOR, FIXED, COMPOSITION	R67
1	8	RC20GF563J		R62
1	7	RC20GF333J		R66
1	6	RC20GF273J		R64
1	5	RC20GF822J		R65
1	4	RC20GF472J		R68
1	3	RC20GF102J	RESISTOR, FIXED, COMPOSITION	R63
22	2	TE-109-2	SPLIT TERMINAL LUG	
2	1	TE-108-2	STANDOFF RIVET TYPE	

O. POSE		LIST OF MATERIAL	
MATERIAL		THE TECHNICAL MATERIEL CORP. MAMARONECK, NEW YORK	
FINISH		TITLE TERMINAL BOARD ASSEMBLY - 2nd OSC.	
UNLESS OTHERWISE SPECIFIED DIMENSIONS ARE IN INCHES AND INCLUDE CHEMICALLY APPLIED OR PLATED FINISHES		DRAWN G.D.L	DATE 9-26-63
DECIMALS X ± .05 .XX ± .01 .XXX ± .005		CHECKED [Signature]	DATE 12-15-63
FRACTIONS ± 1/64 ANGLES ± 0° 30'		ELECT. DES. [Signature]	DATE
TOLERANCES		MECH. DES. [Signature]	DATE 12-17-63
		FINAL APPROVAL [Signature]	DATE
		A 3297	
		SHEET	
		REV. LTR.	

A 3297
 B