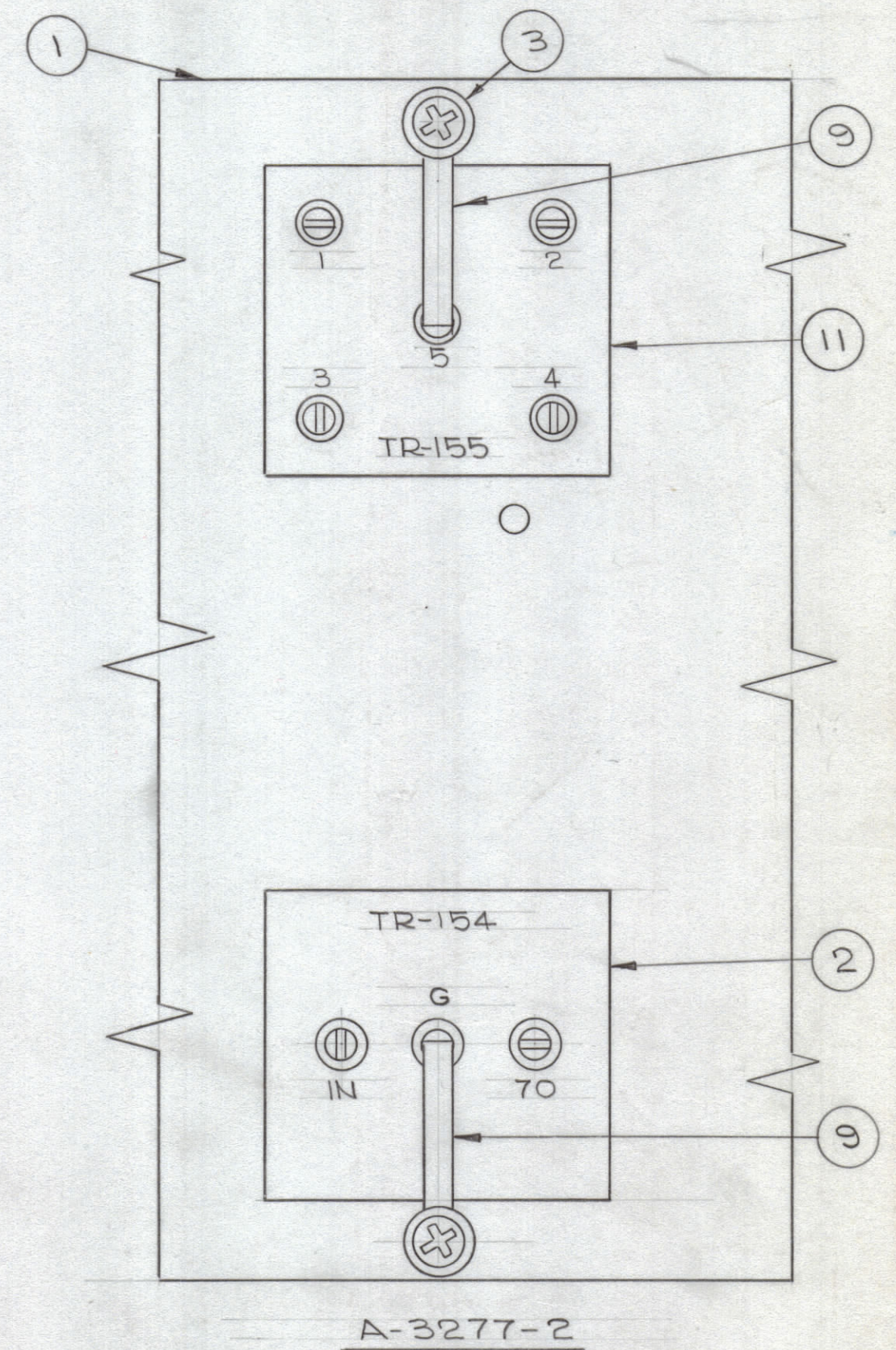
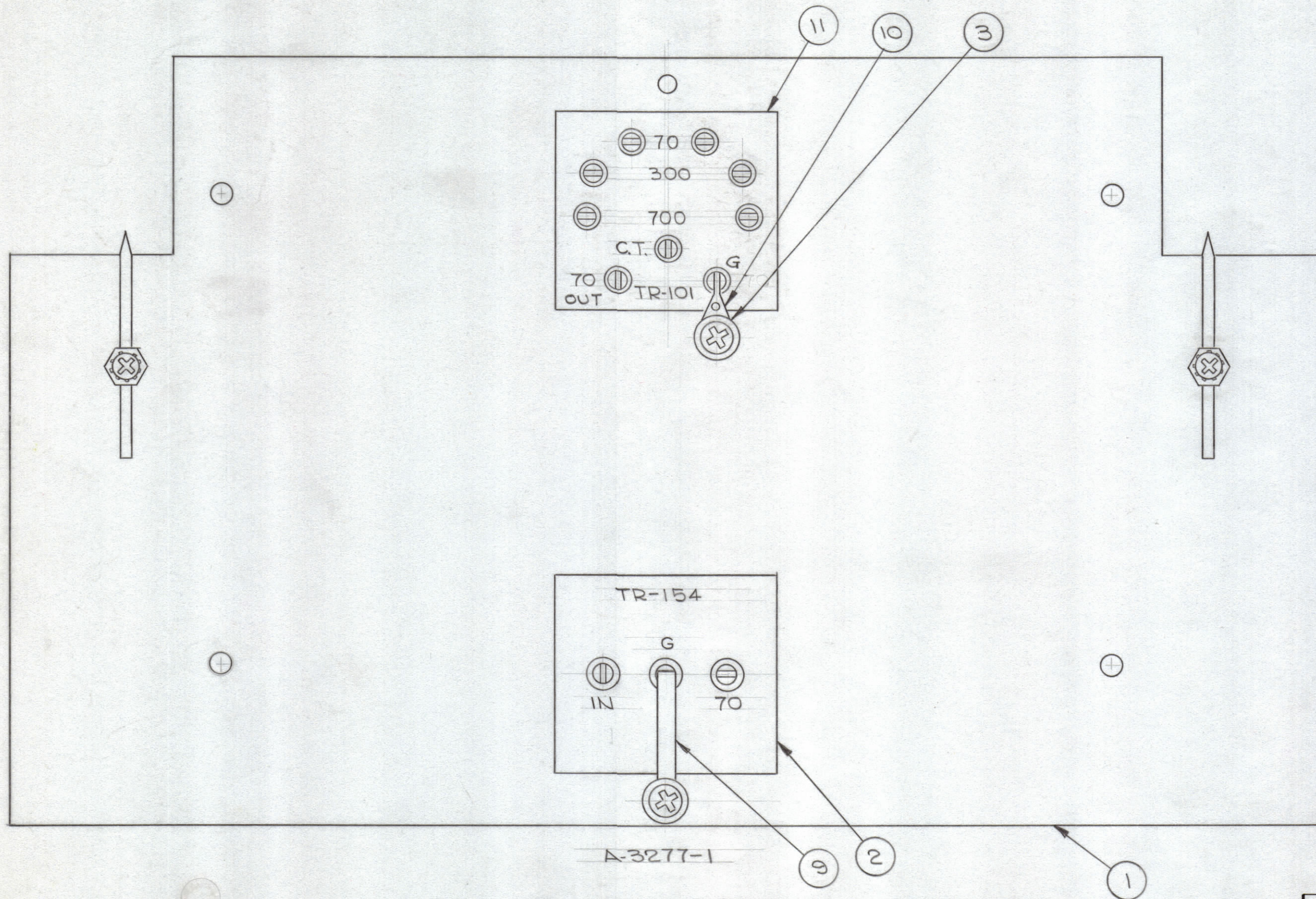
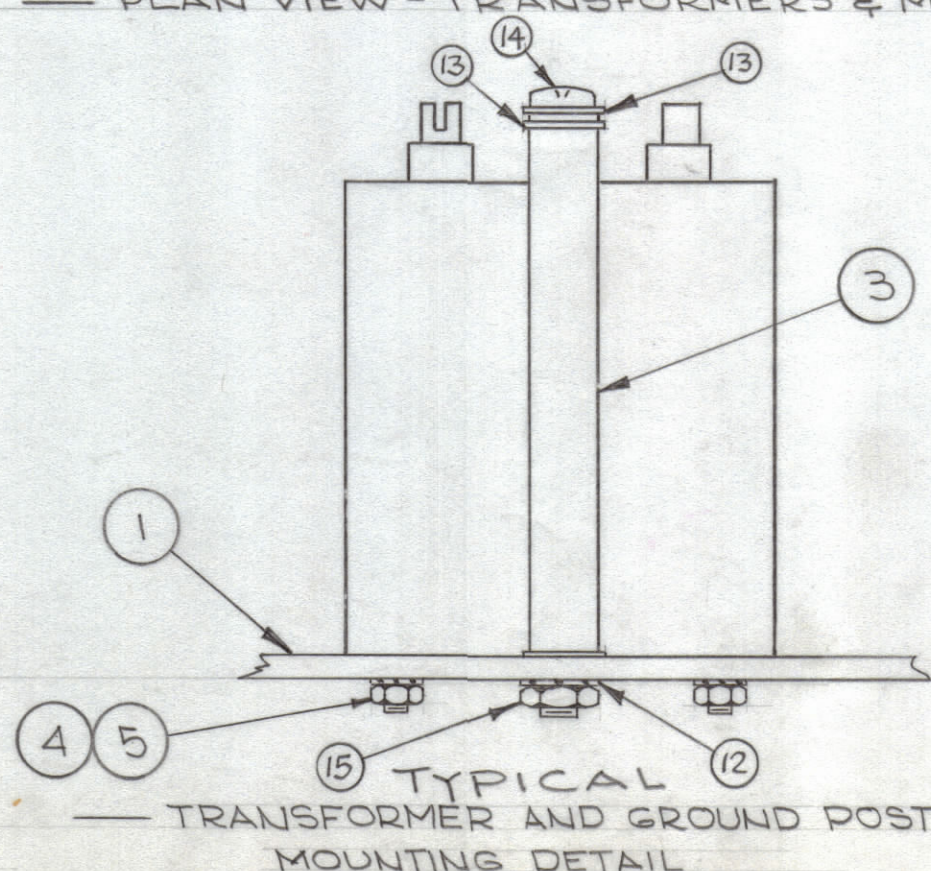
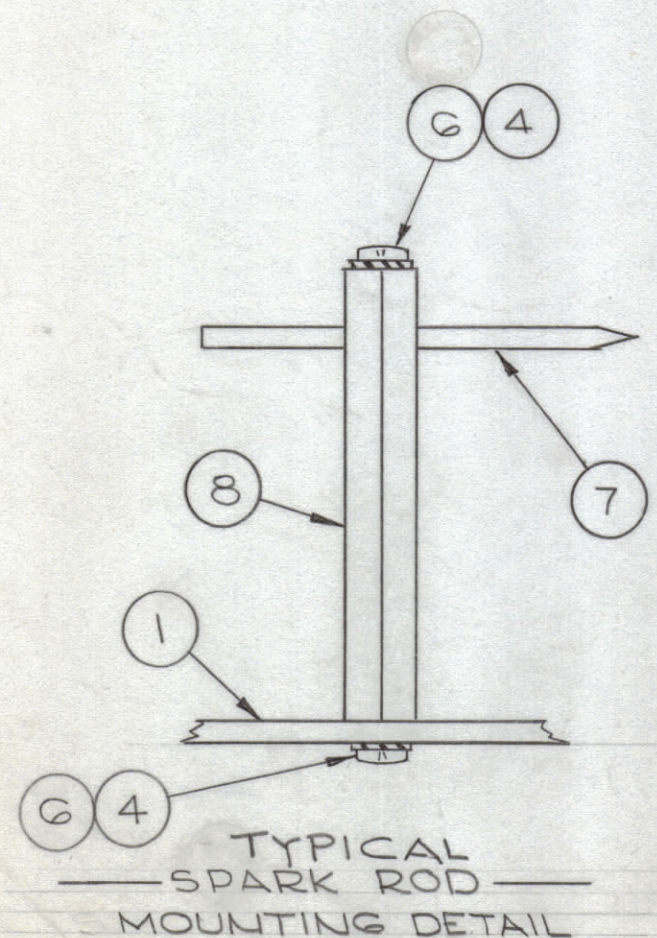


TMC PART No.	ITEM 11	ITEM 9 CABLE	ITEM 9 QTY	ITEM 10	MODEL USED ON
A-3277-1	TR-101	CA-804	1	TE-112-3	HLC-1A
A-3277-2	TR-155	CA-804	2	—	HLC-3

REVISIONS							
ZONE	SYM	DESCRIPTION	DATE	E.M.N. NO.	DRAFT	CHKD	APPD
-	A	IT. 12 THRU 16 ADDED, IT. 3 WAS A-10238 ON PICT. CALLOUTS 12 THRU 15 ADD., DESCR. UPDATED	88.64	12067	JSB	W	MM



— PLAN VIEW - TRANSFORMERS & MOUNTING PLATE —



NOTES

REQ	ITEM	P/N	DESCRIPTION
X	16	BS-100	SOLDER, SOFT
2	15	NTH1032BN12	NUT, HEX
2	14	SCBP0832BN10	SCREW, MACHINE
4	13	FW08HBN	WASHER, FLAT
2	12	LWE10MRN	WASHER, LOCK, EXT.

REQ'D.	ITEM	PART NUMBER	DESCRIPTION	SYMBOL
1	11	SEE CHART	TRANSFORMER, R.F.	
	10	SEE CHART	TERMINAL, LUG	
	9	SEE CHART	LEAD, ELECTRICAL	
2	8	PM-721-3BN 2-375	POST, SPARK ROD	
2	7	PM-103	ROD, SPARK	
4	6	SCBP0632BNG	SCREW, MACHINE	
8	5	NTH0632BN8	NUT, HEX	
12	4	LWEO6MRN	WASHER, LOCK, EXT	
2	3	PM10062	POST, GROUND	
1	2	TR-154	TRANSFORMER, R.F.	
1	1	MS-10378	PLATE, MOUNTING	

I. JOHNSON LIST OF MATERIAL

MATERIAL FINISH TITLE THE TECHNICAL MATERIEL CORP. MAMARONECK, NEW YORK

TRANSFORMER AND MOUNTING PLATE ASSY

UNLESS OTHERWISE SPECIFIED DIMENSIONS ARE IN INCHES AND INCLUDE CHEMICALLY APPLIED OR PLATED FINISHES

DECIMALS: .X ± .05, .XX ± .01, .XXX ± .005
 FRACTIONS: ± 1/64, ± 1/32, ± 1/16, ± 1/8, ± 3/16, ± 1/4, ± 3/8, ± 1/2, ± 5/8, ± 3/4, ± 7/8, ± 1
 TOLERANCES: ANGLES ± 0° 30'

DRAWN: J. Johnson DATE: 8-20-63
 CHECKED: [Signature] DATE: 10/1/63
 ELECT. DES. DATE: 10/1/63
 MECH. DES. DATE: 10/1/63

FINAL APPROVAL: [Signature] DATE: [Blank]
 SHEET: A-3277 REV. LTR. A

Q'TY./UNIT	MODEL USED ON	ASS'Y. NO.
1	HLC-3	A-10240
1	HLC-1A	A-10240

SCALE: # CODE: [Blank]

THE CONTENTS OF THIS DRAWING ARE THE EXCLUSIVE PROPERTY OF THE TECHNICAL MATERIEL CORP. ITS UNAUTHORIZED USE OR REPRODUCTION IN WHOLE OR IN PART IS STRICTLY FORBIDDEN.