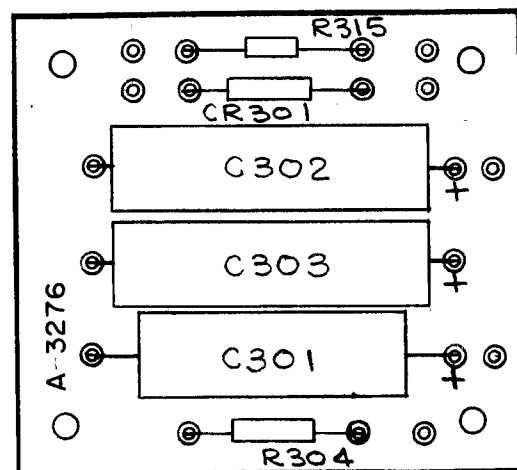


- UNLESS OTHERWISE SPECIFIED -
- 1- ALL LETTERING TO BE 5/64 HIGH BLACK GOTHIC.
 - 2- MARKING PROCESS - AS PER SPEC S-727
 - 3- MARK TMC P/N WITH LATEST REVISION LETTER

MARKING (A 3276-3)



ELECTRICAL ASS'Y (A 3276-4)

1	VLR-1	AX 434
Q'TY./UNIT	MODEL USED ON	ASS'Y. NO.
SCALE 1:1	CODE A	

THE CONTENTS OF THIS DRAWING ARE THE EXCLUSIVE PROPERTY OF THE TECHNICAL MATERIEL CORP. ITS UNAUTHORIZED USE OR REPRODUCTION IN WHOLE OR IN PART IS STRICTLY FORBIDDEN.

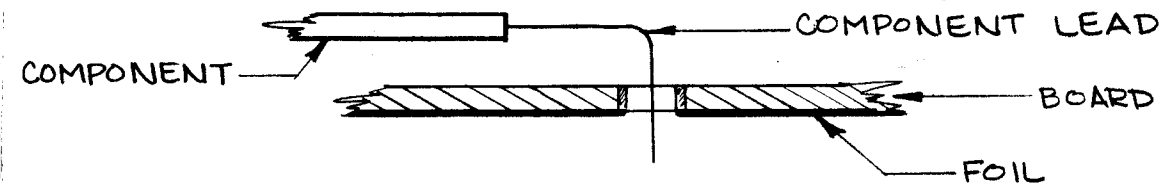
A-3276 A

REVISIONS

SYM	DESCRIPTION	DATE	E.M.N. NO.	DRAFT	CHKD	APPD
X1	LETTERING WAS 3/32; PADS ADDED	9-16-63	1	G.S.		
X2	ITEM (1) WAS RC20GF501J	2/20/64	2	RF	RF	
X3	SEE SHEET 1, REVISION "X3"	3/16/64	3	RF	RF	
0	ORIGINAL RELEASE FOR PRODUCTION	5/12/64	0	A.M.		
A	SUB ASSY (A-3276-4) PICT. DELE, ELEC ASSY. WAS A3276-5 ON MARKING NOTE 3 ADDED.	8.25.64	12197	W.B.		

~ ASSEMBLY NOTICE ~

- 1- TO MOUNT COMPONENTS INSERT LEAD THROUGH PLATED-THRU HOLES & BEND 1/16 OF LEAD OVER COPPER FOIL AS SHOWN.
- 2- APPLY HEAT & SOLDER TO LEAD & FOIL - CAUTION - TOO MUCH HEAT WILL CAUSE THE FOIL TO SEPARATE FROM THE BOARD.
- 3- CLEAN & INSPECT AS PER S-676.
- 4- FUNGUS PROOFING PER TMC SPECIFICATION S113.



REQ'D.	ITEM	PART NUMBER	DESCRIPTION	SYMBOL
X	6	BS 100	SOLDER, SOFT	
1	5	IN34A	DIODE	CR301
2	4	CE 105-200-15	MINIATURE ELECTROLYTIC CAP.	C302, 303
1	3	CE 105-150-15	MINIATURE ELECTROLYTIC CAP.	C301
1	2	RC20GF221J	RESISTOR, FIXED, COMPOSITION	R304
1	1	RC20GF681J	RESISTOR, FIXED, COMPOSITION	R315

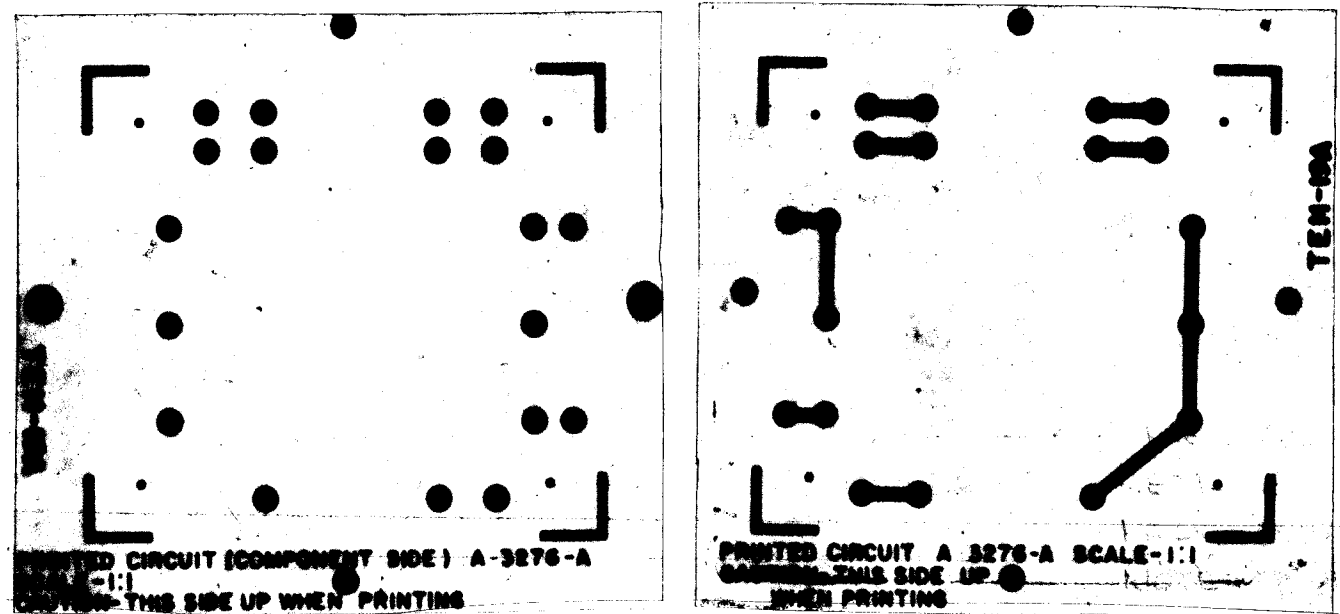
M. GELLMAN

LIST OF MATERIAL

MATERIAL #		THE TECHNICAL MATERIEL CORP. MAMARONECK, NEW YORK			
FINISH #		TITLE PRINTED CIRCUIT BOARD, ASSY. (MAIN CHASSIS)			
UNLESS OTHERWISE SPECIFIED DIMENSIONS ARE IN INCHES AND INCLUDE CHEMICALLY APPLIED OR PLATED FINISHES		DRAWN CHECKED ELECT. DES. MECH. DES. 	DATE 8-10-63 DATE 8-7-64 DATE 5-7-64	FINAL APPROVAL A 3276 SHEET 2 OF 2	DATE REV. LTR. A

NOTES

ORIGINAL ARTWORK TO BE REMOVED FROM PROTECTIVE POCKETS WHEN PHOTOGRAPHING.



A 3276 A

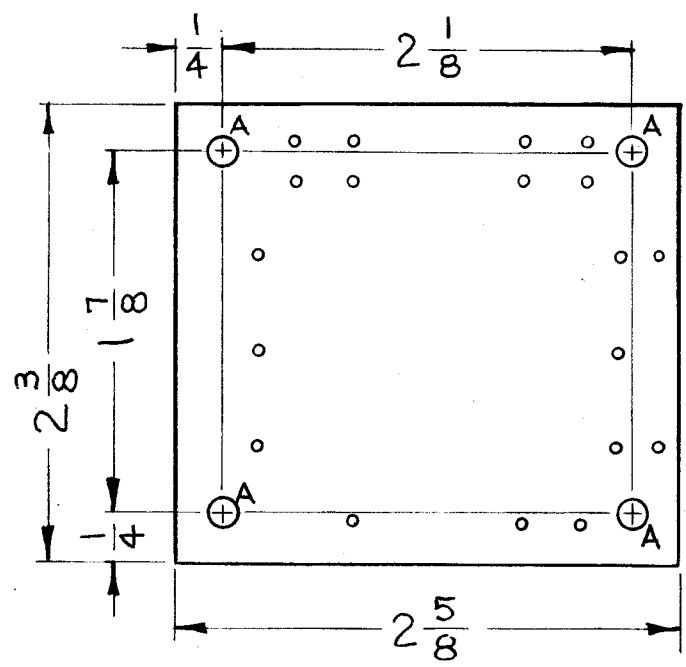
REVISIONS						
SYM	DESCRIPTION	DATE	E.M.N. NO.	DRAFT	CHKD	APPD
X1	COMPLETELY REDRAWN	9-16-63	1	G.S.		
X2	SEE SHEET 2 OF 2, REVISION "X 2"	2/20/64	2	EG	PAV.	
X3	(1) UNMARKED HOLE RELOCATED	3/16/64	3	cel	PAV.	
0	ORIGINAL RELEASE FOR PRODUCTION	5/12/64	0	A.M.	@	
A	SEE SHEET 2 OF 2 REV "A"	8.25.64	12197	HB		

HOLE & PAD SPECIFICATIONS			
HOLE	DIA.	PAD DIA.	REQ
UNMARKED	.050	.130	19
A	.136		4

NOTES: TO BE MANUFACTURED IN ACCORDANCE WITH TMC SPEC. S-735, UNLESS OTHERWISE SPECIFIED.

- MATERIAL - G-10 EPOXY GLASS LAMINATE 3/32 THICK, 2 OUNCE COPPER CLAD BOTH SIDES.
- ALL BOARDS WILL BE DOUBLE-SIDED. WHENEVER A PAD APPEARS ON THE PRINTED CIRCUIT SIDE, A SIMILAR SIZE AND SHAPE SHALL APPEAR ON THE COMPONENT SIDE IN EXACT REGISTER. (EXCEPT WHERE AN EXCEPTION IS NOTED.)
- (A) ALL HOLES EXCEPT "A" MTG. HOLES ARE TO BE PLATED-THRU WITH A MINIMUM COPPER PLATING THICKNESS OF .001.
(B) PLATE .0003 TO .0005 NICKEL & 25 MILLIONTHS MINIMUM OF GOLD ALL ETCHED SURFACES & PLATED-THRU HOLES.
- CONDUCTOR WIDTH: .046 MIN., .062 MAX. SPACE BETWEEN CONDUCTORS .031 MIN.

ETCHING, PRINTED CIRCUIT (A 3276-1)



MACHINING (A 3276-2)
DO NOT SCALE WORK TO DIMENSIONS

ORIGINAL ARTWORK TO BE SUPPLIED BY TMC FOR PHOTOGRAPHING (SCALE - 1:1)

1	VLR-1	AX 434
Q'TY./UNIT	MODEL USED ON	ASS'Y. NO.
SCALE 1:1	CODE A	

REQ'D.	ITEM	PART NUMBER	DESCRIPTION	SYMBOL
M. GELLMAN LIST OF MATERIAL				
MATERIAL		THE TECHNICAL MATERIEL CORP. MAMARONECK, NEW YORK		
FINISH		TITLE PRINTED CIRCUIT BOARD, ASSY. (MAIN CHASSIS)		
UNLESS OTHERWISE SPECIFIED DIMENSIONS ARE IN INCHES AND INCLUDE CHEMICALLY APPLIED OR PLATED FINISHES		DRAWN G. Sener	DATE 9-16-63	FINAL APPROVAL PAV.
		CHECKED @	DATE 5-7-64	
DECIMALS .X ± .05 .XX ± .01 .XXX ± .005		FRACTIONS ± 1/64 ANGLES ± 0° 30'		
TOLERANCES		DATE 5-7-64		
		SHEET 1 OF 2		
		A 3276		A
				REV. LTR.

NOTES

THE CONTENTS OF THIS DRAWING ARE THE EXCLUSIVE PROPERTY OF THE TECHNICAL MATERIEL CORP. ITS UNAUTHORIZED USE OR REPRODUCTION IN WHOLE OR IN PART IS STRICTLY FORBIDDEN.