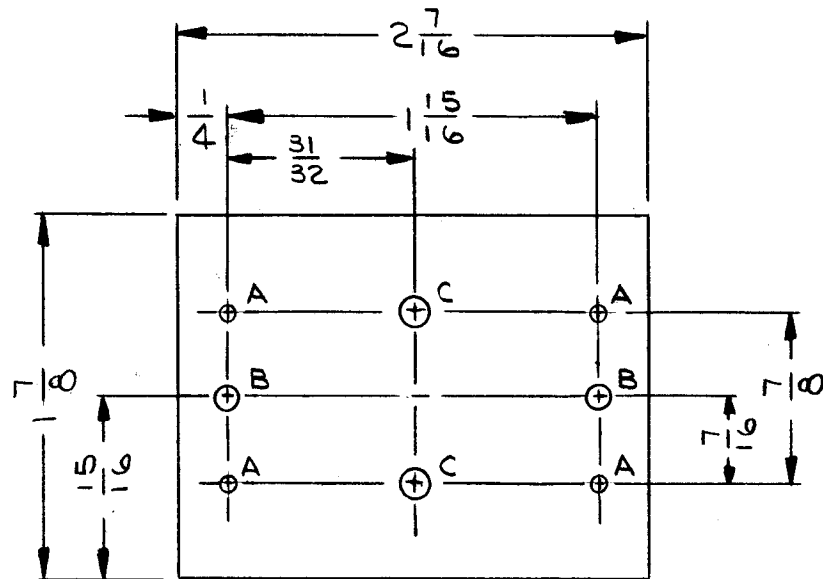


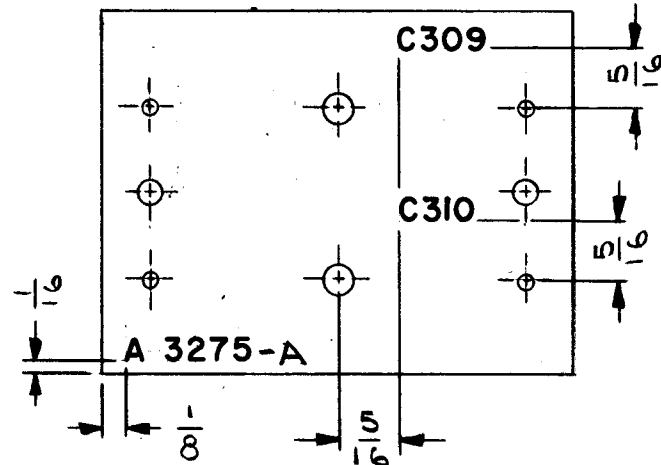
HOLE LEGEND		
HOLE	DESCRIPTION	QTY
A	.078 DIA	4
B	9/64 DIA	2
C	11/64 DIA	2



MATERIAL:-
G-10 EPOXY GLASS LAMINATE, 3/32 THICK

STAGE 1 - MACHINING (A 3275-1)

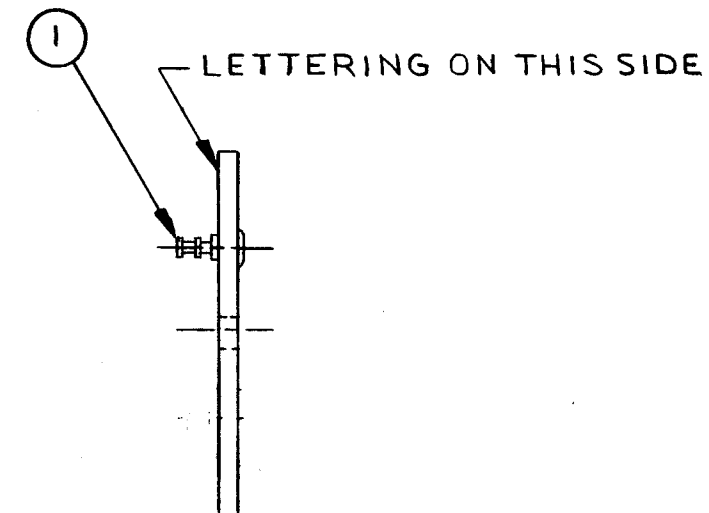
- UNLESS OTHERWISE SPECIFIED -
- 1- ALL LETTERING TO BE 1/8 HIGH BLACK GOTHIC.
 - 2- MARKING PROCESS: USE TMC SPECIFICATION S-727.
 - 3- ALL LETTERING TO BE LOCATED APPROX. AS SHOWN.



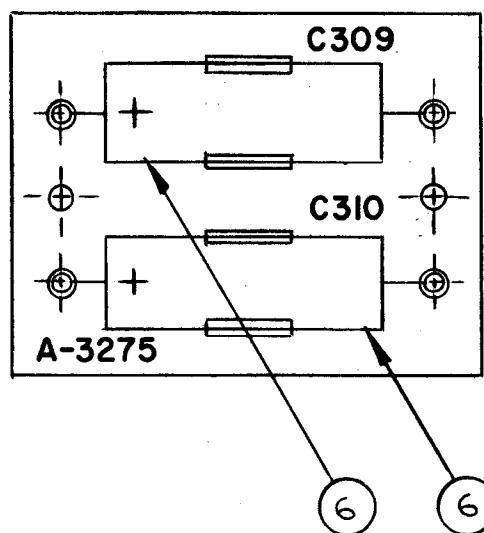
STAGE 2 - LETTERING (A 3275-2)

A 3275 B

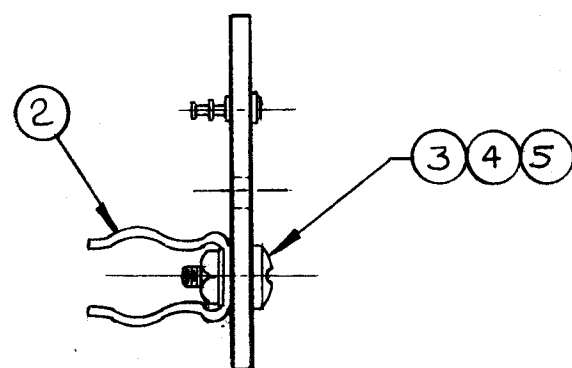
REVISIONS						
SYM	DESCRIPTION	DATE	E.M.N. NO.	DRAFT	CHKD	APPD
0	ORIGINAL RELEASE FOR PRODUCTION	5-12-64	0	A.M.	@	
A	IT. 3 WAS SCBP0632 BNP, IT. 6 WAS CE116-6-C-W IT. 2, 3, 4, 5 PICT. RELOCATED TO FINAL ASSY.	8-25-64	12197	WJB	HA	
B	IT. 3 WAS SCBP0632BN9; IT. 4 WAS LW06MRN; IT. 5 WAS NTH0632N10.	2-15-65	13478	WJB	WJB	



STAGE 3 - SUB-ASSEMBLY (A-3275-3)



STAGE 4 - FINAL ASSEMBLY (A 3275-4)



REQ'D.	ITEM	PART NUMBER	DESCRIPTION	SYMBOL
X	7	BS 100	SOLDER, SOFT	
2	6	CE 116-6-V-N	CAPACITOR, FIXED, ELECTR. POLARIZED	C309 C310
2	5	NTH0632 N8	NUT, HEX.	C
2	4	LWE 06 MRN	LOCKWASHER, EXTERNAL TOOTH	C
2	3	SCBP0632 BN 5	SCREW, MACHINE	C
2	2	FC 101	CLIP, FUSE	C
4	1	TE 127-5	TERMINAL STUD	A

M. GELLMAN LIST OF MATERIAL

MATERIAL: SEE STAGE 1
FINISH: NONE
THE TECHNICAL MATERIEL CORP.
MAMARONECK, NEW YORK

TITLE: TERMINAL BOARD ASSEMBLY

UNLESS OTHERWISE SPECIFIED DIMENSIONS ARE IN INCHES AND INCLUDE CHEMICALLY APPLIED OR PLATED FINISHES		DRAWN	DATE	FINAL APPROVAL		DATE
DECIMALS X ± .05 .XX ± .01 .XXX ± .005		J. LESHINSKI	8/15/63	[Signature]		
FRACTIONS ± 1/64 ANGLES ± 0° 30'		[Signature]	5-7-64	[Signature]		
TOLERANCES		ELECT. DES.	DATE	A 3275		B
		MECH/DES.	DATE	SHEET		REV. LTR.

NOTES

THE CONTENTS OF THIS DRAWING ARE THE EXCLUSIVE PROPERTY OF THE TECHNICAL MATERIEL CORP. ITS UNAUTHORIZED USE OR REPRODUCTION IN WHOLE OR IN PART IS STRICTLY FORBIDDEN.

1	VLR-1	AX-434
Q'TY./UNIT	MODEL USED ON	ASS'Y. NO.
SCALE: 1:1	CODE: A	