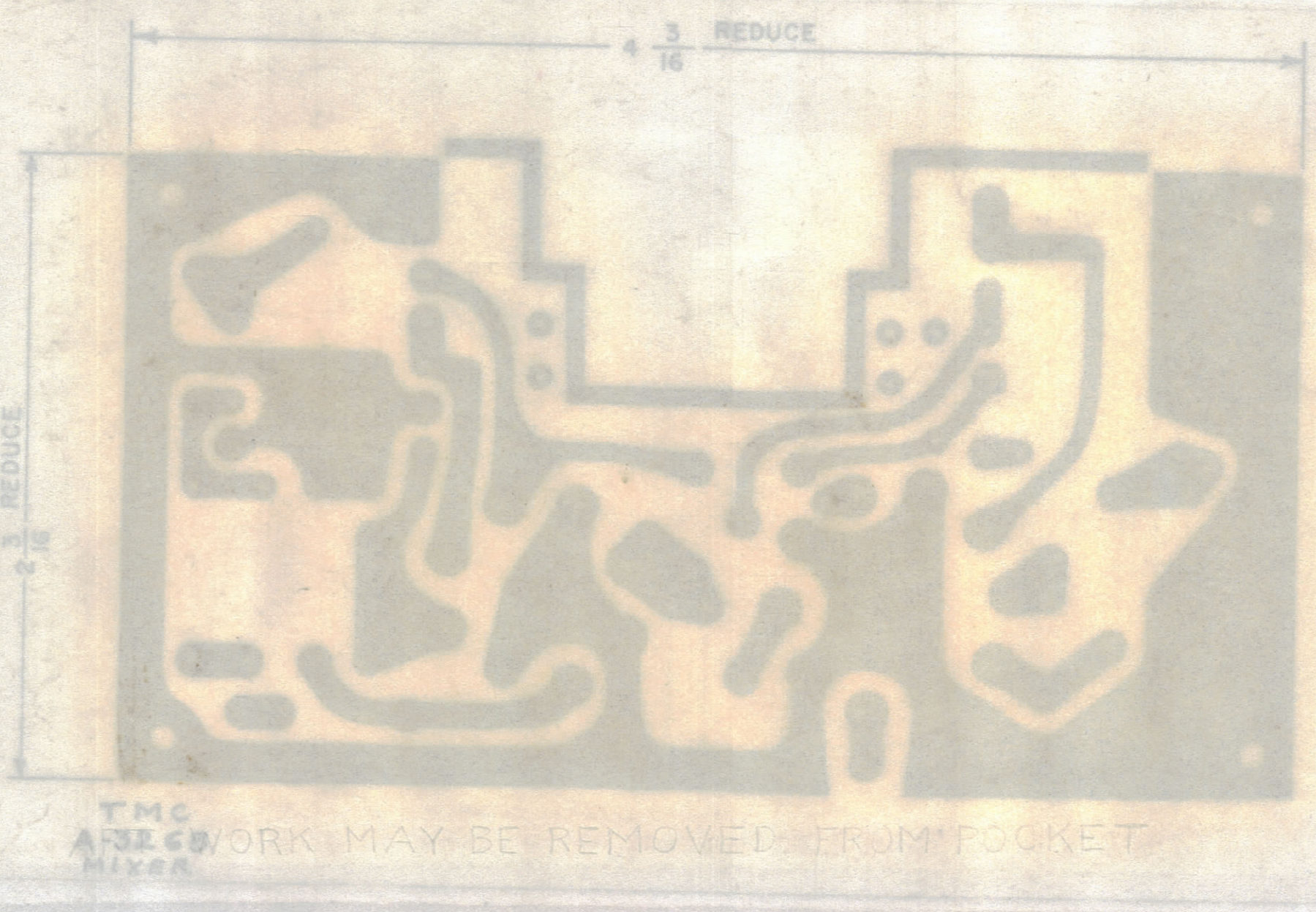


ZONE		SYM	DESCRIPTION	DATE	E.M.N. NO.	DRAFT	CHKD	APPD.
A			SEE SHEET 2 OF 2 FOR REVISION	4/23/64	11276	A.M.	@	<i>[Signature]</i>
G			ALL WORK NOTES ADDED TO SHEET 2 OF 2					
G			UNMARKED HOLES IN REAR WAS 50	10/7/63		JL		

← ORIGINAL ARTWORK TO BE REMOVED FROM PROTECTIVE POCKET, WHEN PHOTOGRAPHING. NOTE POCKET ON REAR.

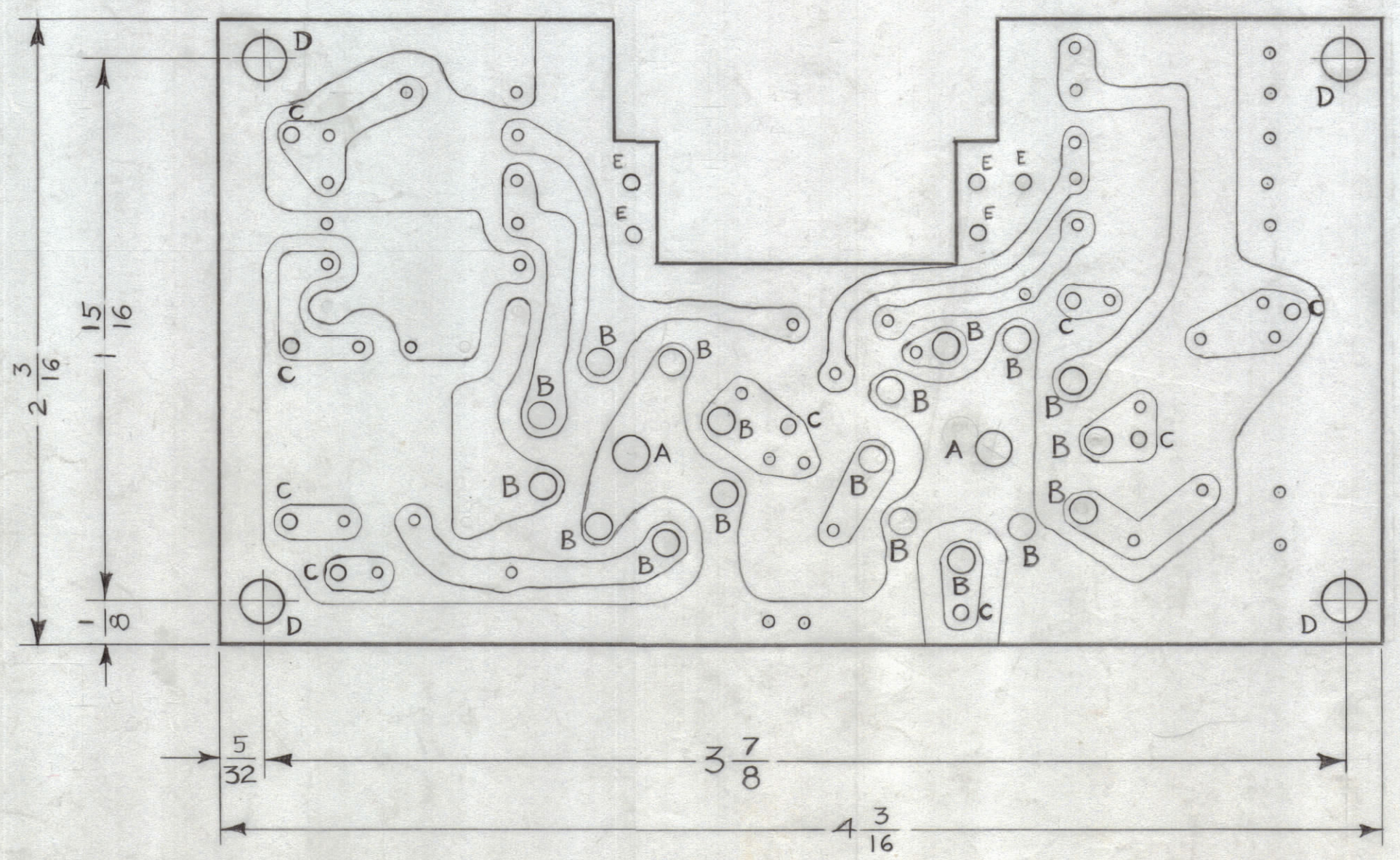
HOLE LEGEND		
HOLE	DESCRIPTION	REQD
A	3/16 DIA	2
B	3/32 DIA	18
C	.078 DIA	9
D	5/32 DIA	4
UNMARKED	.050 DIA	46
E	.072 DIA	5



TMC WORK MAY BE REMOVED FROM POCKET

NOTES:

- HOLES ARE TO BE PLATED THRU & HAVE A MINIMUM COPPER THICKNESS OF .0015 AT ANY POINT WITHIN THE HOLE. THE SOLDER PLATE THICKNESS MUST BE A MINIMUM OF .0008 AS PER TMC SPEC S-735. THE FINISHED DIA OF THE PLATED HOLE MUST BE A MINIMUM OF THE DESIGNATED HOLE DIA.
- MATERIAL- EPOXY G-10 GLASS LAMINATE, 1/16 THK, .002 COPPER CLAD, ONE SIDE.
- FINISH - NATURAL ~ SEMI-GLOSS.



— A-3268-1 MACHINING —  
DO NOT SCALE, WORK TO DIMENSIONS

ORIGINAL ARTWORK TO BE SUPPLIED BY TMC FOR PHOTOGRAPHING (SCALE 2:1)

REQ'D.	ITEM	PART NUMBER	DESCRIPTION	SYMBOL
M. GELLMAN LIST OF MATERIAL				
MATERIAL			THE TECHNICAL MATERIEL CORP.	
SEE NOTE # 2			MAMARONECK, NEW YORK	
FINISH			TITLE	
SEE NOTE # 3			PRINTED CIRCUIT BOARD ASSY.	
DRAWN		DATE	FINAL APPROVAL	
<i>[Signature]</i>		8-5-63	<i>[Signature]</i>	
CHECKED		DATE	DATE	
<i>[Signature]</i>		10/11/63		
ELECT. DES.		DATE	A-3268	
<i>[Signature]</i>			A	
MECH. DES.		DATE	SHEET 1 OF 2	
<i>[Signature]</i>			REV. LTR.	

QTY./UNIT	MODEL USED ON	ASS'Y. NO.
1	GPR-92	
SCALE	CODE	
2:1		

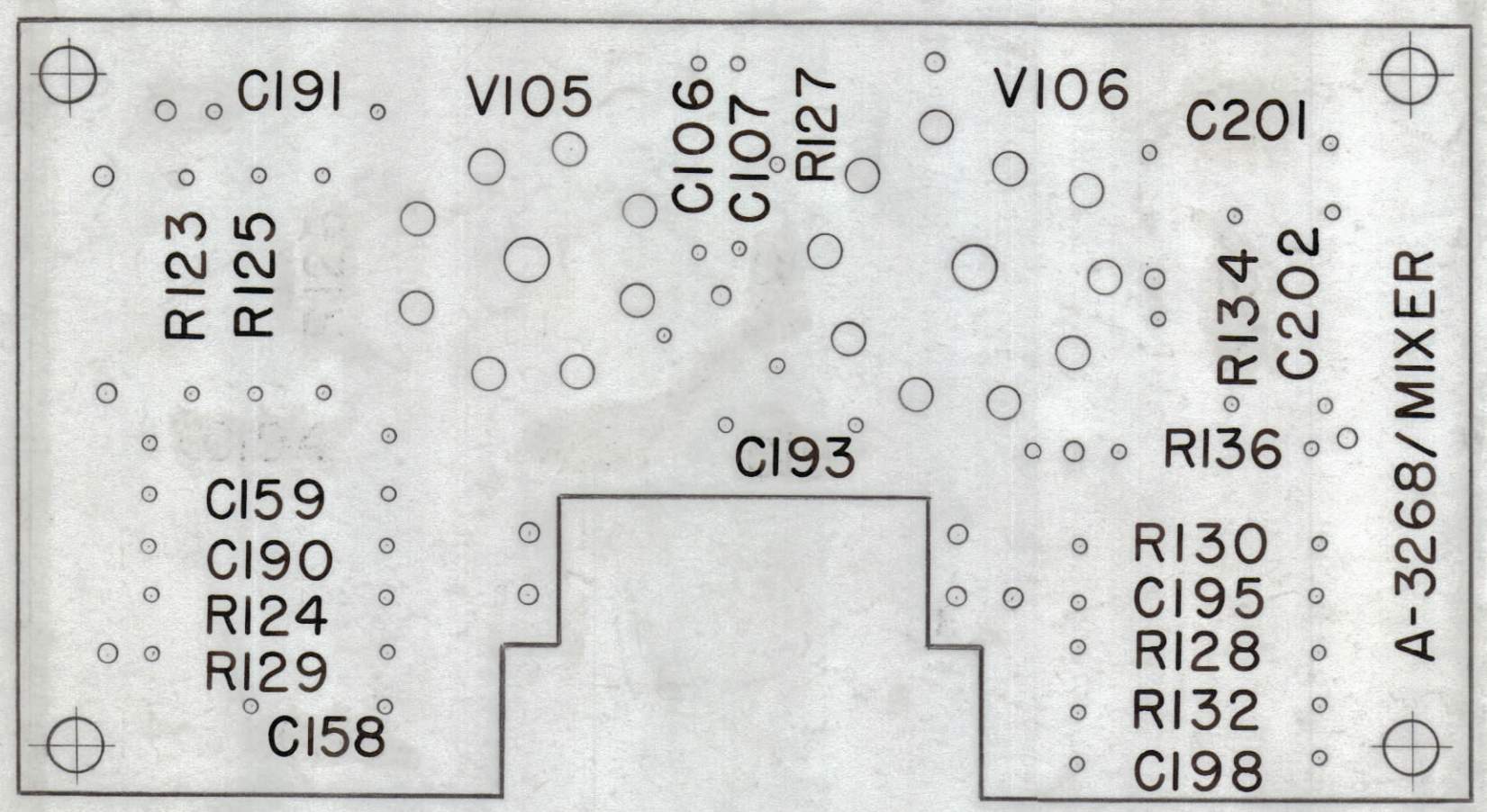
NOTES

THE CONTENTS OF THIS DRAWING ARE THE EXCLUSIVE PROPERTY OF THE TECHNICAL MATERIEL CORP. ITS UNAUTHORIZED USE OR REPRODUCTION IN WHOLE OR IN PART IS STRICTLY FORBIDDEN.

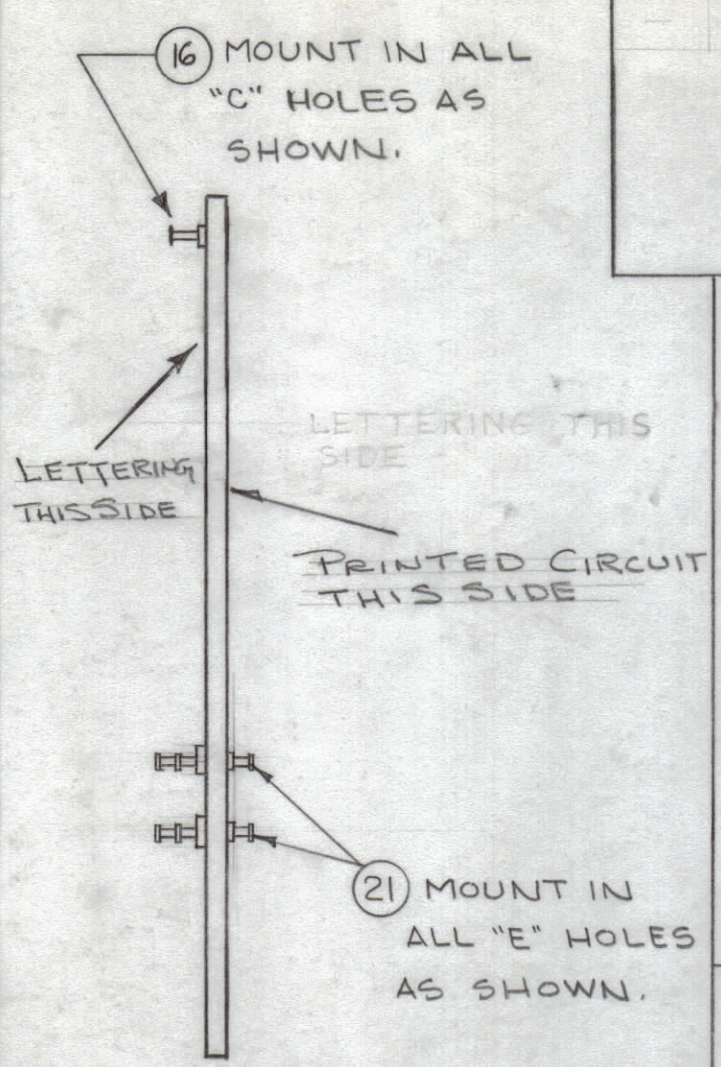
UNLESS OTHERWISE SPECIFIED DIMENSIONS ARE IN INCHES AND INCLUDE CHEMICALLY APPLIED OR PLATED FINISHES

DECIMALS: .X ± .05, .XX ± .01, .XXX ± .005  
FRACTIONS: ± 1/64  
ANGLES: ± 0° 30'

-UNLESS OTHERWISE SPECIFIED-  
 MARKING PROCESS: AS PER TMC SPECIFICATION S-727.  
 LETTERING: 1/8 HIGH BLACK GOTHIC, LOCATED AS SHOWN.



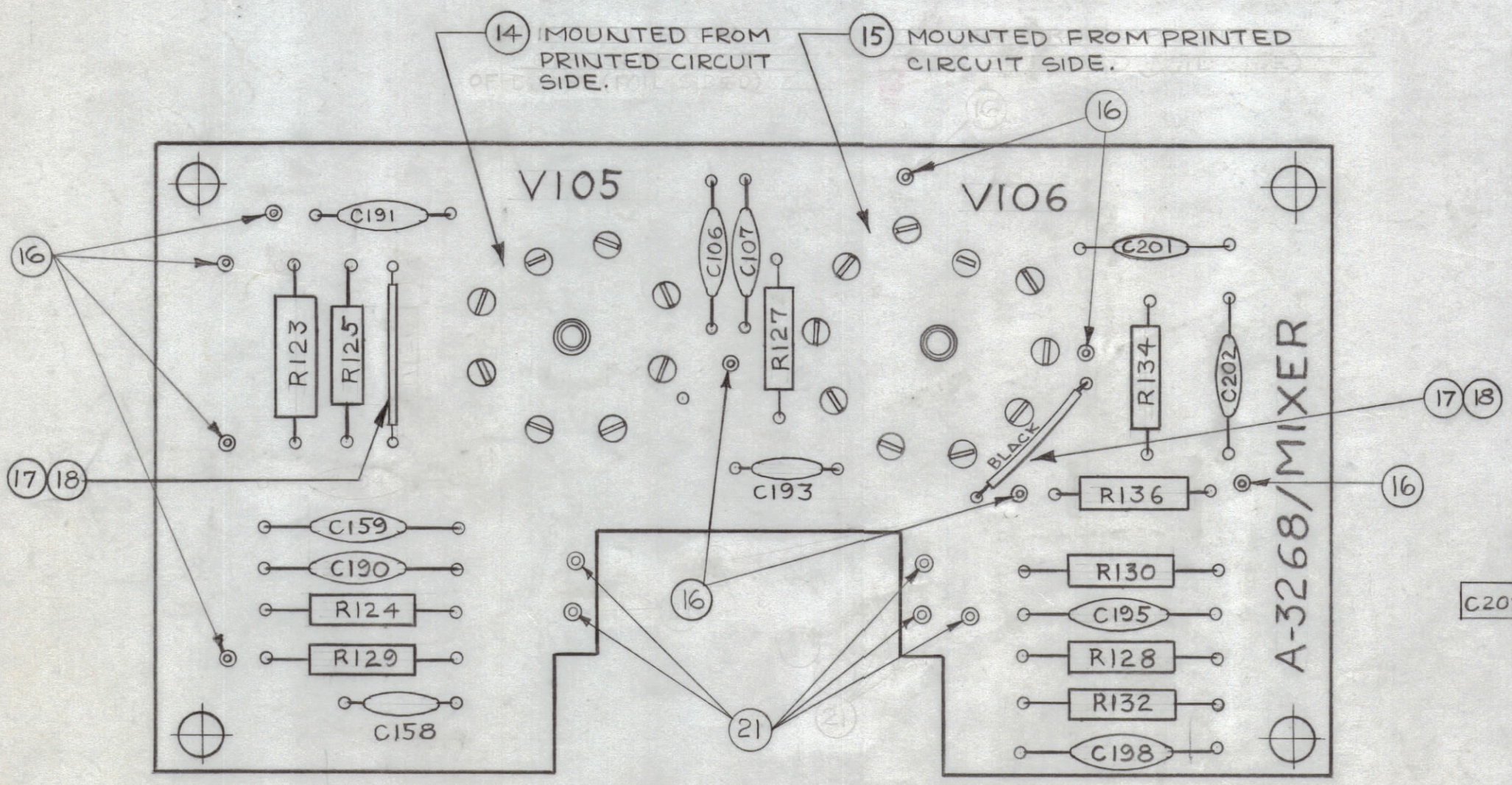
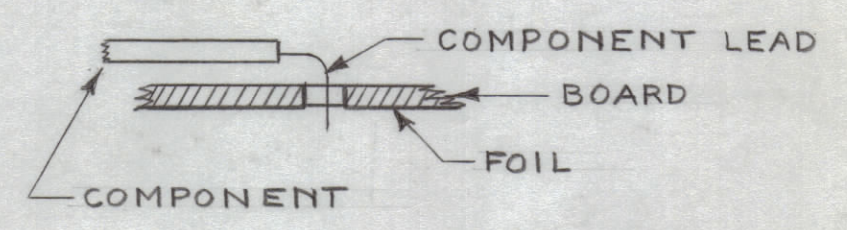
LETTERING (A-3268-2)



SUB-ASSY (A-3268-3)

REVISIONS						
ZONE	SYM	DESCRIPTION	DATE	E.M.N. NO.	DRAFT	CHKD
C6	A	ADDED ITEM 17&18 ON PICTORIAL	4/23/64	11276	A.M.	

ASSEMBLY NOTICE  
 1- TO MOUNT COMPONENTS INSERT LEAD THROUGH PLATED-THRU HOLES & BEND ABOUT 1/16 OF LEAD OVER FOIL AS SHOWN.  
 2- APPLY HEAT & SOLDER TO LEAD & FOIL-CAUTION-TOO MUCH HEAT WILL CAUSE THE FOIL TO SEPARATE FROM THE BOARD.  
 3-CLEAN & INSPECT AS PER S-676.



ELECTRICAL ASSY  
 (A-3268-4)

REQ'D.	ITEM	PART NUMBER	DESCRIPTION	SYMBOL
5	21	TE-168-4C	TERMINAL, MINATURE	E
1	20	RC20GF104K	RESISTOR, FIXED, COMPOSITION	
-	19	BS-100	SOLDER, SOFT	
-	18	PX-104-1-.034	INSULATION, SLEEVING	BLK
-	17	WL-100-6	WIRE, ELECTRICAL	
9	16	TE-127-2	TERMINAL, STUD	C
1	15	TS-161-1	SOCKET, TUBE	V106
1	14	TS-160-1	SOCKET, TUBE	V105
1	13	RC32GF821K	RESISTOR, FIXED, COMPOSITION	R123
1	12	RC20GF273K		R130
1	11	224K		R128
1	10	101J		R132
1	9	223K		R124
1	8	222K		R129
1	7	681K		R134
1	6	470K		R125
1	5	RC20GF471K	RESISTOR, FIXED, COMPOSITION	R136
6	4	CC-100-16	CAPACITOR, FIXED, CERAMIC, DISC	
1	3	-9		C190
3	2	-15		
1	1	CC-100-24	CAPACITOR, FIXED, CERAMIC, DISC.	C106

M. GELLMAN LIST OF MATERIAL				
MATERIAL	THE TECHNICAL MATERIEL CORP. MAMARONECK, NEW YORK			
FINISH	TITLE PRINTED CIRCUIT BOARD ASSY.			
UNLESS OTHERWISE SPECIFIED DIMENSIONS ARE IN INCHES AND INCLUDE CHEMICALLY APPLIED OR PLATED FINISHES	DRAWN	DATE	FINAL APPROVAL	DATE
DECIMALS .X ± .05 .XX ± .01 .XXX ± .005	8/12/63	10/11/63		
FRACTIONS ± 1/64 ANGLES ± 0° 30'	ELECT. DES.	DATE	A-3268	
TOLERANCES	MECH. DES.	DATE	SHEET 2 OF 2	

1	GPR-92	ASSY. NO.
Q'TY/UNIT	MODEL USED ON	
SCALE 2:1	CODE	

NOTES  
 THE CONTENTS OF THIS DRAWING ARE THE EXCLUSIVE PROPERTY OF THE TECHNICAL MATERIEL CORP. ITS UNAUTHORIZED USE OR REPRODUCTION IN WHOLE OR IN PART IS STRICTLY FORBIDDEN.