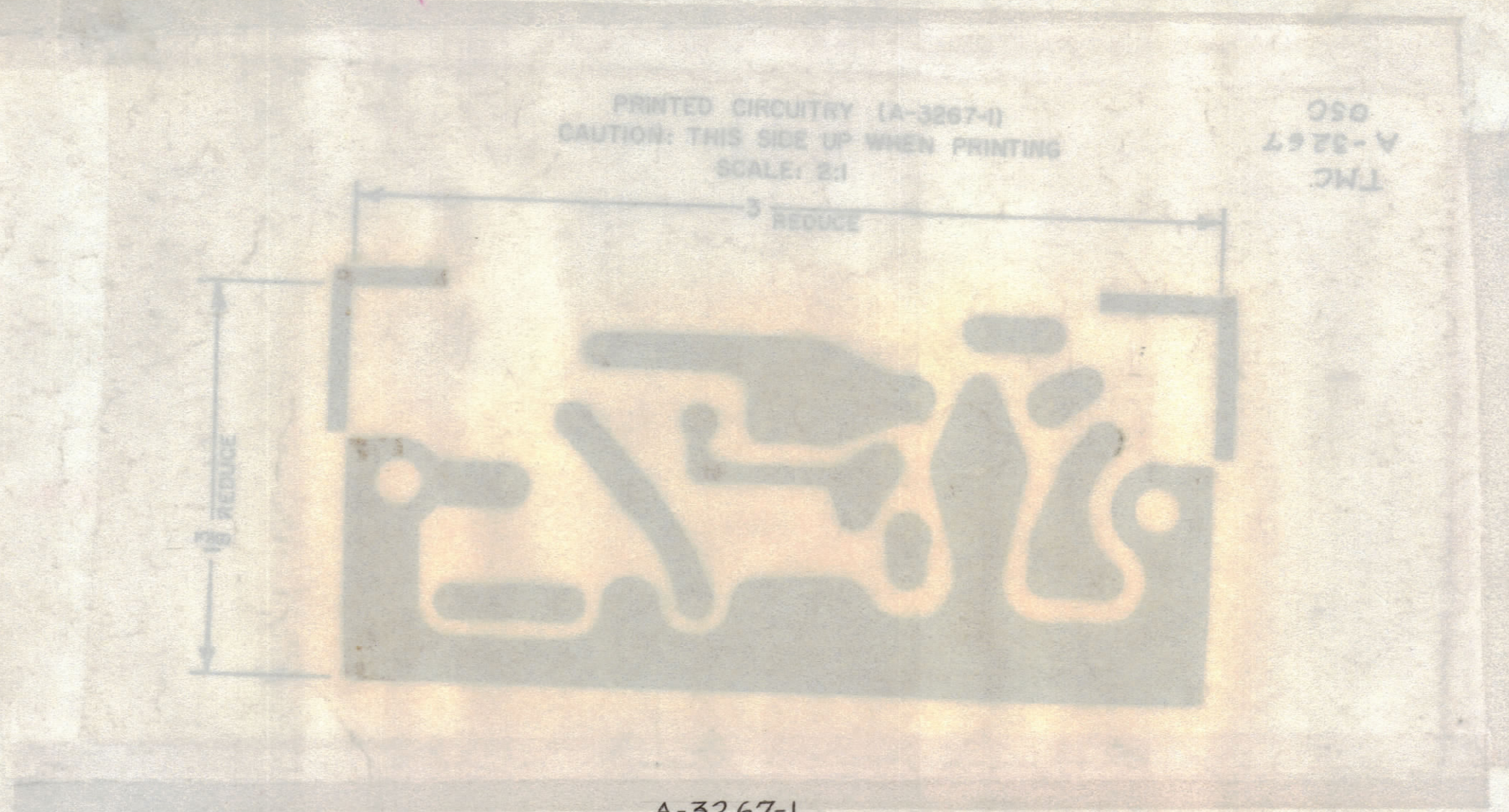


ZONE		SYM	DESCRIPTION	DATE	E.M.N. NO.	DRAFT	CHKD	APPD
C6, F2		A	1" B HOLE ADD. ON MACHINING, ON HOLE LEG. REQ B WBS	5.8.64	11372	WB		

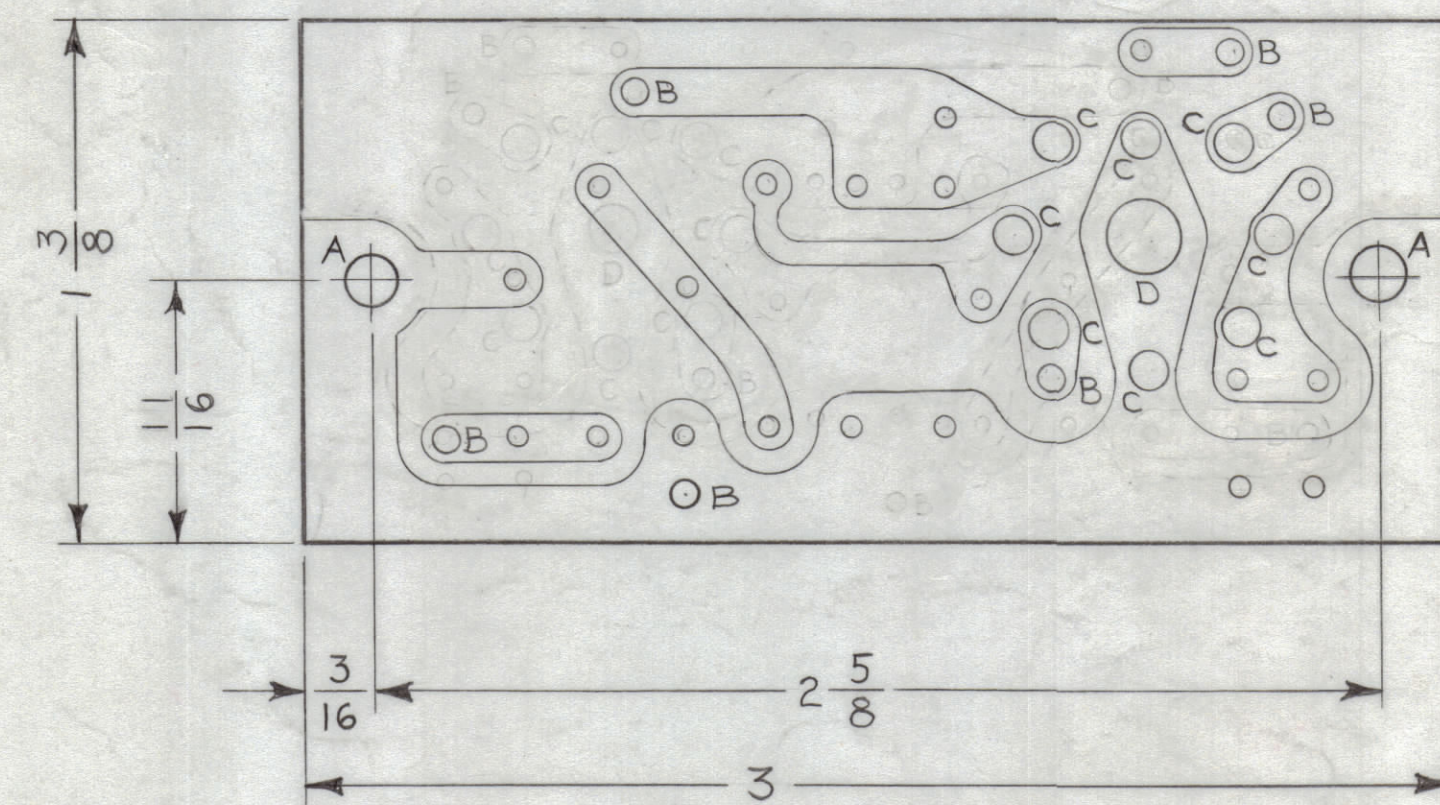


A-3267-1
PRINTED CIRCUITRY
ORIGINAL ARTWORK TO BE REMOVED FROM
PROTECTIVE POCKET WHEN PHOTOGRAPHING

HOLE LEGEND		
HOLE	DESCRIPTION	REQD
A	5/32 DIA	2
B	.078 DIA	6
C	3/32 DIA	8
D	3/16 DIA	1
UN-MARKED	.050 DIA	20

NOTES:

1. HOLES ARE TO BE PLATED THRU & HAVE A MINIMUM COPPER THICKNESS OF .0015 AT ANY POINT WITHIN THE HOLE. THE SOLDER PLATE THICKNESS MUST BE A MINIMUM OF .0008 AS PER TMC SPEC S-735. THE FINISHED DIA. OF THE PLATED HOLE MUST BE A MINIMUM OF THE DESIGNATED HOLE DIA.



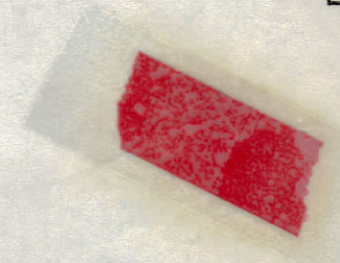
A-3267-2
MACHINING
(BOTTOM VIEW SHOWN)

THE ORIGINAL ARTWORK TO BE SUPPLIED BY TMC FOR PHOTOGRAPHING.

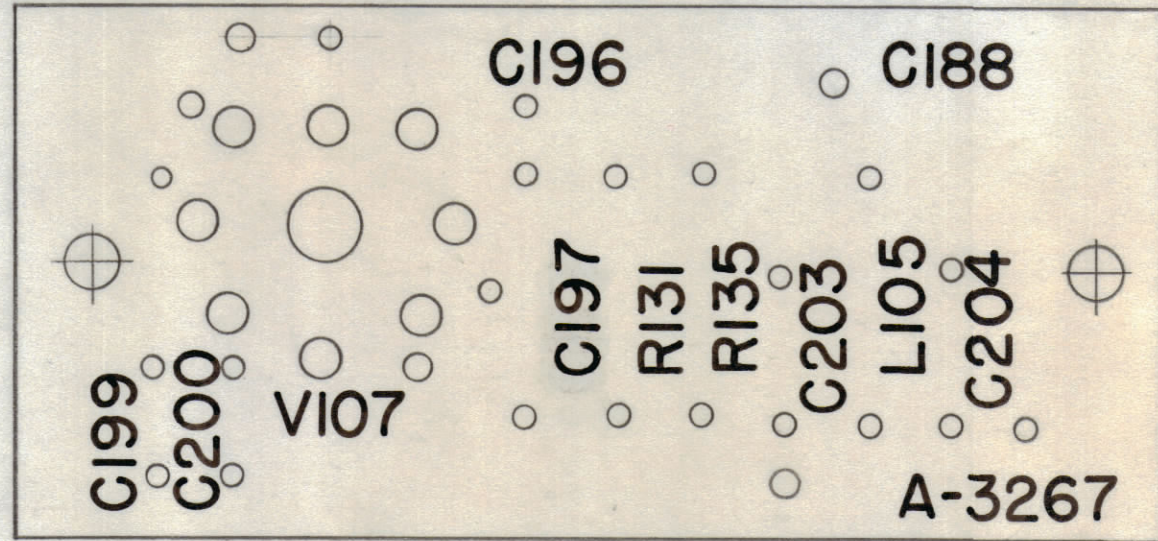
REQ'D.	ITEM	PART NUMBER	DESCRIPTION	SYMBOL
M. GELLMAN LIST OF MATERIAL				
MATERIAL EPOXY G-10 1/16 THK 2 OZ. COPPER CLAD, ONE SIDE			THE TECHNICAL MATERIEL CORP. MAMARONECK, NEW YORK	
FINISH NATURAL~SEMI-GLOSS			TITLE PRINTED CIRCUIT BOARD, ASSY (BOTTOM VIEW SHOWN)	
UNLESS OTHERWISE SPECIFIED DIMENSIONS ARE IN INCHES AND INCLUDE CHEMICALLY APPLIED OR PLATED FINISHES			DRAWN <i>M. Gellman</i>	DATE 8-5-63
DECIMALS .X ± .05 .XX ± .01 .XXX ± .005			CHECKED <i>H. G.</i>	DATE 11/5/63
FRACTIONS ± 1/64 ANGLES ± 0° 30'			ELECT. DES. <i>MC</i>	DATE 11-7-63
TOLERANCES			MECH. DES. <i>MP</i>	DATE 11-7-63
THE CONTENTS OF THIS DRAWING ARE THE EXCLUSIVE PROPERTY OF THE TECHNICAL MATERIEL CORP. ITS UNAUTHORIZED USE OR REPRODUCTION IN WHOLE OR IN PART IS STRICTLY FORBIDDEN.			FINAL APPROVAL <i>WB</i>	DATE
SCALE 2:1			CODE A	ASSY. NO.
QTY./UNIT			MODEL USED ON	
1			GPR-92	
SHEET 1 OF 2			REV. LTR. A	

NOTES

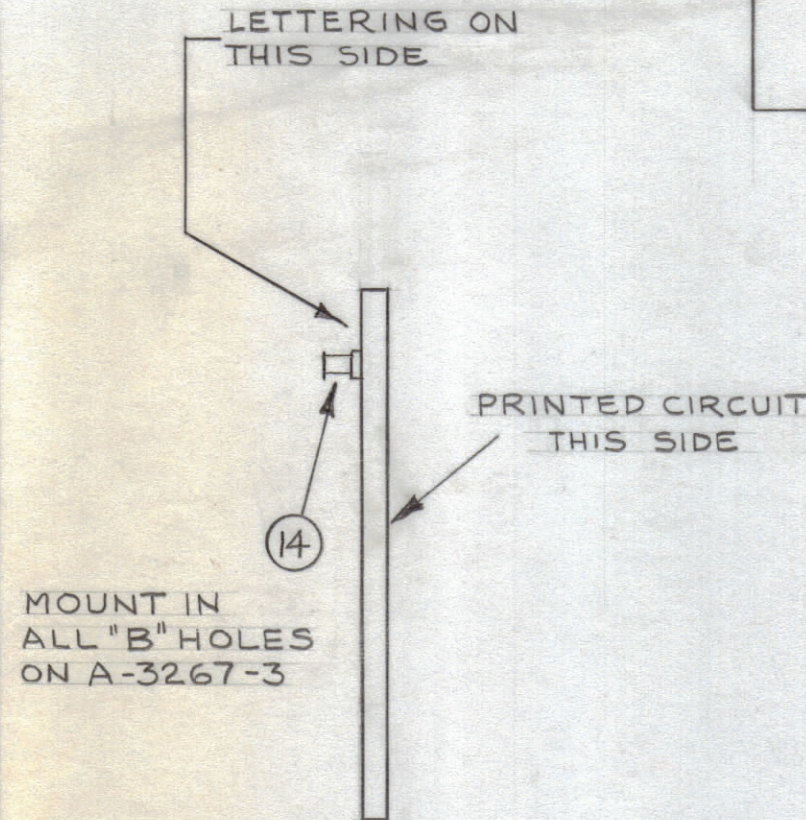
A-3267
A



NOTES:
 1. ALL LETTERING TO BE 3/32 HIGH, BLACK GOTHIC, .020 STROKE.
 2. MARKING PROCESS AS PER TMC SPEC. S-727.
 3. LETTERING TO BE PLACED ±1/64 AS SHOWN.



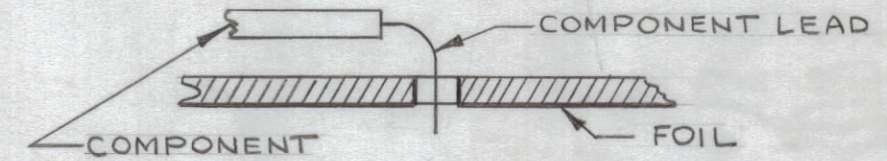
A-3267-3
 MARKING
 (TOP VIEW SHOWN)



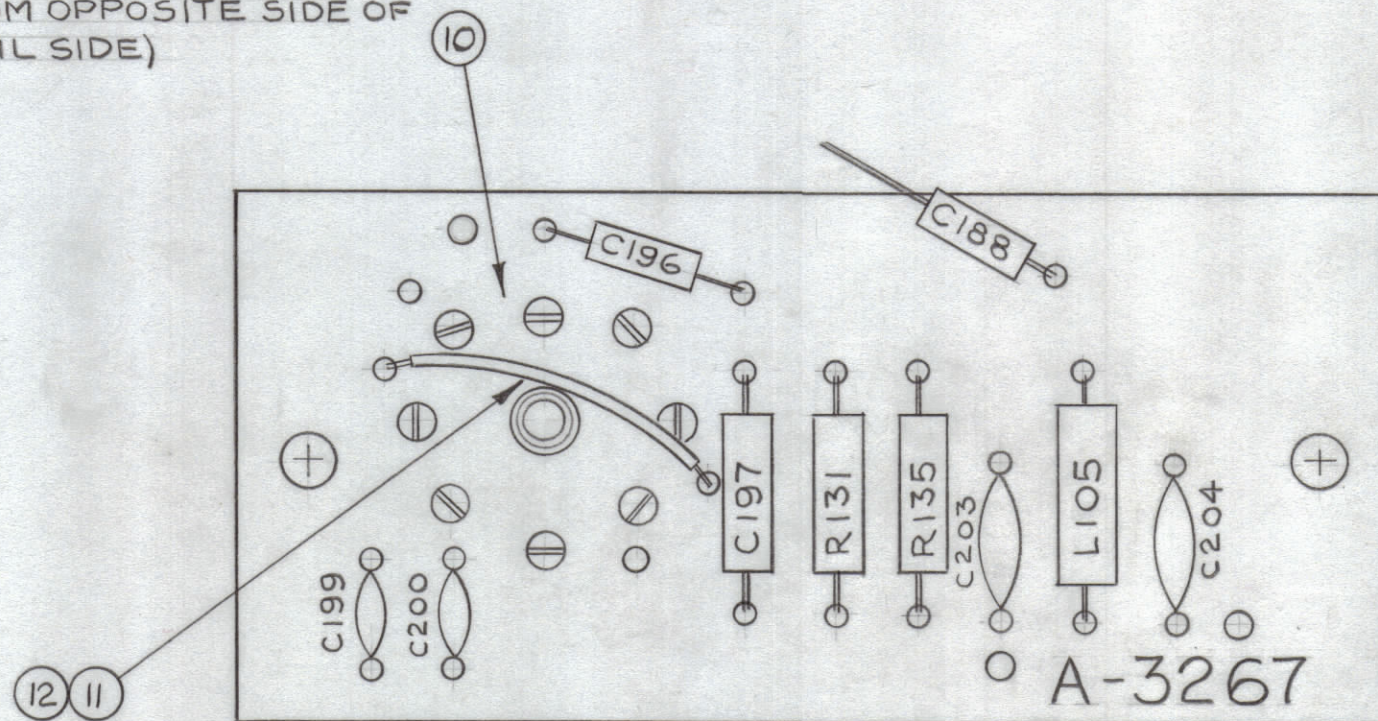
A-3267-4
 SUB-ASSY

REVISIONS						
ZONE	SYM	DESCRIPTION	DATE	E.M.N. NO.	DRAFT	CHKD
B5	A	A-3267-5 WAS A-3266-5	5.8.64	11372	hjb	@
F6, C5		1 HOLE ADDED ON A-3267-3, 2-5 SEE SHEET 1 OF 2				

- ASSEMBLY NOTICE
- 1- TO MOUNT COMPONENTS INSERT LEAD THROUGH PLATED THRU HOLES & BEND ABOUT 1/16 OF LEAD OVER COPPER FOIL AS SHOWN.
 - 2- APPLY HEAT & SOLDER TO LEAD & FOIL - CAUTION - TOO MUCH HEAT WILL CAUSE THE FOIL TO SEPARATE FROM THE BOARD
 - 3- CLEAN & INSPECT AS PER S-676



INSERT FROM OPPOSITE SIDE OF BOARD (FOIL SIDE)



A-3267-5
 ELECTRICAL ASSY

REQ'D.	ITEM	PART NUMBER	DESCRIPTION	SYMBOL
	C188	1 15	CC21UJ470J	CAPACITOR, FIXED, CERAMIC
		6 14	TE-127-2	TERMINAL, STUD
		- 13	BS-100	SOLDER, SOFT
		- 12	PX-104-1-.034	INSULATION, SLEEVING
		- 11	WL-100-6	WIRE, ELECTRICAL #20
		1 10	TS-160-1	SOCKET, TUBE VI07
		1 9	CM15C270J	CAPACITOR, FIXED, MICA C196
		1 8	CC-100-9	CAPACITOR, FIXED, CERAMIC, DISC C204
		1 7	CL-240-8.2	COIL, RF, FIXED L105
		1 6	CC-100-16	CAPACITOR, FIXED, CERAMIC, DISC C203
		1 5	RC20GF681K	RESISTOR, FIXED, COMPOSITION R135
		1 4	RC20GF393K	RESISTOR, FIXED, COMPOSITION R131
		1 3	CC-101-9	CAPACITOR, FIXED, CERAMIC C197
		1 2	CC-100-15	CAPACITOR, FIXED, CERAMIC, DISC C200
		1 1	CC-100-24	CAPACITOR, FIXED, CERAMIC, DISC C199

M. GELLMAN LIST OF MATERIAL			
MATERIAL	THE TECHNICAL MATERIEL CORP. MAMARONECK, NEW YORK		
FINISH	TITLE PRINTED CIRCUIT BOARD ASSY (TOP VIEW SHOWN)		
	DRAWN	DATE	FINAL APPROVAL
	CHECKED	DATE	DATE
	ELECT. DES.	DATE	A-3267
	MECH. DES.	DATE	A
	SHEET 2 OF 2		REV. LTR.

QTY./UNIT	MODEL USED ON	ASS'Y. NO.
SCALE	CODE	
2:1	A	

THE CONTENTS OF THIS DRAWING ARE THE EXCLUSIVE PROPERTY OF THE TECHNICAL MATERIEL CORP. ITS UNAUTHORIZED USE OR REPRODUCTION IN WHOLE OR IN PART IS STRICTLY FORBIDDEN.

NOTES

A-3267

A

A

A