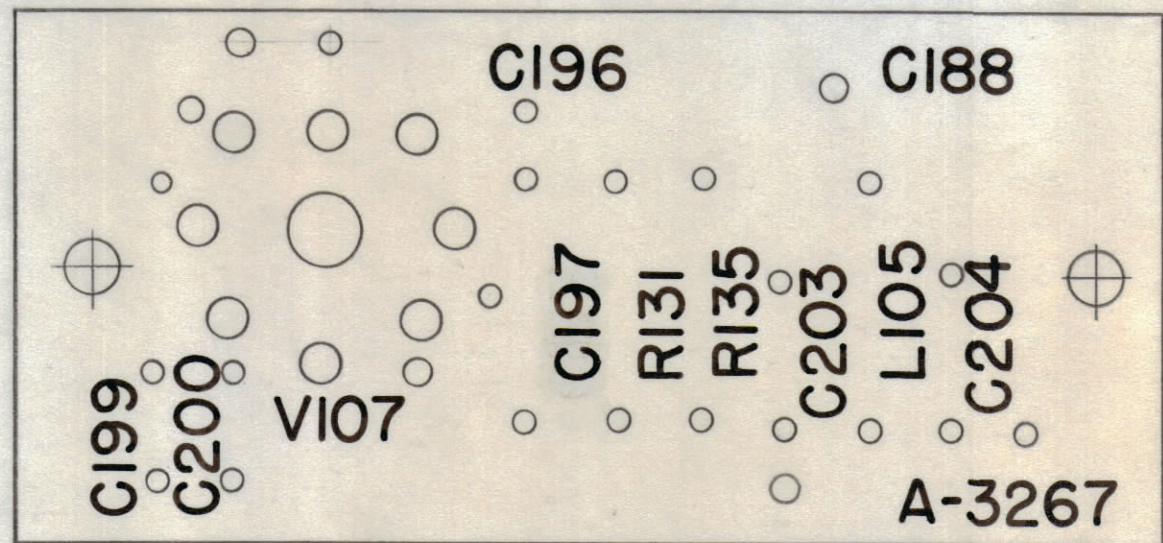
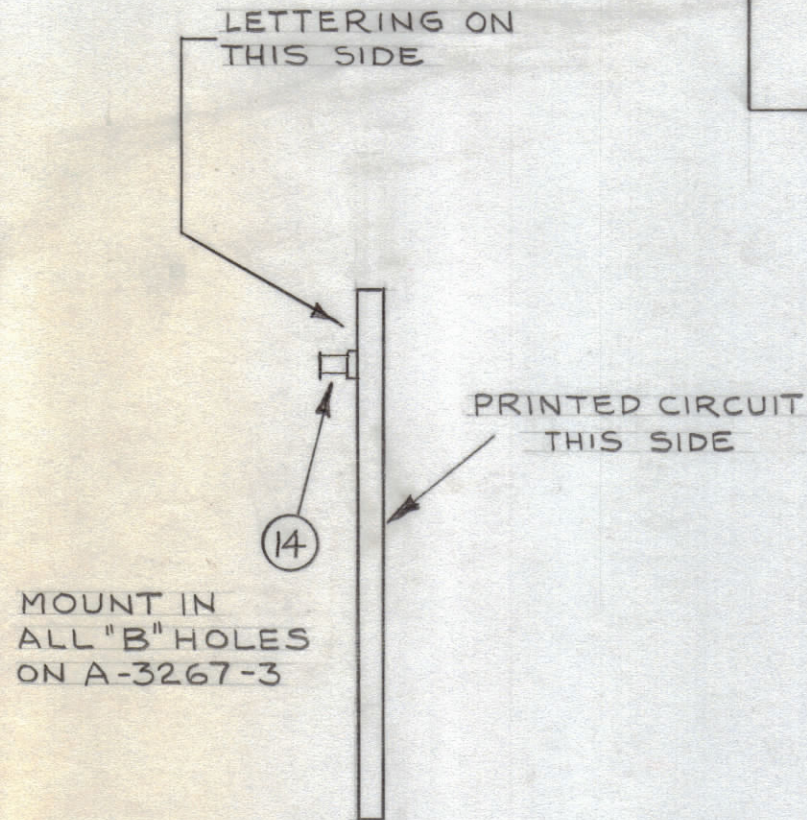


NOTES:

1. ALL LETTERING TO BE 3/32 HIGH, BLACK GOTHIC, .020 STROKE.
2. MARKING PROCESS AS PER TMC SPEC. S-727.
3. LETTERING TO BE PLACED ±1/64 AS SHOWN.



A-3267-3
MARKING
(TOP VIEW SHOWN)

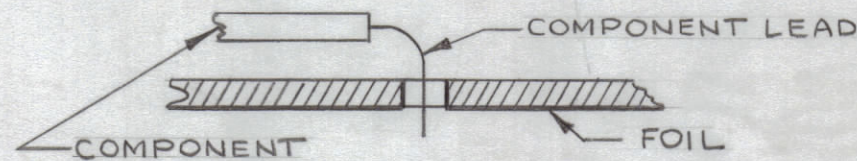


A-3267-4
SUB-ASSY

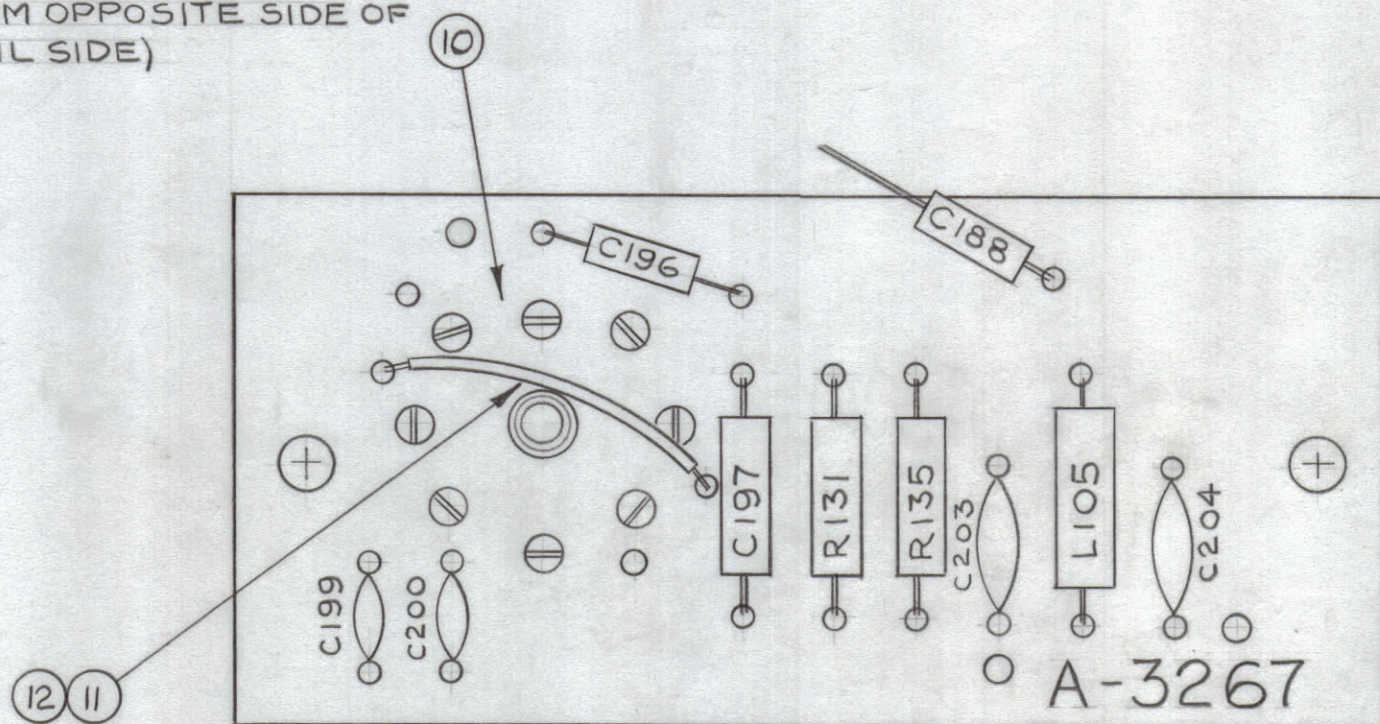
REVISIONS							
ZONE	SYM	DESCRIPTION	DATE	E.M.N. NO.	DRAFT	CHKD	APPD
B5	A	A-3267-5 WAS A-3266-5	5.8.64	11372	WJB	@	KS
F6, C5		1 HOLE ADDED ON A-3267-3, 2-5 SEE SHEET 1 OF 2					

ASSEMBLY NOTICE

- 1- TO MOUNT COMPONENTS INSERT LEAD THROUGH PLATED THRU HOLES & BEND ABOUT 1/16 OF LEAD OVER COPPER FOIL AS SHOWN.
- 2- APPLY HEAT & SOLDER TO LEAD & FOIL - CAUTION - TOO MUCH HEAT WILL CAUSE THE FOIL TO SEPARATE FROM THE BOARD
- 3- CLEAN & INSPECT AS PER S-676



INSERT FROM OPPOSITE SIDE OF BOARD (FOIL SIDE)



A-3267-5
ELECTRICAL ASSY

REQ'D.	ITEM	PART NUMBER	DESCRIPTION	SYMBOL
	C188	1 15	CC21UJ470J	CAPACITOR, FIXED, CERAMIC
		6 14	TE-127-2	TERMINAL, STUD
		- 13	BS-100	SOLDER, SOFT
		- 12	PX-104-1-.034	INSULATION, SLEEVING
		- 11	WL-100-6	WIRE, ELECTRICAL #20
		1 10	TS-160-1	SOCKET, TUBE VI07
		1 9	CM15C270J	CAPACITOR, FIXED, MICA C196
		1 8	CC-100-9	CAPACITOR, FIXED, CERAMIC, DISC C204
		1 7	CL-240-8.2	COIL, RF, FIXED L105
		1 6	CC-100-16	CAPACITOR, FIXED, CERAMIC, DISC C203
		1 5	RC20GF681K	RESISTOR, FIXED, COMPOSITION R135
		1 4	RC20GF393K	RESISTOR, FIXED, COMPOSITION R131
		1 3	CC-101-9	CAPACITOR, FIXED, CERAMIC C197
		1 2	CC-100-15	CAPACITOR, FIXED, CERAMIC, DISC C200
		1 1	CC-100-24	CAPACITOR, FIXED, CERAMIC, DISC C199

M. GELLMAN

LIST OF MATERIAL

MATERIAL		THE TECHNICAL MATERIEL CORP. MAMARONECK, NEW YORK	
FINISH		TITLE PRINTED CIRCUIT BOARD ASSY (TOP VIEW SHOWN)	
UNLESS OTHERWISE SPECIFIED DIMENSIONS ARE IN INCHES AND INCLUDE CHEMICALLY APPLIED OR PLATED FINISHES	DRAWN 5/28/64	DATE 5/28/64	FINAL APPROVAL A
DECIMALS .X ± .05 .XX ± .01 .XXX ± .005	TOLERANCES	FRACTIONS ± 1/64 ANGLES ± 0° 30'	ELECT. DES. DATE MECH. DES. DATE
		A-3267	
		SHEET 2 OF 2	
		REV. LTR. A	

1	GPR-92	
QTY./UNIT	MODEL USED ON	ASS'Y. NO.
SCALE 2:1	CODE A	
THE CONTENTS OF THIS DRAWING ARE THE EXCLUSIVE PROPERTY OF THE TECHNICAL MATERIEL CORP. ITS UNAUTHORIZED USE OR REPRODUCTION IN WHOLE OR IN PART IS STRICTLY FORBIDDEN.		

NOTES

A-3267

A

C

B

A